

- › Akai Professional /
- › Akai Professional MPC Live III Standalone Music Production Center Instruction Manual

Akai Professional MPCLIVE3

Akai Professional MPC Live III Instruction Manual

Standalone Portable Music Production Center

1. INTRODUCTION

The Akai Professional MPC Live III is a powerful, standalone music production center designed for beatmakers, producers, and live performers. It offers a comprehensive suite of tools for creating, recording, mixing, and performing music without the need for a computer. This manual provides essential information to help you get started and maximize your experience with the MPC Live III.



Figure 1: Akai Professional MPC Live III Standalone Music Production Center.

2. SETUP

2.1. Unboxing and Package Contents

Carefully unpack your MPC Live III and ensure all components are present. The package should include:

- MPC Live III Unit
- Power Adapter
- USB Cable
- Software Download Card
- User Manual (this document)
- Warranty Card

2.2. Powering On and Charging

Connect the included power adapter to the MPC Live III and a power outlet. The device features a rechargeable battery for portable use. Allow the unit to fully charge before its first use for optimal battery life.

2.3. Connections

The MPC Live III offers extensive connectivity options:

- **USB-C Port:** For connecting to a computer or other USB-C devices.
- **USB-A Ports (2x):** For connecting USB MIDI controllers, external hard drives, or other USB devices.
- **MIDI I/O (2x 5-pin MIDI In, 2x 5-pin MIDI Out):** For connecting external MIDI gear.
- **XLR/TRS Combo Inputs (2x):** For connecting microphones or line-level audio sources.
- **TRS Outputs (6x):** For connecting to studio monitors, mixers, or other audio equipment.
- **Stereo Headphone Out (1/4"):** For private monitoring.
- **RCA Inputs (2x):** For connecting turntables or other RCA-enabled devices.
- **Stereo CV/Gate Outputs (4x 1/8" / 3.5mm):** For integrating with modular synthesizers.
- **SD Card Slot:** For expanding storage and loading samples.
- **Drive Bay for 2.5" SATA Drive:** For internal SSD/HDD expansion.

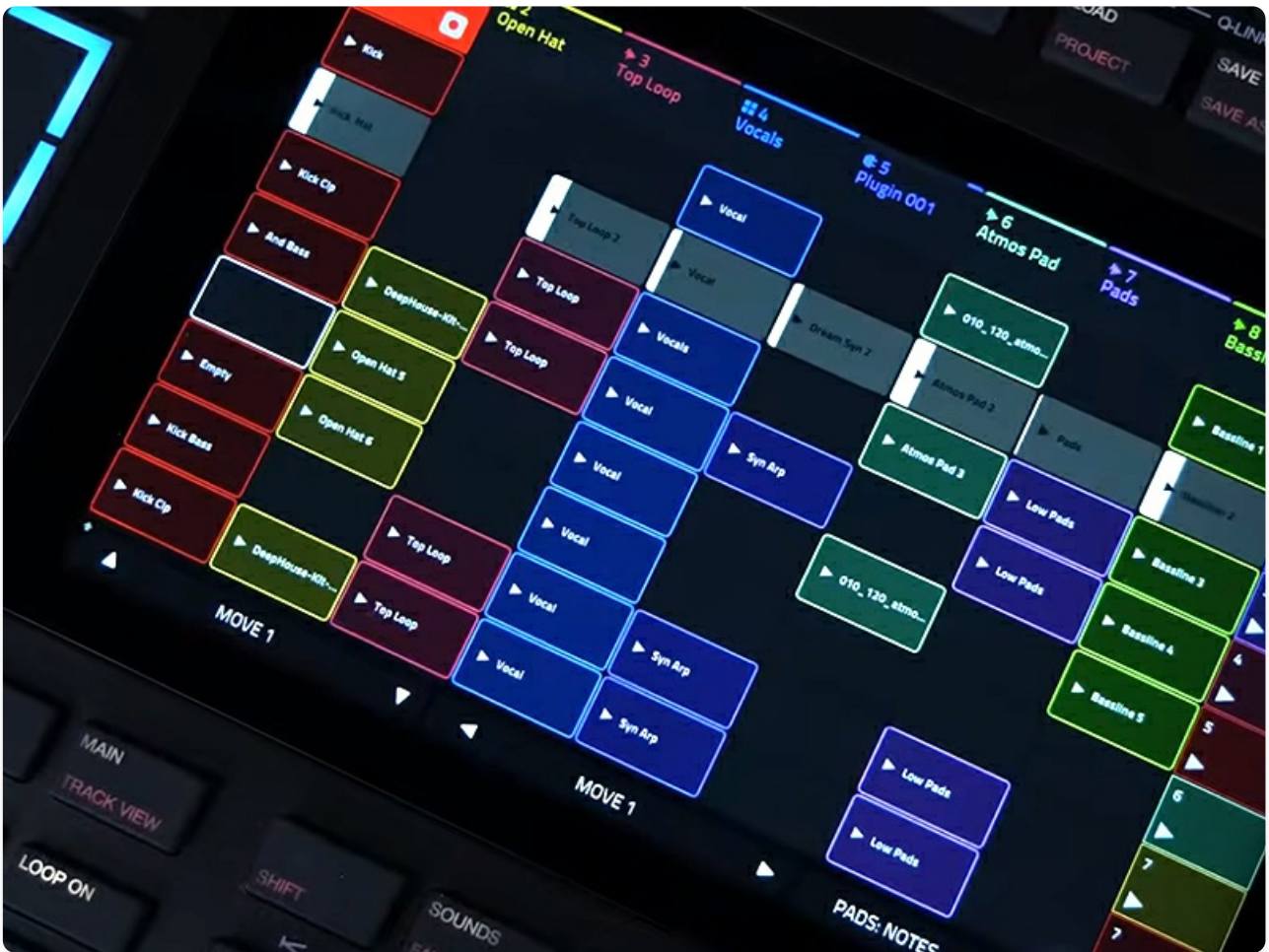


Figure 2: Detailed view of the MPC Live III's rear panel connections.

2.4. Initial Software Setup

Upon first power-on, the MPC Live III will guide you through the initial setup of its MPC3 OS. This includes configuring basic settings and accessing the pre-installed factory sample library and plugin instruments. Use the included Software Download Card to register your product and access additional software and content.

3. OPERATING INSTRUCTIONS

3.1. MPCe Expressive Pads

The MPC Live III features 16 full-size MPCe expressive pads with 3D-sensing technology. These pads respond to velocity, pressure, and X/Y control, allowing for dynamic performance and sound manipulation. Each pad can host up to four independent quadrants, enabling complex layering and blending of samples.



Figure 3: MPCe pads offering advanced expressive control.

3.2. Multi-Touch Display

Navigate the MPC3 OS using the intuitive 7-inch multi-touch display. This display provides visual feedback for all functions, including sequencing, sampling, mixing, and effects. The touch interface allows for direct manipulation of parameters and an efficient workflow.

3.3. 16-Step Sequencer and Performance Touch-Strip

Create and arrange your music using the integrated 16-step sequencer. Function buttons provide quick access to various sequencing parameters. The dynamic performance touch-strip allows for real-time control over effects, note repeats, and other performance elements, enhancing live improvisation.

Video 1: An overview of the Akai Professional MPC Live III, showcasing its features and performance capabilities with artists JBlack and Kenya Grace.

3.4. Sampling and Audio Interface

Record audio directly into the MPC Live III using the built-in microphone or the XLR/TRS combo inputs. The integrated audio interface ensures high-quality recording and playback. Utilize the sampling features to chop, edit, and manipulate audio for your productions.

3.5. Sound Libraries and Plugins

The MPC Live III comes with a brand-new factory sample library containing over 1,000 MPC-ready drum kits and instruments. It also includes a collection of premium plugin instruments and a 2-month Splice access for additional sounds. The MPC3 Pro Pack offers advanced AIR pro plugins like Reverb Pro, Visual EQ4, Fabric Select, and Utility.

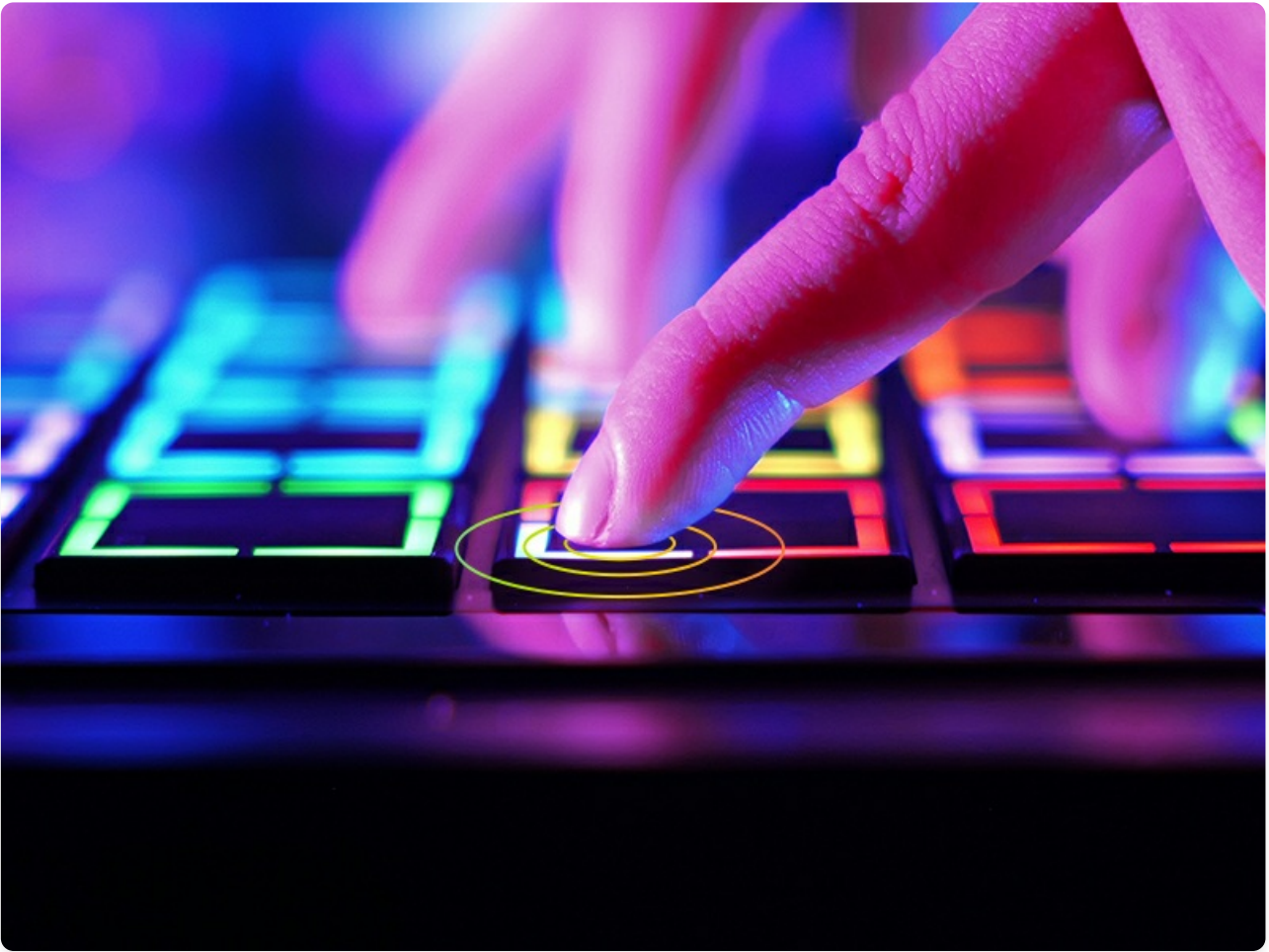


Figure 4: Explore a vast array of sound libraries, samples, and plugins.

3.6. Advanced Workflow Features

The MPC Live III's MPC3 OS provides advanced features for an enhanced workflow:

- **Clip Launching:** A next-gen clip launch matrix for intuitive song arranging and performance.
- **Song Arranging:** Tools for structuring and refining your tracks.
- **Super Timestretch:** Advanced time-stretching capabilities for samples.
- **Pro Stems:** Features for isolating and manipulating individual stems within audio.
- **CV Playground:** Enhanced control over modular synthesis setups.

Video 2: Kenya Grace demonstrates the MPC Live III's performance capabilities and workflow.

4. MAINTENANCE

To ensure the longevity and optimal performance of your MPC Live III, follow these maintenance guidelines:

- **Cleaning:** Use a soft, dry cloth to clean the exterior of the unit. For the touchscreen, use a microfiber cloth specifically designed for electronics. Avoid abrasive cleaners or solvents.
- **Storage:** Store the MPC Live III in a cool, dry place away from direct sunlight, extreme temperatures, and humidity.
- **Handling:** Handle the device with care to prevent drops or impacts. Avoid placing heavy objects on top of the unit.
- **Battery Care:** For extended storage, ensure the battery is charged to approximately 50%. Avoid completely draining the battery for long periods.

5. TROUBLESHOOTING

If you encounter issues with your MPC Live III, refer to the following common troubleshooting steps:

- **No Power:** Ensure the power adapter is securely connected to both the unit and a working power outlet. Check if the battery is charged.
- **No Sound:** Verify that your audio outputs are correctly connected to your speakers or headphones. Check volume levels on the MPC Live III and your audio system. Ensure tracks are not muted.
- **Pads Not Responding:** Check pad sensitivity settings in the system preferences. Ensure the pads are clean and free from debris.
- **Software Glitches:** Try restarting the unit. If issues persist, check the Akai Professional website for firmware updates.
- **Connectivity Issues:** For USB or MIDI connections, ensure cables are securely connected. For Wi-Fi/Bluetooth, check network settings and device pairing.

For more detailed troubleshooting or persistent issues, please contact Akai Professional support.

6. SPECIFICATIONS

Feature	Detail
Brand	Akai Professional
Model Name	MPCLIVE3
Connectivity Technology	USB
Special Features	Backlit Drum Pad, Battery Powered, Compact, Digital Display, Integrated Speaker, Lightweight, Portable, Touch Sensitive Pad
Product Dimensions	10.04"D x 17.16"W x 2.64"H
Item Weight	3.9 Kilograms
Material Type	Metal, Plastic
Hardware Interface	USB Type C
Keyboard Description	Touch Sensitive 3D Pads
Control Type	Touch
Platform	PC/Mac
Color	Black

7. WARRANTY INFORMATION

The Akai Professional MPC Live III comes with a **1-year manufacturer's warranty**. This warranty covers defects in materials and workmanship under normal use. Please retain your proof of purchase for warranty claims. For full details, refer to the Warranty Card included in your package or visit the official Akai Professional website.

8. SUPPORT

For further assistance, technical support, or to access additional resources, please visit the official Akai Professional store or support page:

[Akai Professional Amazon Store](#)

[Akai Professional Official Support](#)

© 2026 Akai Professional. All rights reserved.