

[Manuals.plus](#) /

> [Veken](#) /

> Veken 11.8" Rain Shower Head with Handheld Instruction Manual

Veken SHC5V401

Veken 11.8" Rain Shower Head with Handheld Instruction Manual

Model: SHC5V401

1. IMPORTANT SAFETY INFORMATION

- Ensure all connections are tightened properly to prevent leaks.
- Do not overtighten components, as this may cause damage.
- Use only hand tools for installation; power tools can strip threads or damage parts.
- Always turn off the main water supply before beginning installation or maintenance.
- Keep small parts away from children.

2. PACKAGE CONTENTS

Verify that all components are present before beginning installation:

- Rain Shower Head x 1
- Handheld Shower Head x 1
- Integrated Tri-Arm Extension x 1
- 71" Hose x 1
- Wall Bracket x 1
- Wrench x 1
- Teflon Tape x 1
- Spare Washers x 2



Image: All components included in the Veken shower head package.

3. SETUP & INSTALLATION

Follow these steps for a quick and tool-free installation:

1. **Step 1: Remove Existing Shower Head.** Unscrew your old shower head from the shower arm. Clean any residue from the shower arm threads.
2. **Step 2: Apply Teflon Tape.** Wrap Teflon tape clockwise around the threads of your existing shower arm.
3. **Step 3: Install Integrated Tri-Arm Extension.** Screw the integrated tri-arm extension onto the shower arm. Hand-tighten, then use the provided wrench for a final quarter turn.
4. **Step 4: Attach Rain Shower Head.** Screw the 11.8-inch rain shower head onto the extension arm. Ensure a washer is in place before tightening.
5. **Step 5: Connect Handheld Shower and Hose.** Connect one end of the 71" hose to the handheld shower head and the other end to the diverter on the tri-arm extension. Attach the wall bracket for the handheld shower to a clean, dry surface at a convenient height.

EASY INSTALLATION 5 SIMPLE STEPS

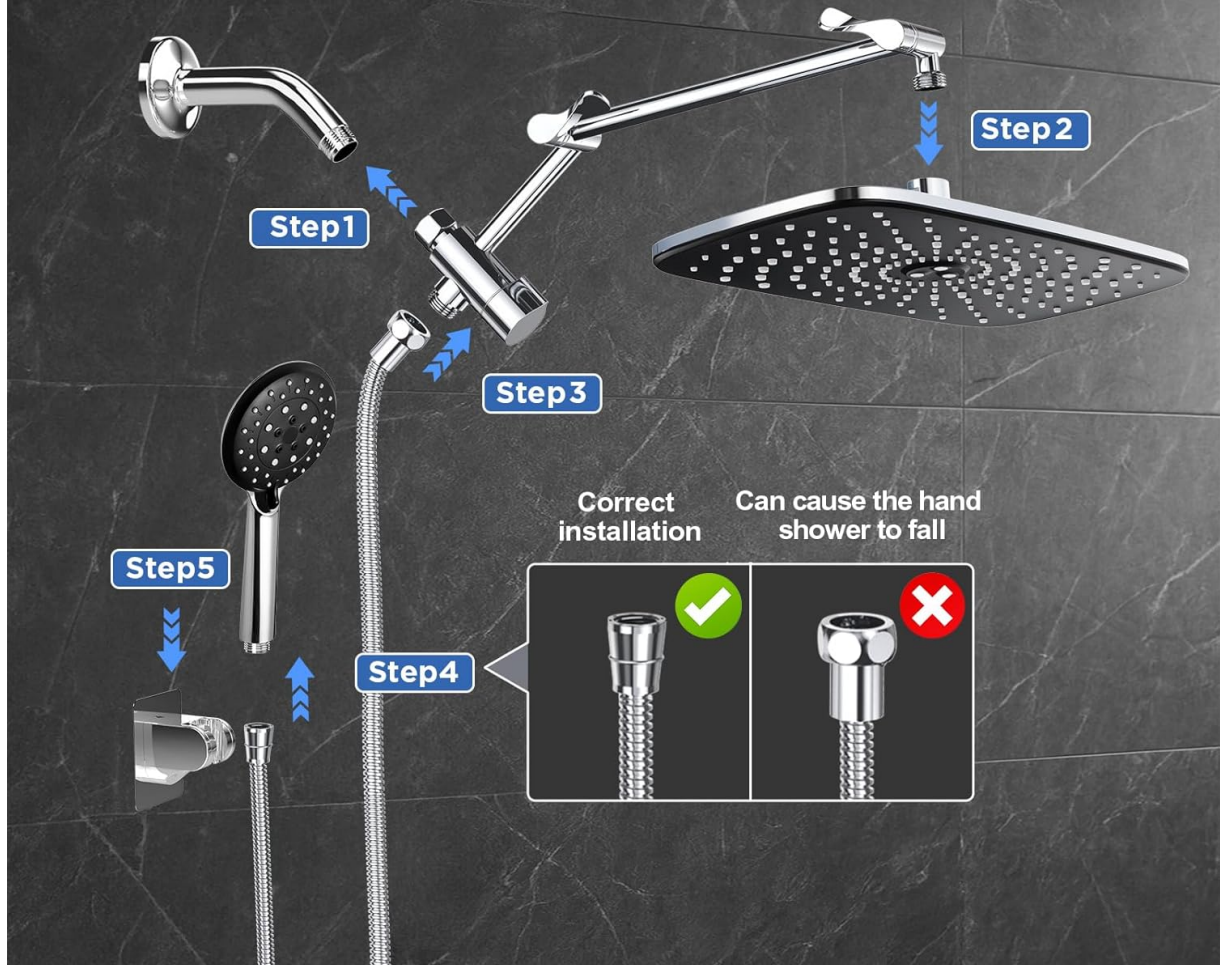


Image: Step-by-step installation guide for the Veken shower system.

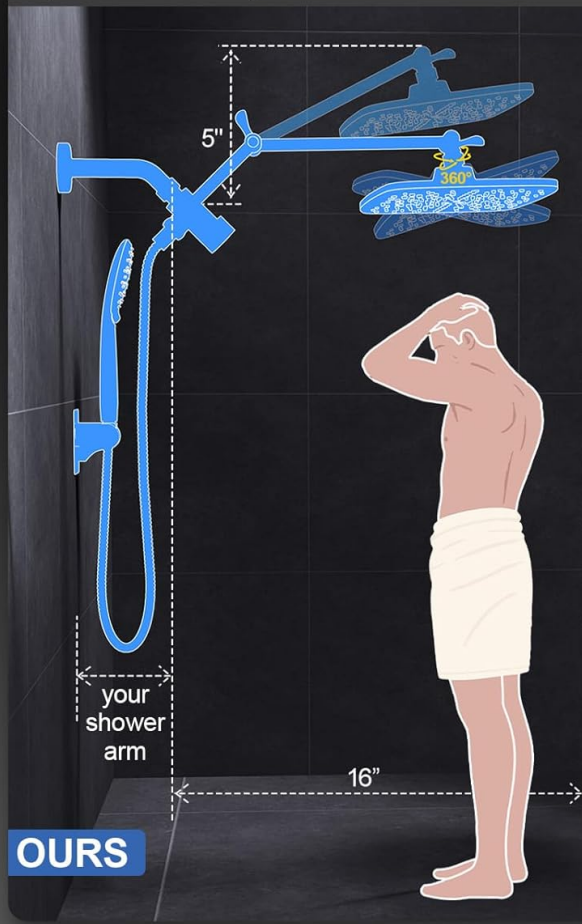
Adjustable Extension Arm

The 15-inch adjustable extension arm allows for customizable height and angle, extending up to 16 inches and raising the rainfall head an additional 5 inches. This ensures comfortable showering for users of all heights and shower space configurations.

15" 2-SECTION SHOWER ARM ALL-IN-ONE DESIGN

With Adjustable Extension Arm

Customizable height & angle for all family members, spacious shower experience.



Without Extension Arm

Fixed position, limited space, forced to shower close to the wall.



Image: Benefits of the adjustable extension arm for enhanced shower space.

4. OPERATING INSTRUCTIONS

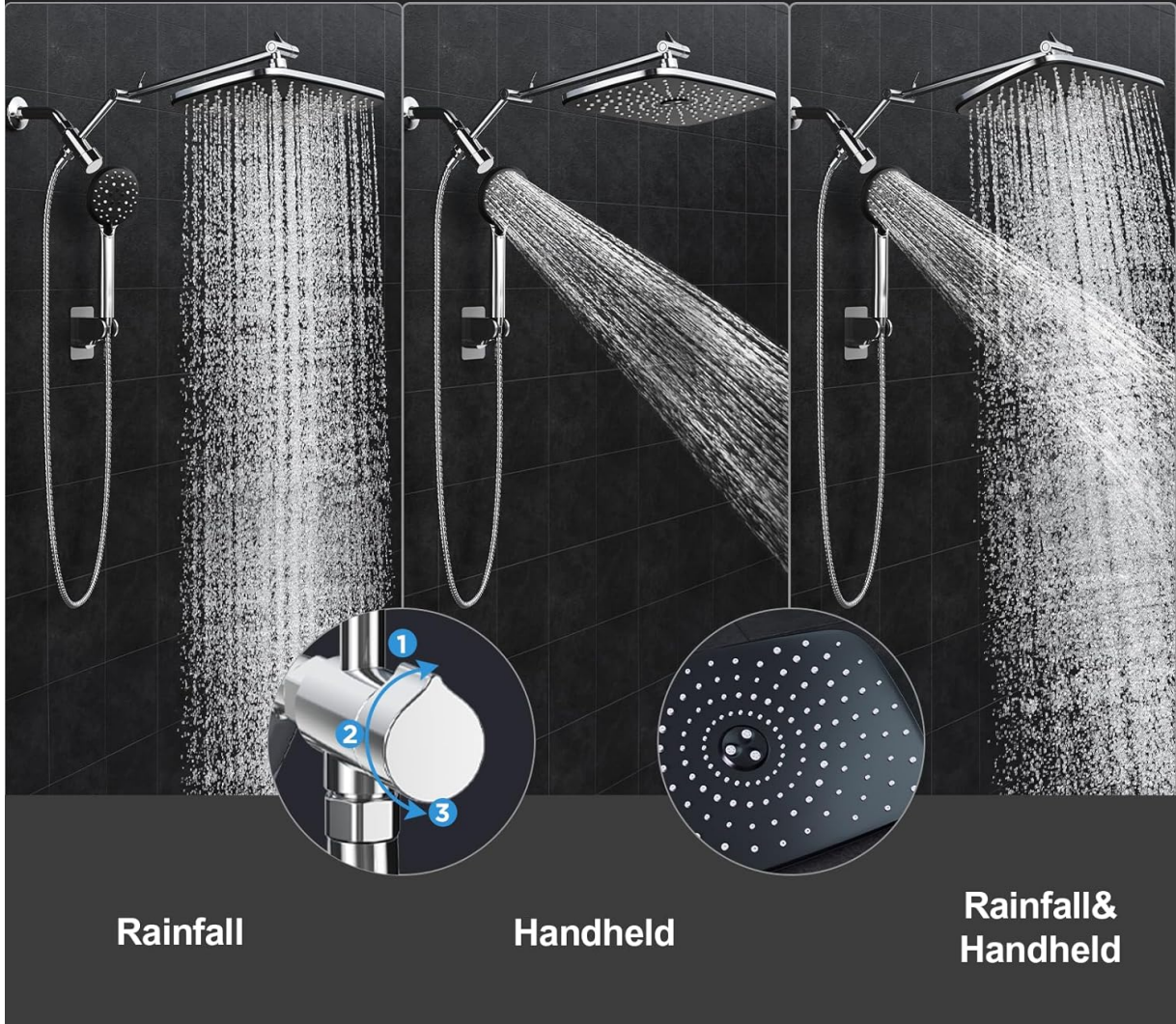
The Veken shower system offers multiple spray modes for a personalized experience:

Selecting Spray Modes

Rotate the 3-way diverter knob located on the tri-arm extension to switch between the following modes:

- **Rainfall Spray:** Water flows exclusively from the 11.8-inch rain shower head, providing full-body coverage.
- **Handheld Spray:** Water flows exclusively from the handheld shower head, ideal for targeted rinsing, cleaning, or bathing pets.
- **Rainfall & Handheld Combo:** Water flows from both the rain shower head and the handheld shower head simultaneously.

3 SPRAY MODES



Rainfall

Handheld

Rainfall &
Handheld

Image: Visual representation of the three available spray modes.

Handheld Shower Modes

The handheld shower head features multiple spray settings, including rain, massage, and mist. Adjust these settings directly on the handheld unit for your desired water flow.



Image: Different spray patterns and applications of the multi-function handheld shower.

5. MAINTENANCE

Regular maintenance ensures optimal performance and longevity of your Veken shower system.

Cleaning the Shower Heads

- To prevent mineral buildup and maintain water flow, regularly wipe the silicone nozzles on both shower heads.
- For stubborn mineral deposits, use a soft cloth dampened with a solution of white vinegar and water. Avoid abrasive cleaners or brushes, which can damage the finish.
- The shower heads feature innovative anti-clog nozzles designed to resist mineral buildup and ensure consistent water pressure.



Image: Anti-clog nozzles for easy maintenance and strong water flow.

General Care

- Wipe down the chrome finish with a soft, damp cloth after each use to prevent water spots.
- Do not use harsh chemicals or abrasive materials on any part of the shower system.

6. TROUBLESHOOTING

If you encounter any issues with your Veken shower system, refer to the following common problems and solutions:

Problem	Possible Cause	Solution
Low Water Pressure	Clogged nozzles or mineral buildup.	Clean the silicone nozzles on both shower heads. Ensure the main water supply valve is fully open.
Leaks at Connections	Loose connections or insufficient Teflon tape.	Ensure all connections are hand-tightened, then use the wrench for a final quarter turn. Reapply Teflon tape if necessary. Check that washers are correctly seated.
Handheld Shower Not Staying in Bracket	Improper installation of wall bracket or bracket angle.	Ensure the wall bracket is securely attached and positioned correctly to hold the handheld shower head. Adjust the angle if possible.

7. SPECIFICATIONS

Feature	Detail
Brand	Veken
Model Number	SHC5V401
Color	Chrome
Style	Modern
Shape	Rectangular (Rain Shower Head)

Feature	Detail
Material	Acrylonitrile Butadiene Styrene, Stainless Steel
Finish Type	Polished
Installation Type	Wall Mounted
Flow Rate	2.5 Gallons Per Minute
Hose Length	71 Inches
Rain Shower Head Dimensions	11.8"L x 7.4"W
Extension Arm Length	15 Inches
Special Features	Adjustable Height, Detachable Handheld

8. WARRANTY & SUPPORT

Manufacturer Warranty

This Veken shower system is covered by a **2-year manufacturer warranty**. Please retain your proof of purchase for warranty claims.

Customer Support

For further assistance, troubleshooting not covered in this manual, or warranty inquiries, please contact Veken customer support through the retailer where the product was purchased or visit the official Veken website for contact information.