

Kokido XV510

KOKIDO XV510 Rechargeable Cordless Pool Vacuum User Manual

Model: XV510

1. SAFETY INFORMATION

Read all instructions carefully before using the KOKIDO XV510 pool vacuum. Failure to follow these instructions may result in electric shock, fire, or serious injury.

- **Electrical Safety:** Use only the charger supplied with the vacuum. Do not operate the vacuum if the charger or vacuum shows signs of damage. Keep charging port dry.
- **Water Safety:** Do not use the vacuum while people are in the pool. Ensure the vacuum is fully submerged before turning it on to prevent motor damage.
- **Battery Care:** Do not attempt to open or replace the battery. Dispose of the battery according to local regulations. Avoid exposing the battery to extreme temperatures.
- **Children and Pets:** Keep the vacuum and its components out of reach of children and pets. This is not a toy.
- **Intended Use:** This vacuum is designed for cleaning swimming pools and spas. Do not use it for any other purpose.

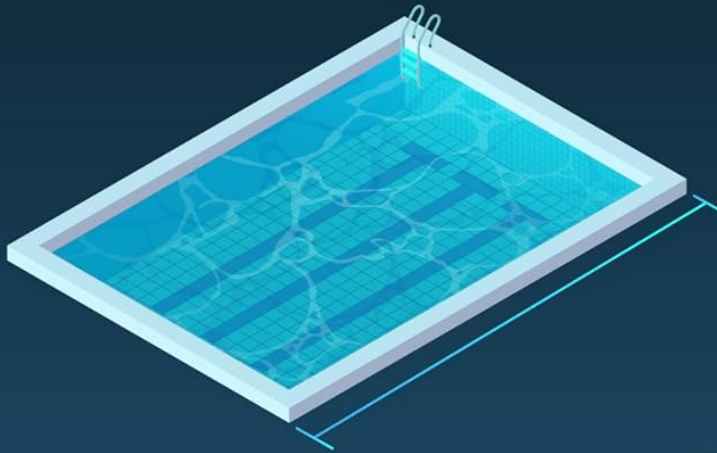
2. PACKAGE CONTENTS

Verify that all items are present in the package:

- Main Vacuum Unit
- Rectangular Pivoting Vacuum Head with Side Brushes
- Square Brush Spot Cleaner
- Stainless Steel Filter Mesh (250 μ)
- Fine Filter Sock (50 μ)
- Pole Connector
- Charger and Charger Adaptor

Pool Specs

Medium to Large
Inground Pools



Pool size

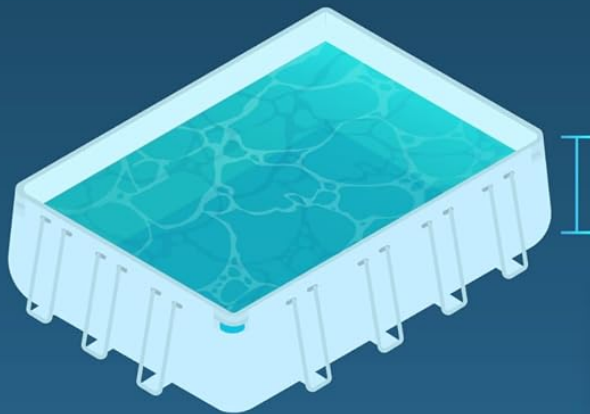
Length

$\leq 40\text{ft}$

Area

$\leq 800\text{ft}^2$

Above Ground Pools



Water Depth

14 inches - 9.8ft

All pool
 shapes

Figure 2.1: Exploded view of the KOKIDO XV510 pool vacuum and its accessories.

3. PRODUCT OVERVIEW

The KOKIDO XV510 is a rechargeable cordless pool vacuum designed for efficient cleaning of various pool types. It

features a powerful motor, dual filtration system, and versatile cleaning heads.

Key Features:

- **Cordless Operation:** Provides freedom of movement without tangled cables.
- **Dual Filtration:** Includes a 250 μ stainless steel filter for larger debris and a 50 μ fine filter sock for smaller particles like sand.
- **Two Vacuum Heads:** A rectangular pivoting head for general cleaning and a square brush for spot cleaning and hard-to-reach areas.
- **High Suction Power:** 15 GPM flow rate, generating 4X suction pressure.
- **Long Battery Life:** Up to 90 minutes of operation on a full charge.

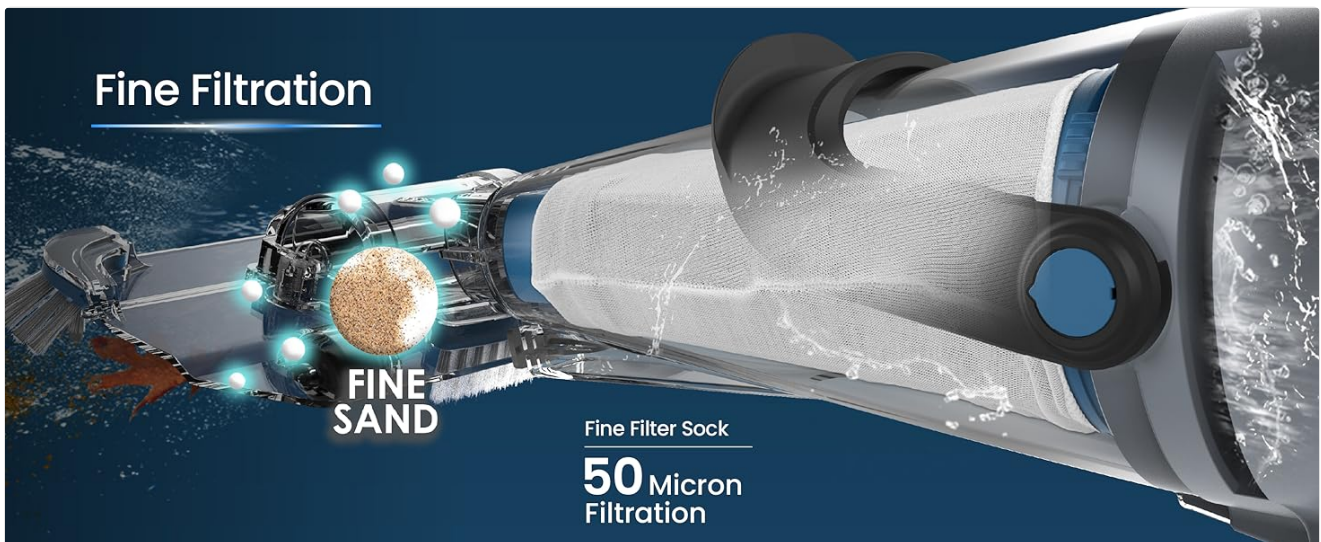


Figure 3.1: Overview of the vacuum's powerful cleaning capabilities and specifications.



Figure 3.2: Debris types effectively handled by the XV510 vacuum.

4. SETUP

4.1 Attaching the Filter

1. Open the transparent cover of the main unit.
2. Insert the stainless steel filter mesh into the main unit.

3. For fine debris, place the 50 μ fine filter sock over the stainless steel filter.
4. Close the transparent cover securely.



Works with Standard Telescopic Pole (Pole Not Included)

Figure 4.1: Illustration of the dual filter system.

4.2 Attaching a Vacuum Head

1. Select the desired vacuum head: the rectangular pivoting head for general cleaning or the square brush for spot cleaning.
2. Align the chosen vacuum head with the front of the main unit.
3. Push firmly until it clicks into place.

4.3 Connecting to a Telescopic Pole (Optional)

The KOKIDO XV510 is compatible with standard telescopic poles (not included).

1. Insert the pole connector into the designated slot on the main vacuum unit.
2. Attach your standard telescopic pole to the pole connector. Ensure it is securely fastened.

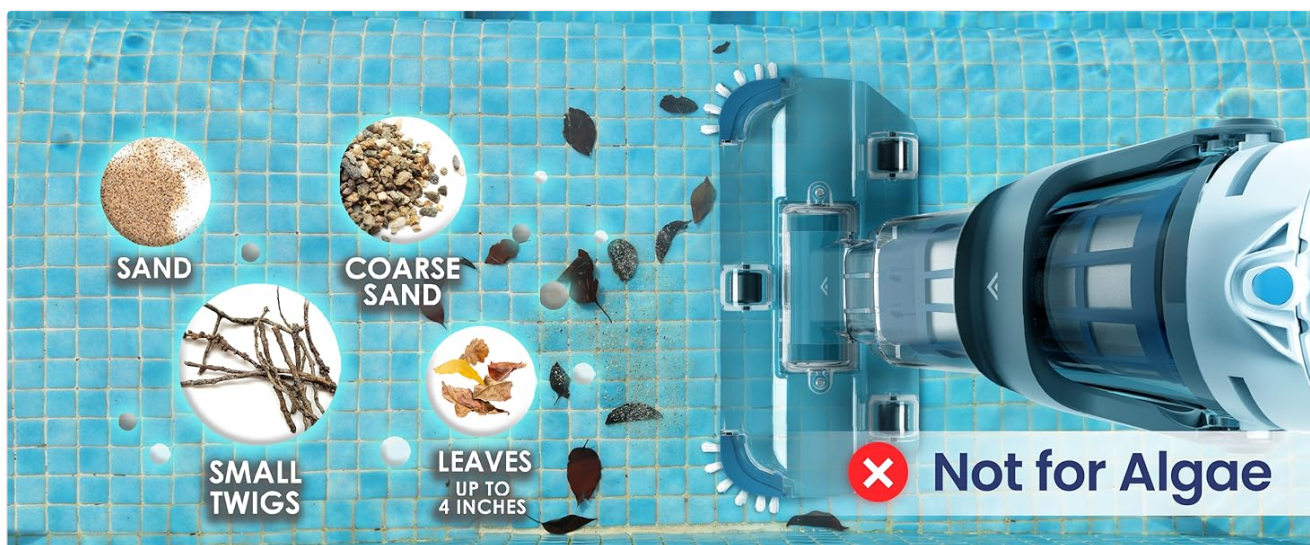


Figure 4.2: Pole connector and vacuum head options.

5. CHARGING THE VACUUM

Before first use, fully charge the vacuum for 5-6 hours. Subsequent charges will also take approximately 5-6 hours.

1. Ensure the vacuum's charging port is dry.
2. Connect the charger adaptor to the charging port on the vacuum.
3. Plug the charger into a standard electrical outlet.
4. The LED indicator on the charger will show red during charging and turn green when fully charged.
5. Once charging is complete, unplug the charger from the outlet and disconnect it from the vacuum.

Note: A full charge provides approximately 90 minutes of cordless cleaning time.

6. OPERATING THE VACUUM

6.1 Preparing for Cleaning

- Ensure the vacuum is fully charged.
- Select and attach the appropriate vacuum head and filter.
- If using a telescopic pole, ensure it is securely attached.

6.2 Cleaning Procedure

1. Submerge the vacuum completely in the pool water before turning it on. This prevents air from entering the motor and ensures proper suction.
2. Press the power button to turn on the vacuum.
3. Slowly guide the vacuum across the pool floor and walls. For general cleaning, use the rectangular pivoting head. For corners, steps, or stubborn spots, use the square brush.
4. For shallow areas or quick spot cleaning, the vacuum can be used in handheld mode without a pole.
5. Observe the transparent body to see debris being collected.
6. When finished, or if suction decreases, turn off the vacuum and remove it from the water.



Figure 6.1: Versatile cleaning options: handheld and with a pole.

Your browser does not support the video tag.

Video 6.1: Demonstration of the KOKIDO XV510's cleaning power in a pool. This video illustrates how the vacuum effectively picks up debris from the pool surface.

7. MAINTENANCE

7.1 Cleaning the Filters

Regular filter cleaning is crucial for maintaining optimal suction performance.

1. After each use, turn off the vacuum and remove it from the pool.
2. Open the transparent cover and remove the filter assembly (stainless steel filter and fine filter sock, if used).
3. Empty any collected debris into a waste bin.
4. Rinse both filters thoroughly with a garden hose to remove fine particles.
5. Allow the filters to air dry completely before reassembling and storing the vacuum.

7.2 General Care and Storage

- Wipe down the exterior of the vacuum with a damp cloth after each use.
- Store the vacuum in a cool, dry place, away from direct sunlight and extreme temperatures.
- For long-term storage, ensure the battery is partially charged (around 50%) and recharge it every 3-6 months to maintain battery health.



Figure 7.1: General pool maintenance steps for a healthy pool environment.

8. TROUBLESHOOTING

Problem	Possible Cause	Solution
Vacuum does not turn on.	Battery is depleted.	Charge the vacuum for 5-6 hours.
	Power button malfunction.	Contact customer support.
Reduced suction power.	Filters are clogged with debris.	Clean the stainless steel filter and fine filter sock.

Problem	Possible Cause	Solution
	Vacuum head is obstructed.	Remove any large debris from the vacuum head opening.
	Fine filter sock is installed when not needed.	Remove the fine filter sock if only large debris is present.
Vacuum floats or is difficult to maneuver.	Air trapped inside the unit.	Ensure the vacuum is fully submerged before turning on. Gently rock the unit to release trapped air.
Debris escapes back into the pool.	Filter not properly seated or damaged.	Check filter for proper installation and damage. Replace if necessary.

9. SPECIFICATIONS

Feature	Specification
Brand	Kokido
Model Name	2026 (XV510)
Material	Stainless Steel
Product Dimensions (L x W x H)	11" x 7.5" x 25"
Power Source	Battery Powered (1 Lithium Ion battery included)
Lithium Battery Energy Content	44.4 Watt Hours
Charging Time	6 Hours
Operating Time	Up to 90 minutes
Water Flow Rate	15 Gallons Per Minute
Debris Capacity	0.32 Gallons
Filter Mesh Size	250 μ (Stainless Steel), 50 μ (Fine Filter Sock)
Load Capacity	5.7 Pounds
Compatible Pool Types	Above-ground and Inground Pools (up to 40ft length, 800 sq ft area, 14 inches - 9.8ft water depth)

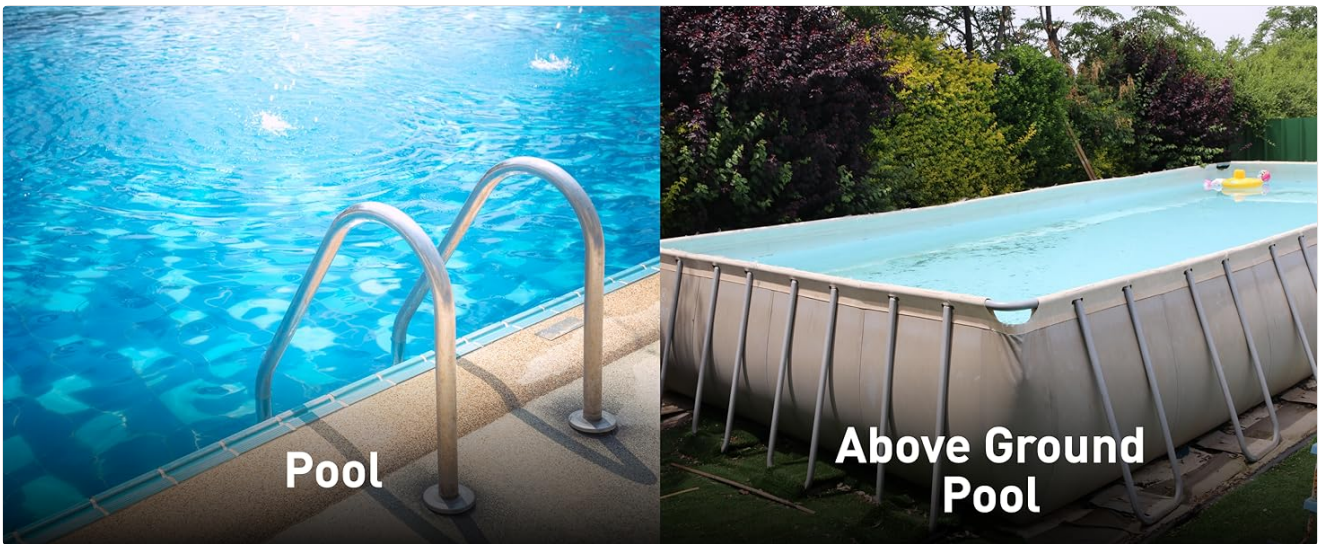


Figure 9.1: Pool compatibility and dimensions.

10. WARRANTY AND SUPPORT

10.1 Warranty Information

The KOKIDO XV510 Rechargeable Cordless Pool Vacuum comes with a **1-year manufacturer's warranty** from the date of purchase. This warranty covers defects in materials and workmanship under normal use. Please retain your proof of purchase for warranty claims.

10.2 Customer Support

For technical assistance, troubleshooting, or warranty inquiries, please contact KOKIDO customer service. You can also find additional resources, user manuals, and videos by scanning the QR code below or visiting the provided link.



Figure 10.1: Scan for additional support resources.

Online Resources: <https://qrs.ly/tlgb98x>

