

Manuals+

[Q & A](#) | [Deep Search](#) | [Upload](#)

manuals.plus /

- › [Karbor](#) /
- › [Karbor MF833 4G LTE WiFi Hotspot Instruction Manual](#)

Karbor MF833

Karbor MF833 4G LTE WiFi Hotspot Instruction Manual

MODEL: MF833

Introduction

The Karbor MF833 4G LTE WiFi Hotspot provides portable internet access, allowing you to stay connected in over 80 countries. This device eliminates the need for a physical SIM card and offers flexible, contract-free data plans. It supports up to 10 simultaneous device connections and features a long-lasting battery for extended use.

Ideal for Multiple Scenarios

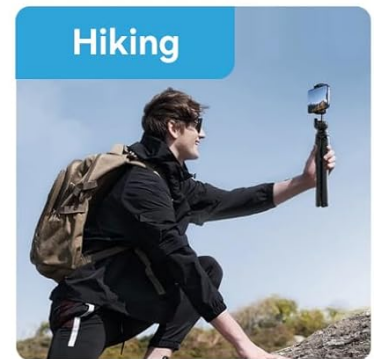


Image: The Karbor MF833 4G LTE WiFi Hotspot, a compact white device with a small screen displaying network information.

This manual provides detailed instructions for setting up, operating, and maintaining your Karbor MF833 hotspot, along with troubleshooting tips and product specifications.

karbor

Pocket WiFi

Karbor 4G WiFi Mobile Hotspot

◆ Designed for Outdoor and Travel



Image: A banner featuring the Karbor Pocket WiFi device, highlighting its role as 'Your Partner On The Go'.

What's in the Box

Your Karbor MF833 package includes the following items:

- Karbor MF833 4G LTE WiFi Hotspot device
- USB charging cable
- Lithium-Ion battery (included)
- Quick Start Guide / Information cards

Video: An unboxing and overview of the Karbor MF833 mobile WiFi hotspot device, showing its components and initial setup steps.

Setup

1. Initial Device Setup

Before first use, ensure the battery is correctly inserted into the device. The device comes with a Lithium-Ion battery (3.8V, 2700mAh).

1. Insert the battery into the designated compartment on the back of the hotspot.
2. Turn the hotspot on by pressing and holding the power button.

2. App Download and Device Pairing

Manage your Karbor hotspot conveniently using the dedicated mobile application.



Image: Visual guide for downloading the Karbor WiFi app, creating an account, and adding the device by scanning a QR code.

1. Download the Karbor WiFi App from the App Store or Google Play.
2. Create an account or log in.
3. Add your device by scanning the QR code located on the back cover of the hotspot.

Easy & Smart with Karbor WiFi APP

Flexibly control and manage your device with APP safer and reliable



Download on the App Store



GET IT ON Google Play



Image: The Karbor WiFi app interface, demonstrating how to monitor data usage, battery level, and network settings.

3. Claiming Free Data

Your device includes 1GB of free global data. To activate:



No SIM Required

Built-in SIM card for contiguous US, Canada, Mexico, Europe and Asia



Unlocked SIM Card Slot

Or insert your own international SIM card or local SIM card



Support Micro SD

Insert your SD card for extra storage



Image: A visual guide showing how to claim 1GB of free data using your Amazon Order ID via the app, or by scanning a QR code to access data plans.

- **Way 1 (via App):** Enter your Amazon Order ID in the app to claim your 1GB free data.
- **Way 2 (via QR Code):** Scan the QR code on the back cover of the device with your phone's native camera to access the data top-up portal.

For more information or to purchase additional data plans, visit topup.karbor.shop.

4. Connecting to WiFi

Connect your devices to the Karbor hotspot using one of the following methods:

Get Data Plans for Canada & Mexico

No SIM Required, No Contract, Pay As You Go





	 10GB	\$49	30-day
	 30GB	\$139	
	 50GB	\$229	60-day

Image: A step-by-step visual guide demonstrating three methods to connect to the Karbor WiFi hotspot, including using the app, scanning a QR code, and manual connection via device settings.

- **Way 1 (via App):** In the Karbor app, tap "+", go to WiFi Settings, select Karbor WiFi, and enter the password.
- **Way 2 (via QR Code):** Remove the back cover of the hotspot, scan the QR code with your phone's native camera. This QR code contains the WiFi network name and password.
- **Way 3 (Manual):** Go to your device's WiFi settings, enable WLAN, select the Karbor WiFi network (e.g., Karbor_BDF7), and enter the password (e.g., 39989837).

5. Setting up the APN (Advanced)

If your device requires manual APN settings, follow these steps:

HOW TO CONNECT TO WiFi



WAY 1 Tap "+", Go to WiFi Setting, Select Karbor WiFi, Enter Password



WAY 2 Remove the Back Cover, Scan the QR with Phone's Native Camera



WAY 3 Go to WiFi Settings, Enable WLAN Select Karbor WiFi, Enter Password

Image: A visual guide for the first three steps of APN setup, including logging into the device's web interface and navigating to network settings.

1. Access the device's web interface (usually via a browser, IP address provided in the manual or app). Enter the username and password.
2. Toggle the switch to "OFF" to disconnect WiFi.
3. Select "Network Settings" then "Wi-Fi Settings".

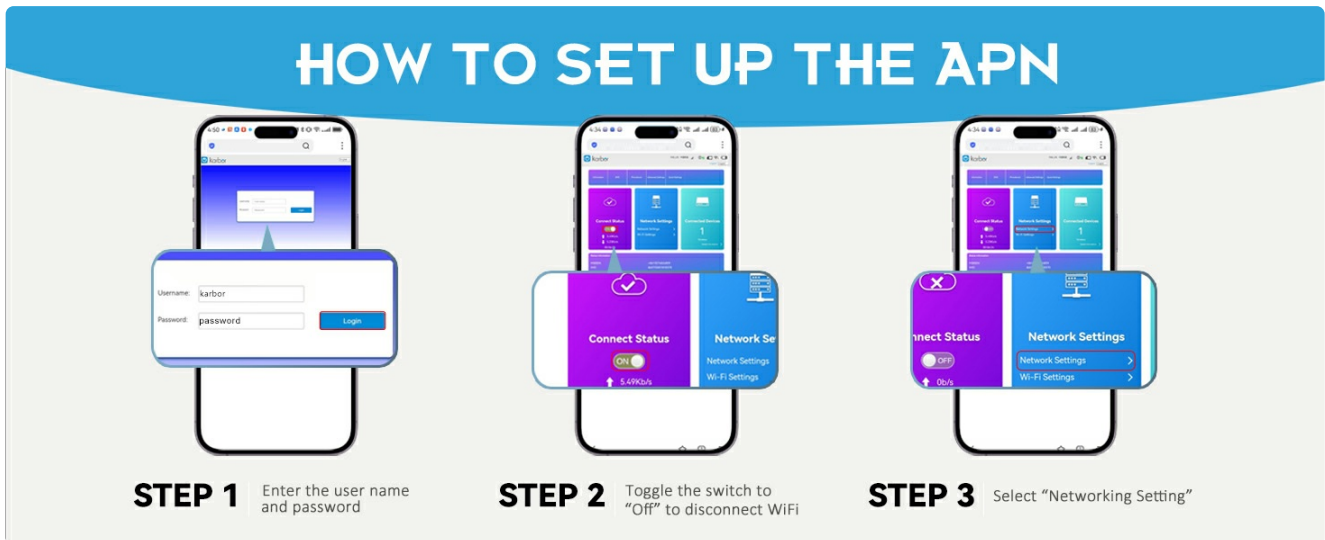


Image: A visual guide for the final steps of APN setup, showing how to select "APN", choose "Manual", add a new profile name and APN, then apply the settings.

4. Select "APN", then "Manual", and click "Add New".
5. Fill in the "Profile Name" and "APN" fields as required by your data provider, then click "Apply". The Profile Name can be customized.

Operating Instructions

The Karbor MF833 is designed for ease of use, providing reliable internet connectivity wherever you go.

- **Power On/Off:** Press and hold the power button to turn the device on or off.
- **Connecting Devices:** The hotspot supports connecting up to 10 devices simultaneously, including laptops, tablets, and smartphones.
- **Battery Life:** The high-capacity battery provides up to 12 hours of continuous WiFi hotspot usage on a single charge.
- **Network Coverage:** Enjoy connectivity in over 80 countries, including the contiguous 48 US states, Canada, Mexico, Europe, and Asia. (Note: Service is not available in Alaska, Hawaii, Puerto Rico, other US territories, or certain remote international regions).

WiFi Goes Where You Go

✔ No SIM Needed

✔ No Contract

✔ Pay As You Go



Image: A woman enjoying WiFi connectivity in a tent, illustrating the device's portability and