

## eLinkSmart H8

# eLinkSmart H8 Fingerprint Door Knob Lock User Manual

Model: H8

## 1. PRODUCT OVERVIEW


The eLinkSmart H8 Fingerprint Door Knob Lock offers a secure and convenient keyless entry solution for various interior and exterior doors. This smart lock integrates multiple unlocking methods, robust construction, and user-friendly installation.

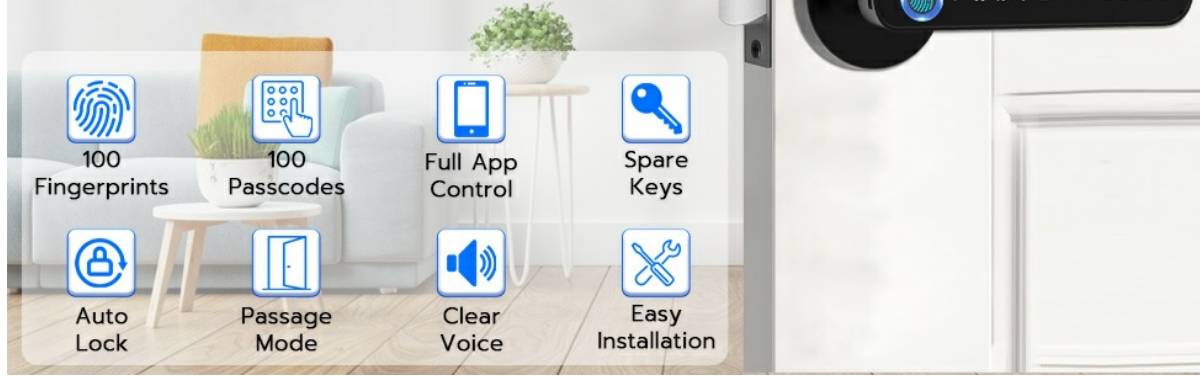
### Key Features:

- **5 Unlocking Methods:** Fingerprint, Passcode, Mobile App, Apple Watch, and Mechanical Key.
- **High Security:** Constructed from durable Alloy Steel and Zinc.
- **Easy DIY Installation:** Designed for simple installation with a screwdriver, no extra drilling required.
- **Long Battery Life:** Low power consumption for extended use, with low battery reminders and emergency power options.
- **Reversible Handle:** Suitable for both left and right-handed doors.



# ADVANCED SMART HANDLE DOOR KNOB LOCK

 Fully Upgraded by eLinkSmart



The eLinkSmart H8 lock provides five convenient ways to unlock your door.

## 2. PACKAGE CONTENTS

Ensure all components are present before beginning installation:

- 1 x H8 Smart Handle Lock (all necessary parts)
- 1 x Screwdriver
- 1 x User Manual
- 2 x Spare Keys

# SELF-LEARNING AI FINGERPRINT READER

 More sensitive and accurate\*



## 125% Enlarger

Higher recognition rate  
and more accurate



## More Sensitive

Quick identify  
within 0.2s



## More Intelligent

360° recognition,  
99.9% recognition rate



\*AI fingerprint sensor improves precise and speed using machine learning.

Included components for the eLinkSmart H8 Smart Handle Lock.


### 3. INSTALLATION GUIDE

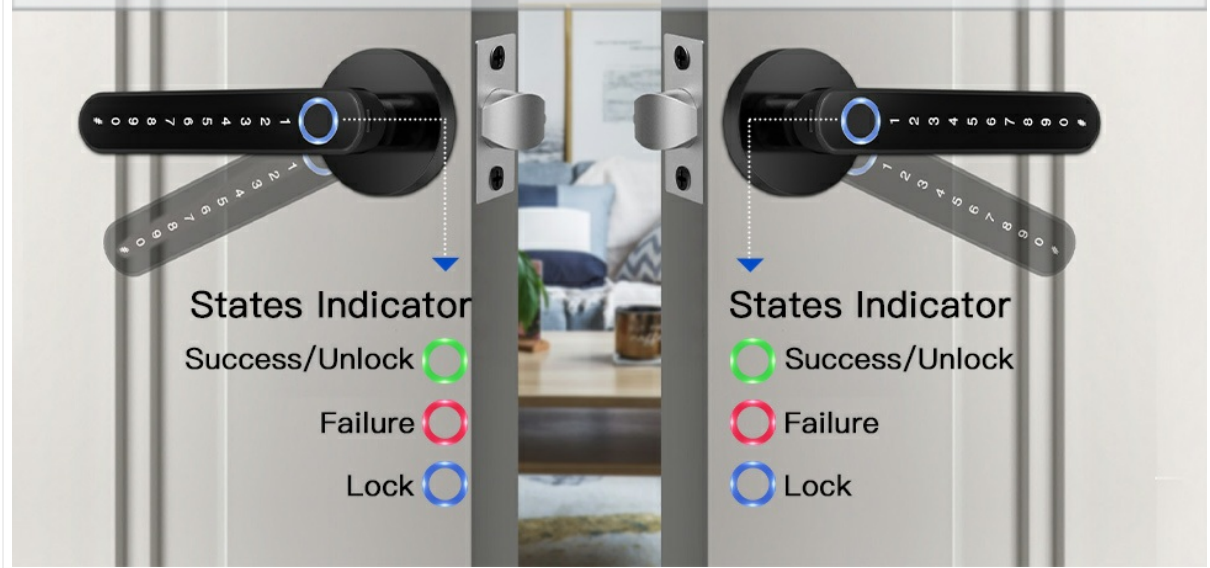
The eLinkSmart H8 lock is designed for easy DIY installation, typically requiring only a screwdriver. No additional drilling is needed for standard door preparations.

#### Door Compatibility:

- **Backset:** 2-3/8" or 2-3/4" (60mm or 70mm)
- **Door Thickness:** 1-3/16" to 2-1/8" (30mm to 55mm)
- **Hole Diameter:** 1-17/20" to 2-3/8" (47mm to 60mm)

## UNIVERSAL FOR RIGHT AND LEFT-HANDED DOORS

 No need to adjust the screw to change the door handle direction



Ensure your door dimensions are compatible with the eLinkSmart H8 lock.

### Installation Steps:

1. Remove your existing door knob and latch.
2. Install the new latch into the door edge, ensuring it is correctly oriented.
3. Insert the exterior handle, routing the battery cable and square spindle through the latch hole.
4. Attach the interior handle, connecting the battery cable and securing it with screws.
5. Install 4 AAA alkaline batteries into the interior handle.
6. Test the lock's functionality to ensure proper operation.



Visual representation of the installation process.

#### Installation Video:

Your browser does not support the video tag.

This video provides a detailed guide on how to install the eLinkSmart H8 Fingerprint Door Knob Lock.

## 4. OPERATING INSTRUCTIONS

The eLinkSmart H8 offers multiple convenient ways to unlock your door.

#### Unlocking Methods:

- **Fingerprint:** Place your registered finger on the fingerprint sensor for quick access. The lock features a self-learning AI fingerprint reader for improved accuracy and speed (0.2s recognition).
- **Passcode:** Enter your programmed passcode on the numeric keypad. The lock supports up to 100 passcodes and includes an anti-peeping function for enhanced security.
- **Mobile App:** Use the dedicated mobile application to unlock the door remotely via Bluetooth.
- **Apple Watch:** For added convenience, unlock the door using your Apple Watch through the

compatible app.

- **Mechanical Key:** In case of emergency or battery depletion, use the provided spare mechanical keys.



The fingerprint sensor provides quick and secure access.



The keypad allows for secure passcode entry.

### Product Overview Video:

Your browser does not support the video tag.

This video provides an overview of the eLinkSmart H8-Black lock's features and operation.

## 5. BATTERY MANAGEMENT

The eLinkSmart H8 lock is designed for low power consumption, providing up to 12 months of standby time on 4 AAA alkaline batteries (not included). The lock will provide a warning when the battery level is low.

### Emergency Power:

If the batteries completely deplete, you can use a power bank connected via the emergency power port

(USB-C) to temporarily power the lock and gain access. Alternatively, the mechanical spare keys can be used.



The lock features long battery life and emergency power options.

## 6. MAINTENANCE

---

To ensure optimal performance and longevity of your eLinkSmart H8 lock, follow these maintenance guidelines:

- Regularly clean the fingerprint sensor and keypad with a soft, dry cloth to remove dust and smudges.
- Avoid using abrasive cleaners or solvents, as these can damage the finish and electronic components.
- Check battery levels periodically and replace all 4 AAA batteries when the low battery warning is indicated.
- Ensure the door and frame are properly aligned to prevent undue stress on the lock mechanism.

## 7. TROUBLESHOOTING

---

If you encounter issues with your eLinkSmart H8 lock, refer to the following common troubleshooting steps:

- **Fingerprint Not Recognized:** Ensure your finger is clean and dry. Try re-registering your fingerprint if the issue persists.
- **Passcode Not Working:** Double-check that you are entering the correct passcode. Ensure the keypad is clean and responsive.
- **Lock Not Responding:** Check the battery level. If batteries are low or depleted, replace them or use the emergency power option.
- **Door Not Locking/Unlocking Smoothly:** Inspect the door and frame for any obstructions or misalignment. Ensure the latch is installed correctly.
- **App Connectivity Issues:** Ensure Bluetooth is enabled on your mobile device and you are within range of the lock. Restart the app or re-pair the lock if necessary.

For further assistance, please contact customer support.

## 8. SPECIFICATIONS

---

<b>Brand</b>	eLinkSmart
--------------	------------

<b>Model Number</b>	H8
<b>Lock Type</b>	Fingerprint, Code, Smart, Keypad Handle
<b>Unlocking Ways</b>	Fingerprint, Passcode, Mobile App, Apple Watch, Mechanical Key
<b>Material</b>	Alloy Steel, Zinc
<b>Item Dimensions (L x W x H)</b>	6.3 x 2.6 x 2.6 inches
<b>Item Weight</b>	1.8 Pounds
<b>Power Source</b>	4 x AAA Batteries (not included)
<b>Connectivity Protocol</b>	Bluetooth
<b>Control Method</b>	App
<b>Recommended Uses</b>	Bedroom, Interior, Front Door, Room, Home, Hotel, Garage, Apartment, Cloakroom, Pantry, Closet, Office, School, etc.

## 9. WARRANTY AND SUPPORT

eLinkSmart provides a 12-month warranty for the H8 Fingerprint Door Knob Lock, ensuring peace of mind for your purchase. We also offer free lifetime technical support to assist you with any queries or issues you may encounter.

### Contact Information:

- For technical support or warranty claims, please contact us via email:[hongjdzwj@outlook.com](mailto:hongjdzwj@outlook.com)

We are committed to providing hassle-free replacements or refunds within the 12-month warranty period.