



[Manuals.plus](#) /

› [eLinkSmart](#) /

› eLinkSmart H8 Fingerprint Smart Door Lock User Manual

## eLinkSmart H8

# eLinkSmart H8 Fingerprint Smart Door Lock User Manual

Model: H8

[Overview](#)   [Package Contents](#)   [Installation](#)   [Setup &](#)  
[Operation](#)   [Maintenance](#)   [Troubleshooting](#)   [Specifications](#)   [Warranty & Support](#)

## 1. PRODUCT OVERVIEW

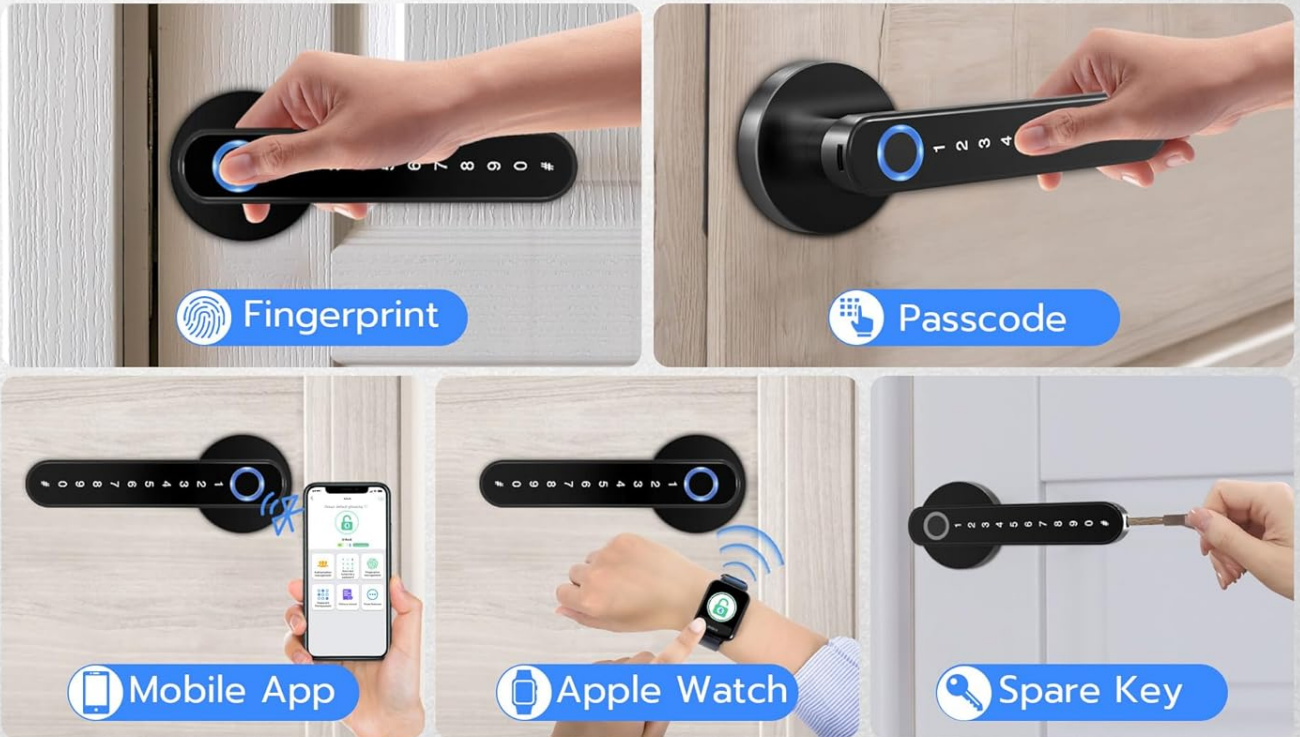
The eLinkSmart H8 Fingerprint Smart Door Lock offers advanced keyless entry solutions for various interior doors. This smart lock integrates multiple unlocking methods, including fingerprint recognition, keypad passcodes, mobile app control, Apple Watch access, and traditional mechanical keys, providing flexibility and enhanced security.

Designed for ease of use and durability, the H8 lock is constructed from alloy steel and zinc, ensuring long-term reliability. Its low power consumption design provides extended battery life, with a warning system for low battery levels and an emergency power option.

The lock is suitable for bedrooms, apartments, hotels, and other private spaces, offering a modern and convenient way to manage access without the need for physical keys.

# 5 WAYS TO UNLOCK

 Convenient, Quick and High-Security



No longer worry about:



Figure 1: Overview of eLinkSmart H8 Smart Door Lock unlocking methods.

Your browser does not support the video tag.

Video 1: An overview of the eLinkSmart H8 Smart Door Lock, highlighting its features and design.

## 2. PACKAGE CONTENTS

Verify that all components are present in the package before proceeding with installation.

- 1 x H8 Smart Handle Lock (All Parts)
- 1 x Screwdriver
- 1 x User Manual

- 2 x Spare Keys



Figure 2: Included components of the eLinkSmart H8 Smart Door Lock.

### 3. INSTALLATION GUIDE

The eLinkSmart H8 lock is designed for easy DIY installation, typically requiring only a screwdriver. No additional drilling is needed for most standard interior doors. The handle is reversible for both left and right-handed doors.

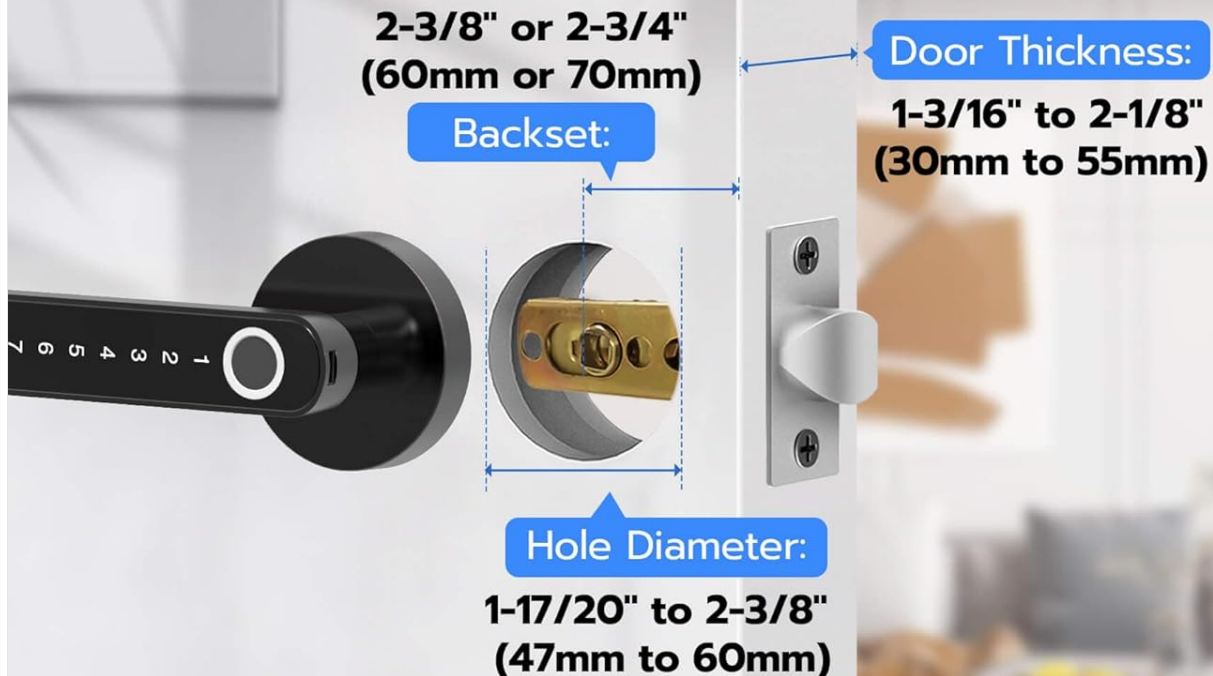
#### 3.1 Door Compatibility

- **Backset:** 2-3/8" (60mm) or 2-3/4" (70mm)
- **Door Thickness:** 1-3/16" to 2-1/8" (30mm to 55mm)
- **Hole Diameter:** 1-17/20" to 2-3/8" (47mm to 60mm)

# EASY DIY INSTALLATION



Compatible with wider thickness and hole diameter of doors



## Compatibility



## Reversible



Figure 3: Door compatibility and handle reversibility for installation.

## 3.2 Installation Steps

- 1. Install the Latch:** Insert the latch mechanism into the door edge. Ensure the spindle hole is squarely straight to the ground. Secure it with the provided wooden screws.
- 2. Install the Front Handle:** Route the battery cable through the square spindle. Insert the battery cable and square spindle into the lock latch hole from the exterior side of the door.
- 3. Install the Back Handle:** Unscrew the battery cover screw on the back handle to open the battery cover. Route the battery cable through the back handle. Connect the battery cable. Install 4 AAA alkaline batteries (not included). Install the battery cover to the back handle and fix it with the battery cover screw.
- 4. Secure the Handles:** Align the front and back handles and secure them using the provided screws. Ensure the handles are firmly attached and operate smoothly.

For a visual guide, please refer to the installation video below.

Your browser does not support the video tag.

Video 2: Detailed installation guide for the eLinkSmart H8 Smart Door Lock. This video demonstrates each step of the installation process, from preparing the door to securing the handles and connecting the internal components.

## 4. SETUP AND OPERATING INSTRUCTIONS

The eLinkSmart H8 offers multiple ways to unlock. Initial setup typically involves registering fingerprints and setting up passcodes via the mobile app.

### 4.1 Mobile App Setup

1. Download the eLinkSmart app from your smartphone's app store (Android or iOS).
2. Open the app and follow the on-screen instructions to create an account and pair your H8 lock via Bluetooth.
3. Once paired, you can register fingerprints, create permanent or temporary passcodes, and manage user access.
4. The app also allows you to view unlock records and adjust various lock settings.



Figure 4: Setting up passcodes and managing the lock via the mobile app.

## 4.2 Unlocking Methods

- **Fingerprint:** Place your registered finger on the fingerprint sensor. The lock will unlock in less than a second if the fingerprint is recognized.
- **Passcode:** Enter your registered passcode on the keypad. The lock supports up to 100 passcodes, including temporary ones.
- **Mobile App:** Use the eLinkSmart app on your smartphone to remotely unlock the door via Bluetooth.
- **Apple Watch:** For compatible Apple Watch users, the lock can be unlocked directly from your watch.
- **Mechanical Key:** In case of battery depletion or electronic malfunction, use the provided mechanical keys as a backup.

# SELF-LEARNING AI FINGERPRINT READER

 More sensitive and accurate\*



## 125% Enlarger

Higher recognition rate  
and more accurate



## More Sensitive

Quick identify  
within 0.2S



## More Intelligent

360° recognition,  
99.9% recognition rate



\*AI fingerprint sensor improves precise and speed using machine learning.

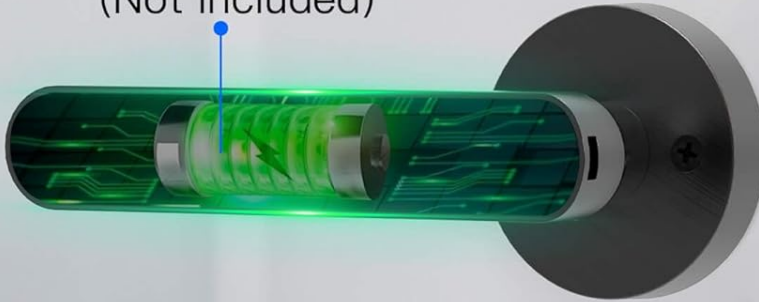
Figure 5: Unlocking the door using the fingerprint sensor.

# LOW POWER CONSUMPTION



12 Months of Long Standby Time

4 AAA Batteries  
(Not Included)



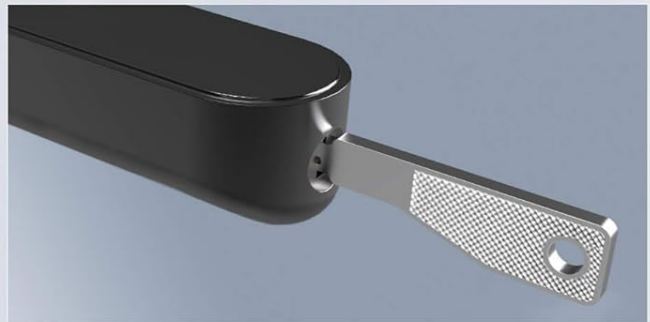
# EMERGENCY UNLOCK



Save Worry – When runs out of battery



Emergency Power via Power Bank



Unlock with Backup Key

Figure 6: Entering a passcode on the keypad for entry.

## 5. MAINTENANCE

### 5.1 Battery Management

The eLinkSmart H8 lock is designed for low power consumption, providing up to 12 months of standby time on 4 AAA alkaline batteries. The lock will provide a low battery warning when power is running low.

In case of complete battery depletion, an emergency power port (USB-C) is available on the exterior handle. Connect a power bank to this port to temporarily power the lock and gain access. Alternatively, use the mechanical backup keys.

# LONG-TERM USE GUARANTEE TESTING



Ensuring long-term reliability and durability



**100,000**

Usage Test



**144 Hour**

Salt Spray and Humidity  
Test



**3000N**

Appearance Pressure  
Resistance



Figure 7: Battery compartment and emergency power options.

## 5.2 Cleaning

Clean the lock's exterior surfaces with a soft, damp cloth. Avoid using abrasive cleaners or solvents, as these can damage the finish and electronic components.

## 6. TROUBLESHOOTING

- **Lock not responding:** Check battery levels. If low, use emergency power or mechanical key. Ensure the handle is properly installed and all cables are connected.
- **Fingerprint not recognized:** Ensure your finger is clean and dry. Try re-registering your fingerprint through the mobile app.

- **Passcode not working:** Verify the correct passcode is being entered. Check for temporary passcode expiration if applicable.
- **App connectivity issues:** Ensure Bluetooth is enabled on your smartphone and the lock is within range. Restart the app or your phone if necessary.

If issues persist, refer to the detailed troubleshooting section in the full user manual or contact customer support.

## 7. PRODUCT SPECIFICATIONS

Feature	Detail
Brand	eLinkSmart
Model Number	H8
Lock Type	Fingerprint, Code, Smart, Keypad Handle
Unlocking Ways	Fingerprint, Passcode, Mobile App, Apple Watch, Mechanical Key
Material	Alloy Steel, Zinc
Item Dimensions (L x W x H)	6.3 x 2.6 x 2.6 inches
Item Weight	1.8 Pounds
Power Source	4 x AAA Batteries (not included)
Connectivity Protocol	Bluetooth
Controller Type	Android, iOS
Recommended Uses	Bedroom, Interior, Front Door, Room, Home, Hotel, Garage, Apartment, Cloakroom, Pantry, Closet, Office, School

## 8. WARRANTY AND SUPPORT

eLinkSmart provides a 12-month warranty and free lifetime technical support for the H8 Smart Door Lock. For any queries, replacements, or refunds within the warranty period, please contact customer support.

**Customer Support Email:** [hongjdzwj@outlook.com](mailto:hongjdzwj@outlook.com)