

Manuals.plus /

› OTTOCAST /

› OTTOCAST Mini Cube 3.0 Wireless CarPlay & Android Auto Adapter User Manual

OTTOCAST OTTOCAST Mini Slim

OTTOCAST Mini Cube 3.0 Wireless CarPlay & Android Auto Adapter User Manual

Model: OTTOCAST Mini Slim

Brand: OTTOCAST

INTRODUCTION

The OTTOCAST Mini Slim is a compact 2-in-1 wireless adapter designed to convert your car's existing wired CarPlay or Android Auto system into a wireless experience. This device offers fast auto-reconnection and supports dual-band 2.4Ghz + 5Ghz Wi-Fi for stable performance. It aims to provide a seamless and clutter-free integration of your smartphone with your vehicle's infotainment system.

WHAT'S IN THE BOX?

- OTTOCAST Mini Slim Adapter
- USB Plug Adapter (Type-A to Type-C)
- User Manual
- Product Packaging

Smart Guidance for Smooth Pairing



Car Supports
Wired CarPlay/Android Auto



Supports Phone iOS 10+
and Android 11+



Enable Phone's Bluetooth,
Wi-Fi, and Mobile Data

Image: The OTTOCAST Mini Slim box contents, showing the compact adapter, a USB-A to USB-C adapter, and the user manual.

Your browser does not support the video tag.

Video: This video demonstrates the unboxing of the OTTOCAST Mini Slim, showcasing the adapter, the USB-C adapter, and the included user manual.

SETUP INSTRUCTIONS

1. Step 1: Insert the Adapter

Insert the OTTOCAST Mini Slim into your car's USB port (USB-A or USB-C using the provided adapter). The device will power on, and a Bluetooth pairing prompt will appear on your car's display.

Seamless Setup in Just 3 Simple Steps

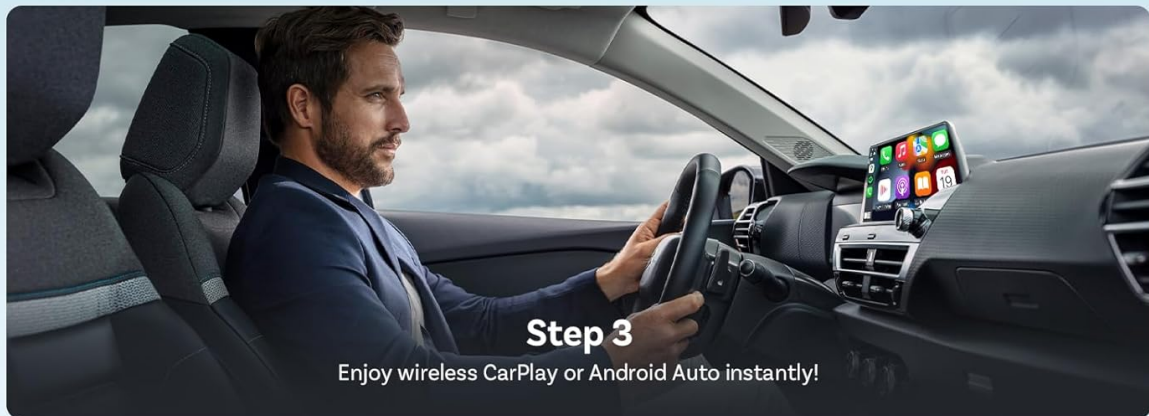
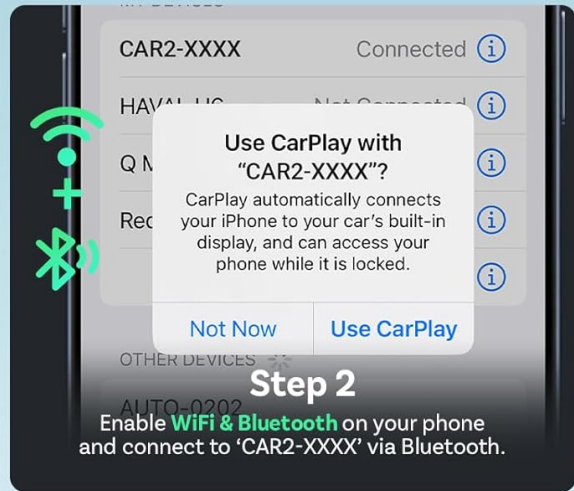


Image: A close-up view of the OTTOCAST Mini Slim being inserted into a car's USB port, illustrating the first step of the setup process.

2. Step 2: Enable Phone's Bluetooth and Wi-Fi

On your smartphone, enable both Bluetooth and Wi-Fi. Connect to the device named "CAR2-XXXX" via Bluetooth. Your phone will then automatically establish a Wi-Fi connection with the adapter.



Image: A smartphone screen displaying the steps to enable Wi-Fi and Bluetooth and connect to the "CAR2-XXXX" device for

pairing.

3. Step 3: Confirm CarPlay/Android Auto Connection

A prompt will appear on your car's display asking to use CarPlay or Android Auto. Confirm the connection. Your wireless CarPlay or Android Auto will now be active.



Image: The car's infotainment screen displaying a prompt to confirm the use of CarPlay with the connected device.

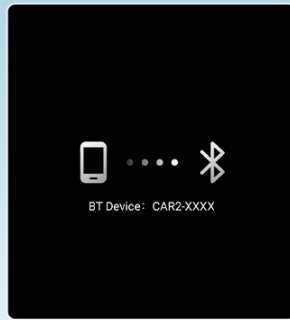
For cars with a Type-C port, use the included USB-A to USB-C adapter to connect the Mini Slim.

Seamless Wireless Upgrade in 30 Seconds



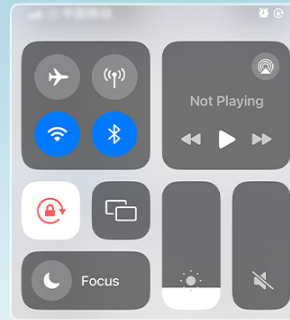
Step 1

Insert into your car's USB port



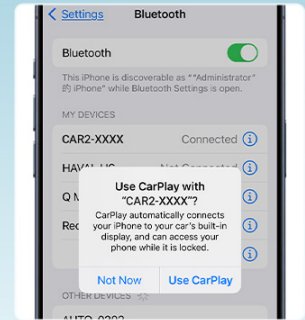
Step 2

Wait for the CarPlay/Android Auto prompt



Step 3

Activate Wi-Fi & Bluetooth on your phone



Step 4

Select "CAR2-XXXX" to finish pairing

Image: Illustration demonstrating how the OTTOCAST Mini Slim can be connected to both USB-A and USB-C ports in a car using the appropriate adapter.

OPERATING INSTRUCTIONS

Once successfully paired, the OTTOCAST Mini Slim will automatically connect to your last-paired phone within 5-8 seconds when you start your car. The device supports both Wireless CarPlay and Wireless Android Auto, allowing access to navigation, music, calls, and calendar functions directly on your car's display.

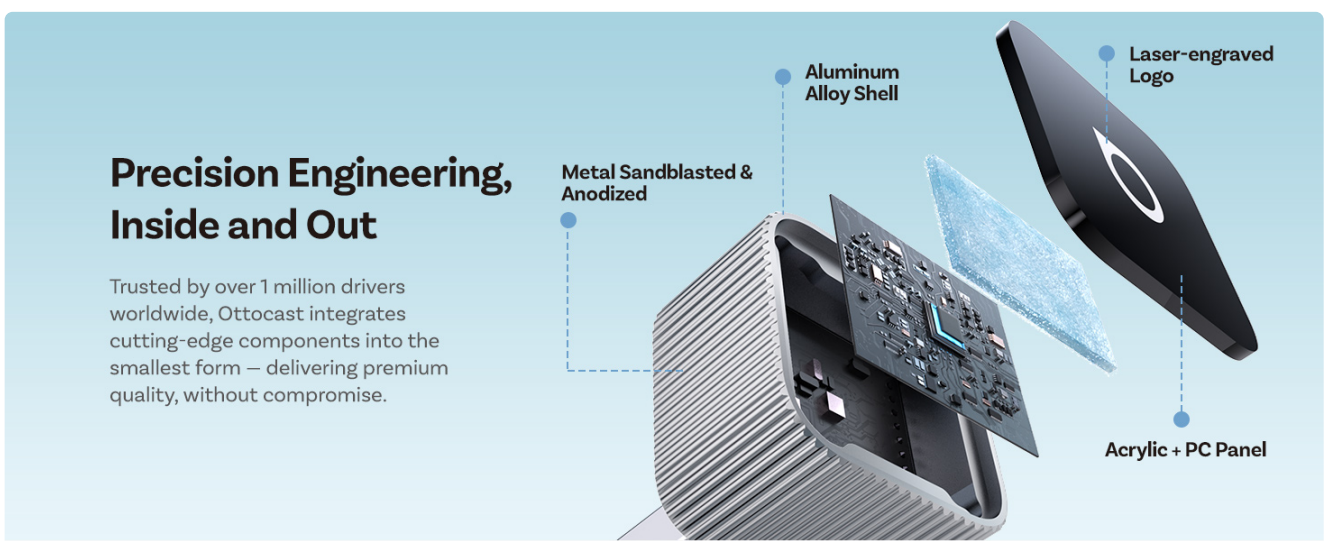
- **Automatic Reconnection:** The adapter is designed for quick and automatic reconnection to the last used device upon starting the vehicle.
- **Multi-Device Support:** The device can remember up to two paired phones. It will automatically connect to the last paired phone.
- **Retain Original Car Controls:** All original car controls, including touchscreen, steering wheel buttons, rotary knobs, Siri, and Google Voice, remain fully functional with the wireless connection.
- **Voice Control:** Utilize Siri or Google Assistant for hands-free control of navigation, calls, and music.

Advanced Materials, Premium Feel

Every detail crafted for durability, style, and a premium feel in your car.



Image: A car's infotainment screen displaying the CarPlay interface with various applications like navigation, music, and phone calls.



Precision Engineering, Inside and Out

Trusted by over 1 million drivers worldwide, Ottocast integrates cutting-edge components into the smallest form – delivering premium quality, without compromise.

Image: Three panels demonstrating the continued functionality of OEM knob control, touchscreen control, and steering wheel buttons when using the wireless adapter.

Ready for Any Car

Connect with Ease, No Matter Your USB Port Type



Image: An illustration of a driver and passenger using voice commands with Siri and Google Assistant for navigation and other functions in a car.

COMPATIBILITY

The OTTOCAST Mini Slim is compatible with 98% of cars that come with factory-installed wired CarPlay or Android Auto. It supports iPhones with iOS 10+ and Android phones with Android 11+.

Important Notes:

- Not compatible with BMW or Tesla models.
- YouTube/Netflix and similar video streaming services are not supported through this adapter.
- It is normal for the device to feel slightly warm during operation.

Seamlessly Connect Your Car & Phone

iOS 10+ / Android 11+ Supported



Still Unsure About Compatibility?
Scan Here To Check!



<https://check.adaptermanual.com/AMZ/>

Original Wired CarPlay/Android Auto Cars

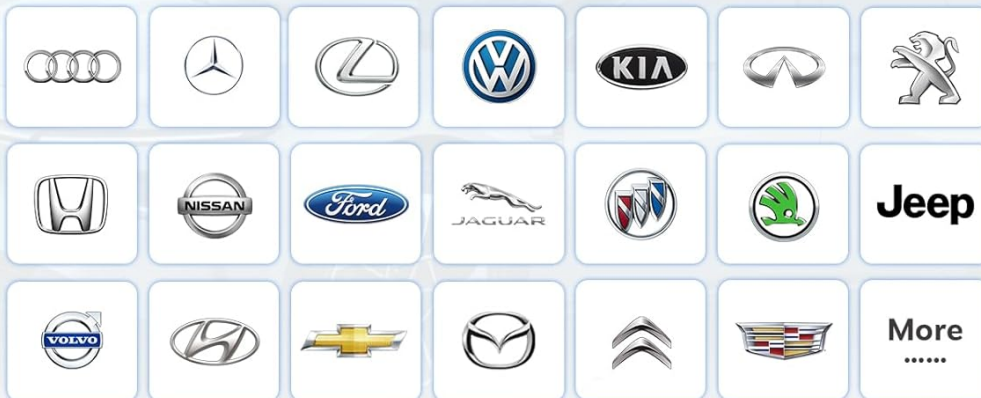


Image: A visual guide indicating car brands compatible with the OTTOCAST Mini Slim, along with a QR code for checking specific vehicle compatibility.

For detailed vehicle compatibility, please visit: <https://check.adaptermanual.com/AMZ/>

Will It Work With Your Smartphone?

Compatible with iOS 10+ and Android 11+ Devices



iOS 10.0+
for **Wireless CarPlay**



Android 11.0+
for **Wireless Android Auto**

Image: An illustration showing various iPhone models compatible with iOS 10+ for Wireless CarPlay and Android phone models

MAINTENANCE

The OTTOCAST Mini Slim supports Over-The-Air (OTA) firmware upgrades to ensure optimal performance and compatibility with future updates. Regularly checking for and installing updates is recommended.

- **Firmware Updates:** Access the update feature through the device's interface or a dedicated app (refer to the user manual for specific instructions).

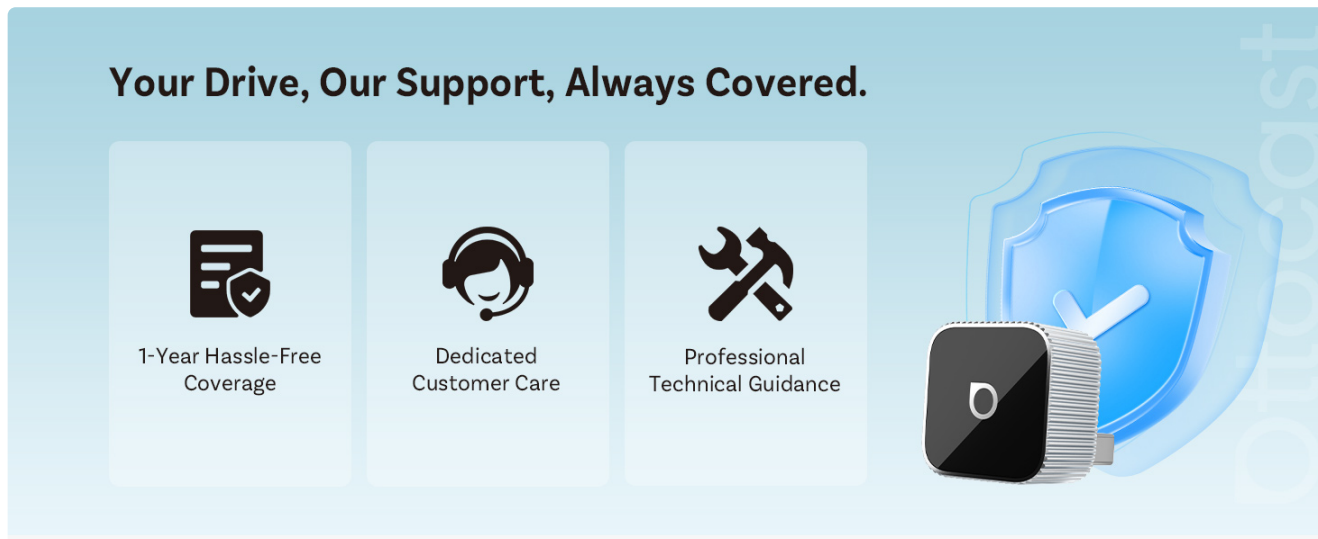


Image: A smartphone screen displaying options for checking and performing firmware updates for the OTTOCAST device, with a note about resolving common issues through updates.

TROUBLESHOOTING

If you encounter issues with your OTTOCAST Mini Slim, consider the following common solutions:

- **Connection Issues:**
 - Ensure your car's wired CarPlay/Android Auto system is functional before connecting the adapter.
 - Verify that Bluetooth and Wi-Fi are enabled on your smartphone and correctly paired with "CAR2-XXXX".
 - Restart your car and phone, then re-attempt the connection process.
 - Check for and install any available firmware updates for the OTTOCAST Mini Slim.
- **Audio or Call Quality:**
 - If experiencing delays or poor audio quality during calls, ensure your phone's cellular signal is strong.
 - Sometimes, interference can occur. Try repositioning the adapter if possible, or temporarily disconnect and reconnect.
- **Device Not Recognized:**
 - Confirm your car model is listed as compatible. Refer to the compatibility section or the provided link.
 - Ensure the USB port in your car is active and provides power.

For persistent issues, refer to the detailed user manual or contact OTTOCAST customer support.

SPECIFICATIONS

Product Dimensions	0.81 x 0.93 x 0.81 inches (2.07 x 2.35 x 2.07 cm)
Item Weight	1.44 ounces
Model Number	OTTOCAST Mini Slim
Connectivity Technology	Bluetooth 5.0, Wi-Fi (2.4Ghz + 5Ghz Dual-Band)
Special Features	2-in-1 Wireless CarPlay & Android Auto, Automatic reconnection, Ultra mini design
Processor	A7S Dual-Core Processor
Material	Aluminum Alloy Shell, Acrylic + PC Panel

Retain Your Original Car Controls

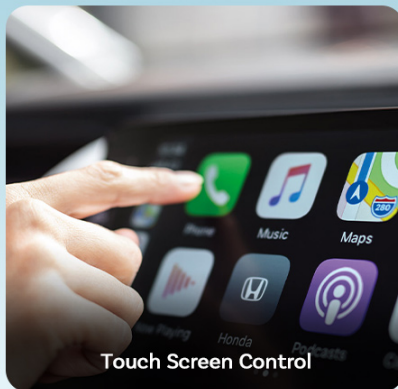


Image: An exploded view diagram illustrating the advanced materials and precision engineering of the OTTOCAST Mini Slim, including its aluminum alloy shell and internal components.

Mini Size, Maximum Convenience



Image: A visual comparison highlighting the compact size of the OTTOCAST Mini Slim, shown next to a smartphone and a human finger for scale.

WARRANTY AND SUPPORT

The OTTOCAST Mini Slim comes with 2 years of dedicated OTTOCAST support. This includes:

- 1-Year Hassle-Free Coverage
- Dedicated Customer Care
- Professional Technical Guidance

For assistance, please refer to the contact information provided in your product packaging or visit the official OTTOCAST website.

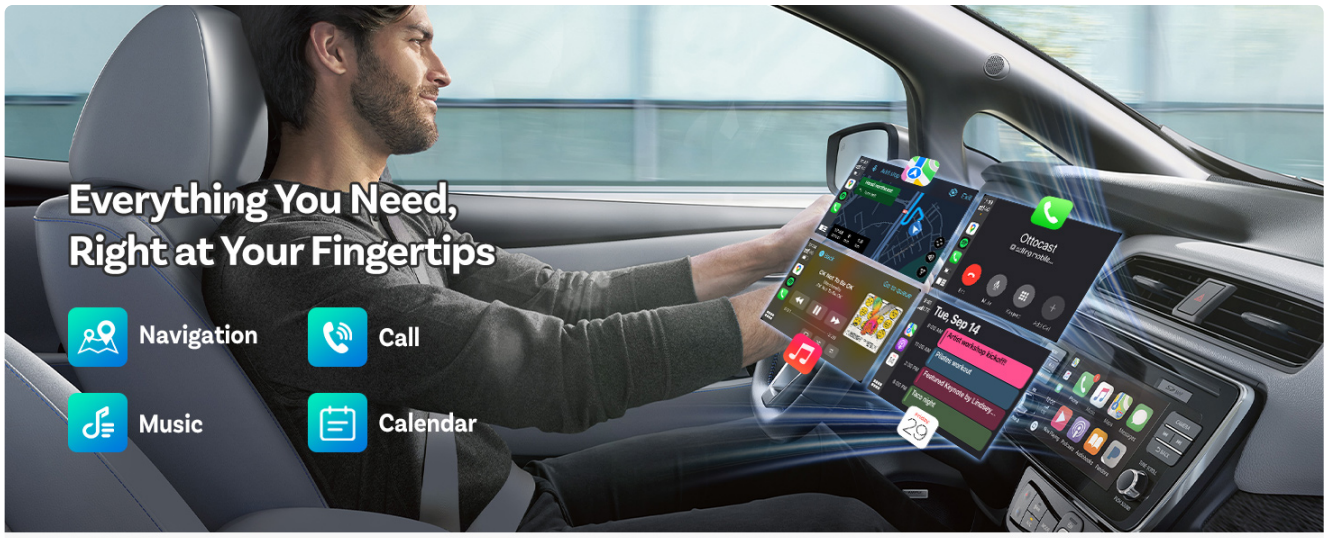


Image: An illustration depicting the comprehensive support offered by OTTOCAST, including warranty coverage, customer care, and technical guidance.