

Manuals+

[Q & A](#) | [Deep Search](#) | [Upload](#)

Manuals.plus /

› [VOOPEAK](#) /

› VOOPEAK 4G LTE Trail Camera TC27-1 User Manual

VOOPEAK TC27-1

VOOPEAK 4G LTE Trail Camera TC27-1 User Manual

Model: TC27-1 | Brand: VOOPEAK

1. INTRODUCTION

This manual provides essential instructions for the setup, operation, and maintenance of your VOOPEAK 4G LTE Trail Camera TC27-1. Please read this guide thoroughly before using the device to ensure optimal performance and longevity.



Figure 1: VOOPEAK 4G LTE Trail Camera TC27-1

2. KEY FEATURES

- **4G LTE Cellular Connectivity:** Built-in SIM card compatible with major US carriers (Verizon, T-Mobile, AT&T). No Wi-Fi required. Includes trial data for new users.
- **2.5K HD Video & Color Night Vision:** Captures high-definition 2560x1440 video. Offers color night vision when ambient brightness exceeds 0.5 lux, otherwise switches to infrared black and white.
- **Solar Powered with Built-in Battery:** Equipped with a 6W solar panel and a 10400mAh battery for extended operation, providing up to one year of standby time.
- **360° Pan & 90° Tilt Remote Control:** Adjust camera direction (355° pan, 90° tilt) remotely via the UCon app for optimal wildlife monitoring.
- **Motion-Activated Notifications & Playback:** Receives real-time alerts on your phone. Supports video and image storage on Micro SD card (up to 128GB) or cloud service (30-day free trial).

- **Durable & Waterproof Design:** IP66 waterproof rating, suitable for various outdoor environments.

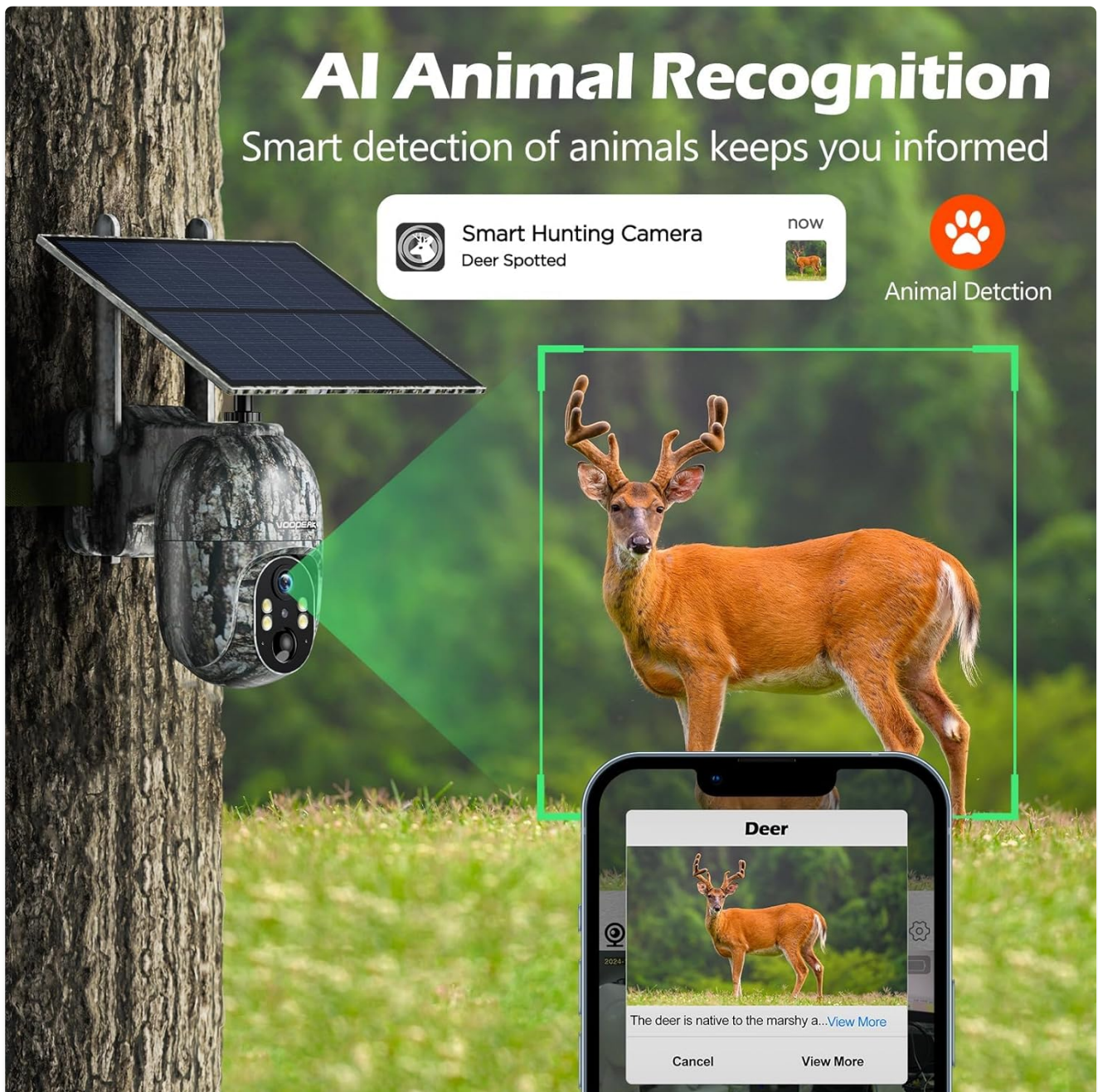


Figure 2: AI Animal Recognition feature in action.

3. PACKAGE CONTENTS

Upon unboxing, verify that all items listed below are present and in good condition:

- VOOPEAK 4G LTE Trail Camera (TC27-1)
- Solar Panel (integrated)
- Mounting Hardware (screws, wall anchors, tree strap)
- USB Charging Cable
- User Manual (this document)
- Built-in SIM Card (non-removable, pre-installed)
- (Micro SD card not included)

Your browser does not support the video tag.

Video 1: Demonstrates how to connect the solar panel to the camera.

4. SETUP GUIDE

4.1. Initial Charging

Before first use, ensure the camera's built-in battery is fully charged. Connect the camera to a power source using the provided USB cable. The solar panel will maintain charge during outdoor use.

4.2. SIM Card Activation & Data Plan

Your camera comes with a built-in, non-removable SIM card. New users receive 100MB trial data for 7 days. To activate and manage your data plan, download the UCon app and follow the in-app instructions. Data plans are required for cellular functionality.



Figure 3: Information regarding the built-in SIM card and data plans.

4.3. Micro SD Card Installation (Optional)

The camera supports a Micro SD card up to 128GB for local storage. Locate the SD card slot, insert the card with the contacts facing down, and gently push until it clicks into place. Ensure the waterproof cover is securely closed after installation.

4G LTE Cellular Trail Camera Included SIM Card



Figure 4: Location of the built-in SIM card and Micro SD card slot.

4.4. Mounting the Camera

Choose a suitable location with good cellular signal and direct sunlight exposure for the solar panel. Use the provided mounting hardware (screws, wall anchors, or tree strap) to secure the camera. Ensure the camera is stable and has a clear view of the desired monitoring area.

Install Once, Use Forever

10400mAh + 6W solar panel, never need to frequently remove and charge



Figure 5: Trail camera installed on a tree, powered by its solar panel.

5. OPERATING INSTRUCTIONS

5.1. Downloading the UCon App

Search for "UCon" in your smartphone's app store (iOS or Android) and download the application. Follow the on-screen instructions to register an account and add your camera device.

5.2. Live View and Remote Control

Once connected, you can access live video streaming from your camera through the UCon app. Use the pan (355°) and tilt (90°) controls within the app to adjust the camera's viewing angle remotely.

Your browser does not support the video tag.

Video 2: Guide on adjusting the camera's angle using the UCon app.

2.5K Crystal Clear Live Video View

Easily access high quality videos through the UCon app

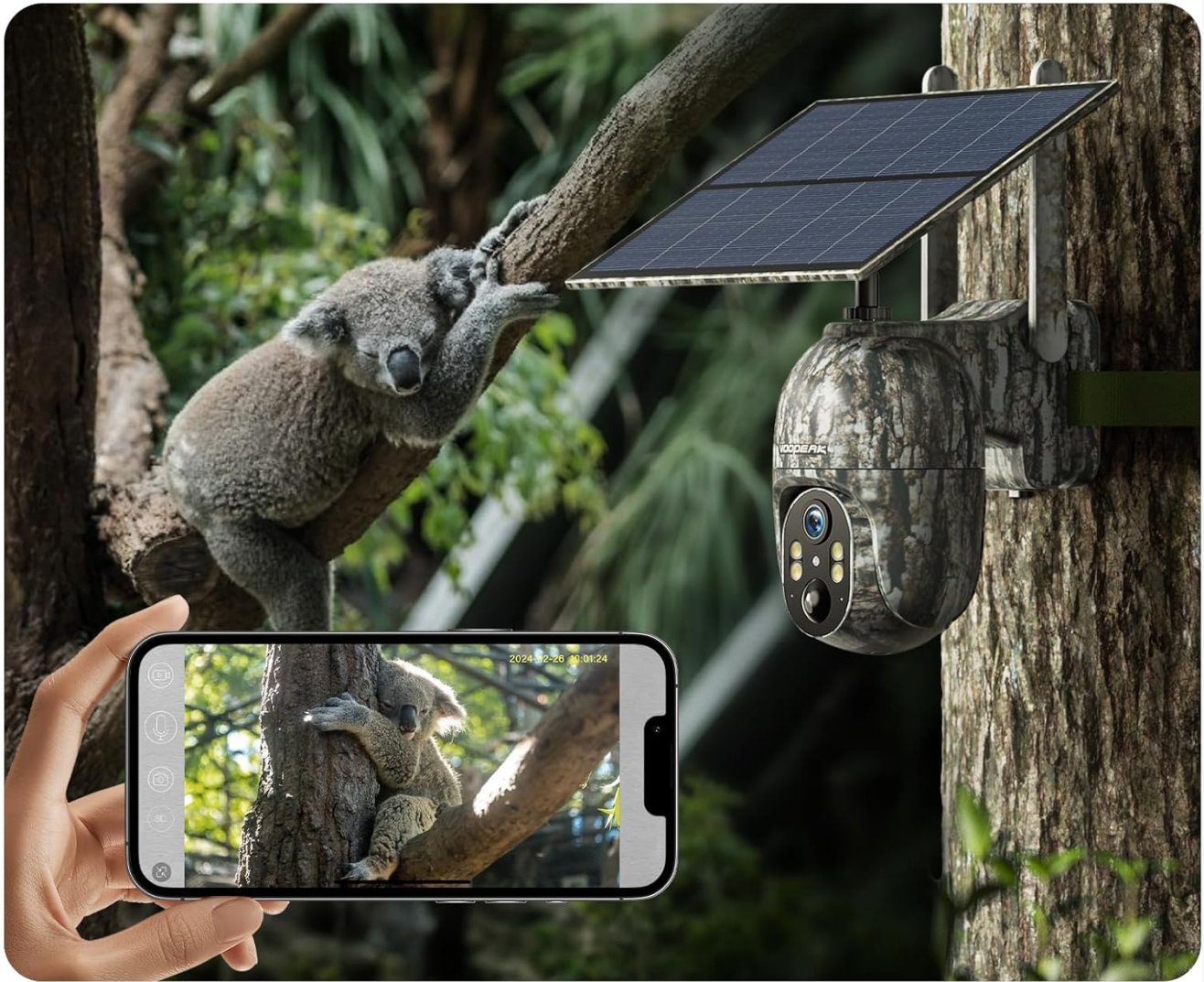


Figure 6: Live 2.5K video view from the UCon app.

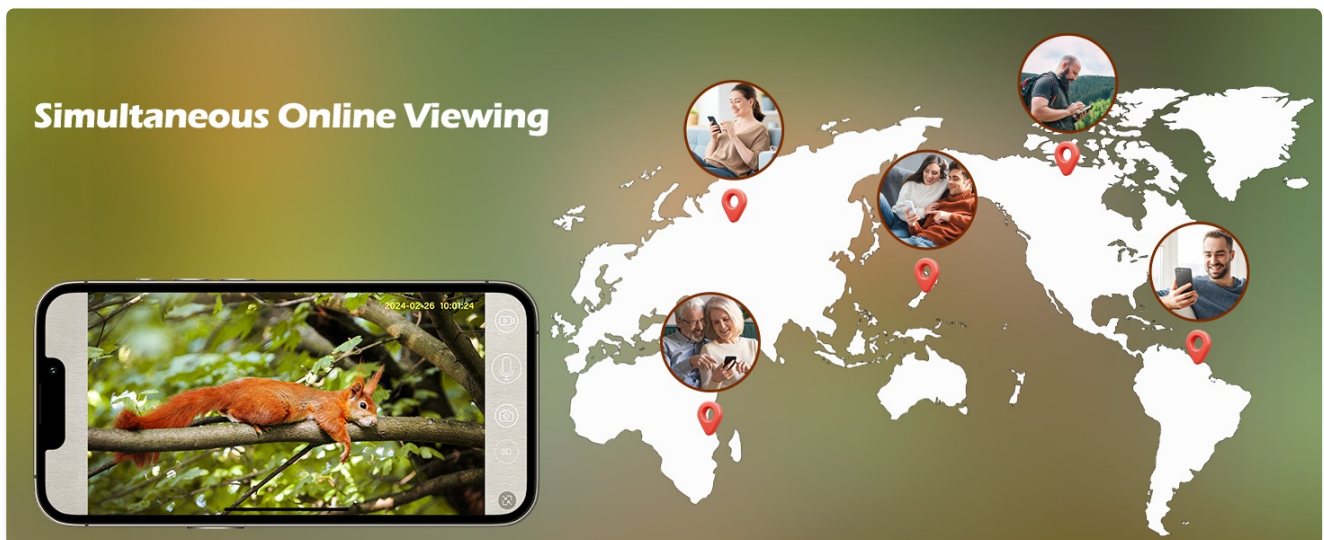


Figure 7: Remote pan and tilt control via the app.

5.3. Motion Detection & Notifications

The camera features motion-activated recording. Ensure app notifications are enabled on your phone to receive real-time alerts when motion is detected. You can review recorded videos and images directly from the app.



Figure 8: Real-time motion notifications on a smartphone.

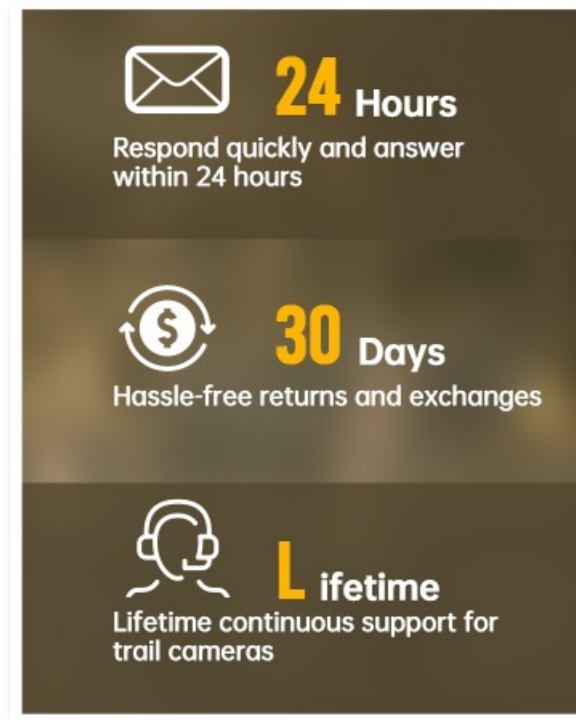


Figure 9: Motion detection of a squirrel.

5.4. Night Vision Modes

The camera offers two night vision modes: color night vision (when ambient light > 0.5 lux) and infrared black & white night vision. The camera automatically switches between modes based on lighting conditions.

Colorful Video at Night

When the ambient brightness is **greater than 0.5lux**,
the image is in full color



Figure 10: Example of colorful video capture at night.

Watch the Live Video via Phone Anytime Anywhere



Figure 11: Day and Color Night Vision comparison.

6. MAINTENANCE

- **Cleaning:** Regularly wipe the camera lens and solar panel with a soft, damp cloth to ensure clear images and efficient charging.
- **Battery Check:** Monitor battery levels via the UCon app. While solar-powered, extreme weather or prolonged low light may require manual charging.
- **Firmware Updates:** Check the UCon app periodically for firmware updates to ensure your camera has the latest features and security enhancements.
- **Data Plan Monitoring:** Keep track of your cellular data usage through the UCon app to avoid service interruptions.

7. TROUBLESHOOTING

Problem	Possible Solution
Camera not connecting to 4G network.	Check cellular signal strength in the camera's location. Ensure your data plan is active and has sufficient balance via the UCon app.
App screen appears black after several days.	This may indicate depleted cellular data. Recharge the SIM card through the UCon app or the website mentioned on the SIM packaging.
No motion detection alerts.	Verify that motion detection is enabled in the UCon app settings. Ensure app notifications are allowed in your phone's system settings. Check camera placement for obstructions.
Poor image/video quality.	Clean the camera lens. Ensure the camera is securely mounted and not vibrating. Check lighting conditions, especially for night vision.
Battery not charging.	Ensure the solar panel is receiving direct sunlight. Check the USB charging cable connection. Verify the solar panel is clean and free of debris.

8. PRODUCT SPECIFICATIONS

Feature	Detail
Model Number	TC35 (Note: Product title refers to TC27-1, but specifications list TC35. Please verify with manufacturer if discrepancy exists.)
Power Source	Solar Powered (with built-in 10400mAh Lithium Metal battery)
Connectivity Protocol	Cellular (4G LTE)

Feature	Detail
Compatible Carriers	Verizon, T-Mobile, AT&T (US only)
Controller Type	Android (via UCon App, also iOS compatible)
Effective Video Resolution	2.5K (2560x1440)
Pan/Tilt Range	Pan 355°, Tilt 90°
Night Vision	Color Night Vision (>0.5 lux), Infrared Black & White Night Vision
Storage	Micro SD Card (up to 128GB, not included), Cloud Service (30-day free trial)
Waterproof Rating	IP66
Product Dimensions	10 x 2 x 2.7 inches
Item Weight	2.51 pounds
UPC	758918449212

9. ADDITIONAL MEDIA

9.1. Wildlife Footage

Your browser does not support the video tag.

Video 3: Example footage captured by the VOOPEAK Trail Camera, showing deer in a natural habitat.

Your browser does not support the video tag.

Video 4: Overview of the TC27 Cellular Trail Camera features.

Your browser does not support the video tag.

Video 5: Demonstration of the 4G LTE Cellular Trail Camera, highlighting solar power capabilities.

Your browser does not support the video tag.

Video 6: Detailed look at the VOOPEAK 4G LTE Cellular Trail Camera.

Your browser does not support the video tag.

Video 7: Features of the 4G Trail Camera.

Your browser does not support the video tag.

Video 8: Additional features of the 4G Cellular Trail Camera.

10. WARRANTY AND SUPPORT

VOOPEAK is committed to providing high-quality products and professional service. For any inquiries or support needs:

- **Customer Service:** Responses typically within 24 hours.
- **Returns & Exchanges:** Hassle-free returns and exchanges within 30 days of purchase.
- **Product Support:** Lifetime continuous support for VOOPEAK trail cameras.

For further assistance, please visit the [VOOPEAK Store on Amazon](#) or contact customer support directly.