

Manuals+

[Q & A](#) | [Deep Search](#) | [Upload](#)

manuals.plus /

- › [HIFI WALKER](#) /
- › [HIFI WALKER T10 Air Bone Conduction Swimming Headphones User Manual](#)

HIFI WALKER T10 Air

HIFI WALKER T10 Air Bone Conduction Swimming Headphones User Manual

Model: T10 Air

INTRODUCTION

The HIFI WALKER T10 Air Bone Conduction Swimming Headphones are designed for active individuals seeking a versatile audio solution. Featuring an IPX8 waterproof rating, a built-in 32GB MP3 player, and Bluetooth 5.3 connectivity, these open-ear headphones provide clear sound while maintaining situational awareness. This manual provides essential information for setup, operation, maintenance, and troubleshooting.

WHAT'S IN THE BOX

- HIFI WALKER Open-Ear Headphones
- Adjustable Straps
- Swimming Earplugs
- Magnetic Charging Cable
- User Manual/Quick Guide

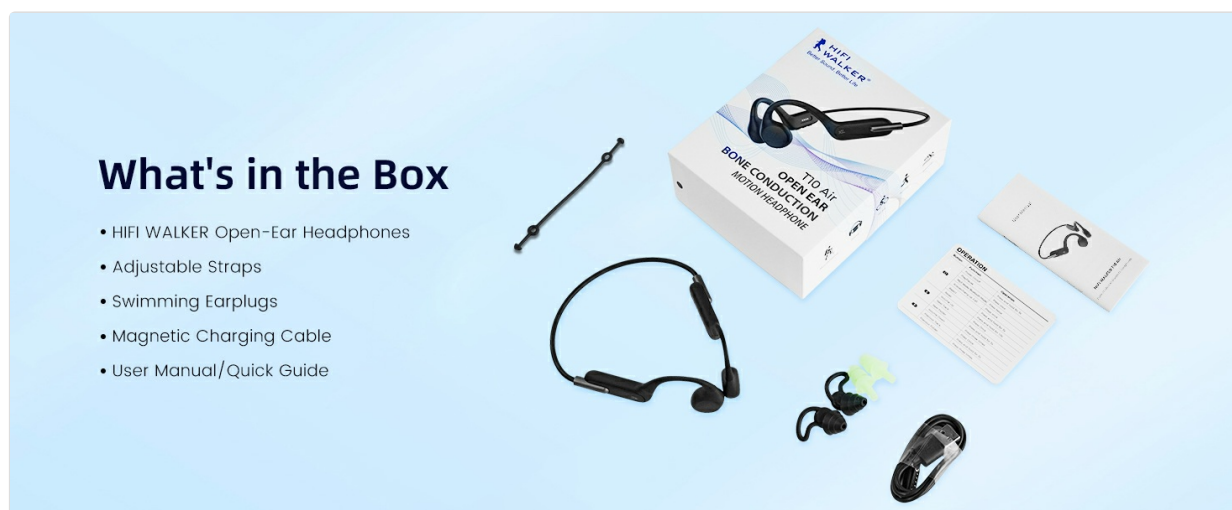


Image: Contents of the HIFI WALKER T10 Air product box, showing the headphones, adjustable straps, swimming earplugs, magnetic charging cable, and user manual.

PRODUCT OVERVIEW AND CONTROLS

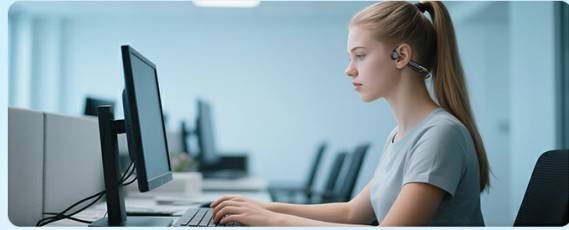


Image: Detailed view of the HIFI WALKER T10 Air headphone controls, including Volume Up/Next Track, Volume Down/Previous Track, Multi-function Button (Power On/Off, Play/Pause), Microphone, and Magnetic waterproof charge/transfer interface.

Volume Up / Next Track: Single click for volume up. Long press for 3 seconds for next song. Triple click for next folder.

Volume Down / Previous Track: Single click for volume down. Long press for 3 seconds for previous song. Triple click for previous folder.

Multi-function Button: Long press for 3 seconds to Power On/Off. Single click to Play/Pause. Double click to switch between MP3/Bluetooth Mode. Tap once to Answer/Hang Up calls. Double tap to Reject Call. Triple tap for Voice Assistant.

Microphone: For hands-free calls.

Magnetic Waterproof Charge/Transfer Interface: For charging and data transfer.

SETUP

1. Charging the Headphones

Before first use, fully charge your T10 Air headphones. Connect the magnetic charging cable to the charging port on the headphones and to a USB power source. The LED indicator will show charging status. A full charge takes approximately 2 hours and provides up to 8 hours of continuous playtime.

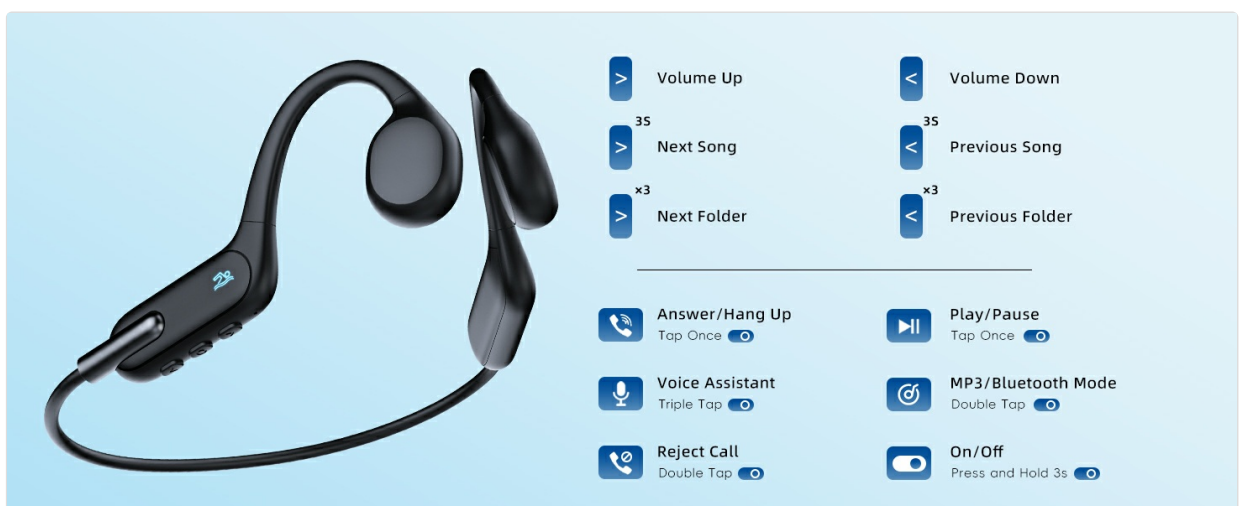


Image: The magnetic charging cable connected to the HIFI WALKER T10 Air headphones, illustrating the charging process and battery life.

2. Power On/Off

To power on, press and hold the Multi-function Button for 3 seconds until the LED indicator lights up. To power off, press and hold the Multi-function Button for 3 seconds until the LED indicator turns off.

3. Bluetooth Pairing

With the headphones powered on, they will automatically enter Bluetooth pairing mode (indicated by a flashing LED). On your smartphone or other Bluetooth-enabled device, search for 'T10 Air' in the Bluetooth settings and select it to pair. The headphones support Bluetooth 5.3 for a stable connection up to 10 meters.



Image: A smartphone displaying its Bluetooth settings, with 'T10 Air' listed as a connected device, demonstrating successful pairing.

4. MP3 Mode and File Transfer

The T10 Air headphones feature a built-in 32GB MP3 player. To switch to MP3 mode, double-click the Multi-function Button. To transfer music files (MP3, WMA, WAV, APE, FLAC), connect the headphones to your computer using the magnetic charging cable. The headphones will appear as a removable drive, allowing you to drag and drop your audio files directly.

OPERATING INSTRUCTIONS

1. Wearing the Headphones

The T10 Air headphones are designed for open-ear comfort and situational awareness. Place the transducers on your cheekbones, just in front of your ears, with the band resting around the back of your head. The lightweight (34g) and ergonomic design ensures a secure and comfortable fit during various activities.

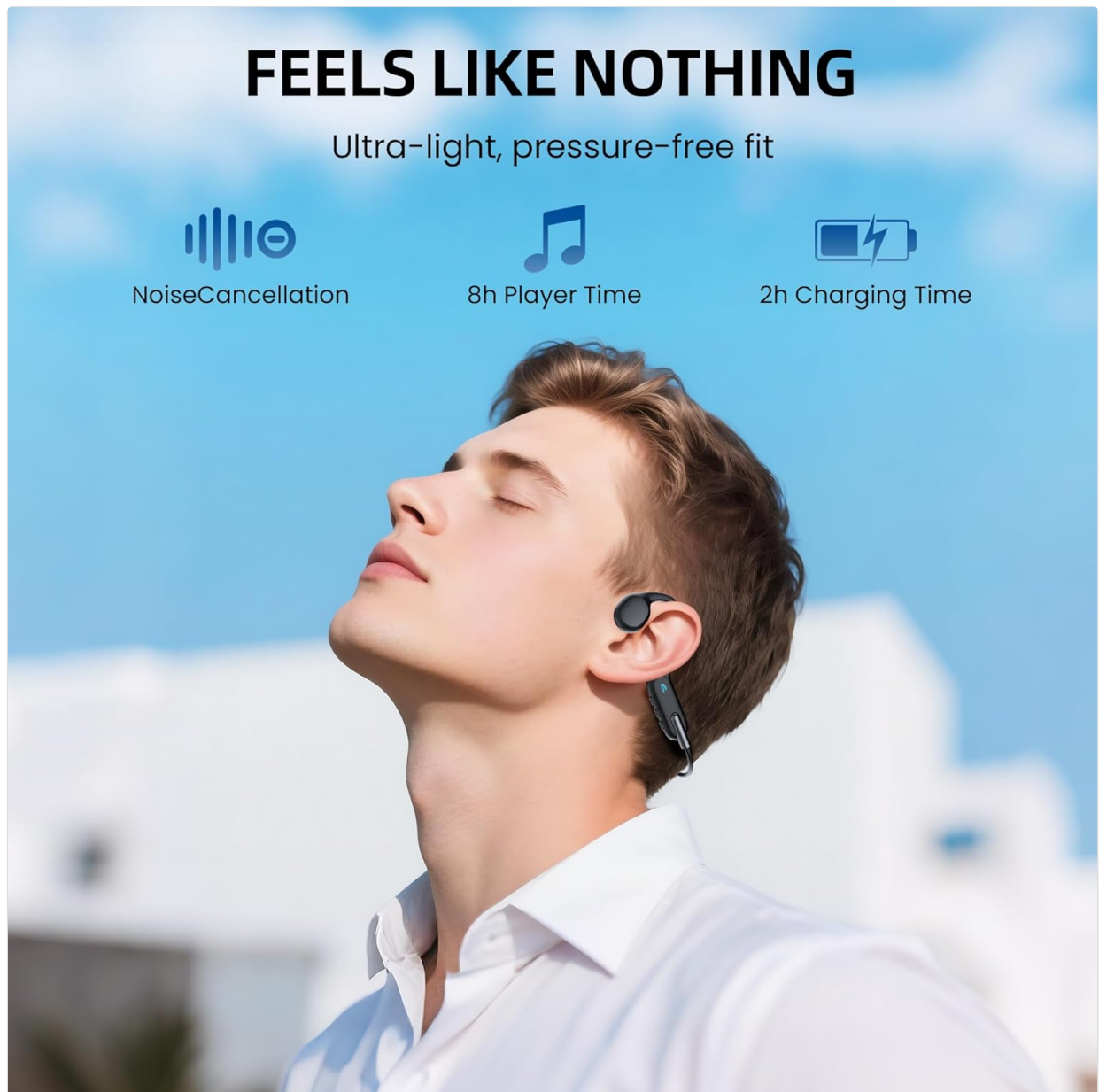


Image: A man wearing the HIFI WALKER T10 Air headphones, highlighting their lightweight and open-ear design for comfort during activities.

2. Music Playback and Call Management

Refer to the 'Product Overview and Controls' section for detailed button functions for playing music, adjusting volume, skipping tracks, managing calls, and activating the voice assistant.

3. Using in Water (Swimming Mode)

The T10 Air headphones are IPX8 waterproof, making them suitable for swimming, snorkeling, and other water sports. When using underwater, ensure the headphones are in MP3 mode, as Bluetooth signals cannot transmit through water. For optimal sound quality and comfort during swimming, consider using the included swimming earplugs.

SWIM WITHOUT LIMITS

IPX8 waterproof, music even underwater.



Image: A man swimming in a pool while wearing the HIFI WALKER T10 Air headphones, demonstrating their waterproof capability for aquatic activities.

MAINTENANCE

- **Cleaning:** Wipe the headphones with a soft, damp cloth after each use, especially after exposure to sweat or chlorinated water. Ensure the charging port is dry before charging.
- **Storage:** Store the headphones in a cool, dry place away from direct sunlight and extreme temperatures.
- **Water Exposure:** While IPX8 rated, prolonged exposure to saltwater or harsh chemicals should be avoided. Rinse with fresh water after use in such environments.

TROUBLESHOOTING

Issue	Possible Solution
Headphones do not power on.	Ensure the headphones are fully charged. Press and hold the Multi-function Button for 3 seconds.

Issue	Possible Solution
Cannot pair via Bluetooth.	Ensure headphones are in Bluetooth mode (double-click Multi-function Button). Check if the device is within 10 meters. Restart both headphones and the device.
No sound in MP3 mode.	Ensure headphones are in MP3 mode. Check if music files are properly transferred to the internal 32GB memory. Adjust volume.
Charging not working.	Ensure the magnetic charging cable is correctly aligned and connected. Check the USB power source. Ensure the charging port is dry.


SPECIFICATIONS






Feature	Detail
Model Name	T10 Air (HW-T10AIR-0509-BLK)
Connectivity	Bluetooth 5.3
Bluetooth Range	Up to 10 meters (33 feet)
Water Resistance	IPX8 (Waterproof)
Internal Storage	32GB MP3 Player (supports MP3, WMA, WAV, APE, FLAC)
Battery Life	Up to 8 hours playtime
Charging Time	Approximately 2 hours
Weight	34 grams
Material	Silicone, Titanium Alloy
Noise Control	Active Noise Cancellation
Earpiece Shape	Open-Ear

WARRANTY AND SUPPORT

HIFI WALKER products are manufactured to high quality standards. For warranty information, technical support, or customer service inquiries, please refer to the contact details provided on the product packaging or the official HIFI WALKER website. Keep your purchase receipt for warranty claims.

Related Documents - T10 Air

	<p>HIFI WALKER T10 Air Bone Conduction Headphones User Manual</p> <p>User manual for the HIFI WALKER T10 Air Bone Conduction Bluetooth Headphones, detailing setup, operation, specifications, and maintenance.</p>
---	---

	<p>HIFI WALKER T10 Air Bone Conduction Headphones User Manual</p> <p>User manual for the HIFI WALKER T10 Air Bone Conduction Bluetooth Headphones, covering setup, operation, specifications, and maintenance.</p>
	<p>HIFI WALKER G7 Pro Android Player User Manual - Features and Specifications</p> <p>Official user manual for the HIFI WALKER G7 Pro Android Player. Discover its features, technical specifications, operating instructions, and troubleshooting tips for this portable high-fidelity audio device.</p>
	<p>HIFI WALKER H2 Digital Audio Player User Manual</p> <p>Comprehensive user manual for the HIFI WALKER H2 Digital Audio Player, covering setup, features, specifications, and troubleshooting.</p>
	<p>HIFI WALKER H2 Digital Audio Player User Manual</p> <p>Comprehensive user manual for the HIFI WALKER H2 Digital Audio Player, covering setup, features, specifications, and troubleshooting.</p>
	<p>HIFI WALKER H2 Digital Audio Player User Manual</p> <p>User manual for the HIFI WALKER H2 portable lossless music player, covering setup, operation, settings, specifications, and troubleshooting.</p>