

Phanteks PH-PGPUKT5.0_xxx

Phanteks Premium Gen5 Vertical GPU Bracket (PH-PGPUKT5.0_xxx) User Manual

Model: PH-PGPUKT5.0_xxx | Brand: Phanteks

1. INTRODUCTION

This manual provides detailed instructions for the installation, operation, and maintenance of the Phanteks Premium Gen5 Vertical GPU Bracket. This product is designed to vertically mount your graphics card, offering both aesthetic enhancement and robust support, while ensuring full PCI Express 5.0 performance and integrated D-RGB lighting.

Please read these instructions carefully before installation to ensure proper setup and to prevent damage to your components.

2. PACKAGE CONTENTS

Verify that all components are present in the package:

- Premium Vertical GPU Bracket
- PCIe 5.0 Riser Cable (integrated)
- Mounting Hardware (screws, standoffs)
- User Manual (this document)

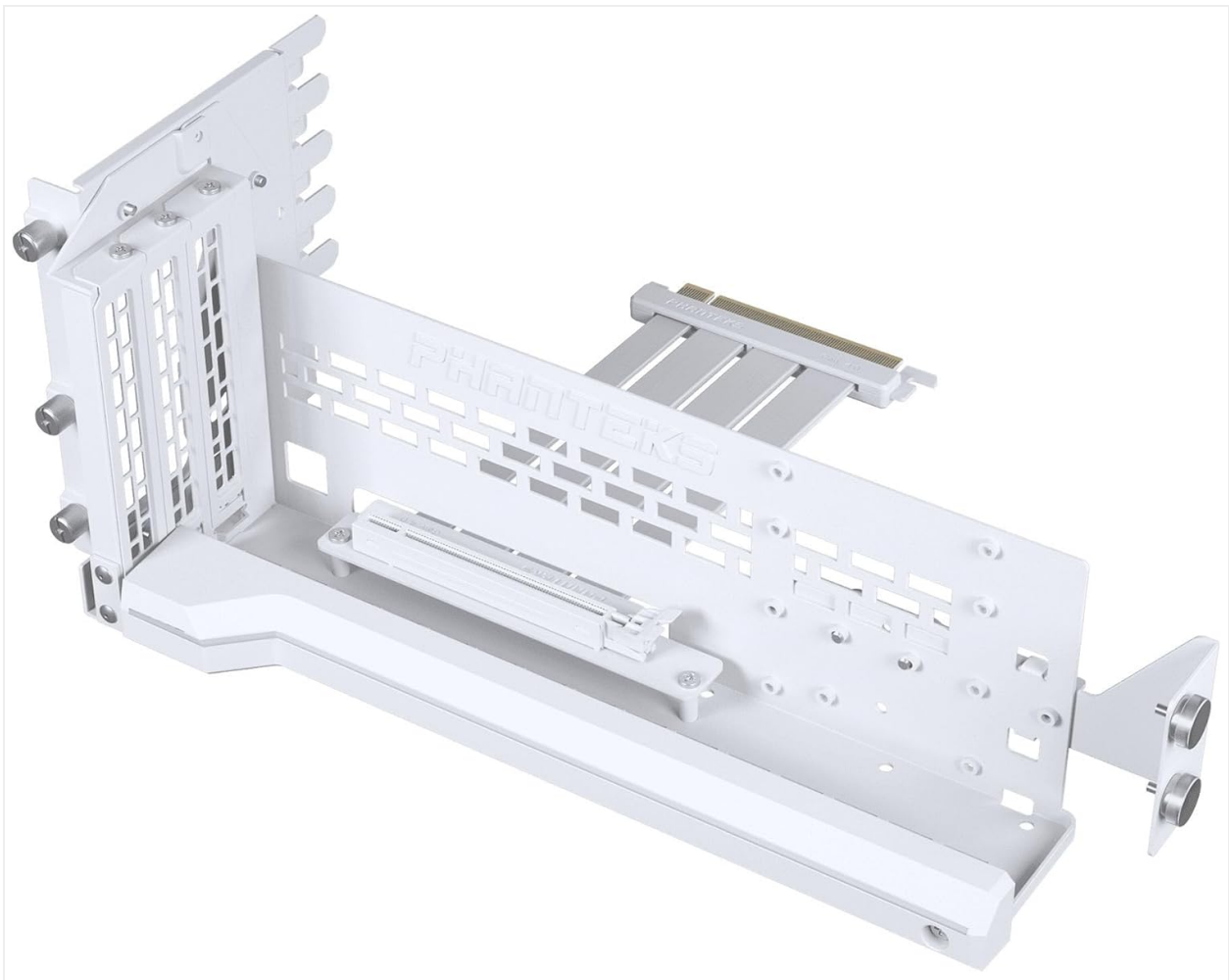


Figure 2.1: Overview of the Phanteks Premium Gen5 Vertical GPU Bracket, showing the main bracket and integrated PCIe 5.0 riser cable.

3. SETUP AND INSTALLATION

Before beginning installation, ensure your computer is powered off and disconnected from the main power supply. It is recommended to wear an anti-static wrist strap to prevent electrostatic discharge (ESD) damage to components.

3.1 Compatibility Check

- Requires a chassis with at least 7 open PCI slot areas.
- Compatible with most standard ATX cases.
- Ensure sufficient clearance for your GPU and cooling solution.

3.2 Installation Steps

1. **Prepare the Chassis:** Remove the rear PCI slot covers from your computer case. You will need access to at least 7 open slots.
2. **Install the Bracket:** Position the vertical GPU bracket inside your chassis. Align the mounting holes of the bracket with the screw holes in your case's PCI slot area. Secure the bracket using the provided screws.

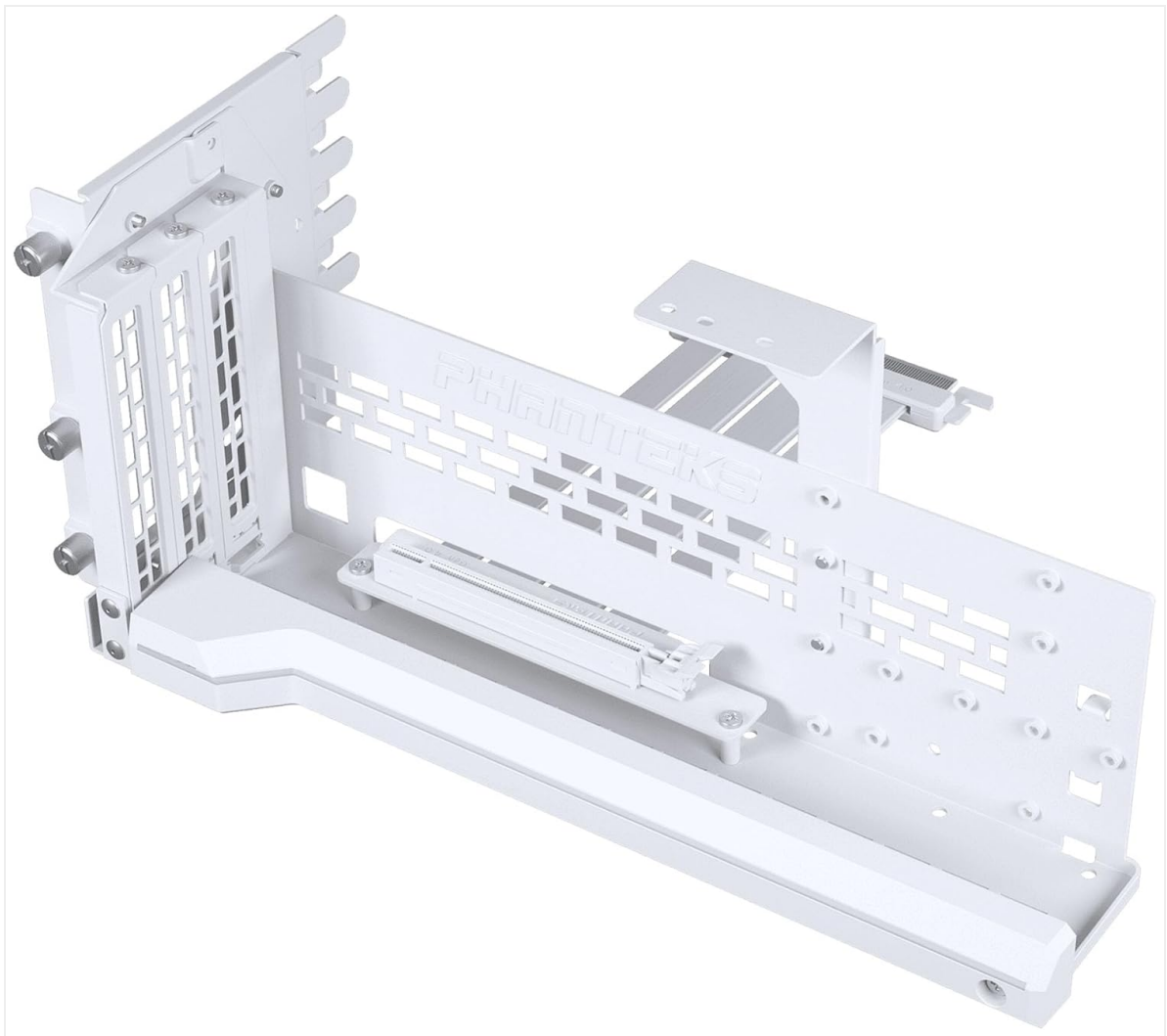


Figure 3.1: The vertical GPU bracket secured within a PC chassis, ready for graphics card installation.

3. **Adjust GPU Position (Optional):** The bracket supports tilted positions up to 30 degrees. Adjust the bracket's angle as desired before securing the GPU.

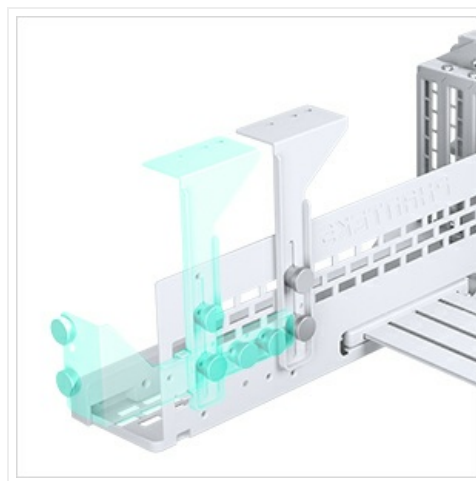


Figure 3.2: Illustration of the adjustable tilt feature, allowing the GPU to be angled for optimal display or airflow.

4. **Install the Graphics Card:** Carefully insert your graphics card into the PCIe 5.0 slot on the vertical GPU bracket. Ensure it is fully seated.
5. **Secure the Graphics Card:** Use the secure GPU mounting system to physically hold the GPU to the bracket. This typically involves screws or a latch mechanism.



Figure 3.3: A graphics card securely installed on the vertical GPU bracket, showcasing its vertical orientation.

6. **Connect the Riser Cable:** Connect the integrated PCIe 5.0 riser cable from the vertical bracket to the corresponding PCIe x16 slot on your motherboard. Ensure a firm connection.
7. **Connect D-RGB Cable:** Connect the D-RGB cable from the bracket to an available 3-pin D-RGB header on your motherboard or a compatible D-RGB controller.

4. OPERATING INSTRUCTIONS (D-RGB LIGHTING)

The Phanteks Premium Gen5 Vertical GPU Bracket features integrated D-RGB lighting. To control the lighting effects:

- If connected to a motherboard D-RGB header, use your motherboard's lighting control software (e.g., ASUS Aura Sync, MSI Mystic Light, Gigabyte RGB Fusion, ASRock Polychrome Sync) to customize colors and effects.
- If connected to a Phanteks D-RGB controller (sold separately), use the controller's physical buttons or associated software for customization.



Figure 4.1: The vertical GPU bracket with its D-RGB lighting active, enhancing the visual appeal of the system.

5. MAINTENANCE

Regular maintenance helps ensure the longevity and optimal performance of your vertical GPU bracket:

- **Cleaning:** Periodically clean the bracket and riser cable with a soft, dry cloth to remove dust. Avoid using liquid cleaners directly on the components.
- **Cable Inspection:** Occasionally check the PCIe riser cable and D-RGB cable connections to ensure they are secure and free from damage.
- **Mounting Security:** Verify that the GPU and bracket remain securely mounted within the chassis.

6. TROUBLESHOOTING

If you encounter issues with your Phanteks Premium Gen5 Vertical GPU Bracket, refer to the following common solutions:

- **GPU Not Detected:**
 - Ensure the PCIe 5.0 riser cable is fully seated in both the GPU and the motherboard's PCIe x16

slot.

- Verify that your motherboard's BIOS/UEFI settings are configured correctly for PCIe Gen5 operation, or try setting the PCIe slot speed to Gen4 or Gen3 as a test.
- Test the GPU directly in the motherboard's PCIe slot to rule out a GPU issue.

• **D-RGB Lighting Not Working:**

- Check that the D-RGB cable is securely connected to a compatible 3-pin D-RGB header on your motherboard or controller.
- Ensure your motherboard's lighting software is installed and updated, and that the D-RGB header is enabled.
- Confirm that the D-RGB header is receiving power.

• **Physical Instability:**

- Re-check all mounting screws for the bracket and the GPU to ensure they are tightened appropriately.
- Ensure the chassis itself is stable and on a flat surface.

7. SPECIFICATIONS

Model Name	Premium Gen5 Vertical GPU Bracket
Part Number	PH-PGPUKT5.0_DWT01
Item Model Number	PH-PGPUKT5.0_xxx
Brand	Phanteks
Color	White
Material	Powder coated steel, ABS plastic
Product Dimensions	14.37 x 6.69 x 7.28 inches
Item Weight	2.93 pounds
PCIe Standard	PCIe x16 Gen5.0
Lighting	Integrated D-RGB
Compatible Devices	Desktop, Gaming Console (referring to PC cases)
UPC	886523004059

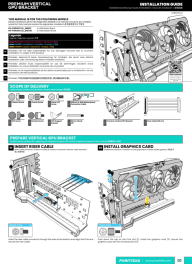
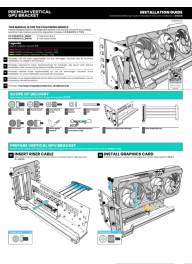
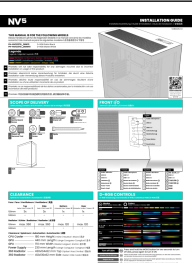

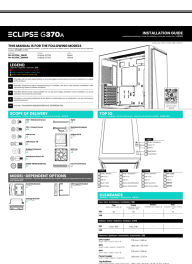

8. WARRANTY AND SUPPORT

Phanteks products are designed and manufactured to the highest quality standards. For detailed warranty information, please refer to the official Phanteks website or the warranty card included with your product. For technical support, troubleshooting assistance, or to inquire about replacement parts, please visit the official Phanteks support page:

[Phanteks Support Website](#)

When contacting support, please have your product model number (PH-PGPUKT5.0_xxx) and proof of purchase ready.

Related Documents - PH-PGPUKT5.0_xxx

	<p>Phanteks Premium Vertical GPU Bracket Installation Guide</p> <p>Comprehensive installation guide for the Phanteks Premium Vertical GPU Bracket, detailing how to mount your graphics card vertically for improved aesthetics and airflow. Includes parts list, step-by-step instructions, and compatibility information.</p>
	<p>Phanteks Premium Vertical GPU Bracket Installation Guide</p> <p>Comprehensive installation guide for the Phanteks Premium Vertical GPU Bracket (models PH-PGPUKT5.0_DBK01, PH-PGPUKT5.0_DWT01). Covers scope of delivery, preparation, bracket installation (universal/NVIDIA), motherboard offset, PSU cover, angle adjustment, and GPU installation into the case.</p>
	<p>Phanteks NV5 PC Case Installation Guide</p> <p>Comprehensive installation guide for the Phanteks NV5 PC case, covering hardware installation, panel removal, and D-RGB controls. Includes specifications and multilingual support.</p>
	<p>Phanteks Eclipse G500A Installation Guide</p> <p>Comprehensive installation guide for the Phanteks Eclipse G500A PC case, covering panel removal, hardware installation, storage mounting, and D-RGB controls.</p>
	<p>Phanteks Eclipse G370A Installation Guide</p> <p>Comprehensive installation guide for the Phanteks Eclipse G370A PC case, covering panel removal, hardware installation, GPU mounting, and cable management.</p>
	<p>Phanteks XT Pro Ultra Installation Guide: Triple SSD Bracket and Case Features</p> <p>Comprehensive installation guide for the Phanteks XT Pro Ultra PC case, detailing triple SSD bracket setup, D-RGB lighting, safety precautions, component clearances, and hardware installation steps. Includes model information and specifications.</p>

