

CP PLUS CP-E41Q

CP PLUS 4MP Smart Wi-Fi CCTV Camera CP-E41Q User Manual

Comprehensive Guide for Installation, Operation, and Maintenance

1. INTRODUCTION

This manual provides detailed instructions for the installation, operation, and maintenance of your CP PLUS 4MP Smart Wi-Fi CCTV Camera, model CP-E41Q. Please read this manual thoroughly before using the product to ensure proper function and safety. Keep this manual for future reference.

2. SAFETY INFORMATION

- Ensure the power supply matches the camera's requirements.
- Do not expose the camera to water or moisture. This product is designed for indoor use only.
- Avoid placing the camera in direct sunlight or near heat sources.
- Do not attempt to disassemble or modify the camera. Contact authorized service personnel for repairs.
- Keep the camera and its accessories out of reach of children.

3. PACKAGE CONTENTS

Verify that all items are present in your package:

- CP PLUS CP-E41Q Camera
- Power Adapter
- Charging Cable
- Stand
- Mounting Screws
- User Manual (this document)



Image: CP PLUS CP-E41Q Camera and included accessories. This image displays the main camera unit, power adapter, charging cable, stand, and mounting screws, which are typically found in the product packaging.

4. PRODUCT OVERVIEW

The CP PLUS CP-E41Q is a 4MP Smart Wi-Fi CCTV Camera designed for indoor security. It features 360° pan and tilt capabilities, 15-meter night vision, two-way audio, and smart detection functions to enhance your home or office security.

Key Features:

- **4MP Ultra HD Resolution:** Captures clear 2560x1440 video.
- **360° Pan & Tilt:** Offers 355° horizontal pan and 71° vertical tilt for wide coverage.
- **15M IR Night Vision:** Provides clear surveillance in low-light conditions up to 15 meters.
- **Two-Way Audio:** Allows for real-time communication through the camera.
- **Smart Detection Suite:** Includes motion detection, human detection, sound detection, and motion tracking with instant alerts.
- **Cloud Recording & MicroSD Support:** Flexible storage options up to 256GB.
- **CTC Cyber Secure Tech:** Ensures data privacy and security.



Image: Front view of the CP PLUS CP-E41Q Smart Wi-Fi Camera. This image shows the camera lens, indicator lights, and the CP PLUS branding on the base.

5. SETUP GUIDE

5.1 Physical Installation

1. **Choose a Location:** Select an indoor location with a stable Wi-Fi signal and a power outlet nearby.

The camera can be placed on a tabletop or mounted on a ceiling/wall using the provided stand and screws.

2. **Power On:** Connect the charging cable to the camera and the power adapter, then plug the adapter into a power outlet. The camera will power on and initiate its startup sequence.
3. **Insert MicroSD Card (Optional):** If you plan to use local storage, gently insert a MicroSD card (up to 256GB, Class 10 or higher recommended) into the designated slot on the camera. Ensure the camera is powered off before inserting or removing the card.

5.2 App Installation and Network Connection (EZYKAM+ App Integration)

To set up your camera and connect it to your Wi-Fi network, follow these steps using the EZYKAM+ app:

1. **Download EZYKAM+ App:** Download the "EZYKAM+" app from the Apple App Store (for iOS devices) or Google Play Store (for Android devices).
2. **Register Account:** Open the app and register a new user account or log in if you already have one.
3. **Add Device:** On the app's home page, click the "+" icon to add a new device. Select the model number of your camera (CP-E41Q) from the list.
4. **Connect to Wi-Fi:** Enter your Wi-Fi network name (SSID) and password when prompted in the app. Ensure your phone is connected to a 2.4GHz Wi-Fi network, as the camera supports 2.4GHz only.
5. **Scan QR Code:** The app will generate a QR code. Hold your phone with the QR code in front of the camera lens (approximately 15-20 cm away) until you hear a voice prompt from the camera indicating successful scanning ("Heard the beep").
6. **Complete Configuration:** Wait for the camera's indicator light to turn steady blue, signifying a successful connection and configuration. The camera is now ready for use.

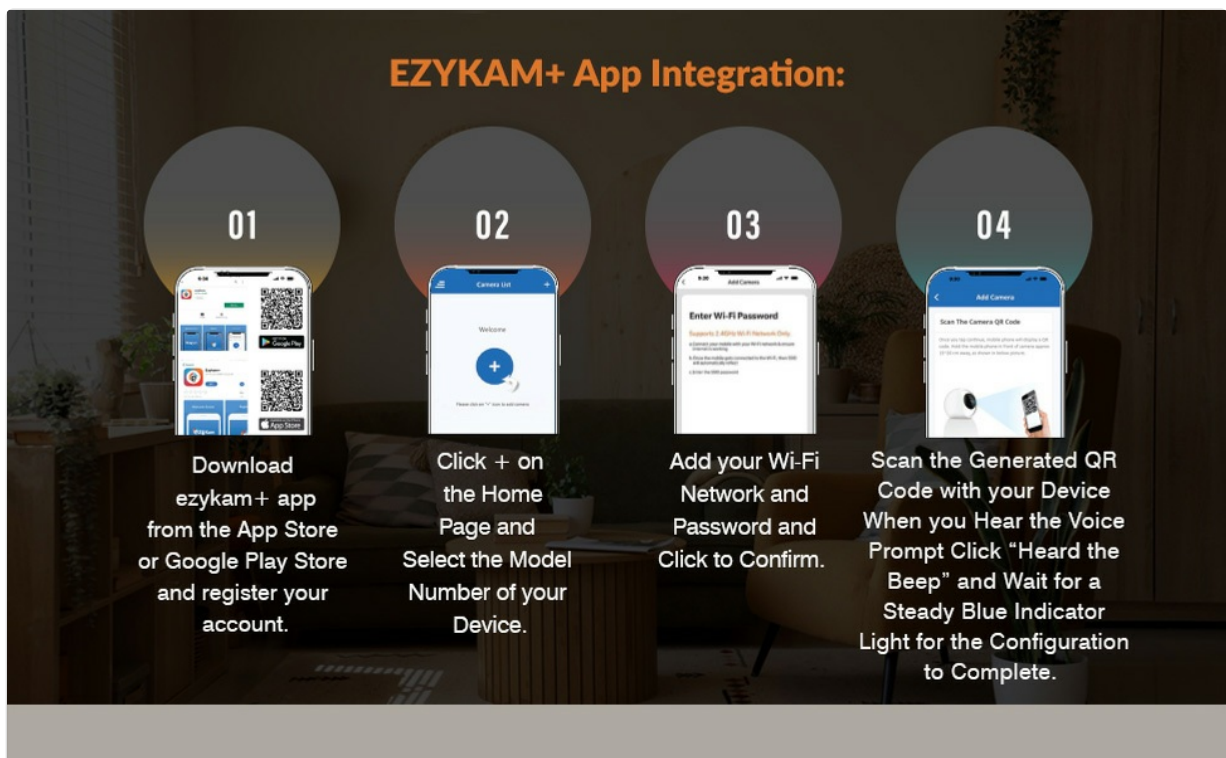


Image: EZYKAM+ App Integration Steps. This visual guide illustrates the four main steps for connecting the camera to the EZYKAM+ mobile application: downloading the app, adding the device, entering Wi-Fi details, and scanning the QR code.

6. OPERATING INSTRUCTIONS

Once your camera is set up and connected, you can access and control it via the EZYKAM+ app.

6.1 Live View and Pan & Tilt Control

- Open the EZYKAM+ app and select your CP-E41Q camera from the device list to access the live video feed.
- Use the on-screen joystick or swipe gestures to control the camera's 355° pan (horizontal rotation) and 71° tilt (vertical movement) to view different areas.



Image: CP PLUS CP-E41Q demonstrating 360-degree view. This image shows the camera's ability to pan and tilt, providing full room coverage without blind spots, as indicated by the circular arrows around the camera.

6.2 Two-Way Audio

- From the live view screen, tap the microphone icon to enable two-way audio.
- Press and hold the talk button to speak through the camera's speaker. Release to listen.



Two-Way Communication

Talk Anytime, Anywhere

Image: CP PLUS CP-E41Q Two-Way Communication feature. This image depicts a user interacting with someone via the camera's two-way audio function, allowing for remote conversation.

6.3 Night Vision

- The camera automatically switches to infrared (IR) night vision mode in low-light conditions, providing clear black-and-white video up to 15 meters.
- You can manually toggle night vision settings (Auto/On/Off) within the app's camera settings.

6.4 Recording and Storage

- **MicroSD Card Recording:** If a MicroSD card is inserted, the camera will record continuously or based on motion detection, depending on your settings. Access recorded footage via the app's playback feature.
- **Cloud Recording:** Subscribe to CP PLUS cloud storage services for secure, off-site storage of your video recordings. This ensures footage is safe even if the camera is tampered with.



Image: CP PLUS CP-E41Q Cloud Recording feature. This image illustrates how video data is securely stored in the cloud, accessible from various devices, ensuring memories are safely preserved.

6.5 Smart Detection Suite

Configure these features in the EZYKAM+ app settings for your camera:

- **Motion Detection:** Receive instant alerts on your smartphone when motion is detected in the camera's field of view.
- **Human Detection:** Advanced algorithms differentiate human shapes from other moving objects, reducing false alarms.
- **Sound Detection:** Get alerts for unusual sounds detected by the camera's microphone.
- **Motion Tracking:** When motion is detected, the camera can automatically pan and tilt to follow the moving object or person.
- **Built-in Siren:** Activate the camera's siren remotely or set it to trigger automatically upon detection of suspicious activity.

 **CP PLUS**



Image: CP PLUS CP-E41Q Motion Tracking feature. This image demonstrates the camera's ability to automatically track movement, ensuring continuous surveillance of moving subjects.



Image: CP PLUS CP-E41Q Sound Detection feature. This image illustrates the camera's capability to detect and alert users to sounds, providing an additional layer of security monitoring.



Image: CP PLUS CP-E41Q Built-in Siren feature. This image shows the camera's siren function, designed to deter intruders or alert occupants to detected security events.

6.6 Privacy Mode

- Activate Privacy Mode through the EZYKAM+ app to temporarily disable video recording and live viewing, ensuring privacy when desired. The camera lens will physically retract or turn away.

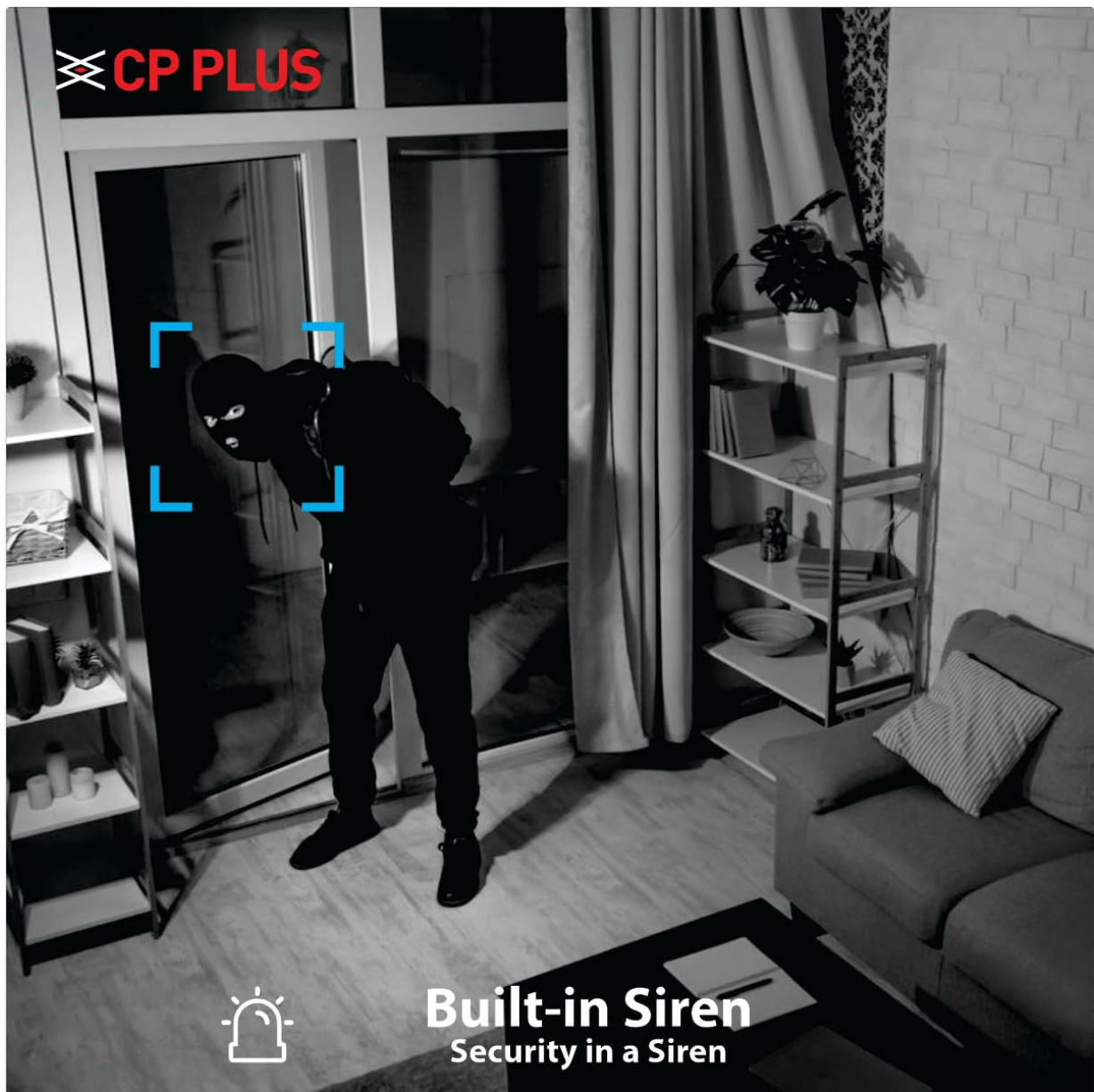


Image: CP PLUS CP-E41Q Privacy Mode. This image illustrates the camera in privacy mode, where the lens is obscured or retracted, ensuring personal privacy when monitoring is not required.

7. MAINTENANCE

- **Cleaning:** Use a soft, dry cloth to clean the camera lens and body. Do not use liquid cleaners or abrasive materials.
- **Firmware Updates:** Regularly check the EZYKAM+ app for available firmware updates. Keeping your camera's firmware updated ensures optimal performance, security, and access to new features.
- **Power Cycle:** If the camera experiences issues, try unplugging it from the power source for 10 seconds and then plugging it back in.

8. TROUBLESHOOTING

Problem	Possible Cause	Solution
---------	----------------	----------

Problem	Possible Cause	Solution
Camera fails to connect to Wi-Fi.	Incorrect Wi-Fi password, weak signal, 5GHz network used.	<ul style="list-style-type: none">• Ensure correct 2.4GHz Wi-Fi password is entered.• Move camera closer to the router.• Verify your router supports 2.4GHz and your phone is connected to it during setup.
No live video feed.	Camera offline, network issue, app error.	<ul style="list-style-type: none">• Check camera's power and Wi-Fi connection.• Restart the EZYKAM+ app.• Reboot the camera and your router.
Motion detection alerts are too frequent or not working.	Sensitivity settings, detection zone.	<ul style="list-style-type: none">• Adjust motion detection sensitivity in the app.• Define specific detection zones to exclude irrelevant areas.• Ensure notifications are enabled for the app on your phone.
Poor night vision quality.	Obstructions, IR reflection.	<ul style="list-style-type: none">• Ensure there are no objects directly in front of the camera reflecting the IR light.• Clean the camera lens.

9. SPECIFICATIONS

Model Number	CP-E41Q
Resolution	4MP (2560x1440)
Pan/Tilt Range	Pan: 355°, Tilt: 71°
Night Vision	15 meters IR Night Vision
Connectivity	Wi-Fi (2.4GHz only)
Storage Options	MicroSD card (up to 256GB), Cloud Recording
Audio	Two-Way Audio
Detection Features	Motion Detection, Human Detection, Sound Detection, Motion Tracking
Power Source	Corded Electric

Indoor/Outdoor Usage	Indoor
Dimensions (LxWxH)	7.7 x 7.7 x 10.7 cm
Weight	176 g

10. WARRANTY AND SUPPORT





CP PLUS products are designed for reliability and performance. For warranty information, please refer to the warranty card included with your product or visit the official CP PLUS website. Keep your purchase receipt as proof of purchase.

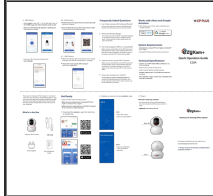
For technical support, troubleshooting assistance, or service inquiries, please contact CP PLUS customer support through their official channels. You can typically find contact information on the CP PLUS website or within the EZYKAM+ app.

Online Resources: For additional guides, FAQs, and software downloads, visit the official CP PLUS support page.

© 2025 CP PLUS. All rights reserved.
This manual is subject to change without notice.

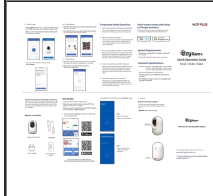
Related Documents - CP-E41Q

	<p>CP PLUS ezykam+ Wi-Fi Camera Quick Operation Guide</p> <p>A comprehensive guide to setting up and using your CP PLUS ezykam+ Wi-Fi camera, including installation, app usage, troubleshooting, and technical specifications.</p>
	<p>CP PLUS ezyKam+ Quick Operation Guide for Wi-Fi Security Cameras</p> <p>Comprehensive quick operation guide for CP PLUS ezyKam+ Wi-Fi security cameras, including models E21, E21A, E31A, and E41A. Learn about setup, connecting to Wi-Fi, using the ezykam+ app, frequently asked questions, system requirements, and technical specifications.</p>
	<p>CP PLUS ezykam+ Quick Operation Guide for CP-E51AR/E81AR</p> <p>Quick start guide for CP PLUS ezykam+ Wi-Fi cameras (models CP-E51AR and E81AR), covering setup, features, technical specifications, and troubleshooting.</p>
	<p>CP PLUS ezyKam+ E27A Quick Operation Guide</p> <p>A quick operation guide for the CP PLUS ezyKam+ E27A Wi-Fi Camera, covering setup, FAQs, system requirements, and technical specifications.</p>



[CP PLUS ezyKam+ E28A Wi-Fi Camera: Quick Operation Guide](#)

Comprehensive quick operation guide for the CP PLUS ezyKam+ E28A Wi-Fi camera, covering setup, FAQs, system requirements, technical specifications, and integration with Alexa and Google Assistant.



[CP PLUS ezyKam+ Quick Operation Guide: Setup and Usage](#)

Comprehensive guide for setting up and operating CP PLUS ezyKam+ Wi-Fi security cameras (models E24A, E34A, E44A), including installation, app usage, FAQs, and technical specifications.