

## Manuals+

[Q & A](#) | [Deep Search](#) | [Upload](#)

manuals.plus /

- › [NIMO](#) /
- › [NIMO 15.6-inch Light Gaming Laptop N15A User Manual](#)

## NIMO N15A

# NIMO 15.6-inch Light Gaming Laptop N15A User Manual

Model: N15A

## INTRODUCTION

This manual provides essential information for the NIMO 15.6-inch Light Gaming Laptop N15A. It covers setup, operation, maintenance, troubleshooting, and product specifications. Please read this manual thoroughly before using your new laptop to ensure proper function and longevity.



## PACKAGE CONTENTS

---

Verify that all items listed below are present in your product packaging. If any items are missing or damaged, please contact NIMO customer support.

- 1 x NIMO N15A Laptop
- 1 x Type-C 100W PD Fast Charger
- 1 x User Manual
- Windows 11 Home Operating System (pre-installed)

## PRODUCT OVERVIEW

---

The NIMO N15A laptop is designed for balanced performance, featuring an AMD Ryzen 7 Pro 6850U processor, 32GB LPDDR5 RAM, and a 1TB PCIe 4.0 SSD. It includes a 15.6-inch Full HD IPS display, a backlit keyboard, and an integrated fingerprint reader for secure access.

### Key Features:

- **Processor:** AMD Ryzen 7 Pro 6850U with 8 Cores and 16 Threads, up to 4.7GHz.
- **Graphics:** Integrated AMD Radeon 680M GPU.
- **Memory:** 32GB LPDDR5 RAM for efficient multitasking.
- **Storage:** 1TB PCIe 4.0 SSD for fast boot times and data access.
- **Display:** 15.6-inch Full HD (1920x1080) IPS Anti-Glare Display.
- **Charging:** 100W USB-C Power Delivery fast charging.
- **Security:** Integrated fingerprint reader for secure login.
- **Keyboard:** Backlit keyboard for use in various lighting conditions.

# AMD Ryzen 7 Pro 6850U up to 4.7 GHz

680M iGPU Radeon UP to 16GB  $\approx$  1650GTX  
Balanced performance for productivity & gaming.

**8**

Cores

**16**

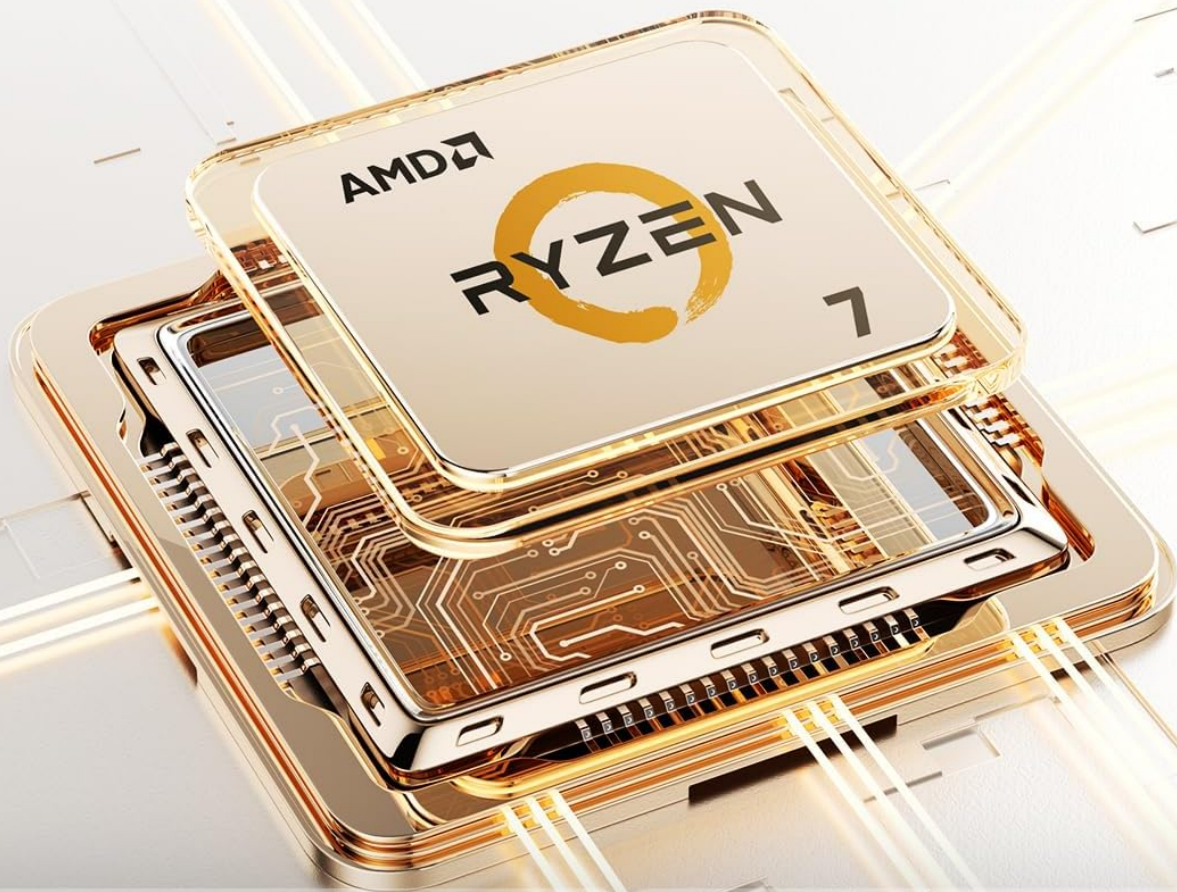
Threads

**680M**

GPU Radeon

**4.7GHz**

Turbo Boost



**Ryzen 7 PRO 6850U**

Intel Core i7-11800H

Intel Core i7-1260P

**AMD Radeon 680M**

NVIDIA GeForce GTX 1650 Max-Q

NVIDIA GeForce GTX 1050 Ti Max-Q

Image: Visual representation of the AMD Ryzen 7 Pro 6850U processor's core and thread count, and turbo boost speed.



# AMD Radeon™ 680M Graphics

One of the most capable integrated GPUs available



Image: Illustration highlighting the capabilities of the AMD Radeon 680M integrated graphics for various applications.



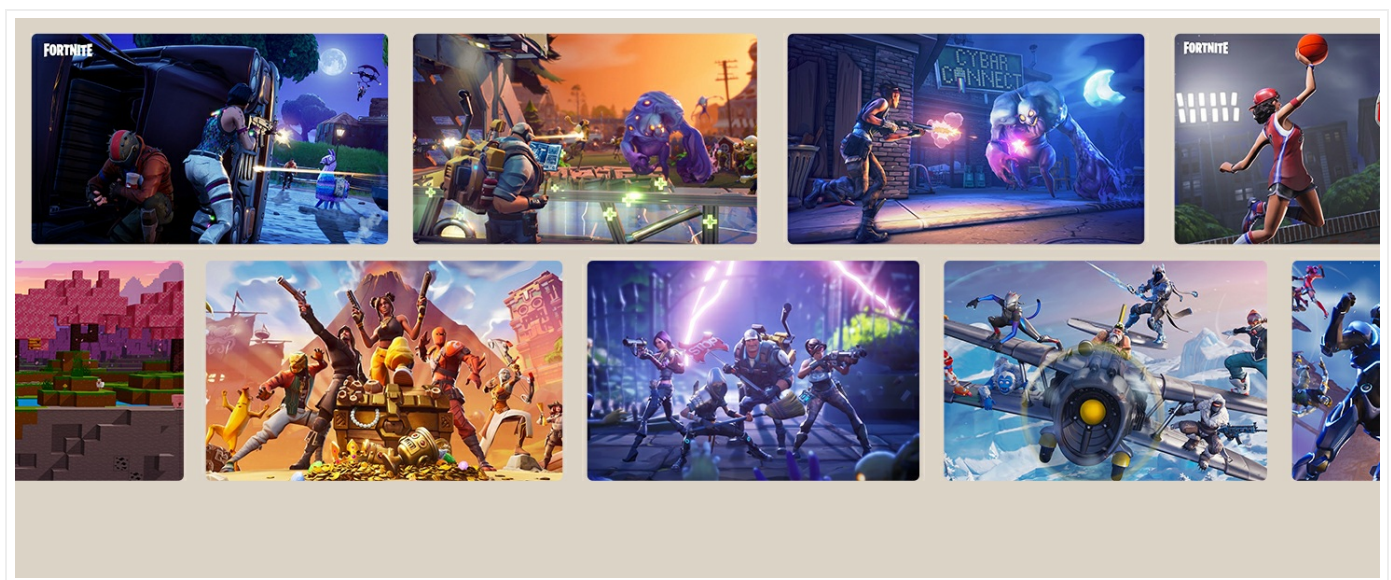


Image: Diagram showing the 32GB LPDDR5 RAM and 1TB PCIe 4.0 SSD for seamless multitasking and ample storage.

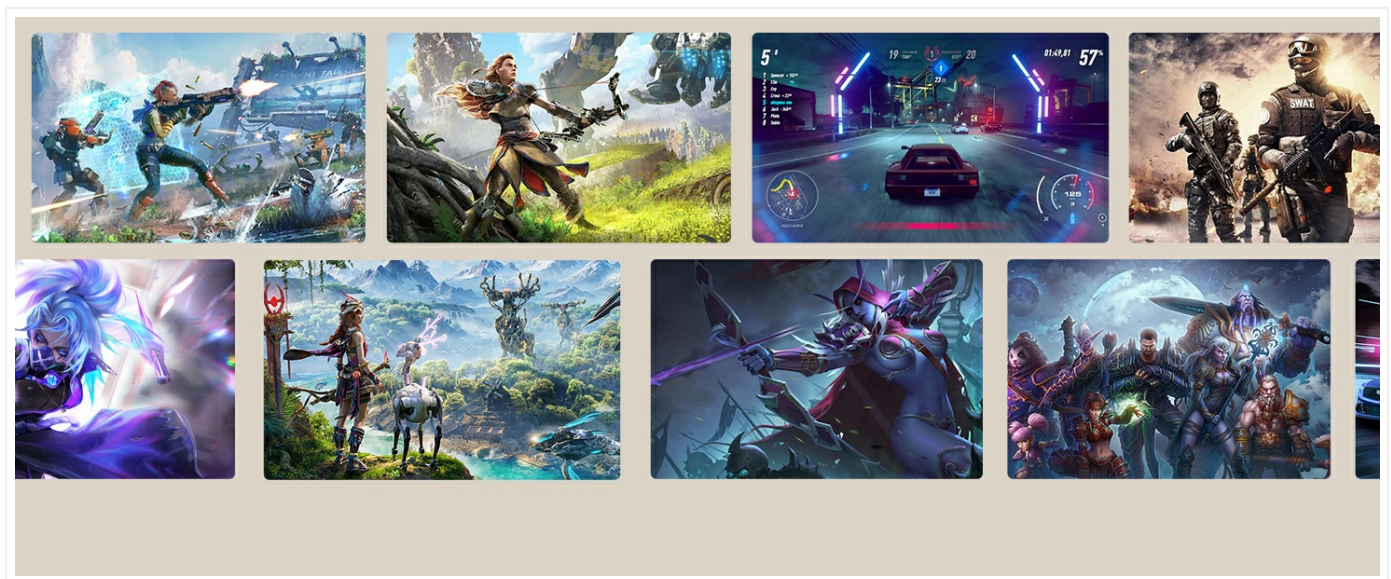


Image: The NIMO N15A laptop displaying a vibrant image on its 15.6-inch Full HD IPS screen.

## Ports and Connectivity:

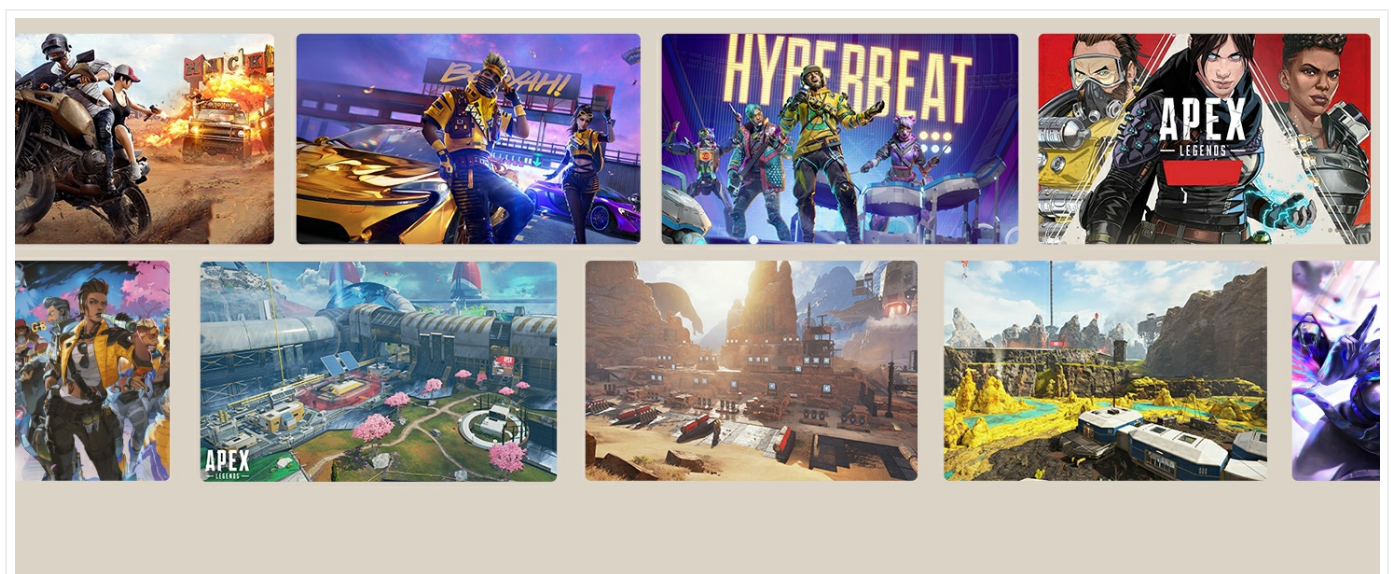


Image: Diagram illustrating the various ports on the NIMO N15A laptop, including USB, HDMI, and Type-C.



- Micro SD Reader
- USB 2.0 Port
- USB 3.2 Ports (multiple)
- Headphone Jack
- Kensington Lock Slot
- Type-C (Multifunction) Ports (supporting charging and data transfer)
- HDMI Port

## SETUP

---

### 1. Initial Charging and Power On:

1. Connect the provided 100W Type-C PD Fast Charger to the laptop's Type-C charging port and a power outlet.
2. Allow the laptop to charge for at least 30 minutes before initial use, or until the charging indicator shows sufficient battery.
3. Press the power button located on the keyboard to turn on the laptop.

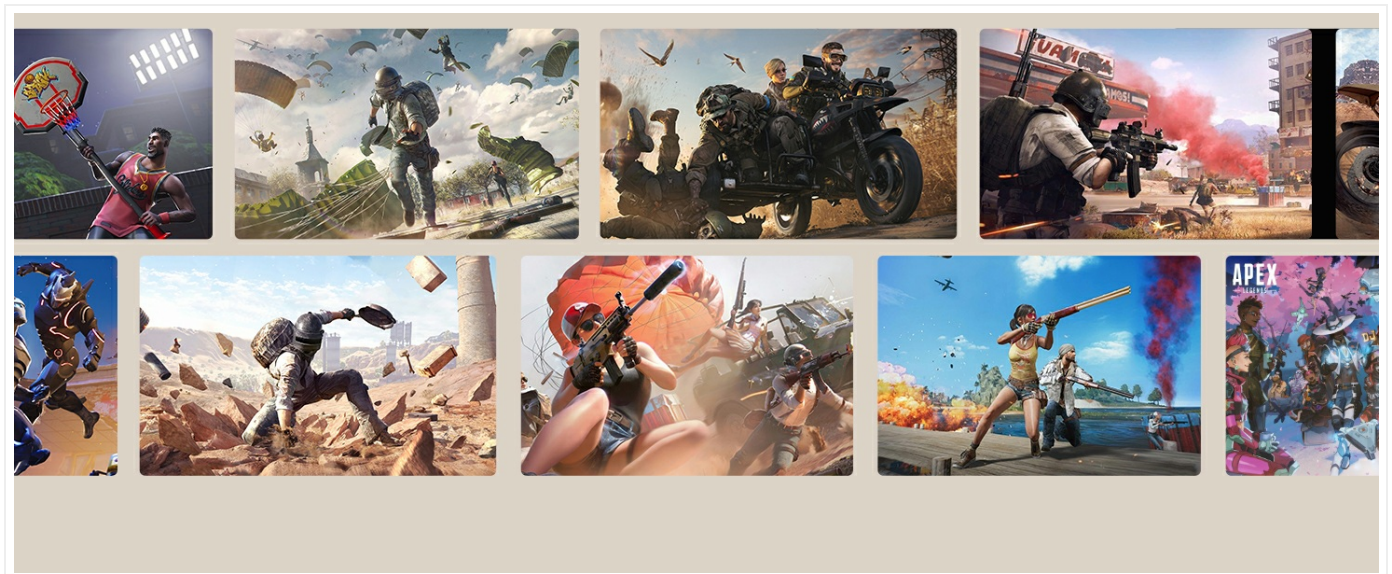


Image: Illustration of the NIMO N15A laptop being charged with the 100W Type-C PD Fast Charger.

### 2. Windows 11 Initial Setup:

Follow the on-screen prompts to complete the Windows 11 setup process. This typically includes:

- Selecting your region and keyboard layout.
- Connecting to a Wi-Fi network.
- Signing in with a Microsoft account or creating a local account.
- Setting up a PIN or password.
- Configuring privacy settings.

## OPERATING INSTRUCTIONS

---

### Power Management:

- **Power On:** Press the power button.
- **Sleep Mode:** Close the lid or press the power button briefly.

- **Shut Down:** Click the Start button, then Power, then Shut down.
- **Restart:** Click the Start button, then Power, then Restart.

## Keyboard and Touchpad:

# Backlit Keyboard and Fingerprint



Backlit



Webcam Shield



Fingerprint



Numeric Keypad

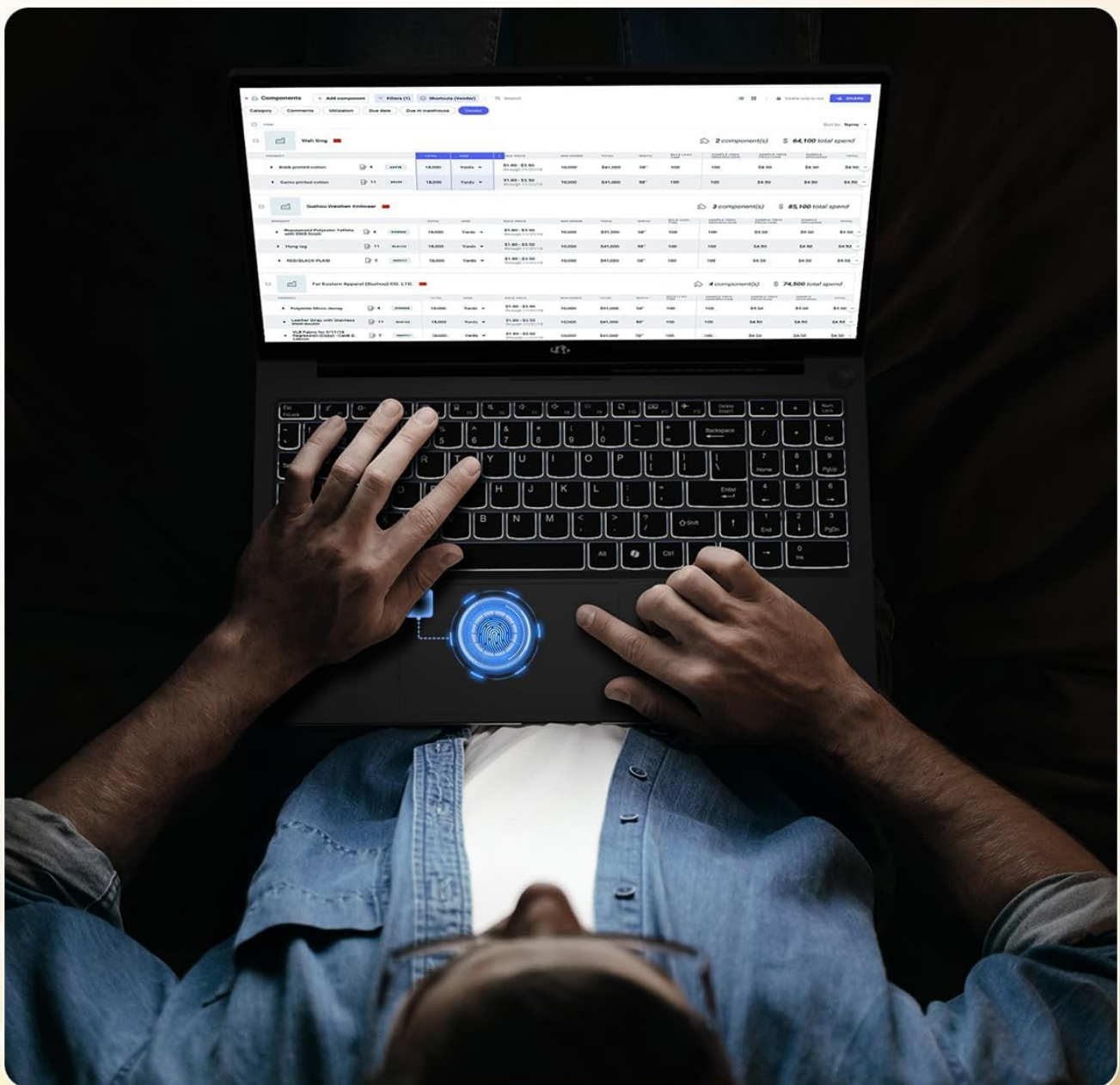


Image: Close-up view of the NIMO N15A laptop's backlit keyboard and the integrated fingerprint reader on the touchpad.

- **Backlit Keyboard:** Use the dedicated function key (usually Fn + Fx) to toggle the keyboard backlight on/off and adjust brightness levels.

- **Fingerprint Reader:** The fingerprint reader is integrated into the touchpad. During Windows setup, you can configure your fingerprint for secure, quick login.
- **Precision Touchpad:** Supports multi-touch gestures for navigation. Refer to Windows settings for customization.

## Connecting Peripherals:

Utilize the various ports to connect external devices such as monitors, printers, external storage, and audio devices.

- **USB Devices:** Plug USB devices into the available USB 2.0 or USB 3.2 ports.
- **External Display:** Connect an external monitor or TV using the HDMI port or a compatible Type-C adapter.
- **Audio:** Use the 3.5mm headphone jack for headphones or external speakers.

## Camera Privacy:



Image: Illustration of the NIMO N15A laptop's built-in privacy camera switch, allowing users to easily disable the webcam.

The NIMO N15A laptop features a built-in privacy camera switch. This allows you to physically disable the 2.0MP webcam when not in use, ensuring your privacy.

## MAINTENANCE

### Cleaning the Laptop:

- Power off the laptop and disconnect the charger before cleaning.
- Use a soft, lint-free cloth slightly dampened with water or a screen cleaner for the display.
- For the keyboard and chassis, use a soft cloth. Avoid harsh chemicals or abrasive materials.
- Use compressed air to clear dust from keyboard keys and vents.

### Battery Care:

- Avoid fully discharging the battery frequently.
- Store the laptop in a cool, dry place if not used for extended periods, with the battery charged to around 50-70%.
- Use only the original NIMO 100W Type-C PD Fast Charger.

### Software Updates:

- Regularly check for and install Windows updates to ensure system stability and security.
- Keep device drivers updated, especially for graphics and chipset, by checking the NIMO support website or



TROUBLESHOOTING

Problem	Possible Solution
Laptop does not power on.	Ensure the charger is properly connected and the power outlet is functional. Allow the battery to charge for at least 30 minutes. If the issue persists, contact support.
Display is blank or flickering.	Try connecting an external monitor to check if the issue is with the laptop's display. Adjust display brightness. Restart the laptop.
Slow performance.	Close unnecessary applications. Check for background processes consuming high resources. Ensure sufficient free storage space. Run a system scan for malware.
Keyboard backlight not working.	Press the dedicated function key combination (e.g., Fn + Fx) to toggle or adjust the backlight. Check keyboard settings in Windows.
Fingerprint reader not responding.	Ensure your finger is clean and dry. Re-register your fingerprint in Windows settings. Restart the laptop.

For issues not listed here or if solutions do not resolve the problem, please refer to the Warranty and Support section for assistance.

SPECIFICATIONS

Feature	Detail
Brand	NIMO
Model Name	NIMO N15AL (N15A)
Screen Size	15.6 Inches
Screen Resolution	1920 x 1080 pixels (Full HD)
Processor	AMD Ryzen 7 Pro 6850U (8 Cores, up to 4.7 GHz)
RAM	32 GB LPDDR5 (6400 MHz)
Hard Drive	1024 GB SSD (PCIe 4.0, Solid State)
Graphics Coprocessor	AMD Radeon 680M (Integrated)
Operating System	Windows 11
Wireless Type	802.11a/b/g/n/ac
USB 2.0 Ports	1
USB 3.0/3.2 Ports	4
Average Battery Life	9 Hours
Item Weight	3.75 pounds

Feature	Detail
Product Dimensions	14.07 x 8.98 x 0.76 inches
Color	Black
Rear Webcam Resolution	2 MP
Special Features	Backlit Keyboard, Fingerprint Reader, HD Audio, Numeric Keypad

## WARRANTY AND SUPPORT

NIMO provides comprehensive support for your laptop.

- **Warranty:** Your NIMO N15A laptop comes with a 2-year manufacturer's warranty.
- **Return Policy:** A 90-day hassle-free return policy is offered from the date of purchase.
- **Customer Support:** For technical assistance, warranty claims, or product-related inquiries, please contact NIMO customer support.

Contact information for support is typically available on the official NIMO website or through the product's packaging.

## SAFETY INFORMATION

**Important:** Read and follow these safety guidelines to prevent damage to your device or personal injury.


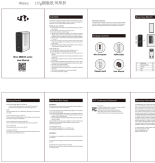



- Use only original chargers and regularly inspect cables for damage.
- Handle the laptop by its base and consider using a protective case. Avoid placing heavy objects on it.
- Place the laptop on a hard, flat surface to ensure proper ventilation and prevent overheating. Keep it away from extreme temperatures and moisture.
- Do not overcharge the battery. Discontinue use if the battery shows signs of swelling or damage.
- Set strong passwords, keep software updated, use antivirus software, and regularly back up your data.
- In case of liquid spills, immediately unplug the laptop and allow it to dry completely before attempting to power it on.
- For any issues, consult qualified professionals. Do not attempt to disassemble or repair the device yourself.

## LEGAL DISCLAIMER

This NIMO laptop is provided "as is," without express or implied warranties, except for any applicable manufacturer's limited warranty. Implied warranties of merchantability or fitness for a specific purpose are disclaimed. NIMO is not liable for damages resulting from misuse (e.g., non-approved chargers, unauthorized repairs), physical damage, or failure to adhere to safety guidelines, including data loss or business interruption. Users are responsible for regularly backing up their data. This disclaimer does not exclude liability for manufacturing defects or violations of mandatory local laws. By using this laptop, you accept these terms, which are governed by the laws of the applicable jurisdiction.





	<p><a href="#">NIMO N175 Series Laptop User Manual and Safety Information</a></p> <p>Official user manual and safety guide for the NIMO N175 series laptop. Provides detailed information on product features, setup, operation, maintenance, troubleshooting, warranty, and regulatory compliance.</p>
	<p><a href="#">Nimo MME2S Series Mini PC User Manual</a></p> <p>User manual for the Nimo MME2S series Mini PC, covering setup, operation, safety precautions, package contents, BIOS setup, FCC compliance, and warranty information.</p>
	<p><a href="#">NIMO N157 Series Laptop User Manual</a></p> <p>User manual for the NIMO N157 series laptop, covering product schematic, instructions for use, safety guidelines, troubleshooting, warranty information, and FCC/IC compliance.</p>
	<p><a href="#">NIMO N173 Series Notebook User Manual   Setup, Safety &amp; Troubleshooting Guide</a></p> <p>Comprehensive user manual for the NIMO N173 series notebook, covering product schematics, setup instructions, power supply, charging, cleaning, maintenance, safety guidelines, troubleshooting, and warranty information.</p>
	<p><a href="#">NIMO N171 Series Laptop User Manual and Safety Guide</a></p> <p>Comprehensive user manual for the NIMO N171 series laptop, covering product specifications, usage instructions, safety guidelines, troubleshooting, and warranty information.</p>
	<p><a href="#">NIMO N153 Series Laptop User Manual and Safety Guide</a></p> <p>This user manual provides comprehensive information for the NIMO N153 series laptop, including setup instructions, function key details, power supply and charging guidance, safety precautions, troubleshooting steps, warranty information, and FCC compliance statements.</p>