

Manuals+

[Q & A](#) | [Deep Search](#) | [Upload](#)

Manuals.plus /

› [KEDSUM](#) /

› KEDSUM 3-in-1 Multi-Use Folding Shopping Cart Instruction Manual

KEDSUM B0FPR6HBBC

KEDSUM 3-in-1 Multi-Use Folding Shopping Cart Instruction Manual

Model: B0FPR6HBBC

Brand: KEDSUM

1. INTRODUCTION

The KEDSUM 3-in-1 Multi-Use Folding Shopping Cart is designed for versatility and convenience, serving as a 60L shopping cart, grocery cart, or a hand truck capable of carrying up to 250 lbs. Its robust construction, featuring a thickened carbon steel frame and 7-inch solid rubber wheels, ensures durability and stable performance across various terrains. The cart also includes a removable waterproof bag and a 3-level telescoping handle for ease of use and compact storage.

KEDSUM FOLDING SHOPPING CART WITH 4 WHEELS

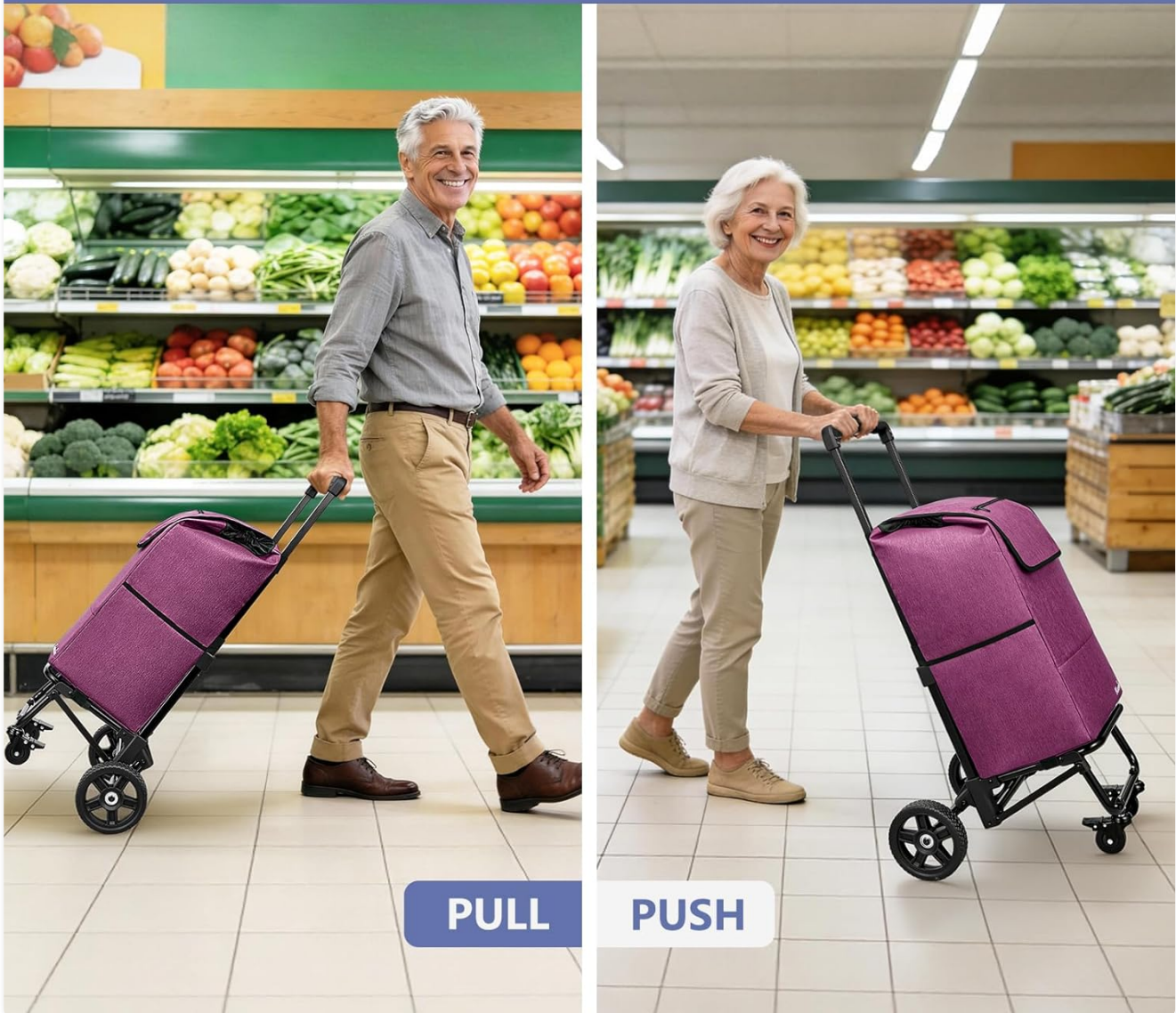


Image: The KEDSUM folding shopping cart being used in both pull and push configurations in a supermarket setting.

2. SAFETY INFORMATION

- Do not overload the cart beyond its maximum weight capacity of 250 lbs (113 kg).
- Ensure all bolts and connections are securely tightened before each use.
- Use the wheel brakes when parking the cart on uneven or sloped surfaces to prevent unintended rolling.
- Keep hands and fingers clear of moving parts during folding and unfolding.
- Avoid using the cart on stairs with heavy loads; utilize ramps or lift the cart carefully.
- Keep plastic packaging away from babies and children to avoid danger of suffocation. Do not use this bag in cribs, beds, carriages, or playpens. This bag is not a toy.

3. PACKAGE CONTENTS

Please check the package to ensure all components are present:

- Main Cart Frame (pre-assembled)
- 7-inch Solid Rubber Wheels (2 large)
- 360° Swivel Wheels with Brakes (2 small)
- Removable Waterproof Bag (1)
- Assembly Hardware (bolts, wrench)
- Instruction Manual

EASY INSTALLATION

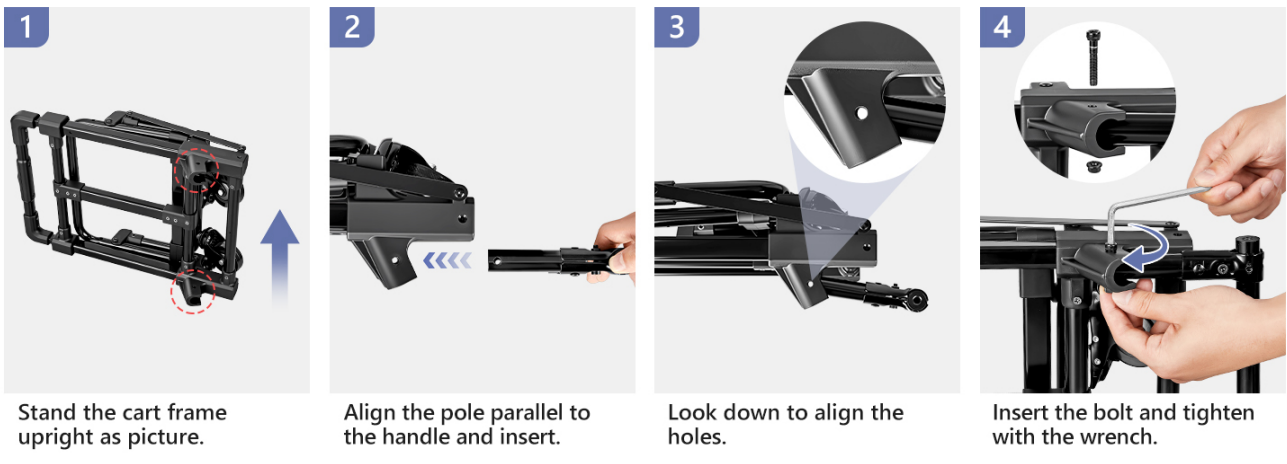


Image: Exploded view of cart components and assembly steps.

4. SETUP AND ASSEMBLY

Assembly is quick and straightforward, requiring no complex tools. The components connect securely to form a stable frame ready for immediate use.

1. **Unfold the Frame:** Stand the cart frame upright.
2. **Attach Rear Axle:** Align the rear axle pole parallel to the handle and insert it into the designated slots. Look down to align the holes.
3. **Secure Rear Axle:** Insert the provided M5 bolt and tighten it with the included wrench. Repeat for the other side.
4. **Install Wheels:** For the larger 7-inch wheels, insert the M8 bolt into the wheel and use the large wrench to fix it securely to the frame. For the smaller 360° swivel wheels, ensure the spring lock is engaged after installation.
5. **Attach Waterproof Bag:** Place the removable waterproof bag into the cart frame. Secure it using the Velcro straps provided on the bag and frame.

ALL-TERRAIN WHEELS WITH BRAKE



Brake



Thread Screwing



Double Ball Bearing

Image: Detailed view of wheel assembly and brake mechanism.

5. OPERATING INSTRUCTIONS

5.1. Loading the Cart

The cart features a spacious 60L capacity, providing ample room for groceries, water, laundry, and other essentials. The wide opening allows for easy loading and unloading. Even when filled, the frame remains upright and balanced. The built-in drawstring closure helps secure items while in motion, keeping contents safely contained during transport.

5.2. Maneuvering

The KEDSUM cart is designed as a push/pull dual-use model. The 360° swivel design of the front wheels allows for flexible turning and controlled maneuvering, making directional changes smoother when navigating through tight or crowded spaces. The 7-inch solid rubber wheels provide durability and enhanced traction, allowing the cart to move steadily across different surfaces while maintaining balance and control.



Image: Cart in use at a laundromat, on a street, and in a grocery store.

5.3. Using the Brakes

The swivel wheels include a manual brake system for added stability when parked. Engaging the brake helps prevent unwanted rolling, especially when positioned on uneven or sloped surfaces.

5.4. Navigating Different Terrains

The heavy-duty wheel system is built to handle outdoor environments, helping the cart perform reliably on varied terrain. The sturdy wheel construction supports steady movement when navigating ramps and gentle inclines without compromising stability. Even on rougher surfaces such as cobblestone or grass, the reinforced wheels help preserve stability and reduce vibration during movement.

6. MAINTENANCE

- **Cleaning the Bag:** The detachable waterproof bag is easy to remove and clean when necessary. Wipe with a damp cloth and mild detergent. Allow to air dry completely before reattaching.

- **Frame Care:** Wipe the carbon steel frame with a damp cloth to remove dirt and debris. Avoid abrasive cleaners that could damage the finish.
- **Wheel Inspection:** Periodically check the wheels for any debris, wear, or damage. Ensure all wheel bolts are tight.
- **Storage:** When not in use, fold the cart for compact storage to protect it from elements and prolong its lifespan.

7. FOLDING AND STORAGE

When not in use, the cart folds down quickly for compact storage. Its space-saving design allows it to fit easily into a car trunk, closet, or small storage area.

1. Remove the waterproof bag from the frame.
2. Locate the folding mechanisms on the frame (refer to diagram in package contents).
3. Follow the steps to collapse the frame into its compact folded size.
4. Secure any locking pins or straps to keep the cart in its folded position.



Image: Folding sequence of the KEDSUM shopping cart for compact storage.

8. SPECIFICATIONS

Feature	Detail
Product Dimensions (Unfolded)	19.7"D x 15.7"W x 39"H
Fold Size	22.4" x 15.7" x 7.8"
Brand	KEDSUM
Material	Carbon Steel (Frame), Nylon (Bag)
Color	Purple (as per current variant)

Feature	Detail
Special Features	Locking Caster, Sturdy, Telescoping Handle, Waterproof Bag
Recommended Uses	Indoor/Outdoor (Grocery, Laundry, Gardening, Camping)
Number of Wheels	4 (2 large, 2 swivel with brakes)
Weight Capacity Maximum	250 Pounds
Bag Capacity	60 Liters
Assembly Required	No (Minimal assembly for wheels/bag)

DIMENSION



Image: Dimensions of the KEDSUM shopping cart in both unfolded and folded states.

9. TROUBLESHOOTING

- **Wheels not rolling smoothly:** Check for debris (hair, string) caught in the wheel axles. Ensure bolts are not overtightened, allowing free rotation.
- **Cart feels unstable:** Verify that all frame connections are securely fastened. Ensure the load is evenly distributed within the bag and not exceeding the weight capacity.
- **Brakes not engaging:** Inspect the brake mechanism for any obstructions or damage. Ensure the brake lever is fully pushed down to engage.
- **Handle not extending/retracting:** Check for any obstructions in the telescoping mechanism. Ensure the release buttons are fully pressed when adjusting the handle height.

10. WARRANTY AND SUPPORT

For warranty information, product support, or to purchase replacement parts, please contact KEDSUM customer service. Refer to the contact information provided on the product packaging or the official KEDSUM website. Please retain your proof of purchase for any warranty claims.