

Klarus P2

Klarus P2 Tactical Pen Light User Manual

Model: P2

Brand: Klarus

1. INTRODUCTION

The Klarus P2 is a versatile tactical pen light designed for everyday carry (EDC) and various lighting needs. It features high lumen output, dual power options, and a durable, waterproof construction.



Figure 1: The Klarus P2 Tactical Pen Light shown with its retail packaging.

- **High Performance:** Delivers up to 1000 lumens with an 886-foot throw, utilizing an SFT-25R LED.
- **Dual Power Options:** Compatible with an included 1800mAh USB-C rechargeable battery or two standard AA batteries for emergency use.
- **Durable Design:** Crafted from aerospace-grade aluminum alloy, featuring IPX8 waterproof rating and 5ft (1.5m) drop resistance.
- **User-Friendly Interface:** Tactical tail switch for easy on/off and mode cycling with memory function.
- **Compact & Portable:** Lightweight (3.22oz) and pen-sized (5.66 inches long) with a two-way detachable clip for versatile carrying.

2. PACKAGE CONTENTS

Verify that all items are present in your Klarus P2 package:

- Klarus P2 Tactical Pen Light
- 1800mAh USB-C Rechargeable Battery (LiR 14100)
- USB-C Charging Cable
- Detachable Pocket Clip (pre-installed)
- Lanyard
- Spare O-rings
- User Manual



Figure 2: Klarus P2 package contents including the flashlight, battery, charging cable, clip, lanyard, spare O-rings, and user manual.

3. SETUP

3.1 Battery Installation

1. Unscrew the tailcap of the flashlight.
2. Insert the included 1800mAh Li-ion battery with the positive (+) end facing towards the head of the flashlight.
3. Alternatively, insert two AA alkaline or lithium-iron batteries with the positive (+) ends facing towards the head. Ensure total voltage does not exceed 3V when using AA batteries.
4. Screw the tailcap back on securely to ensure waterproof sealing.

Power-Packed 1800mAh Li-Ion Battery 20-Hour Run Time, USB-C Rechargeable

Runs on 14100 rechargeable Li-ion, 2x AA alkaline, or 2x AA lithium-iron batteries—swap power sources anytime, no more battery panic



Included

1800mAh
14100 Li-ion battery

Compatible with

2x AA alkaline batteries
2x AA lithium-iron batteries

*When using 2x AA batteries, ensure total voltage $\leq 3V$

Figure 3: The Klarus P2 supports both the included 1800mAh USB-C rechargeable Li-ion battery and two AA batteries. The Li-ion battery features a built-in USB-C charging port.

3.2 Battery Charging

The included 1800mAh Li-ion battery has a built-in USB-C charging port. To charge:

1. Remove the battery from the flashlight.
2. Connect the USB-C charging cable to the port on the battery.
3. Connect the other end of the cable to a USB power source.
4. The indicator light on the battery will show charging status (e.g., red for charging, green for fully charged).

Note: The flashlight itself does not have an integrated charging port. The battery must be removed for charging.

4. OPERATING INSTRUCTIONS

4.1 Tail Switch Operation

The Klarus P2 features a tactical tail switch for simple control:

- **Full Press:** Press the switch completely until it clicks to turn the flashlight ON or OFF.
- **Light Tap:** While the flashlight is ON, lightly tap the switch (without a full click) to cycle through the brightness modes (Low → Medium → High).
- **Memory Function:** The flashlight will remember the last used brightness mode when turned off and will activate in that mode when turned back on.

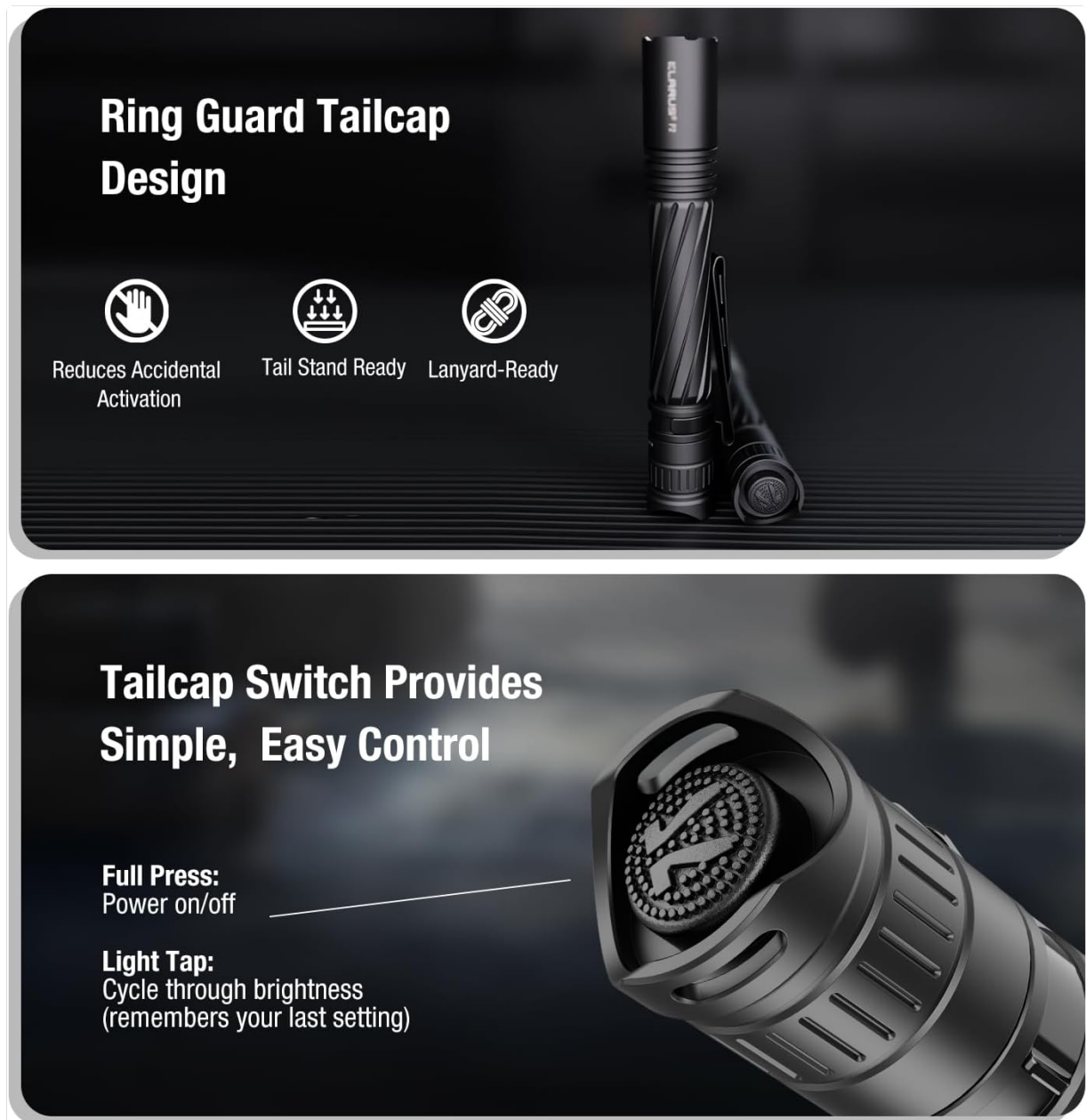


Figure 4: The tailcap features a grooved design for anti-accidental activation, tail-standing, and lanyard attachment. The single tail switch controls power and brightness modes.

4.2 Brightness Modes

The P2 offers three brightness levels:

- **Low:** Suitable for close-range tasks and extended runtime.
- **Medium:** Balanced output for general use.
- **High:** Maximum output for long-distance illumination and emergencies.

4.3 Carrying and Usage

The Klarus P2 is designed for versatile carry and use:

- **Pocket Clip:** The two-way detachable clip allows secure attachment to pockets, belts, backpack

straps, or hat brims for hands-free lighting.

- **Lanyard:** Attach the included lanyard to the tailcap for added security and easy retrieval.
- **Tail-Standing:** The grooved tailcap design enables the flashlight to stand upright, providing ambient lighting.



Figure 5: The two-way detachable clip offers flexible attachment options to backpacks, pockets, or hat brims, allowing for hands-free operation.

High Performance in an Ultra-Compact Design

Crafted from full aviation-grade aluminum, the P2 features a novel tornado pattern grip for slip resistance that blends sharp looks with a perfect hold



Figure 6: The Klarus P2's ultra-compact design, similar in size to a regular ballpoint pen, makes it highly portable for everyday carry.

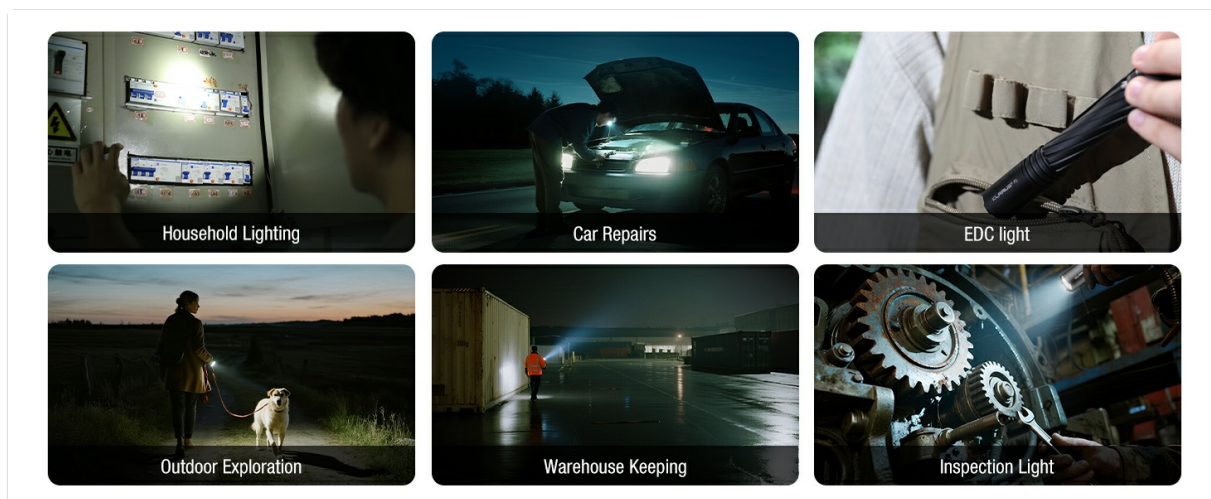


Figure 7: The Klarus P2 is suitable for various applications including household lighting, car repairs, outdoor exploration, warehouse keeping, and inspection tasks.

4.4 Product Video

Watch the official product video for a demonstration of the Klarus P2's features and operation:

Your browser does not support the video tag.

Video 1: Official demonstration of the Klarus P2 Powerful Pen Light, showcasing its features and performance.

5. MAINTENANCE

- **Cleaning:** Clean the flashlight body with a soft, damp cloth. Do not use harsh chemicals or abrasives.
- **Lubrication:** Periodically lubricate the O-rings and threads with silicone grease to maintain waterproof integrity.
- **O-ring Replacement:** If O-rings are damaged or worn, replace them with the provided spare O-rings to ensure IPX8 waterproof performance.
- **Battery Care:** Store the rechargeable battery in a cool, dry place when not in use. If using AA batteries, remove them during prolonged storage to prevent leakage.



Figure 8: The Klarus P2 features an IPX8 waterproof rating and 5ft (1.5m) drop resistance, built with aerospace aluminum for durability.

6. TROUBLESHOOTING

- **Flashlight not turning on:**

- Ensure the battery is correctly inserted with the positive (+) end facing the head.
- Check if the battery is charged. Recharge the Li-ion battery or replace AA batteries.
- Tighten the tailcap securely.

- **Intermittent operation:**

- Clean the battery contacts and threads with a clean cloth.
- Ensure the tailcap is fully tightened.
- Check battery charge level.

- **Reduced brightness or throw:**

- The battery may be low. Recharge or replace.
- The lens may be dirty. Clean gently with a soft cloth.

7. SPECIFICATIONS







Feature	Detail
Model	P2
Light Output (Max)	1000 Lumens
Beam Distance (Max)	886 feet (270 meters)
Power Source	1800mAh USB-C Rechargeable Li-ion Battery (included) or 2x AA Batteries
Runtime (Max)	20 hours (with 1800mAh battery)
Light Source Type	SFT-25R LED
Material	Aerospace-grade Aluminum Alloy
Water Resistance Level	IPX8 (Waterproof)
Drop Resistance	5ft (1.5 meters)
Product Dimensions	5.66"D x 0.8"W x 0.8"H (143.8mm x 20.7mm x 20.7mm)
Item Weight	3.22 oz (91.3g)
Special Features	High Lumen, Dual Power Options, Mil-Spec Tough, Tactical Tail Switch, Year-Long Standby

8. WARRANTY & SUPPORT

The Klarus P2 Tactical Pen Light is backed by an industry-leading **5-year worry-free warranty**.

For any product inquiries, technical support, or warranty claims, please contact Klarus customer service through their official website or your point of purchase.

Related Documents - P2

	<p>Klarus E5 Compact LED Flashlight: User Manual & Specifications</p> <p>Explore the Klarus E5, a powerful 470-lumen LED flashlight featuring a magnetic base, USB-C charging, and IPX4 water resistance. This guide covers specifications, operation, and safety.</p>
	<p>KLARUS GL4 Tactical Flashlight User Manual and Specifications</p> <p>Detailed user manual and specifications for the KLARUS GL4 tactical flashlight, including operation modes, installation, maintenance, and warranty information.</p>
	<p>KLARUS XT11GT Pro Tactical Flashlight User Manual - Specifications and Operation</p> <p>Comprehensive user manual for the KLARUS XT11GT Pro tactical flashlight, detailing specifications, package contents, operation modes, battery information, warranty, and maintenance.</p>
	<p>KLARUS E5 EDC Tool-Light with Magnetic Base: Features and Specifications</p> <p>Discover the KLARUS E5 EDC Tool-Light, a compact and powerful flashlight featuring dual COB light sources, magnetic base, 470 lumens output, IPX4 water resistance, and 12-hour runtime. Ideal for outdoor and everyday carry.</p>
	<p>Klarus EP11 Tactical Flashlight User Manual Features, Operations, and Warranty</p> <p>Comprehensive user manual for the Klarus EP11 tactical flashlight. Learn about its features, specifications, operations, battery installation, charging, maintenance, and warranty information.</p>
	<p>KLARUS XT21X PRO Flashlight User Manual</p> <p>Comprehensive user manual for the KLARUS XT21X PRO tactical flashlight, detailing its advanced features, operation modes, specifications, charging, and safety guidelines.</p>