

Manuals+

[Q & A](#) | [Deep Search](#) | [Upload](#)

manuals.plus /

- › [Ninja](#) /
- › [Ninja Crispi Pro 6-in-1 Glass Air Fryer Instruction Manual | Model AS101LG](#)

Ninja AS101LG

Ninja Crispi Pro 6-in-1 Glass Air Fryer Instruction Manual

Model: AS101LG | Brand: Ninja

INTRODUCTION

The Ninja Crispi® Pro Glass Countertop Air Fryer is an 1800-watt adjustable air fryer designed for versatile cooking. It features 6 customizable functions and precise temperature control to achieve optimal results. This appliance includes 6-quart and 2.5-quart CleanCrisp™ Glassware, with a modular base that adapts to various glassware sizes, including optional 4-quart containers. The thermal shock-resistant glass is suitable for non-toxic cooking and storing, making it a durable and convenient addition to any kitchen.



Image: The Ninja Crispi Pro Air Fryer in use, showcasing a whole roasted chicken in the 6-quart glass container and roasted brussels sprouts in the 2.5-quart glass container.

SETUP

What's in the Box

Upon unboxing, ensure all components are present and undamaged. The package includes:

- Ninja Crispi Pro Glass Countertop Air Fryer (Main Unit)
- 6-quart CleanCrisp Glassware
- 2.5-quart CleanCrisp Glassware
- Removable modular base
- 2 crisper plates
- 2 storage lids
- Chef-inspired recipe book



Get more out of your air fryer

Ninja Crispi® Pro Countertop Glass Air Fryer includes 6-qt CleanCrisp™ Glassware, 2.5-qt CleanCrisp™ Glassware, removable modular base, storage lids, and crisper plates.

Image: All included components of the Ninja Crispi Pro Air Fryer, including the main unit, 6-quart and 2.5-quart glassware, storage lids, crisper plates, and modular base.

Initial Assembly

1. Place the main unit on a stable, heat-resistant countertop.
2. Insert the removable modular base into the main unit. Ensure it clicks securely into place.
3. Select the appropriate CleanCrisp Glassware (2.5-quart or 6-quart) for your cooking needs.
4. Place a crisper plate inside the chosen glassware.
5. Insert the assembled glassware into the modular base. Ensure it is properly seated.



Adjustable base

Adjusts to fit 2.5-qt, 4-qt*, or 6-qt CleanCrisp™ Glassware for everyday or family-sized meals.

*4-QT CLEANCRISP GLASSWARE SOLD SEPARATELY

Image: A user adjusting the modular base of the Ninja Crispi Pro Air Fryer to accommodate different glassware sizes.

OPERATING INSTRUCTIONS

Control Panel

The control panel features an intuitive display and buttons for easy operation:

- **Power Button:** Turns the unit on/off.
- **Temperature Control:** Adjust cooking temperature (up to 450°F).
- **Time Control:** Set cooking duration.
- **Mode Button:** Select from 6 customizable functions: Max Crisp, Air Fry, Bake/Proof, Roast, Recrisp, and Dehydrate.
- **Light Button:** Illuminates the cooking chamber for visibility.

Precision temp control

Cook accurately and consistently with precise temperature control for perfect results every time.

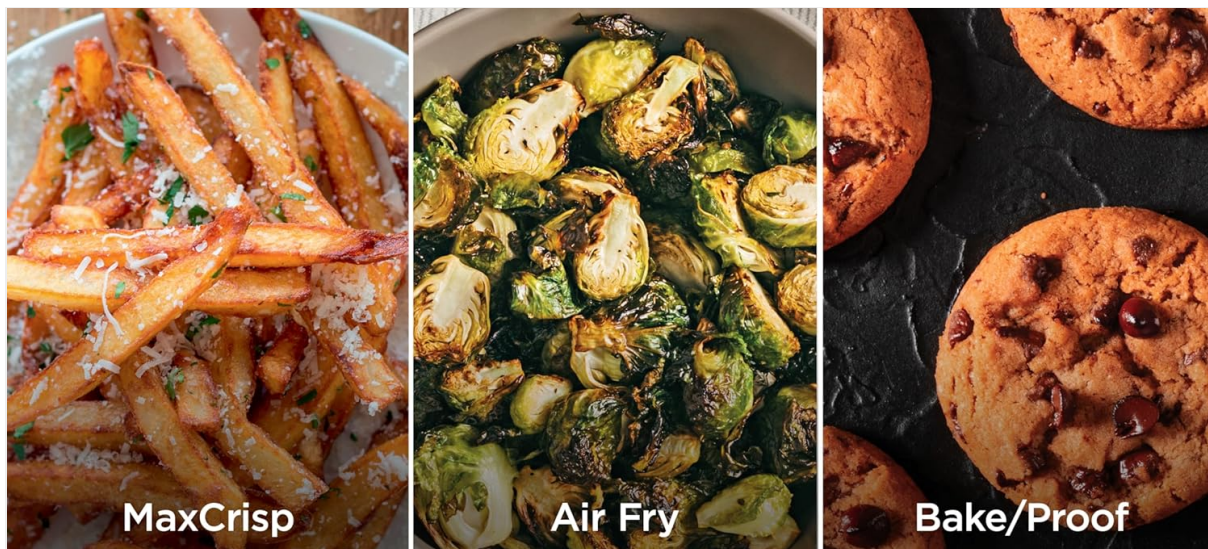


Image: A close-up view of the Ninja Crispi Pro Air Fryer's digital control panel, highlighting the temperature and time adjustment features.

6-in-1 Cooking Functions

The Ninja Crispi Pro offers six versatile cooking functions:

- **Max Crisp:** High-temperature quick crisp, ideal for frozen foods.
- **Air Fry:** Crisps food with little to no oil.
- **Bake/Proof:** Gentle heat for baked treats or proofing dough.
- **Roast:** Caramelizes outside, tender inside, perfect for large proteins and vegetables.
- **Recrisp:** Revives leftovers with an even, crispy texture.
- **Dehydrate:** Removes moisture from fresh ingredients for chips and jerky.



6-in-1 Functionality

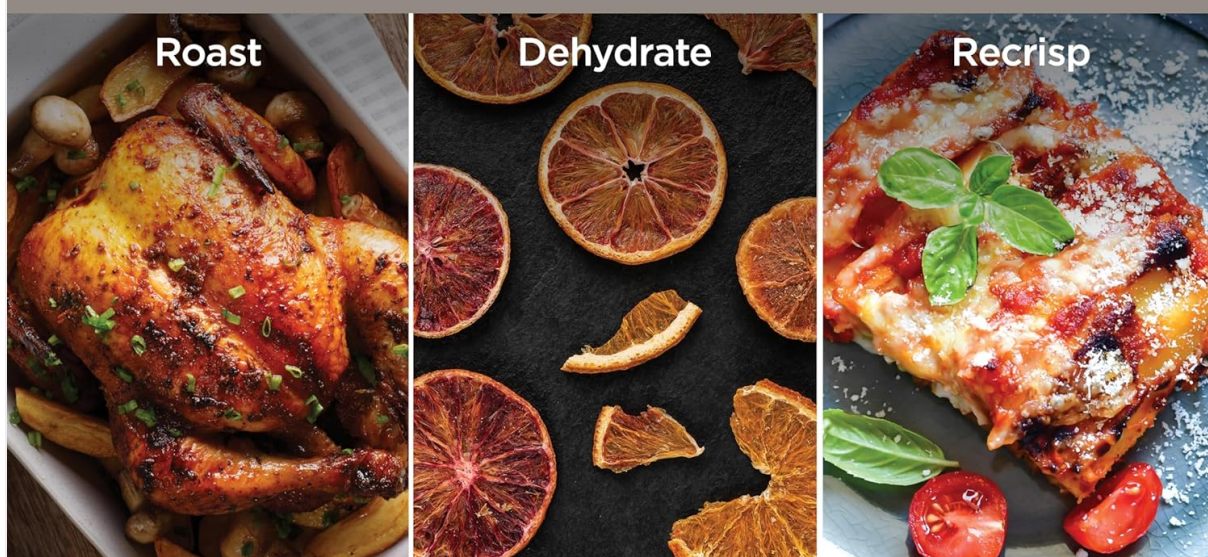


Image: A visual representation of the Ninja Crispi Pro's 6-in-1 functionality, showing Max Crisp fries, Air Fry brussels sprouts, Bake/Proof cookies, Roast chicken, Dehydrate orange slices, and Re crisp pizza.

Using the Glassware

The CleanCrisp Glassware is designed for convenience and safety:

- **Versatile Capacity:** The modular base adjusts to fit 2.5-quart, 4-quart (sold separately), and 6-quart CleanCrisp Glassware, allowing for meals of various sizes.
- **Non-Toxic & Durable:** Made from thermal shock-resistant glass, it's designed for non-toxic cooking and storing (no PFAS, no PTFE). It can go from frozen to crispy in minutes.
- **Fixed Heat Protection:** Permanently fixed heat-safe feet allow you to safely place the hot glassware directly on granite, laminate, quartz, butcher block, and marble countertops.
- **Leakproof Storage Lids:** Snap-lock lids are included to keep meals fresh and prevent spills, ideal for meal prepping or storing leftovers.



Family-sized capacity

6-qt CleanCrisp™ Container fits up to a 7.5-lb chicken and can feed up to 10 people.

Image: The Ninja Crispi Pro Air Fryer with a whole roasted chicken and vegetables in the 6-quart CleanCrisp Glassware, demonstrating its family-sized capacity.



Thermal shock resistant

Go from frozen to crispy in minutes.

Image: A split image illustrating the thermal shock resistance of the CleanCrisp Glassware, transitioning from frozen chicken wings to crispy cooked wings.

CleanCrisp™ Glassware

DESIGNED FOR

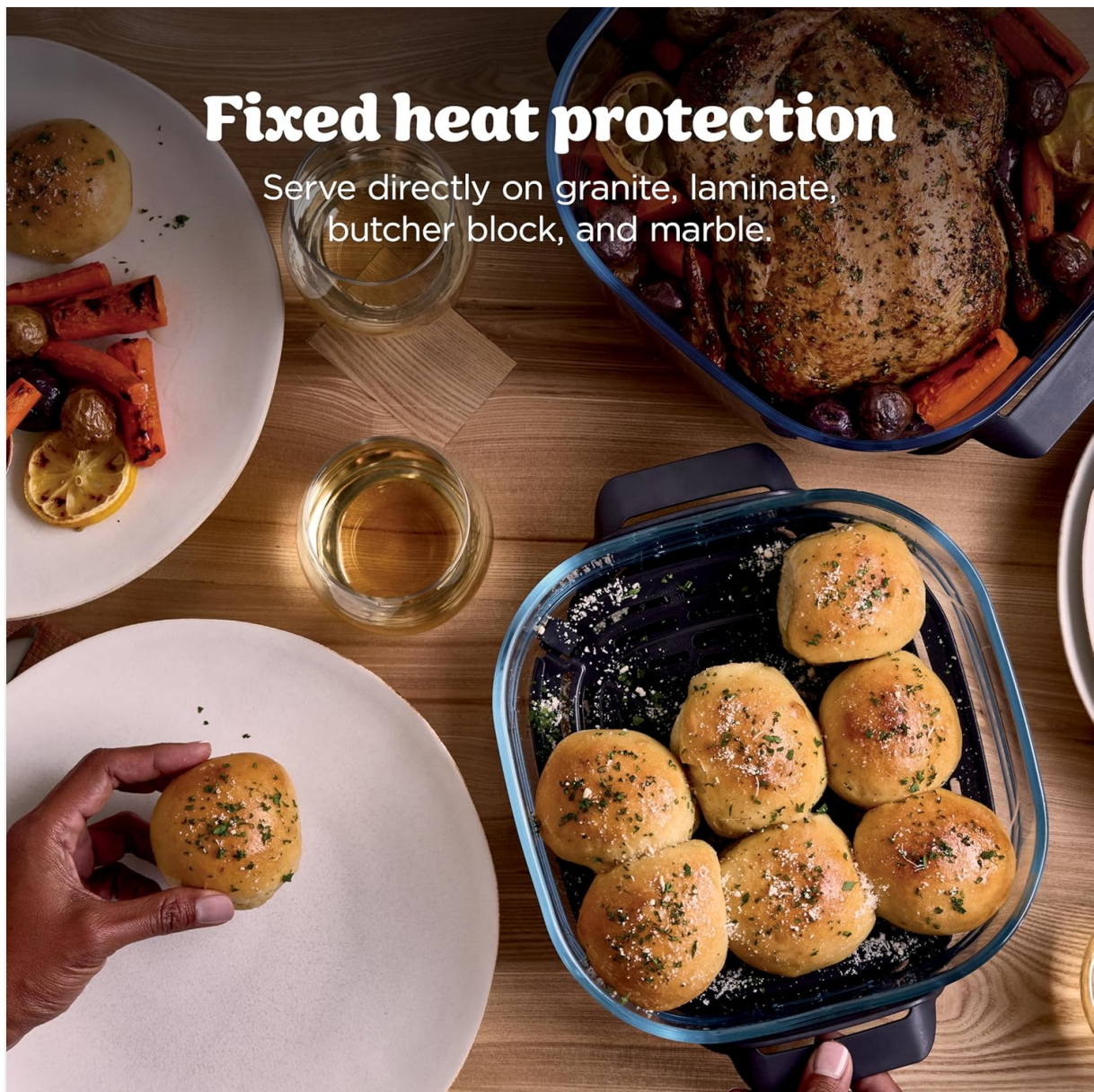
NONTOXIC Cooking & Storing

NO PFAS | NO PTFE



*4-QT CLEANCRISP GLASSWARE SOLD SEPARATELY

Image: An arrangement of 2.5-quart, 4-quart, and 6-quart CleanCrisp Glassware, each containing different foods, highlighting the non-toxic and PFAS-free cooking surface.



Fixed heat protection

Serve directly on granite, laminate, butcher block, and marble.

Image: Cooked garlic knots and roasted chicken in CleanCrisp Glassware placed directly on various countertop materials, illustrating the fixed heat protection feature.

Cooking Process Overview

The general steps for cooking with your Ninja Crispi Pro are:

1. **Prep:** Prepare fresh or frozen ingredients directly in the CleanCrisp Glassware.
2. **Cook:** Insert the glassware into the unit, select your desired function, temperature, and time using the control panel.
3. **Serve:** Use the easy-grip handles to serve directly from the CleanCrisp Glassware.
4. **Store:** Attach the BPA-free, dishwasher-safe lids to store leftovers in the same container.
5. **Recrisp:** Revive your leftovers with a crunchy crisp using the Recrisp function.



Prep it



Cook it



Serve it



Store it



Recrisp it

Image: A visual guide demonstrating the versatility of the Ninja Crispi Pro, showing how to prep ingredients, cook using the unit, serve directly from the glassware, store with lids, and recrisp leftovers.

Official Product Video

Your browser does not support the video tag.

Video: An official review of the Ninja Crispi Pro 6-in-1 Glass Countertop Air Fryer, demonstrating its features and cooking capabilities.

MAINTENANCE & CLEANING

Proper maintenance ensures the longevity and optimal performance of your Ninja Crispi Pro.

Cleaning

- **CleanCrisp Glassware, Crisper Plates, and Lids:** All glassware, crisper plates, and storage lids are dishwasher safe for easy cleanup.
- **Main Unit:** Wipe the exterior of the main unit with a damp cloth. Do not immerse the main unit in water.
- **Modular Base:** The removable modular base can be wiped clean with a damp cloth.



Easy to clean

CleanCrisp™ Glassware, crisper plates, and lids are dishwasher safe.

Image: CleanCrisp Glassware, crisper plates, and lids being placed into a dishwasher, illustrating their dishwasher-safe design.

TROUBLESHOOTING

If you encounter any issues with your Ninja Crispi Pro, refer to the following general troubleshooting tips:

- **Unit Not Turning On:** Ensure the power cord is securely plugged into a working outlet. Check if the glassware is correctly seated in the modular base.
- **Food Not Cooking Evenly:** Ensure food is spread in a single layer on the crisper plate. Shake or toss ingredients midway through cooking for best results.
- **Smoke/Odor:** A small amount of smoke or odor may occur during initial use. If excessive, ensure the unit and accessories are clean and free of food debris.
- **Error Messages:** If an error message appears on the display, consult the detailed user manual for specific codes and solutions.

SPECIFICATIONS

Feature	Detail
Model Name	Crispi Pro

Feature	Detail
Model Number	AS101LG
Brand	Ninja
Capacity	6 Quarts (main), 2.5 Quarts (secondary)
Output Wattage	1800 Watts
Voltage	120 Volts
Max Temperature	450 Degrees Fahrenheit
Control Method	Push Button
Special Feature	Automatic Shut-Off
Material	Metal (unit), Glass (containers)
Product Dimensions	11.8"D x 12.2"W x 11"H
Item Weight	11.4 Pounds
Dishwasher Safe	Yes (Glassware, crisper plates, lids)
Nonstick Coating	No
UPC	622356705547

WARRANTY & SUPPORT

For warranty information, product registration, and customer support, please refer to the documentation included with your Ninja Crispi Pro Air Fryer or visit the official Ninja website. Keep your purchase receipt for warranty claims.