

Shelly Shelly 1 Gen4

Shelly 1 Gen4 Smart Relay Switch User Manual

Model: Shelly 1 Gen4 (3800238070687)

Brand: Shelly



1. INTRODUCTION

The Shelly 1 Gen4 is a versatile smart relay switch designed for home and office automation. It features dry contacts and a single 16A channel, allowing for remote control of various appliances and equipment. This device supports Wi-Fi, Zigbee, and Matter protocols, and can function as a Bluetooth gateway for enhanced connectivity. Its compact design facilitates easy installation into standard electrical wall boxes, power sockets, and light switches.

Key features include:

- **Multi-protocol Support:** Wi-Fi, Zigbee, and Matter certified for broad compatibility.
- **Dry Contacts:** Provides potential-free contacts for flexible control of various loads.
- **High Current Capacity:** Supports up to 16A at 240VAC and 10A at 30VDC.
- **Compact Design:** Fits into most standard electrical installations.
- **Bluetooth Gateway:** Enhances connectivity for other Shelly BLU devices.
- **Smart Home Integration:** Compatible with Alexa, Google Home, Apple HomeKit, and SmartThings.



Image 1.1: Shelly 1 Gen4 Smart Relay Switch with its packaging.

2. SAFETY INFORMATION

WARNING: Electrical work should only be performed by qualified personnel. Always disconnect power before installation, maintenance, or troubleshooting. Failure to follow these instructions can result in electric shock, fire, or serious injury.

- Ensure the device is installed in accordance with local electrical codes and regulations.
- Do not expose the device to water or excessive humidity.
- Do not exceed the maximum load specified for the device (16A).
- Use only with compatible power sources and loads.
- Keep out of reach of children.

3. PACKAGE CONTENTS

Your Shelly 1 Gen4 package should contain the following items:

- 1 x Shelly 1 Gen4 Smart Relay Switch
- 1 x User Manual (this document)

4. DEVICE OVERVIEW AND DIMENSIONS

The Shelly 1 Gen4 is designed to be compact for easy integration. Below are its physical dimensions and a diagram of its terminals.



Image 4.1: Shelly 1 Gen4 showing dimensions (1.65 in x 1.46 in) and wireless connectivity ranges for Zigbee, Wi-Fi, and Bluetooth. The device features terminals for Line (L), Neutral (N), Input (I), Output (O), and Switch (SW). It also includes dedicated terminals for 12V DC and 24-48V DC power supply options, alongside the standard 110-240V AC input.

5. INSTALLATION AND SETUP

5.1. Wiring Instructions

The Shelly 1 Gen4 can be retrofitted behind existing wall switches or outlets. Ensure power is disconnected before proceeding.



EASY TO INSTALL

Retrofit Shelly 1 Gen4 behind any existing wall switch or outlet in less than 10 minutes and control it remotely through Shelly Smart Control app or your home automation system.

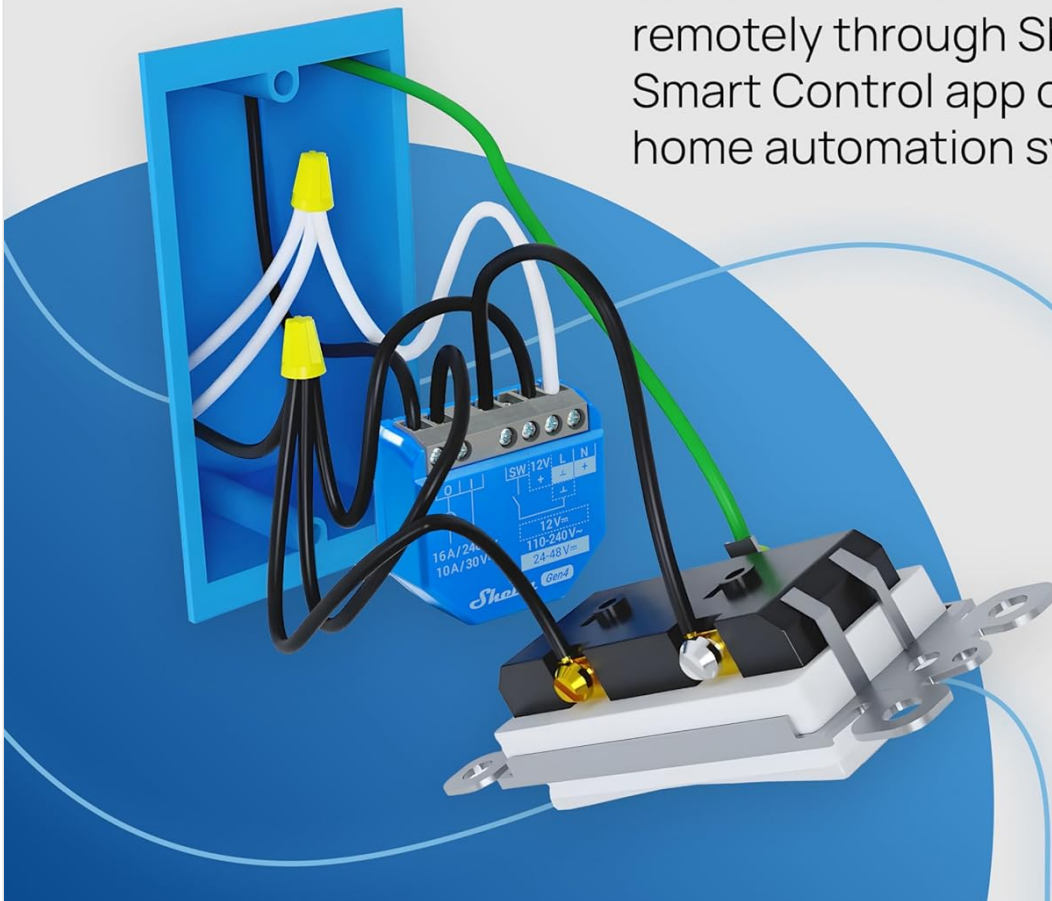


Image 5.1: Example wiring diagram for installing Shelly 1 Gen4 behind a standard wall switch.

Typical Wiring (AC Load):

1. Connect the Line (L) wire from your electrical supply to the 'L' terminal on the Shelly 1 Gen4.
2. Connect the Neutral (N) wire from your electrical supply to the 'N' terminal on the Shelly 1 Gen4.
3. Connect the load (e.g., light fixture) to the 'O' (Output) terminal.
4. Connect the other side of the load to the Neutral (N) wire of your electrical supply.
5. For manual control, connect a wall switch between the 'SW' (Switch) terminal and the 'I' (Input) terminal. The 'I' terminal should also be connected to the Line (L) wire.

Dry Contact Wiring (Low Voltage Load):

For controlling low-voltage devices (e.g., garage door openers, irrigation valves), use the dry contacts. The Shelly 1 Gen4 can be powered by 12V DC or 24-48V DC. Refer to the device label for specific voltage requirements.

1. Power the Shelly 1 Gen4 using the appropriate DC terminals (12V or 24-48V).
2. Connect the control wires of your low-voltage device to the 'I' (Input) and 'O' (Output) terminals. These terminals act as a potential-free switch.

3. Optionally, connect a manual switch to the 'SW' terminal for local control.

5.2. Device Inclusion (Pairing)

The Shelly 1 Gen4 supports Wi-Fi, Zigbee, and Matter for inclusion into your smart home system.

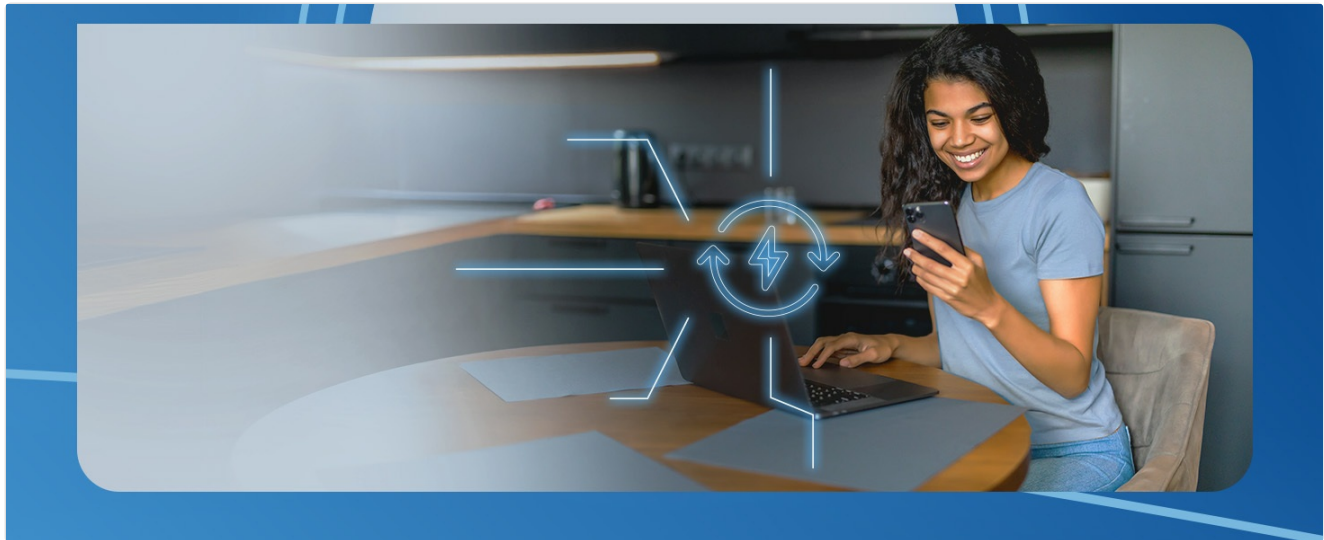


Image 5.2: Visual guide for the Shelly 1 Gen4 inclusion process using the Shelly App or QR code for Matter.

- **Wi-Fi/Bluetooth Inclusion:** Download the Shelly Smart Control App. Connect to the Shelly device via Wi-Fi or Bluetooth as prompted by the app. Follow the in-app instructions to add the device to your network.
- **Zigbee Inclusion:** To pair with a Zigbee network, press the reset button on the device 5 consecutive times. The device will enter pairing mode.
- **Matter Inclusion:** Scan the QR code located on the device or its packaging using a Matter-compatible hub or application to include it into your Matter ecosystem.

6. OPERATING INSTRUCTIONS

Once installed and connected, the Shelly 1 Gen4 offers multiple ways to control your connected devices.

6.1. Shelly Smart Control App

The Shelly Smart Control App (available for iOS and Android) provides comprehensive control and management of your Shelly devices. You can:

- Turn devices on/off remotely from anywhere.
- Create custom schedules for automated operation (e.g., lights on at sunset).
- Set up scenes to trigger multiple actions with a single command.
- Monitor device status and energy consumption (if applicable).
- Receive notifications for automated events.

Shelly

CONTROL LIGHTS, GARAGE DOORS, AND MORE...

Ideal for 12V DC and 24-48V DC setups, Shelly 1 Gen4 works seamlessly for garage door management, as well as for lighting control through preset schedules.



Image 6.1: The Shelly Smart Control App interface demonstrating scene management and device control.

6.2. Voice Control

The Shelly 1 Gen4 is compatible with popular voice assistants, allowing for hands-free control:

- **Amazon Alexa:** "Alexa, turn on the living room light."
- **Google Home:** "Hey Google, open the garage door."
- **Apple HomeKit:** "Hey Siri, turn off the fan."

Shelly

CONTROL LIGHTS, GARAGE DOORS, AND MORE...

Ideal for 12V DC and 24-48V DC setups, Shelly 1 Gen4 works seamlessly for garage door management, as well as for lighting control through preset schedules.

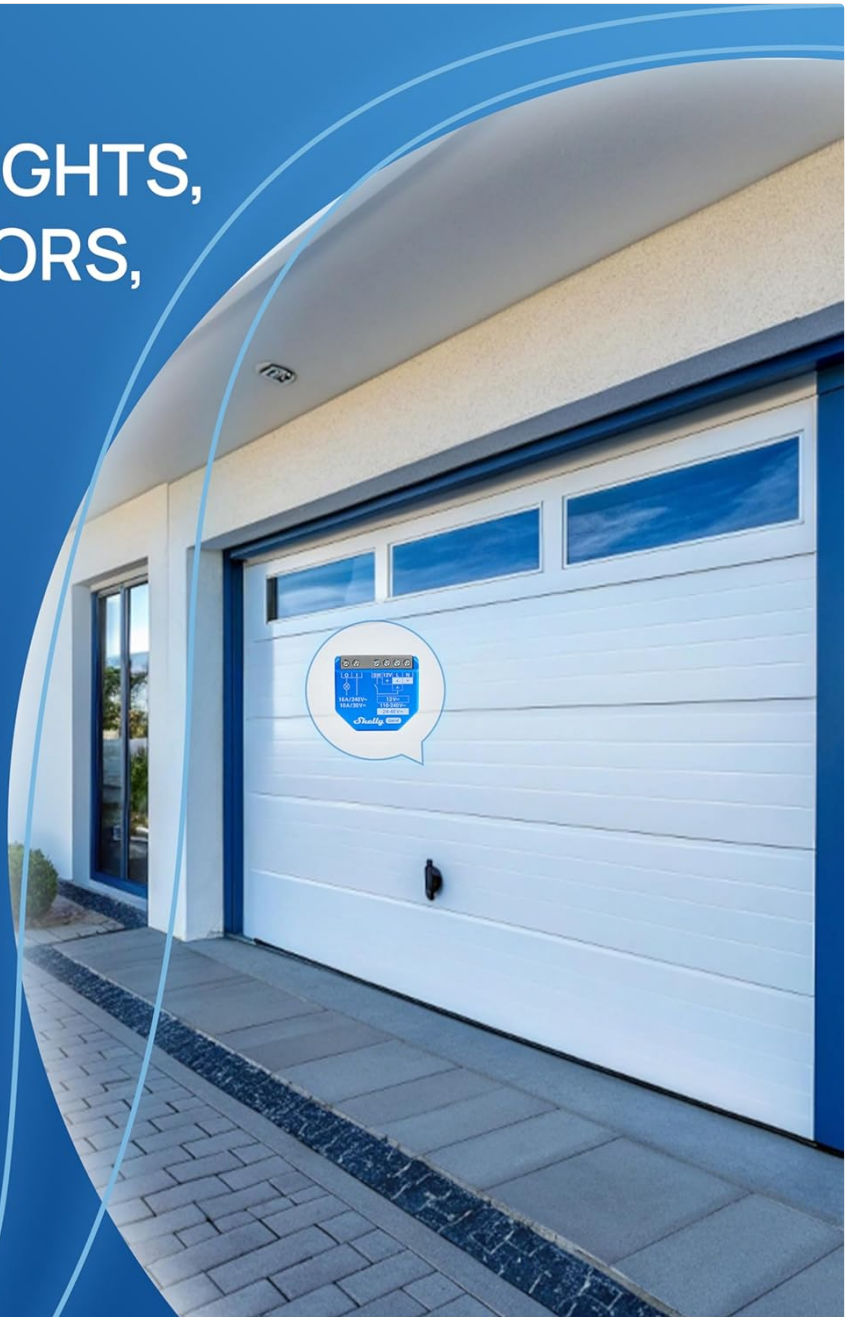


Image 6.2: Shelly 1 Gen4 supports integration with major smart home platforms for voice control and automation.

6.3. Specific Applications

The Shelly 1 Gen4 is ideal for various applications, including:

- **Lighting Control:** Automate lights to turn on/off based on schedules or events.
- **Garage Door Control:** Remotely open and close your garage door. Can be paired with a Reed switch and Shelly Plus Add-on for real-time status monitoring.
- **Appliance Control:** Turn on/off other home appliances.



VOICE COMMAND AND SHELLY SMART CONTROL APP



Works with
Apple HomeKit



WORKS WITH
amazon alexa



works with
Google Home



Works with
Samsung
SmartThings



Image 6.3: Shelly 1 Gen4 used for smart garage door management.

7. MAINTENANCE

To ensure optimal performance and longevity of your Shelly 1 Gen4, consider the following maintenance guidelines:

- **Cleaning:** Gently wipe the device with a dry, soft cloth. Do not use liquid cleaners or solvents.
- **Firmware Updates:** Regularly check for and install firmware updates via the Shelly Smart Control App to ensure you have the latest features and security enhancements.
- **Environmental Conditions:** Ensure the device is operated within its specified temperature and humidity ranges.

8. TROUBLESHOOTING

If you encounter issues with your Shelly 1 Gen4, try the following steps:

- **Device Not Responding:**

- Check if the device is receiving power.
- Verify Wi-Fi/Zigbee/Matter network connectivity.
- Ensure the device is within range of your router or hub.
- Perform a power cycle (turn off power for 10 seconds, then turn back on).

- **Difficulty Pairing:**

- Ensure your smartphone is connected to a 2.4 GHz Wi-Fi network during initial setup.
- Reset the device to factory settings (refer to the Shelly support website for specific instructions).
- Try pairing again, ensuring the device is in discovery mode.

- **Inaccurate Status:**

- Check the wiring connections to ensure they are secure.
- Verify that the Shelly Smart Control App is up to date.

For more detailed troubleshooting guides, please visit the Shelly support website.

9. SPECIFICATIONS

| Feature | Value |
|--------------------|----------------------------------|
| Model Number | 3800238070687 |
| Connectivity | Wi-Fi, Zigbee, Matter, Bluetooth |
| Channels | 1-Channel |
| Current Rating | 16 Amps |
| Voltage (AC) | 110-240V~ |
| Voltage (DC) | 12V, 24-48V |
| Contact Type | Normally Open (Dry Contacts) |
| Product Dimensions | 0.63 x 1.65 x 1.46 inches |
| Weight | 0.92 ounces |
| Mounting Type | Wall Mount |
| Manufacturer | Shelly Europe |
| Material | Steel |

10. WARRANTY INFORMATION

The Shelly 1 Gen4 comes with a **3-year device warranty**. Please retain your proof of purchase for warranty claims. For detailed warranty terms and conditions, refer to the official Shelly website or contact customer support.

11. SUPPORT AND CONTACT

For further assistance, technical support, or to access additional resources, please use the following channels:

- **Shelly Support Website:** Access knowledge base articles, FAQs, and detailed guides.
<https://support.shelly.cloud/en/support/home>
- **Technical Support:** Contact Shelly's professional support team for personalized assistance.
- **Community Forums:** Engage with other users and find solutions in Facebook Support Groups and the Reddit community.
- **Shelly Academy:** Explore video tutorials and webinars for in-depth learning.



Image 11.1: Scan the QR code for direct access to Shelly support resources.