

Manuals+

[Q & A](#) | [Deep Search](#) | [Upload](#)

manuals.plus /

- › [GarveeHome](#) /
- › [GarveeHome 60x24.5 LED Bathroom Mirror User Manual](#)

GarveeHome 60x24.5 LED Bathroom Mirror

GarveeHome 60x24.5 LED Bathroom Mirror User Manual

Model: 60x24.5 LED Bathroom Mirror

1. INTRODUCTION

Thank you for choosing the GarveeHome 60x24.5 LED Bathroom Mirror. This smart vanity mirror is designed to enhance your bathroom experience with its advanced features, including dimmable lighting, anti-fog functionality, and a memory setting. This manual provides essential information for safe installation, operation, and maintenance of your new mirror.



Image 1.1: The GarveeHome 60x24.5 LED Bathroom Mirror featuring both backlit and front-lit illumination, installed horizontally above a double vanity.

2. SAFETY INSTRUCTIONS

- Always disconnect power at the circuit breaker before installation or maintenance.
- Installation should be performed by a qualified electrician if you are unsure about wiring procedures.
- Handle the mirror with care. Although made of shatter-proof tempered glass, improper handling can cause damage or injury.
- Do not strike the mirror with hard objects.
- Ensure the mounting surface is structurally sound and can support the mirror's weight (approximately 40.2 lbs).
- Keep children away from the installation area.
- This mirror is designed for indoor use in damp locations (e.g., bathrooms) but should not be directly exposed to water spray.

SAFETY TEMPERED MIRROR



VS



Ours

5MM Tempered Glass

Safety & Durable

No Splashing When Broken

Others

Ordinary Glass

Fragile & Unsafe

Splashing When Broken

Image 2.1: Visual comparison demonstrating the safety of 5mm tempered glass, which crumbles into small, less hazardous pieces upon impact, versus ordinary glass that breaks into sharp shards.

3. PACKAGE CONTENTS

Verify that all components are present and undamaged before proceeding with installation.

- GarveeHome LED Bathroom Mirror (1 unit)
- Mounting Hardware (screws, wall anchors)
- Instruction Manual (this document)

4. INSTALLATION GUIDE

The mirror can be mounted horizontally or vertically. Choose your desired orientation before marking the wall.

4.1 Tools Required (Not Included)

- Pencil
- Measuring Tape
- Drill
- Level
- Screwdriver

4.2 Mounting Steps

1. **Measure and Mark:** Determine the desired height and center position for your mirror. Use a level to mark the positions for the mounting brackets on the wall. Ensure the marks are accurate for horizontal or vertical alignment.
2. **Drill Holes:** Using an appropriate drill bit for your wall type, drill holes at the marked locations.
3. **Insert Wall Anchors:** If installing into drywall, insert the provided wall anchors into the drilled holes.
4. **Secure Mounting Hardware:** Attach the mounting brackets or screws firmly into the wall anchors or studs.
5. **Electrical Connection:** Before connecting, ensure the power supply is OFF at the circuit breaker. Connect the mirror's electrical wires to your household wiring according to local electrical codes. Typically, this involves connecting live to live, neutral to neutral, and ground to ground. Secure all connections with wire nuts.
6. **Hang the Mirror:** Carefully lift the mirror and align its hanging slots with the secured mounting hardware. Gently lower the mirror until it is securely seated. It is recommended to have two people for this step due to the mirror's size and weight.
7. **Restore Power:** Once the mirror is securely mounted and wired, restore power at the circuit breaker.

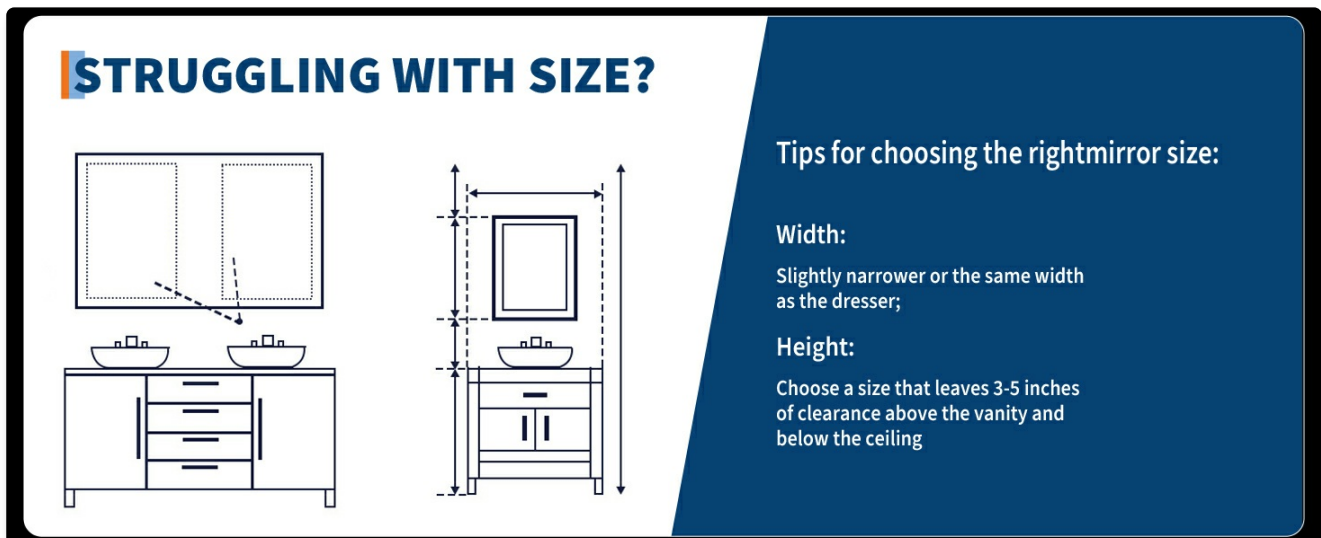


Image 4.1: Guidelines for selecting appropriate mirror dimensions relative to a vanity, suggesting width slightly narrower or same as the dresser, and height allowing 3-5 inches of clearance above the vanity and below the ceiling.

5. OPERATING INSTRUCTIONS

Your GarveeHome LED Bathroom Mirror features intuitive touch controls integrated into the mirror surface.

5.1 Power On/Off and Lighting Adjustment

- **Power:** Tap the power icon on the mirror surface to turn the lights on or off.
- **Color Temperature Change:** Short press the color temperature icon to cycle through three distinct color temperatures: warm light (3000K), natural light (4000K), and white light (6000K).
- **Stepless Dimming:** Long press the color temperature icon to smoothly adjust the brightness level from 10% to

100% within the selected color temperature. Release when the desired brightness is achieved.

COLOR TEMPERATURE



6500K
Cold Light

3000K
Neutral Light

4500K
Warm Light

 **Short press to change 3 color temperatures**
Long press to step-less dimmable in 3000-6500K

Image 5.1: Illustration of the three available color temperatures (Cold Light, Neutral Light, Warm Light) and instructions for short press to change color and long press for stepless dimming.



Image 5.2: The mirror's dimming capability, allowing brightness adjustment from 10% to 100% by long-pressing the control button.

5.2 Anti-Fog Function

- **Activate Defogger:** Tap the defog icon on the mirror surface to activate the anti-fog function. The defogger will begin to clear condensation from the mirror surface.
- **Automatic Shut-off:** The anti-fog function is designed to automatically turn off after 1 hour of continuous operation to conserve energy.

ANTI-FOG FUNCTION



· Safe and fast defogging



· Auto turn off after 1 hour



Before



After

Image 5.3: Demonstration of the anti-fog function, showing a clear mirror surface after activation compared to a fogged surface before.

5.3 Memory Function

The mirror is equipped with a memory function that automatically saves your last lighting settings (brightness and color temperature). When you turn the mirror back on, it will resume with the previously used settings.



Image 5.4: The memory function ensures the mirror automatically recalls the last light setting used, providing convenience for daily routines.

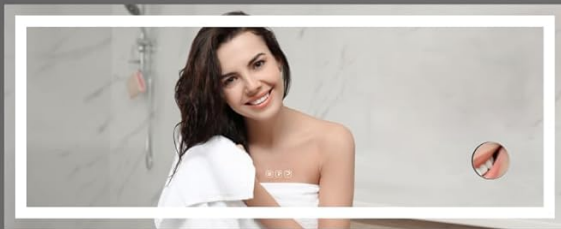
6. FEATURES OVERVIEW

- **Double Lighting Sources:** Features both backlit and front-lit designs for comprehensive illumination, suitable for various tasks like makeup application or shaving.

BACKLIT+FRONT LIGHTED MIRROR



||



Front Lit

+



Backlit

Image 6.1: The mirror combines both front-lit and backlit LED sources to provide optimal illumination.

- **Dimmable & 3 Color Temperatures:** Offers stepless dimming and three color temperature options (3000K warm, 4000K natural, 6000K white) for customizable ambiance.
- **Anti-Fog Function:** Integrated defogger keeps the mirror clear, automatically turning off after 1 hour.
- **Memory Function:** Retains your last used lighting settings for convenience.
- **Shatter-Proof Design:** Constructed from 5mm tempered glass, offering enhanced durability and safety by crumbling into small, less hazardous pieces if broken.
- **Versatile Mounting:** Can be installed horizontally or vertically to suit different bathroom layouts or other spaces.

WIDELY APPLICABLE



Image 6.2: The mirror's versatile design allows for application in various settings, including bathrooms, dressers, and hair salons, adaptable for both horizontal and vertical orientations.

7. CARE AND MAINTENANCE

- **Cleaning:** Use a soft, damp cloth with a mild glass cleaner to clean the mirror surface. Avoid abrasive cleaners or harsh chemicals that could damage the mirror or its electronic components.
- **Frame Care:** The mirror has a silver frame. Clean with a soft, dry cloth.
- **Electrical Components:** Ensure the mirror is completely dry before restoring power after cleaning. Do not spray water directly onto the mirror's edges or electrical components.
- **Inspection:** Periodically check the mounting hardware to ensure the mirror remains securely attached to the wall.

8. TROUBLESHOOTING

Problem	Possible Cause	Solution
---------	----------------	----------

Problem	Possible Cause	Solution
Mirror lights do not turn on.	No power supply; loose wiring; faulty switch.	Check circuit breaker. Verify wiring connections. Contact a qualified electrician if issues persist.
Anti-fog function not working.	Function not activated; electrical issue.	Ensure the anti-fog icon is tapped. Check power supply.
Lights flicker or dim unexpectedly.	Unstable power supply; loose connection.	Verify power source stability. Check wiring connections.
Touch controls are unresponsive.	Mirror surface is wet or dirty; temporary electronic glitch.	Ensure the mirror surface is clean and dry. Try cycling power at the circuit breaker for a few minutes to reset.

9. PRODUCT SPECIFICATIONS

Feature	Specification
Brand	GarveeHome
Model Number	gLDbTzexl6PCO1V8jYm39gv01
Product Dimensions	60"L x 24.5"W
Shape	Rectangular
Frame Material	Glass
Mirror Material	5mm Tempered Glass
Mounting Type	Wall Mount (Horizontal/Vertical)
Lighting	LED Backlit + Front Lit
Color Temperatures	3000K (Warm), 4000K (Natural), 6000K (White)
Dimming	Stepless Dimmable
Special Features	Anti-Fog, Memory Function, Shatter-Proof
Item Weight	40.2 Pounds
Assembly Required	Yes
UPC	199641729019

10. WARRANTY AND CUSTOMER SUPPORT

For warranty information, technical assistance, or any questions regarding your GarveeHome LED Bathroom Mirror, please contact GarveeHome customer support through the retailer where the product was purchased or visit the

official GarveeHome website.

Please have your model number (gLDbTzexl6PCO1V8jYm39gv01) and purchase date available when contacting support.

© 2025 GarveeHome. All rights reserved.