

## homary ZS750M67J7

# Homary LED Wall Art Instruction Manual

Model: ZS750M67J7

## INTRODUCTION

---

Thank you for choosing the Homary LED Wall Art. This modern abstract stone design, featuring integrated USB-powered LED lighting, is designed to enhance the ambiance of your living space. This manual provides essential information for the safe installation, operation, and maintenance of your new wall art.

## SAFETY INFORMATION

---

- Read all instructions carefully before installation and use.
- Keep the product away from water and moisture. This product is for indoor use only and is not water resistant.
- Ensure the wall surface is clean, dry, and capable of supporting the weight of the wall art before mounting.
- Use appropriate mounting hardware for your wall type (not included).
- Do not attempt to modify or repair the LED strip or electrical components. Contact qualified personnel for service.
- Disconnect the USB power source before cleaning or performing any maintenance.
- Keep out of reach of children.

## PACKAGE CONTENTS

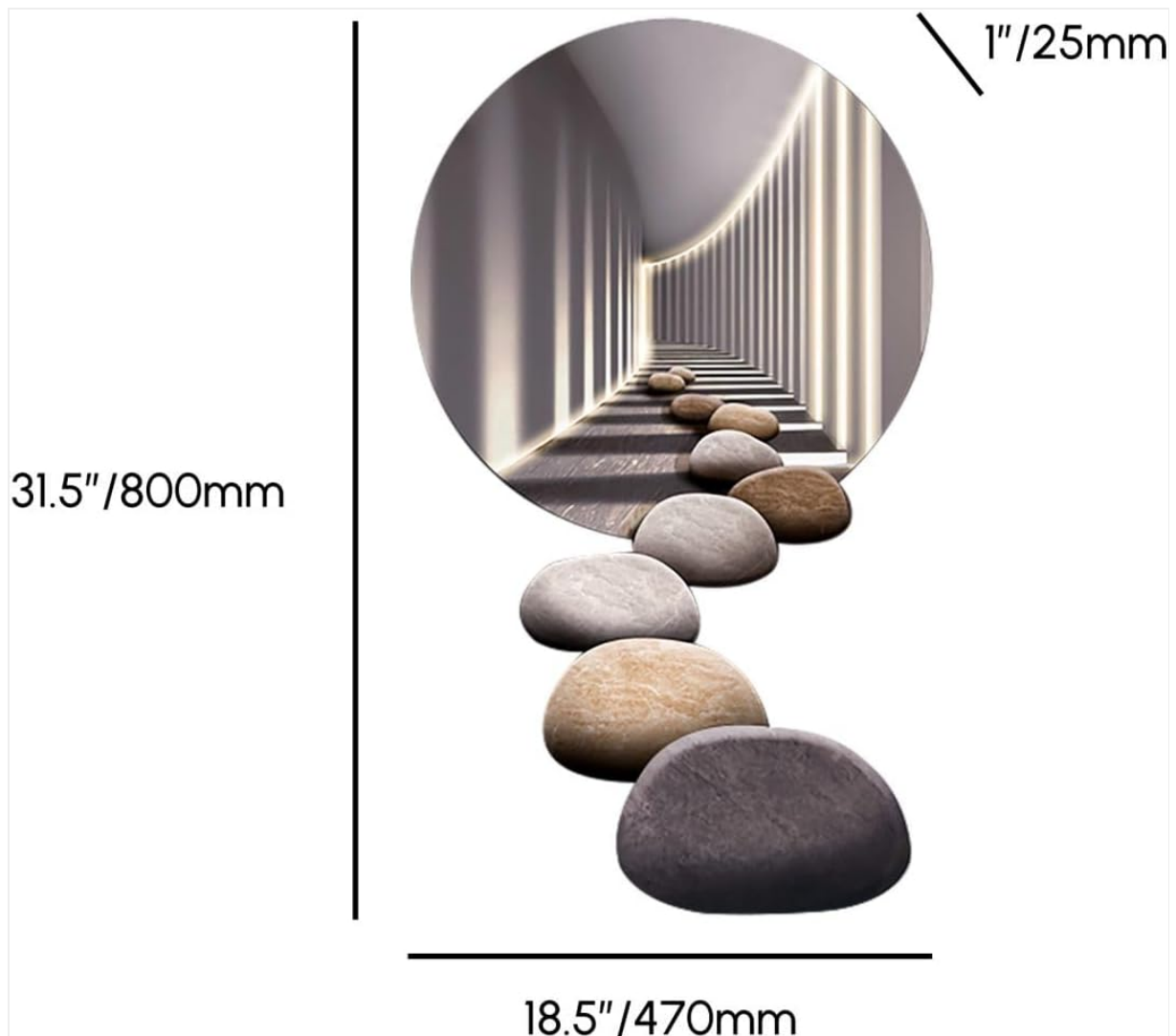
---

Please check that all components are present:

- Homary LED Wall Art (MDF frame with acrylic panel and integrated LED strip)
- USB Power Cable
- Instruction Manual (this document)

## SPECIFICATIONS

<b>Brand</b>	homary
<b>Model Number</b>	ZS750M67J7
<b>Material</b>	MDF, Acrylic
<b>Item Dimensions (L x W x H)</b>	1.2"L x 9.8"W x 39.4"H (30mm L x 249mm W x 1001mm H)
<b>Power Source</b>	Corded Electric (USB-Powered)
<b>LED Strip Voltage</b>	5V
<b>Light Source</b>	LED
<b>Light Color</b>	Warm White
<b>Brightness</b>	200 lumen
<b>Mounting Type</b>	Wall Mount
<b>Indoor/Outdoor Usage</b>	Indoor Only

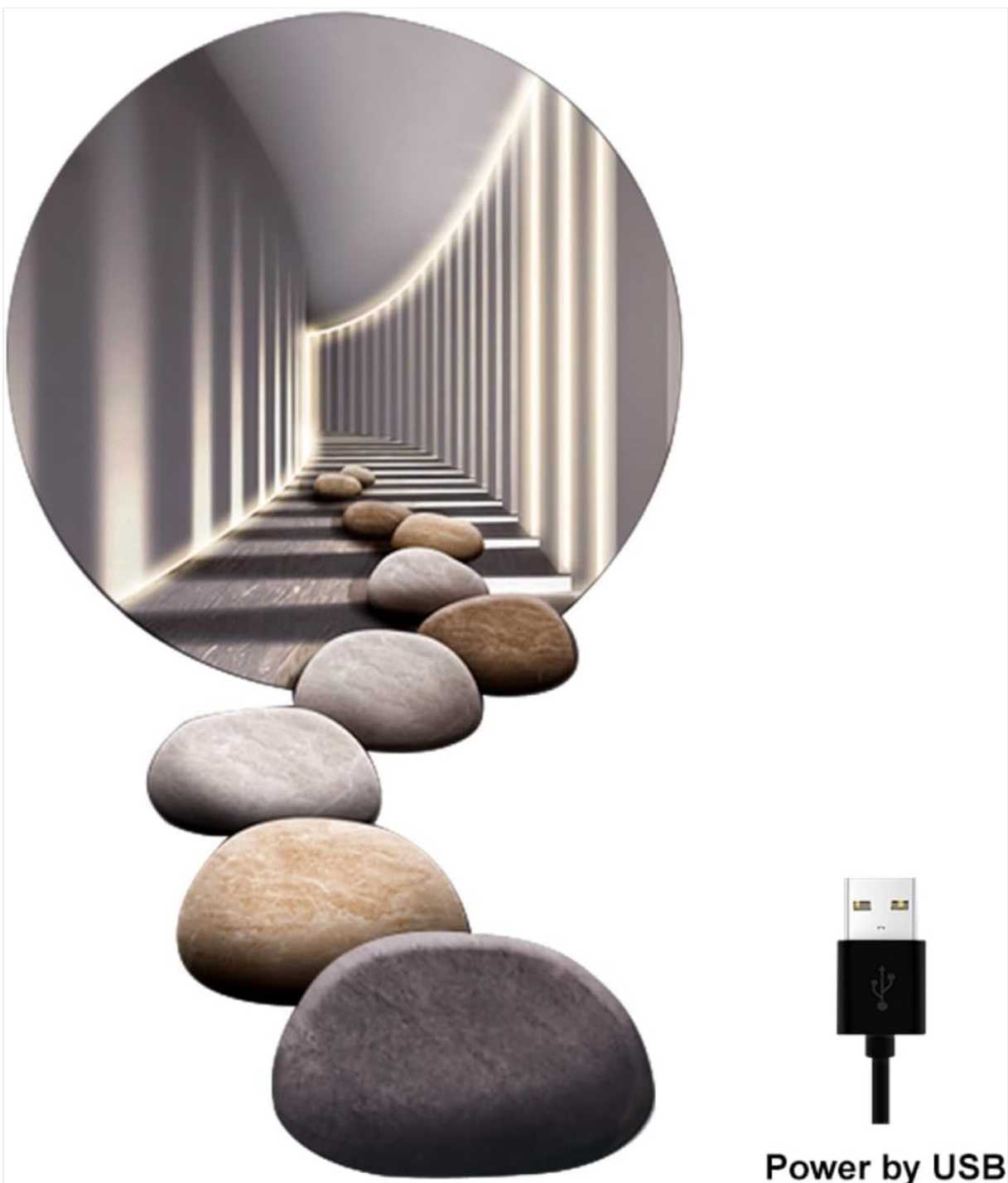


**Image:** Product dimensions showing 31.5 inches (800mm) height and 18.5 inches (470mm) width, with a depth of 1 inch (25mm).

## SETUP AND INSTALLATION

The Homary LED Wall Art is designed for easy wall mounting. Follow these steps for installation:

1. **Choose Location:** Select a suitable indoor wall location, ensuring it is clean, dry, and has access to a USB power source (e.g., USB wall adapter, power bank, or computer USB port).
2. **Mark Mounting Points:** Carefully measure and mark the desired mounting points on the wall. The wall art is lightweight but requires secure attachment.
3. **Install Mounting Hardware:** Install appropriate wall anchors and screws (not included) suitable for your wall type (e.g., drywall, concrete, wood studs) at the marked points. Ensure the hardware is level and securely fastened.
4. **Mount the Wall Art:** Carefully hang the LED wall art onto the installed mounting hardware. Ensure it is stable and securely seated.
5. **Connect USB Power:** Connect the provided USB power cable to the LED strip on the back of the wall art. Plug the other end of the USB cable into a 5V USB power source.



**Image:** The Homary LED Wall Art showing the USB power input for connection to a power source.

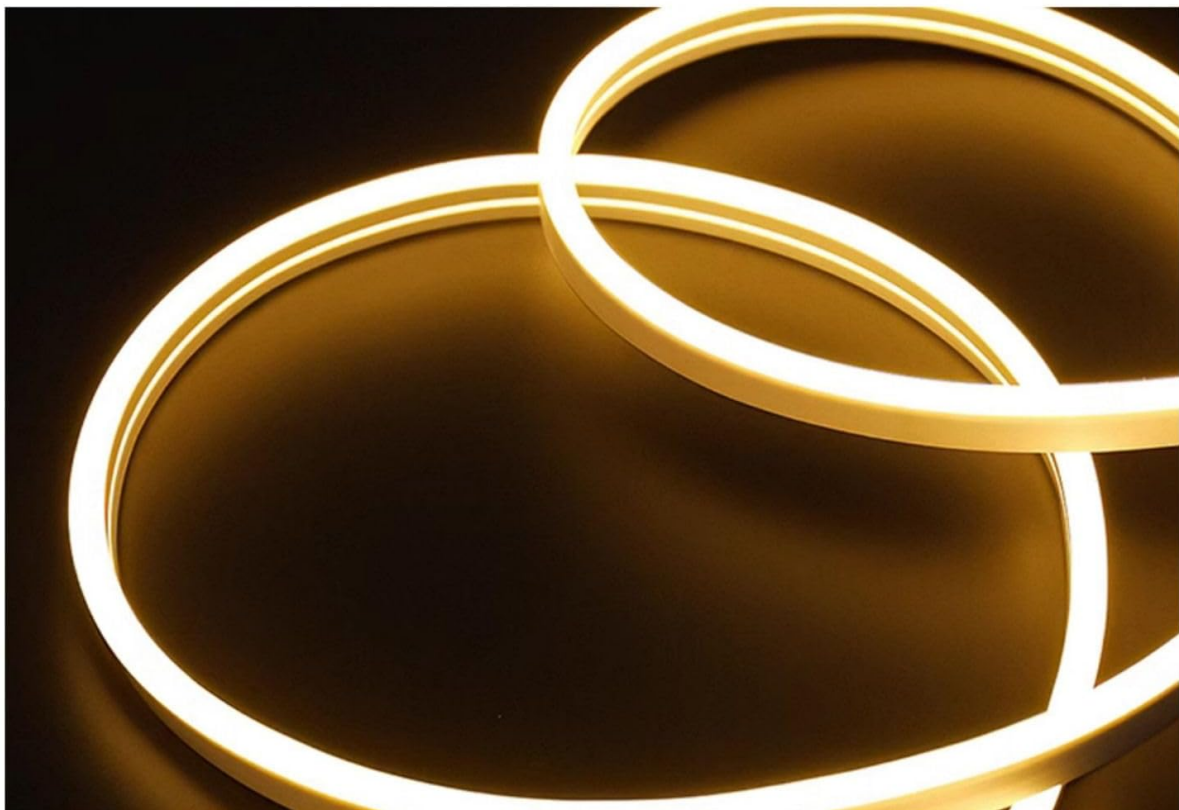
## OPERATING INSTRUCTIONS

---

Once properly installed and connected to a USB power source, the LED wall art will illuminate. There are no external controls; the light activates upon power connection.

- **Power On:** Connect the USB cable to a powered USB port or adapter. The LED light strip will turn on, emitting a warm white glow.
- **Power Off:** Disconnect the USB cable from the power source to turn off the LED light.

**LED light strip, no strobe light perceived by the naked eye, as natural as the sun.**



**Natural Brightness**



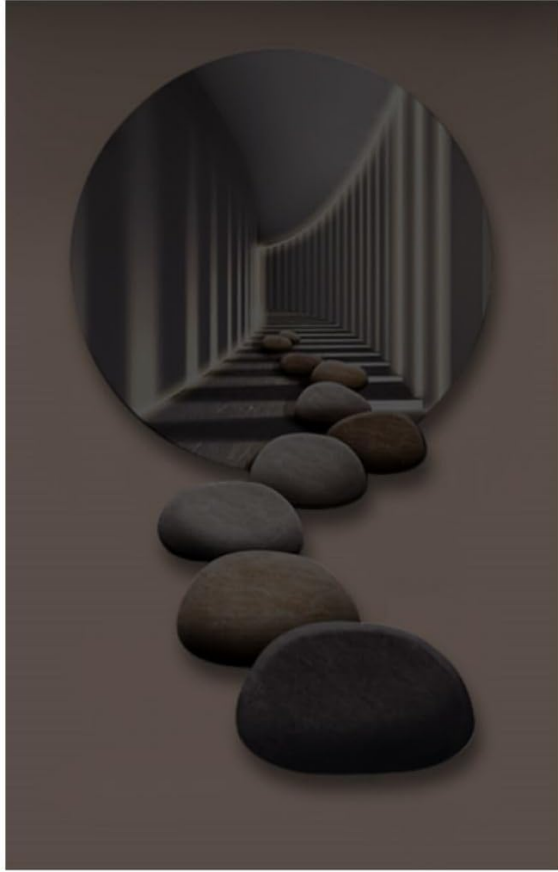
**Soft Light  
For Eye Protection**



**Low Voltage  
And Power Saving**

**Image:** A close-up view of the LED light strip, highlighting its soft, non-strobe illumination for eye protection and energy efficiency.

## The Effect in Dark Environment



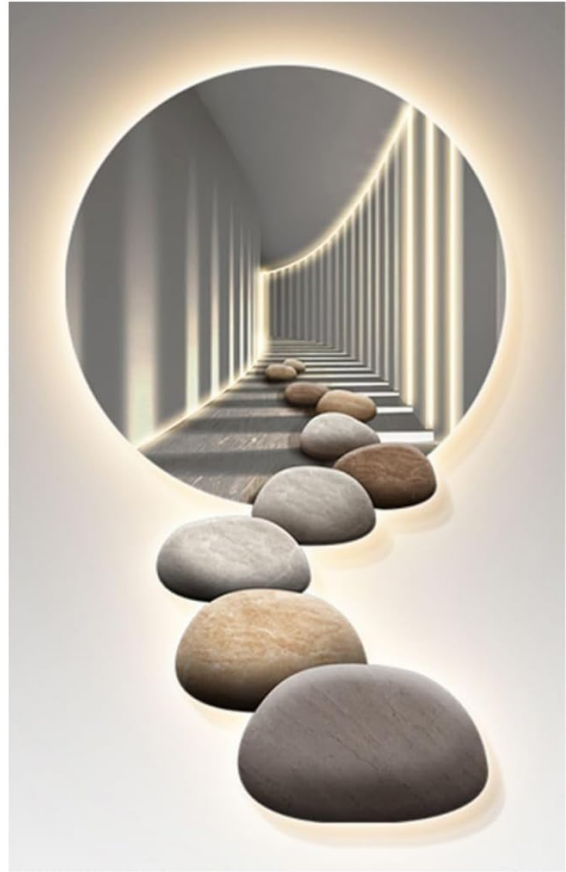
**The Effect of Turning Off The Light**



**The Effect of Turning On The Light**

**Image:** Comparison showing the visual effect of the wall art in a dark environment, both with the LED light off and on, demonstrating the warm glow.

## The Effect in Bright Environment



**The Effect of Turning Off The Light**

**The Effect of Turning On The Light**

**Image:** Comparison showing the visual effect of the wall art in a bright environment, both with the LED light off and on, illustrating its decorative presence.

## MAINTENANCE

---

To ensure the longevity and appearance of your Homary LED Wall Art, follow these maintenance guidelines:

- **Cleaning:** Disconnect the USB power cable before cleaning. Gently wipe the acrylic surface and MDF frame with a soft, dry, or slightly damp cloth. Do not use abrasive cleaners, solvents, or harsh chemicals, as these can damage the finish and acrylic.
- **Dusting:** Regularly dust the surface with a soft, lint-free cloth to prevent buildup.
- **Avoid Direct Sunlight:** Prolonged exposure to direct sunlight may cause fading or damage to the materials.

## TROUBLESHOOTING

---

If you encounter issues with your LED Wall Art, refer to the following common problems and solutions:

- **LED Light Does Not Turn On:**
  - Ensure the USB cable is securely connected to both the wall art and the power source.
  - Verify that the USB power source (e.g., wall adapter, power bank) is functioning correctly and providing 5V output. Try a different USB port or adapter.
  - Check for any visible damage to the USB cable or LED strip.

- **Light is Dim or Flickering:**

- Ensure the USB power source is providing sufficient and stable power (5V).
- Try a different USB cable or power adapter.

- **Wall Art is Not Stable on Wall:**

- Re-check the mounting hardware and ensure it is appropriate for your wall type and securely installed.
- Verify that the wall art is properly seated on the mounting points.

## WARRANTY INFORMATION

---

The Homary LED Wall Art (Model ZS750M67J7) comes with a **1-year manufacturer's warranty** from the date of purchase. This warranty covers defects in materials and workmanship under normal use. It does not cover damage resulting from improper installation, misuse, accidents, unauthorized repairs, or normal wear and tear. Please retain your proof of purchase for warranty claims.

## SUPPORT

---

For further assistance, technical support, or warranty inquiries, please contact Homary customer service through the retailer where the product was purchased or visit the official Homary website for contact information.