

## Manuals+

[Q & A](#) | [Deep Search](#) | [Upload](#)

Manuals.plus /

> [BUAIAHUG](#) /

> BUAIAHUG Nut Milk Maker Machine 20oz - Instruction Manual

## BUAIAHUG NUT01

# BUAIAHUG Nut Milk Maker Machine (Model: NUT01) - Instruction Manual

Your guide to operating and maintaining your BUAIAHUG Nut Milk Maker Machine.

## PRODUCT OVERVIEW

The BUAIAHUG Nut Milk Maker Machine (Model: NUT01) is an upgraded 10-blade appliance designed for creating fresh, plant-based, dairy-free beverages. It features a 20oz capacity and offers versatile functions for both hot and cold drinks, including auto-clean, sterilize, keep warm, and a 12-hour timer.



Image: BUAIAHUG 20oz Nut Milk Maker Machine, showcasing its multifunctional capabilities for oat, coconut, cashew, carrot, and rice milk.

## KEY FEATURES

- **Upgraded 10-Blade Design:** Features 10 stainless steel cross blades for powerful blending, ensuring silky-smooth nut milk. A filter bag is included for an even softer texture.
- **20oz Capacity with Low-Noise Operation:** Produces up to 20oz (600ml) of fresh plant-based milk. The soundproof design ensures quiet operation.
- **Smart LED Touch Screen & Safety Features:** Easy-to-use touch screen for setting timer and temperature.

Includes auto shut-off and overheating protection.

- **9-in-1 Versatile Functions:** Capable of making almond milk, soy milk, smoothies, hot/cold vegan drinks, baby food, and juice. Also includes auto-clean, sterilize, keep warm, and a 12-hour timer.



Image: Detailed view of the updated 10-leaf blade system for efficient blending.

## SETUP AND INITIAL USE

1. **Unpack:** Carefully remove all components from the packaging.
2. **Clean:** Before first use, wash the interior of the machine and the lid with water and mild detergent. Wipe the exterior with a damp cloth.
3. **Placement:** Place the machine on a stable, flat surface.
4. **Power Connection:** Ensure the machine is properly plugged into a power outlet.

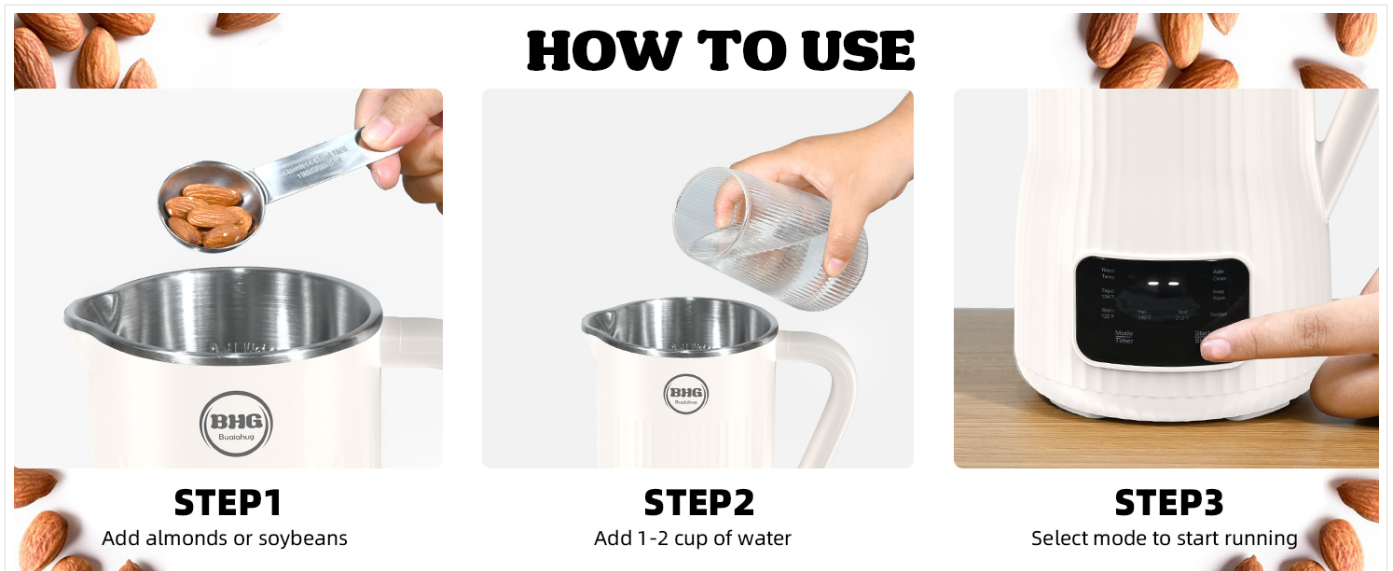


Image: Visual guide for initial use, demonstrating adding ingredients, water, and selecting a mode.

## OPERATING INSTRUCTIONS

1. **Add Ingredients:** Place your desired nuts, grains, fruits, or vegetables into the machine's inner pot.
2. **Add Water:** Pour water up to the indicated MAX fill line (600ml for 20oz model).
3. **Secure Lid:** Close the lid firmly. The machine features a safety induction system; ensure the lid is correctly aligned

for operation (an E2 error may display if not properly closed).

4. **Select Mode:** Use the LED touch screen to select your desired function (e.g., Soy Milk, Oat Milk, Juice, Baby Food, Keep Warm, Boil, Cold Drink).
5. **Start:** Press the "Start/Stop" button to begin the selected program.
6. **Delay Start (Optional):** Utilize the 12-hour timer function to schedule your milk preparation in advance.



Image: Illustration of the safety feature requiring proper lid alignment to prevent an E2 error.

## RECIPES

The BUAIAHUG Nut Milk Maker can create a variety of plant-based milks and beverages. Here are a few examples:

### Almond Milk

- 2 tbsp almonds
- 1 pitted date (optional, for sweetness)
- 1 cup water
- 1/4 tsp vanilla extract and pinch of salt (optional)

Add all ingredients to the machine and run through the appropriate cycle. Strain as desired for a smoother texture.



Image: Recipe for Almond Milk, showing ingredients and the final beverage.

## Soy Milk

- 1 tbsp dried yellow soybeans, rinsed
- Pinch of salt
- 1 tbsp maple syrup, honey, or preferred sweetener (optional)
- 1/4 tsp vanilla extract (optional)
- 1 cup water

Add all ingredients to the machine and run through one Boil cycle. Strain and let cool. Enjoy your soy milk warm or place in the fridge to cool. *Note: Uncooked soybeans must be boiled on the Boil setting to reach a 212°F boiling temperature to be safely consumed.*



Image: Recipe for Soy Milk, detailing ingredients and preparation steps.

## Coconut Milk Coffee

- 4 tbsp cashews
- 1 cup water
- 1.5 tsp cocoa powder
- 1 tbsp coconut sugar

Combine all ingredients in the machine and select the appropriate hot beverage setting. Enjoy a warm, dairy-free coffee alternative.



Image: Recipe for Coconut Milk Coffee, showing ingredients and the final iced coffee beverage.

## MAINTENANCE AND CLEANING

---

The BUAlAHUG Nut Milk Maker features an auto-clean function for convenience.

1. **Auto-Clean:** After use, add water to the machine and select the "Auto Clean" function. This will help remove residue from the blades and interior.
2. **Manual Cleaning:** For thorough cleaning, hand wash the inner pot and blades with mild soap and water. The product care instructions specify "Hand Wash Only."
3. **Exterior:** Wipe the exterior of the machine with a damp cloth. Do not immerse the main unit in water.
4. **Sterilize:** Use the sterilize function periodically to ensure hygiene.

# 120s AUTO-CLEAN

More fast, simple, and trouble-free, saving you time.



Image: The nut milk maker in action, demonstrating its 120-second auto-clean feature.

## SAFETY INFORMATION

- Always ensure the lid is properly aligned and closed before operation to prevent the E2 error and ensure safety.

- The machine has built-in auto shut-off and overheating protection for safe use.
- Do not immerse the main unit in water.
- Keep out of reach of children.

## TROUBLESHOOTING

---

- **Machine does not turn on:** Ensure the power cord is securely plugged into both the machine and a working electrical outlet. Check if the lid is properly closed and aligned.
- **E2 Error displayed:** This indicates the lid is not properly aligned or closed. Re-align and firmly close the lid until the error disappears.
- **Milk is not smooth enough:** Ensure you are using the recommended ingredient-to-water ratio. For extra smoothness, use the included filter bag after processing.
- **Overheating:** The machine has overheating protection and will automatically shut off. Allow it to cool down before attempting to use it again. Ensure proper ventilation around the unit.

## SPECIFICATIONS

---

<b>Brand</b>	BUAIAHUG
<b>Model Name</b>	NUT01
<b>Capacity</b>	20oz (600ml)
<b>Color</b>	White
<b>Material</b>	Stainless Steel
<b>Special Feature</b>	Auto Shut-Off, Keep Warm, Auto-Clean, Sterilize, Timer
<b>Product Dimensions</b>	4.7 x 6.3 x 11.8 inches
<b>Item Weight</b>	3.5 pounds (1.59 Kilograms)
<b>Product Care Instructions</b>	Hand Wash Only

## WARRANTY AND SUPPORT

---

The BUAIAHUG Nut Milk Maker Machine comes with a manufacturer's warranty. For specific details regarding your warranty coverage, please refer to the documentation included with your product or contact BUAIAHUG customer support.

- **Protection Plans:** Optional 3-Year and 4-Year Protection Plans are available for purchase.
- **Returns:** Products are eligible for refund/replacement within 30 days of purchase, subject to Amazon's return policy.

