

## Gawfolk GF005

# Gawfolk GF005 28-inch UHD 4K Computer Monitor User Manual

Model: GF005

## 1. INTRODUCTION

This manual provides essential information for the proper setup, operation, and maintenance of your Gawfolk GF005 28-inch UHD 4K Computer Monitor. Please read this manual thoroughly before using the product to ensure optimal performance and safety.

## 2. SAFETY INFORMATION

- Ensure the monitor is placed on a stable, level surface to prevent accidental falls.
- Do not expose the monitor to rain, moisture, or extreme temperatures.
- Avoid blocking ventilation openings to prevent overheating.
- Use only the power adapter supplied with the monitor.
- Disconnect the power cable from the outlet before cleaning or if the monitor will not be used for an extended period.
- Do not attempt to repair the monitor yourself. Refer all servicing to qualified personnel.

## 3. PACKAGE CONTENTS

Verify that all items are present in the package. If any items are missing or damaged, contact customer support.

**Video:** Gawfolk GF005 28-inch 4K Monitor Unboxing Video. This video demonstrates the unboxing process and displays all included accessories.

- Gawfolk GF005 28-inch UHD 4K Monitor
- Monitor Stand Base
- Monitor Mounting Arm
- DP Cable
- Power Adapter
- Monitor Manual
- Stand Base Screws

## 4. SETUP

---

Follow these steps to assemble and connect your monitor. For a visual guide, refer to the installation video below.

**Video:** Gawfolk GF005 28" 4K Monitor Mount Installation Video. This video provides a step-by-step demonstration of how to install the monitor stand.

### 4.1 Assembling the Stand

1. Carefully remove the monitor from its packaging, keeping it protected on a soft surface.
2. Attach the monitor mounting arm to the back of the monitor. Ensure it clicks securely into place.
3. Secure the monitor stand base to the mounting arm using the provided screws and screwdriver.
4. Place the assembled monitor on a stable desk or surface.



**Image:** Front view of the Gawfolk GF005 monitor with its stand assembled.

### 4.2 Connecting Cables

The monitor features multiple input ports for versatile connectivity.



**Image:** Rear view of the monitor detailing the available input ports (DC, HDMI 2.0 x2, DP 1.4 x2, Audio Out) and VESA mount points.

1. Connect the provided DP cable from your computer's graphics card to one of the DP 1.4 ports on the monitor for optimal 4K 60Hz performance. Alternatively, use an HDMI 2.0 cable for up to 4K 50Hz.
2. Connect the power adapter to the monitor's DC input and then to a power outlet.
3. If desired, connect external audio devices to the Audio Out port.

### 4.3 VESA Wall Mounting

The monitor supports standard 75x75mm VESA mounting for wall or arm installation (mounting hardware sold separately).

## 5. OPERATING INSTRUCTIONS

---

### 5.1 Powering On/Off

Press the power button, usually located on the back or bottom of the monitor, to turn it on or off. The power indicator light will illuminate when the monitor is on.



## 5.2 Adjusting Display Settings

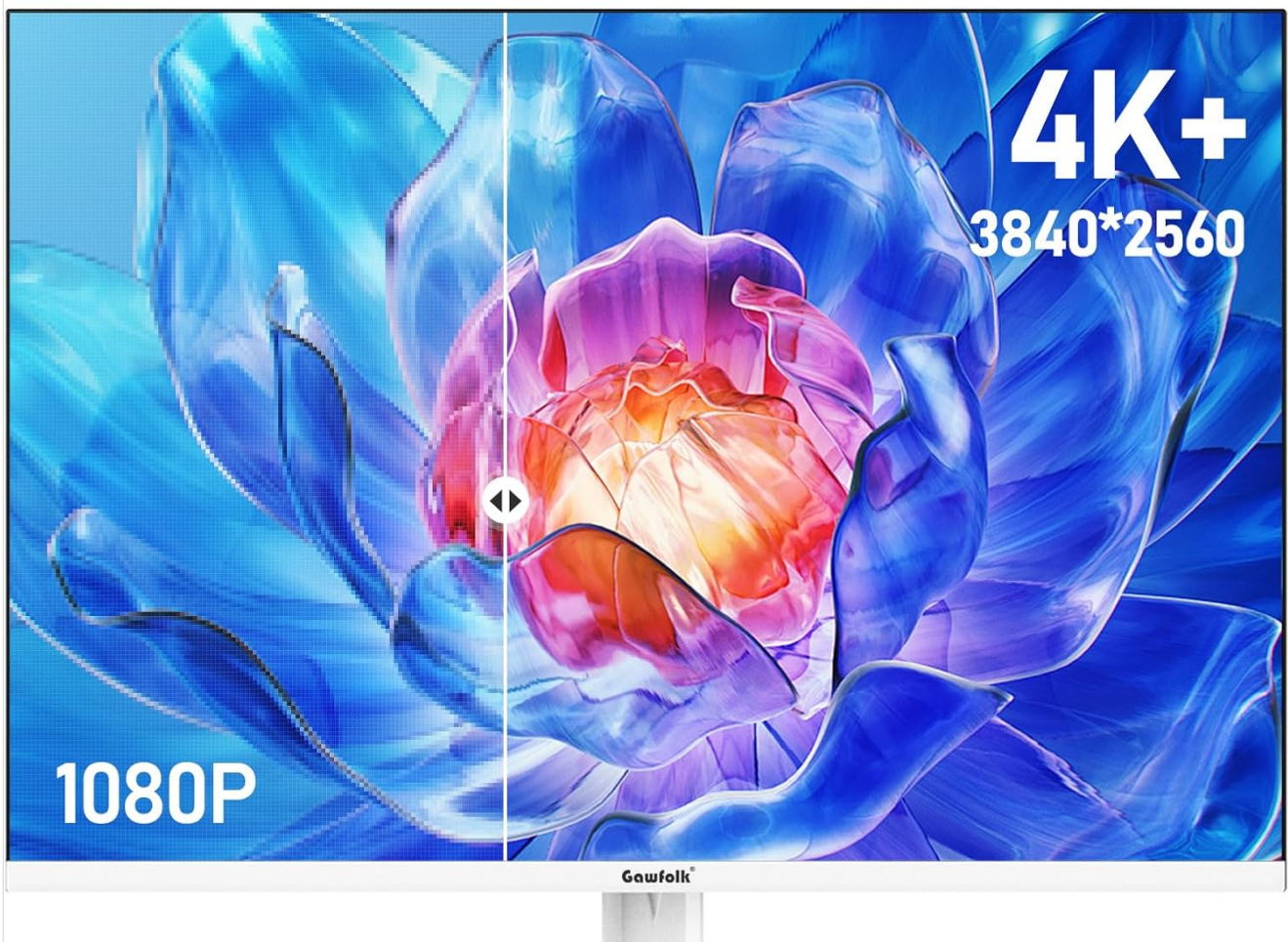
Use the control buttons (typically located on the back or bottom right) to navigate the On-Screen Display (OSD) menu. From the OSD, you can adjust settings such as brightness, contrast, color temperature, input source, and more.

## 5.3 Key Features

- **UHD 4K Resolution:** Enjoy sharp and detailed visuals with a 3840x2560 resolution IPS panel.
- **3:2 Aspect Ratio:** Offers increased vertical screen space, beneficial for document viewing and creative tasks.
- **10-Bit Color Depth:** Displays up to 1.07 billion colors with 128% sRGB coverage for accurate and vivid color reproduction.
- **Eye-Care Technologies:** Features DC dimming to reduce screen flicker and a low blue light design to minimize eye strain during extended use.
- **Adaptive Sync:** Synchronizes the monitor's 60Hz refresh rate with your graphics card to eliminate screen tearing and stuttering.
- **Built-in Speakers:** Integrated speakers provide audio for daily use, reducing desktop clutter.

# 4K+ ULTRA HD RESOLUTION

With a 3840x2560 ultra-high-definition resolution, precisely controlling the fine details during image processing



**Image:** Visual comparison demonstrating the clarity of 4K+ Ultra HD resolution.

# IPS HIGH COLOUR GAMUT SCREEN

IPS screen, equipped with native 10-bit colour depth, 1.07 billion colours, 128% sRGB colour gamut, faithful colour reproduction without bias, more precise and delicate colours, giving you a more brilliant visual experience.

**PANEL  
IPS**

**10Bit**  
Colour depth

**1.07** billion  
colours

**128%**  
sRGB



**8Bit**



**10Bit**



**Image:** Illustration of the IPS panel's high color gamut and 10-bit color depth capabilities.



# 60HZ REFRESH RATE

Balancing study and entertainment, you can enjoy an immersive movie experience at home



**Image:** Depiction of the monitor's built-in dual speakers providing audio.

# DC DIMMING+LOW BLUE LIGHT

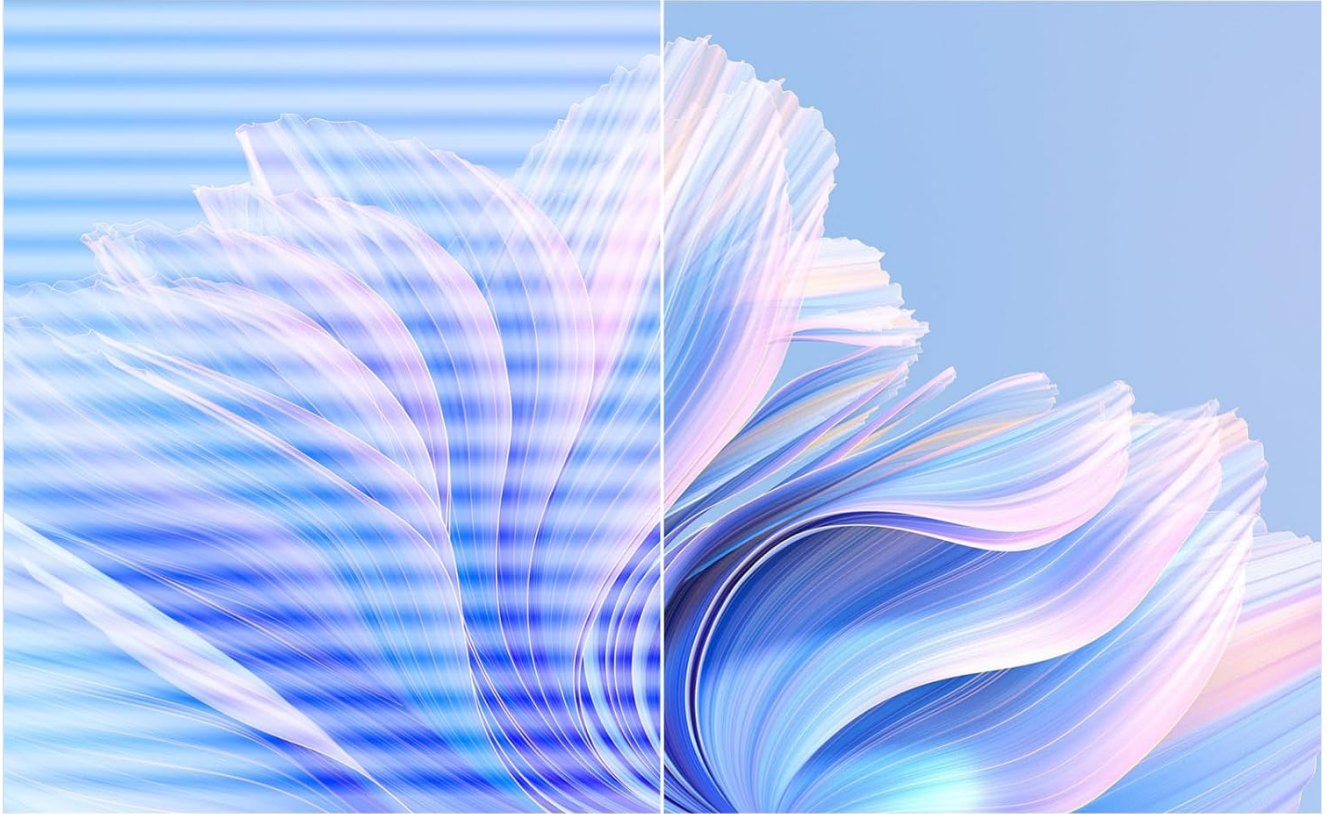
Reduces harmful blue light and minimises screen flicker for comfortable, extended viewing



DC Dimming  
Low Blue Light



270cd/m<sup>2</sup>  
Brightness

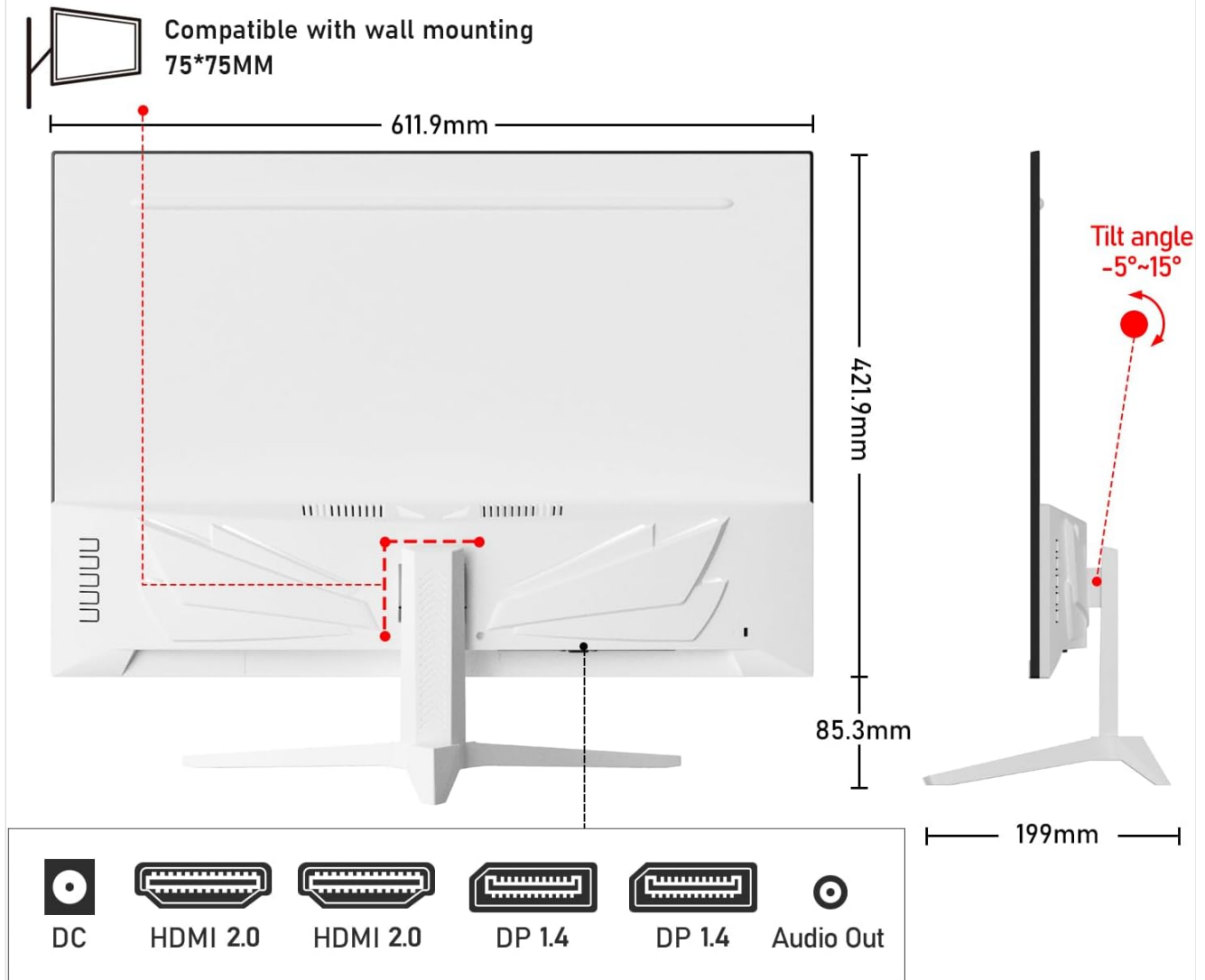


▲ Blue light, flickering screen

▲ Low blue light, DC dimming

**Image:** Visual representation of the smoothness provided by a 60Hz refresh rate compared to conventional displays.

# INTERFACE & DIMENSIONS



## HDMI (up to 50 Hz), DP (up to 60 Hz)

If your computer supports 3840\*2560/60 Hz, connect the monitor via the supplied DP cable.

**Image:** Diagram illustrating the benefits of DC Dimming and Low Blue Light technology for reducing eye strain.

## 6. MAINTENANCE

### 6.1 Cleaning the Monitor

- Always unplug the monitor before cleaning.
- Use a soft, lint-free cloth lightly dampened with water or a mild, non-abrasive screen cleaner.
- Do not spray cleaner directly onto the screen.
- Avoid using benzene, thinner, ammonia-based cleaners, or abrasive materials.

### 6.2 Storage

If storing the monitor for an extended period, place it in its original packaging in a dry, cool environment away from direct sunlight.

## 7. TROUBLESHOOTING



If you encounter issues with your monitor, refer to the following common problems and solutions:

- **No Power:** Ensure the power cable is securely connected to both the monitor and the power outlet. Verify the power outlet is functional.
- **No Signal:** Check that the video cable (DP or HDMI) is firmly connected to both the monitor and your computer. Ensure the correct input source is selected in the monitor's OSD menu.
- **Flickering Screen:** Confirm that the video cable is properly connected. Adjust the refresh rate settings on your computer. Ensure Adaptive Sync is enabled if supported by your graphics card.
- **Poor Image Quality:** Adjust brightness, contrast, and color settings via the OSD menu. Ensure your computer's display resolution matches the monitor's native resolution (3840x2560).
- **No Sound from Built-in Speakers:** Check the volume settings on both the monitor and your computer. Ensure the correct audio output device is selected on your computer.






If the problem persists after attempting these solutions, please contact Gawfolk customer support.

## 8. SPECIFICATIONS

Feature	Specification
Screen Size	28 Inches
Panel Type	IPS
Resolution	3840 x 2560 Pixels (UHD 4K)
Aspect Ratio	3:2
Color Depth	10-Bit (1.07 Billion Colours)
Color Gamut	128% sRGB
Refresh Rate	60Hz (DP), 50Hz (HDMI)
Image Brightness	270 Candela
Viewing Angle	178° Wide Viewing Angle
Connectivity	2x HDMI 2.0, 2x DisplayPort 1.4, Audio Out
Speakers	Built-in
VESA Mount	75x75mm
Product Dimensions	7.83 x 24.09 x 19.96 inches
Item Weight	7.48 pounds
Model Number	GF005

## 9. WARRANTY AND SUPPORT

Gawfolk provides 12 months of after-sales service for this monitor. If you encounter any problems or require assistance, please feel free to communicate with us through the retailer or the official Gawfolk support channels.

	<p><a href="#">Gawfolk GF240D 24-Inch Gaming Monitor User Manual</a></p> <p>Comprehensive user manual for the Gawfolk GF240D 24-inch gaming monitor, covering setup, features, troubleshooting, and specifications. This 165Hz, 144Hz FHD 1080P curved monitor offers VA display with 99% sRGB and Eye-Care technology.</p>
	<p><a href="#">Gawfolk GF320A Monitor User Manual</a></p> <p>User manual for the Gawfolk GF320A 32-inch computer monitor, detailing setup, features, and specifications for this Full HD 1920x1080p curved display with 75Hz refresh rate.</p>
	<p><a href="#">Gawfolk Monitor User Manual: Setup, Operation, and Troubleshooting</a></p> <p>Comprehensive user manual for Gawfolk monitors, covering important precautions, setup instructions, control menu operation, troubleshooting, and FAQs. Learn how to connect, install, and optimize your Gawfolk monitor for the best viewing experience.</p>
	<p><a href="#">Gawfolk GF270C Monitor User Manual</a></p> <p>This user manual provides instructions for the Gawfolk GF270C 27-inch curved gaming monitor, covering setup, operation, precautions, and troubleshooting.</p>
	<p><a href="#">Gawfolk GF240I-GF240D Monitor User Manual</a></p> <p>Comprehensive user manual for the Gawfolk GF240I-GF240D monitor, covering setup, operation, troubleshooting, and specifications. Includes safety information and warranty details.</p>