

Antec Flux Rear

Antec Flux Rear Mid-Tower ATX PC Case Instruction Manual

Model: Flux Rear

Brand: Antec

1. INTRODUCTION

This manual provides detailed instructions for the installation, operation, and maintenance of your Antec Flux Rear Mid-Tower ATX PC Case. Please read this manual thoroughly before beginning assembly to ensure correct setup and optimal performance.

Safety Information: Always disconnect power from all components before installation or maintenance. Handle components with care to prevent damage. Wear an anti-static wrist strap when handling sensitive electronic parts.



Image: The Antec Flux Rear Mid-Tower ATX PC Case, showcasing its tempered glass side panel, mesh front panel, and pre-installed RGB fans.

2. PACKAGE CONTENTS

Verify that all components listed below are present in your package:

- Antec Flux Rear Mid-Tower ATX PC Case
- 2 x 140mm ARGB PWM Fans (Front, pre-installed)
- 2 x 120mm PWM Reverse Fans (PSU Shroud, pre-installed)
- 1 x 140mm ARGB PWM Fan (Rear, pre-installed)

- Accessory Box (screws, cable ties, user manual)
- 13A PSU Extension Cable
- GPU Support Bracket



Image: An exploded view illustrating the various components of the Antec Flux Rear PC case, including the chassis, panels, and fans.

3. SPECIFICATIONS

Feature	Detail
Model Name	Flux Rear
Case Type	Mid Tower
Motherboard Compatibility	ATX, Micro-ATX, ITX (Supports Back-Connect Motherboards)
Dimensions (LxWxH)	18.11 x 18.11 x 9.45 inches (460 x 460 x 240 mm)
Item Weight	18.03 pounds (8.18 kg)
Material	Alloy Steel, Tempered Glass
Pre-installed Fans	2x 140mm ARGB PWM (Front), 2x 120mm PWM Reverse (PSU Shroud), 1x 140mm ARGB PWM (Rear)

Fan Support (Max)	Front: 2x 140mm; Top: 2x 140mm or 3x 120mm; Rear: 1x 140mm or 1x 120mm; PSU Shroud: 2x 120mm
Radiator Support (Max)	Top: Up to 360mm; Rear: Up to 120mm
CPU Cooler Max Height	180 mm
GPU Max Length	400 mm
Power Supply Mounting	Front Mount (Max length without cable: 170mm)
Drive Bays	1x 3.5", 2x 2.5"
I/O Ports	2x USB 3.0, 1x USB-C 10Gbps, Headphone/Mic Combo Jack, Power Button, LED Control Button

4. SETUP AND INSTALLATION

4.1 Preparing the Case

The Antec Flux Rear case features a tool-free panel design for easy access during assembly.

1. To remove the tempered glass side panel, gently pull it open from the rear hinge.
2. The metal right side panel can be removed by sliding it backward and lifting.
3. The front mesh panel can be detached by pulling it from the bottom edge.
4. The top panel can be lifted off after removing any securing screws.



Image: Illustration of the tool-free panel design, demonstrating how to remove the top, left glass, left metal, and front panels for access.

4.2 Motherboard Installation

The case supports ATX, Micro-ATX, and ITX motherboards, including back-connect models.

1. Ensure the correct standoffs are installed for your motherboard size.
2. Carefully place the motherboard into the chassis, aligning it with the standoffs and I/O shield opening.
3. Secure the motherboard with the provided screws.
4. For back-connect motherboards, route all necessary cables through the designated cutouts behind the motherboard tray.

SUPPORT BACK-CONNECT MOTHERBOARDS

Plug in cables from behind to give front a cleaner look and a smoother airflow channel.



**Supported models:*

*ASUS TUF B760M-BTF WIFI D4,
ASUS TX GAMING B760-BTF WIFI,
ASUS DIY-APE B760 REVOLUTION,
MSI B760M PROJECT ZERO,
MSI B650M PROJECT ZERO,
Colorful CVN B760M FROZEN WIFI V20,
and more to come.*

Image: An internal view of the case demonstrating support for back-connect motherboards, with highlighted cable routing paths behind the motherboard tray.

4.3 Power Supply Installation

The Antec Flux Rear features a front-mounted PSU chamber.

1. Install your power supply unit (PSU) into the front chamber.
2. Connect the included 13A extension cable to the PSU and route it to the rear power inlet.
3. Ensure the extension cable is securely connected and routed to avoid interference.

FRONT-MOUNTED PSU CHAMBER & 13A EXTENSION CABLE

The front-mounted PSU chamber improves airflow by freeing up internal space, while the included 13A extension cable ensures stable power delivery for high-wattage PSUs.



Image: A view of the front-mounted PSU chamber and the 13A extension cable, illustrating how the power supply is positioned and connected.

POWER EXTENSION CABLE SETUP

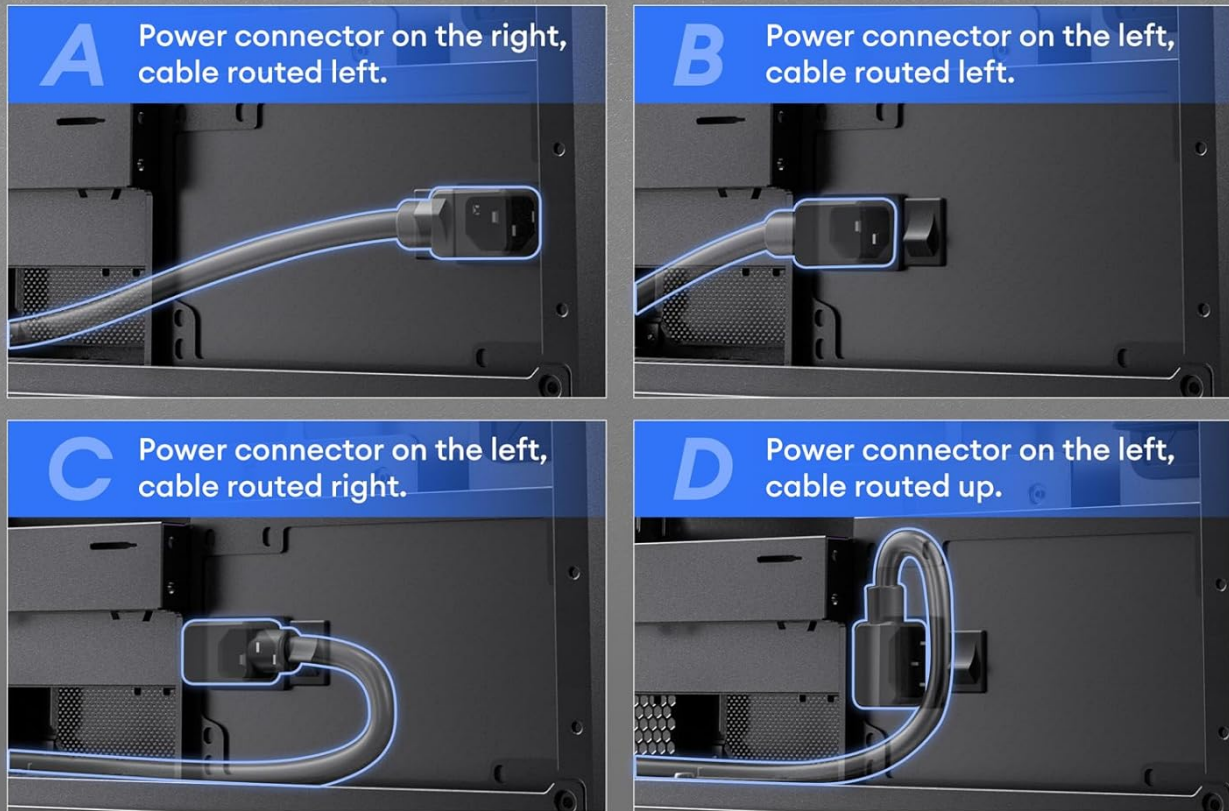


Image: Four distinct diagrams illustrating various methods for routing the power extension cable, depending on the power connector's position and desired cable path.

4.4 Drive Installation (HDD/SSD)

The case provides dedicated mounting points for storage drives.

1. Install 3.5" hard disk drives (HDDs) in the designated bay located at the rear of the case.
2. Install 2.5" solid-state drives (SSDs) in the mounting locations behind the motherboard tray.
3. Secure all drives with the provided screws.

EXTENSIVE INTERIOR

- | | |
|-------------------------|---------------------|
| • Motherboard support | ATX, Micro-ATX, ITX |
| • CPU cooler max height | ≤ 180 mm |
| • GPU max length | ≤ 400 mm |

- | | |
|---------------------------|-------------------------|
| • Power Supply max length | (Without cable) ≤ 170mm |
| • 3.5" | 1 |
| • 2.5" | 2 |



Image: An internal diagram of the PC case, clearly marking the installation areas for the CPU, GPU, Motherboard, SSD, HDD, and Power Supply.

4.5 Graphics Card Installation

Install your graphics card into the appropriate PCIe slot on your motherboard.

1. Remove the necessary PCIe slot covers from the rear of the case.
2. Insert the graphics card firmly into the PCIe slot until it clicks into place.
3. Secure the graphics card with screws.
4. Utilize the built-in GPU support bracket to prevent sag for heavier graphics cards. Adjust the bracket to support the card's weight.

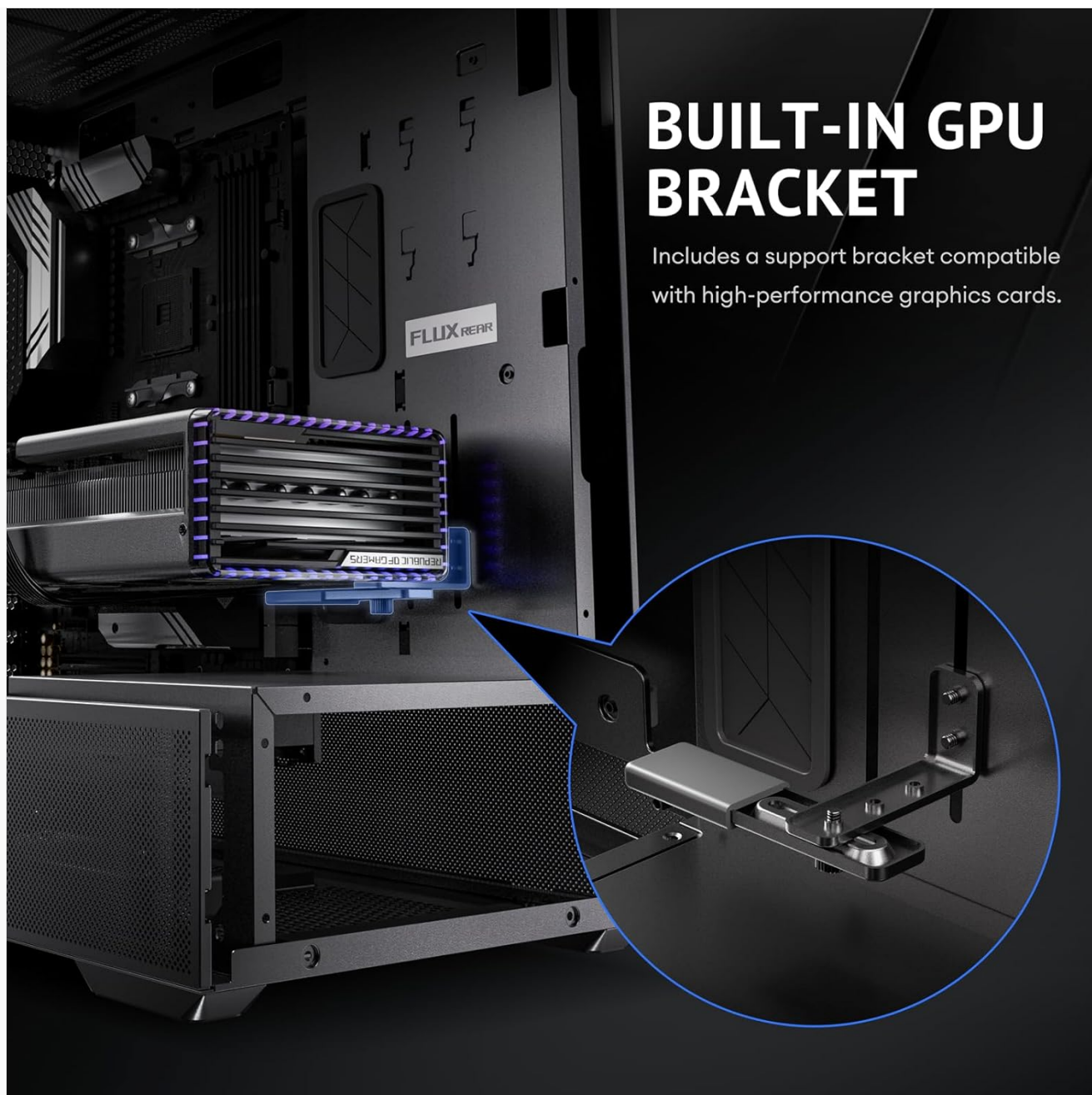


Image: A close-up illustration of the built-in GPU support bracket, demonstrating its function in preventing graphics card sag.

4.6 Fan and Radiator Installation

The case comes with five pre-installed PWM fans and offers extensive support for additional cooling.

1. **Top:** Supports up to 360mm radiators or 2x 140mm / 3x 120mm fans.
2. **Rear:** Supports 1x 140mm or 1x 120mm fan, or a 120mm radiator (with thickness between 55-70mm).
3. **Front:** Supports 2x 140mm fans.
4. **PSU Shroud:** Supports 2x 120mm fans.
5. When installing radiators, ensure proper clearance with other components.

FAN & RADIATOR SUPPORT

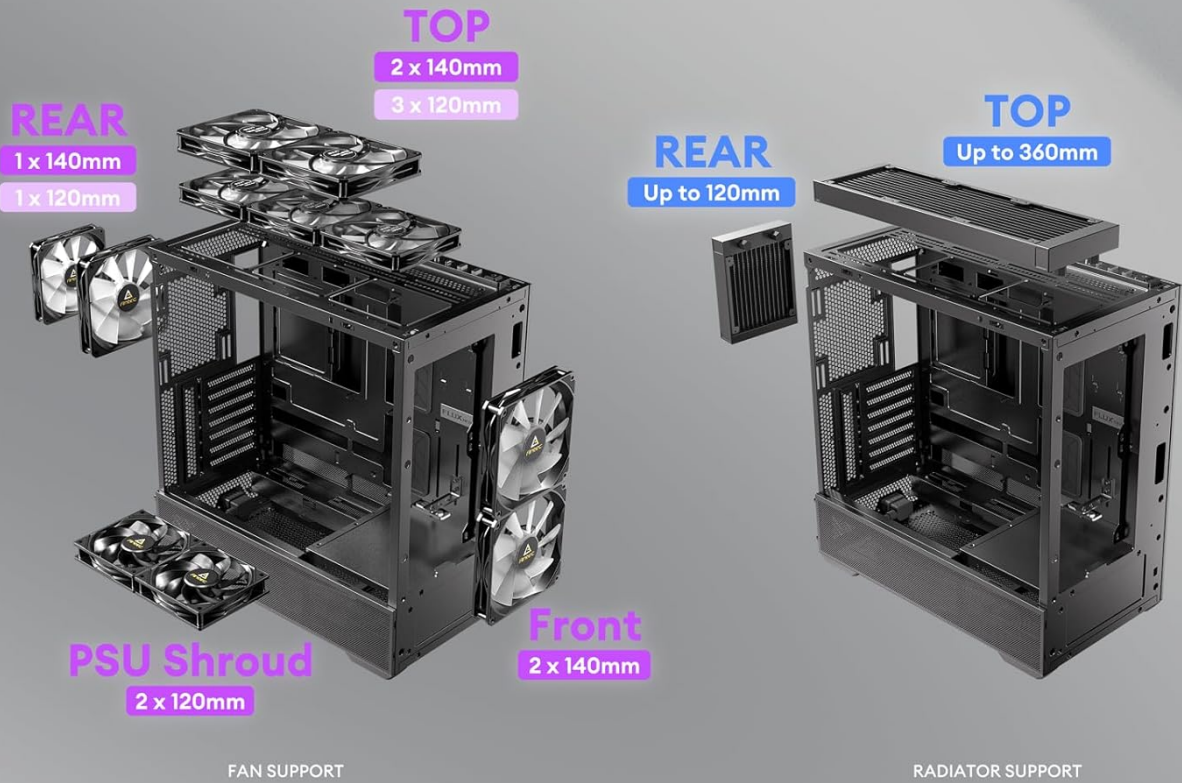


Image: A diagram illustrating the various fan and radiator mounting locations within the PC case, along with their supported sizes.

SUPPORTS 360MM WATER COOLING AT THE TOP

- Supports 140mm rear fan installation with radiator thickness $\leq 55\text{mm}$.
- Supports 120mm rear fan installation with radiator thickness between 55–70mm.



Image: An illustration detailing the installation process for a 360mm radiator and a rear fan in the top section of the PC case.

4.7 Cable Management

The case offers 37mm of space behind the motherboard tray for cable management, equipped with grommets and Velcro straps.

1. Route power and data cables through the grommets and tie-down points.
2. Use the included Velcro straps to bundle and secure cables, ensuring a clean interior and unobstructed airflow.

CABLE MANAGEMENT

Equipped with grommets and Velcro straps for easy, secure cable management, enhancing airflow and creating a cleaner look.



▲ Cable ties x 3 & Grommets x 2

Image: A diagram illustrating the cable management features behind the motherboard tray, including space depth, cable ties, and grommets.

5. OPERATION

5.1 Powering On

After completing all installations and connections, ensure the power cable is securely plugged into the rear of the case and a power outlet. Press the power button located on the top I/O panel to start your system.

5.2 I/O Panel Functions

The top I/O panel provides convenient access to essential ports and controls:

- **Power Button:** Turns the system on/off.
- **USB 3.0 Ports (x2):** For connecting USB 3.0 devices.
- **USB-C 10Gbps Port:** For connecting USB-C devices with high-speed data transfer.
- **Headphone/Mic Combo Jack:** For audio input/output.
- **LED Button:** Controls the lighting effects of the ARGB fans.

I/O PANEL

Dust plugs included.

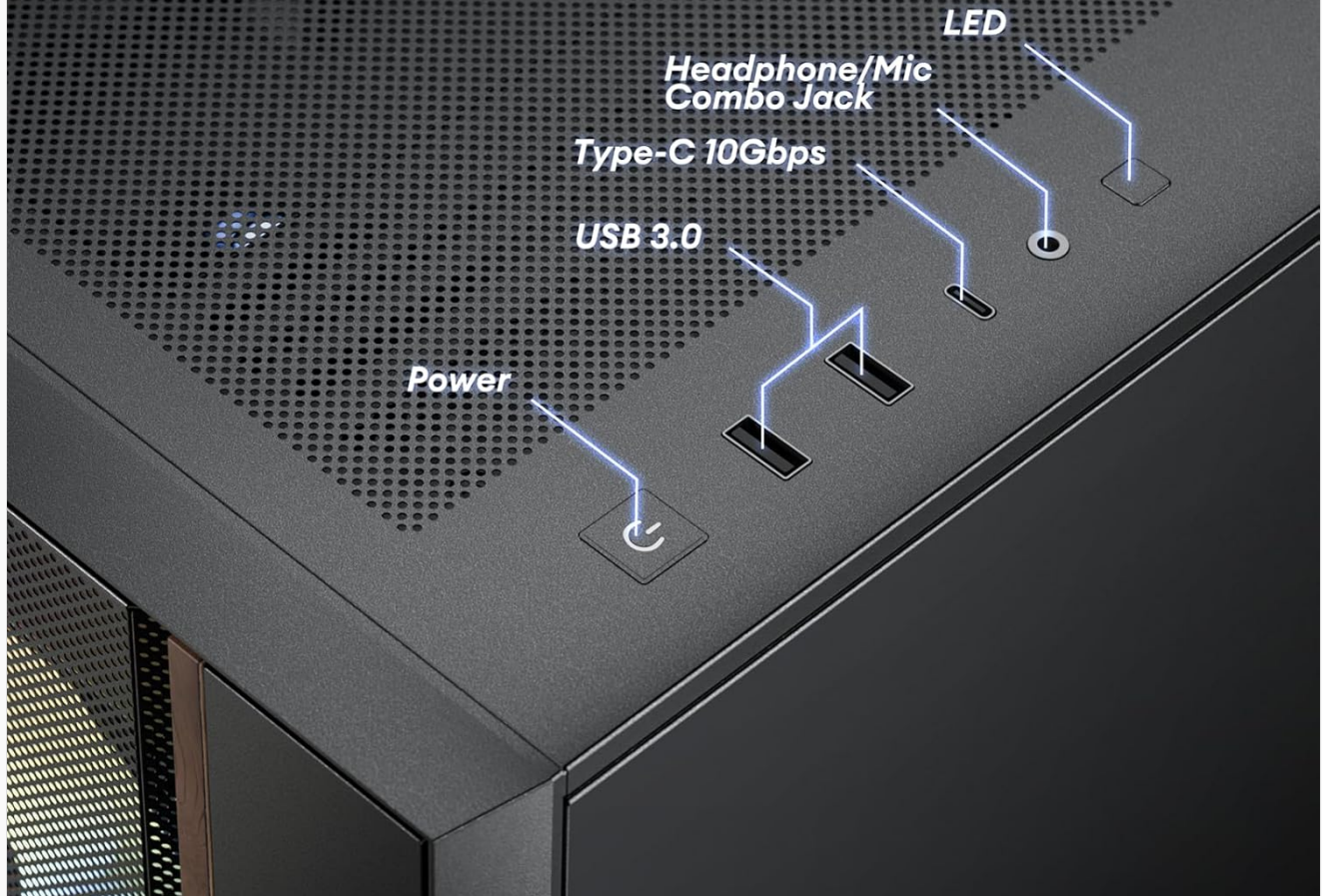


Image: A close-up view of the top I/O panel, detailing the power button, USB 3.0 ports, USB-C 10Gbps port, headphone/mic combo jack, and LED control button.

5.3 Airflow and Cooling

The Antec Flux Rear case is designed with the F-LUX Platform for optimized airflow and cooling performance.

- **F-LUX Platform:** Features a front-mounted PSU chamber that creates an unobstructed airflow path at the bottom of the case, enhancing GPU cooling.
- **Multi-directional Vent Design:** Incorporates extensive air intakes at the bottom, power supply chamber, lower sides, top, and a large-area mesh front panel to create a dedicated airflow channel.
- **Pre-installed Fans:** The five pre-installed PWM fans are strategically placed to facilitate efficient air movement throughout the case.

FLOW LUXURY

F-LUX Platform, abbreviation of Flow Luxury, features ultra case structure design for excellent airflow and 5 fans included, delivering enhanced GPU cooling performance.

▪ *FLUX Platform Patent Number: 11259440*

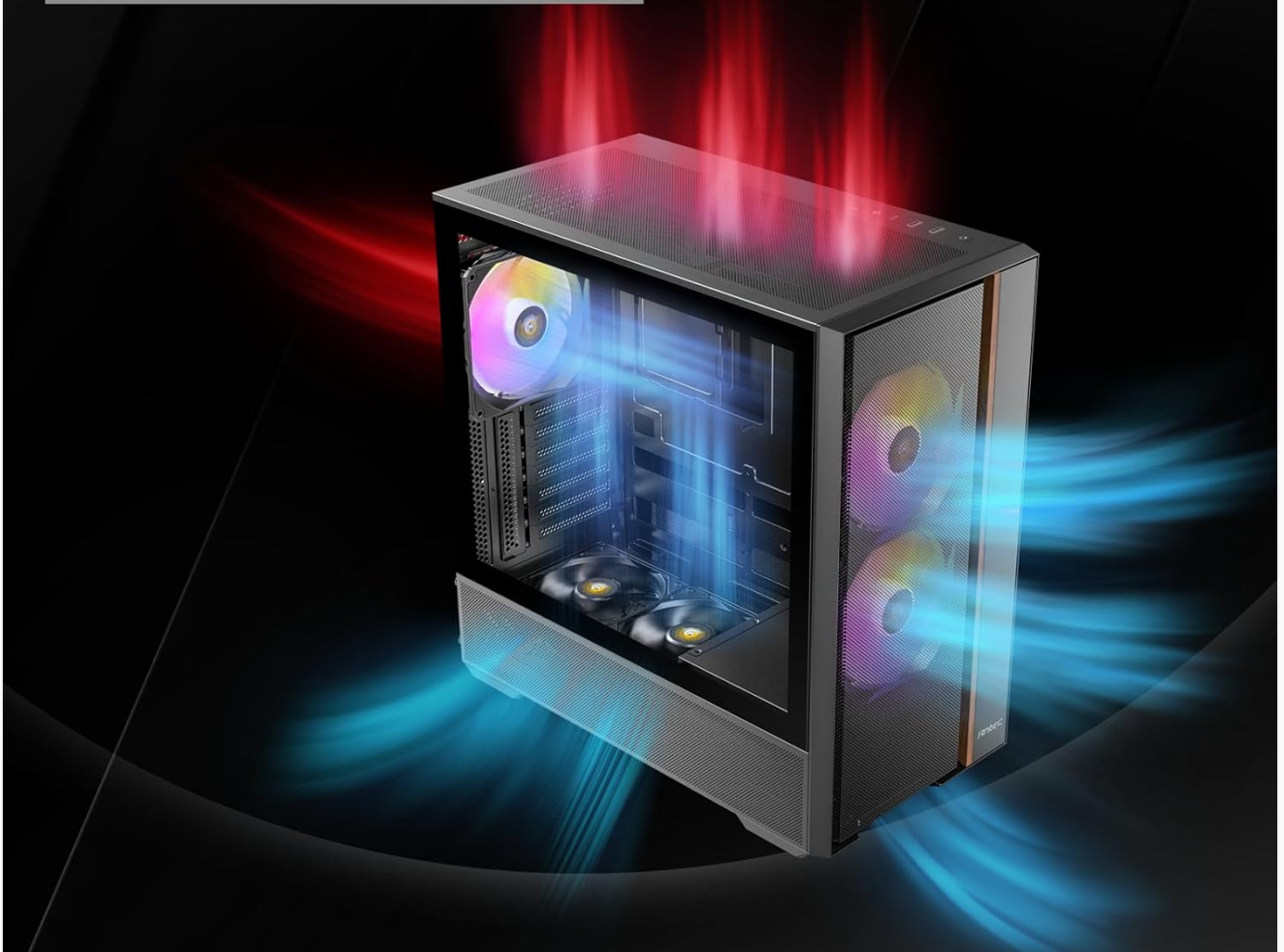


Image: A diagram illustrating the 'Flow Luxury' F-LUX Platform, showing the internal airflow paths designed to enhance GPU cooling.

FLUX AIRFLOW

Multi-directional vent design, featuring extensive air intakes at the bottom, power supply chamber and lower sides, along with top vents and large-area mesh at the front, creating a dedicated Antec Flux airflow channel.

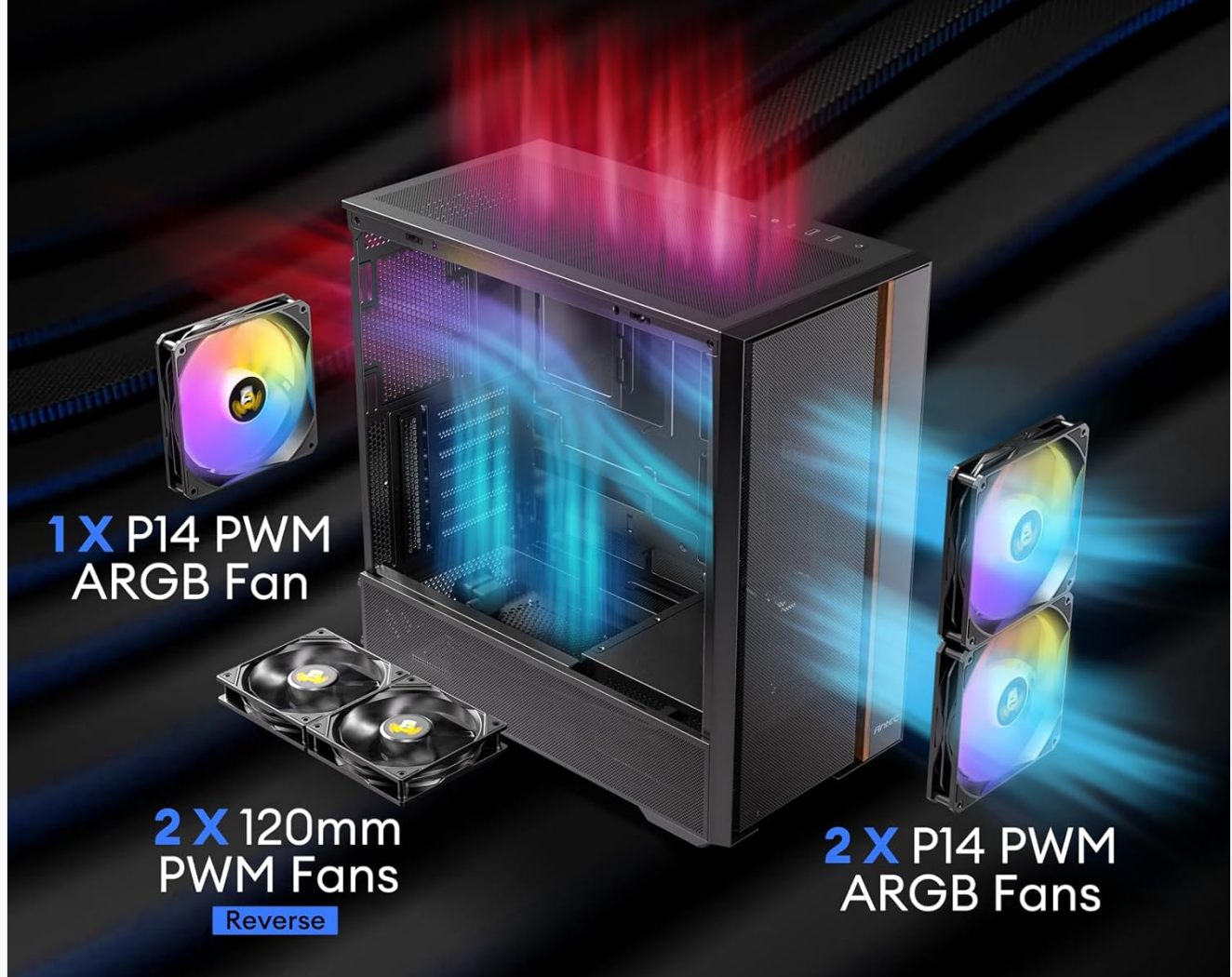
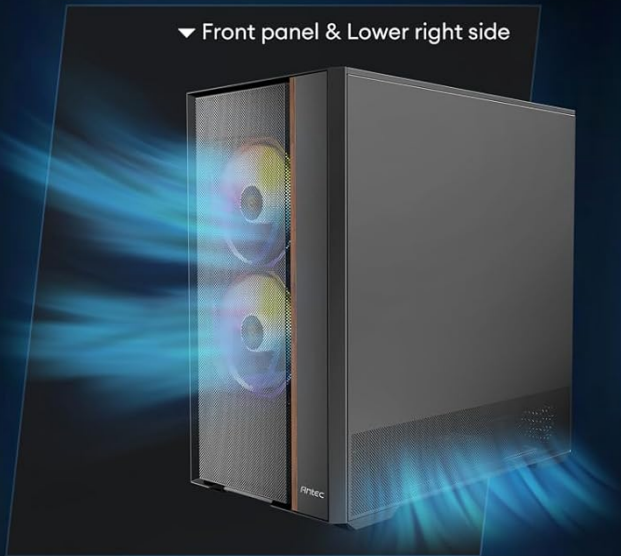


Image: A diagram detailing the 'Flux Airflow' system, indicating the positions and directions of the pre-installed fans within the PC case.

MULTI-DIRECTIONAL VENT DESIGN

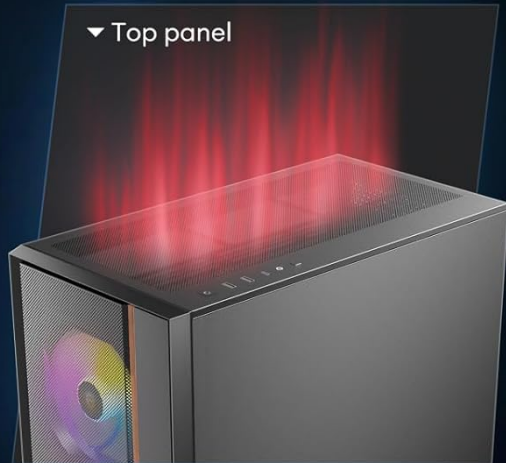
▼ Front panel & Lower right side



▲ Left side of PSU chamber



▼ Top panel



▲ Bottom



Image: Four separate images highlighting the multi-directional vent design, showing air intake points on the front panel, lower right side, left side of the PSU chamber, and the top panel.

BOTTOM AIR INTAKE OPTIMIZATION

The front-mounted PSU chamber preserves an open, spacious airflow path at the bottom that is free of hard drives, enabling efficient, direct cooling of the GPU through reverse fans.

69-102mm
Graphics card space

38mm
Bottom space



Image: A diagram illustrating the optimized bottom air intake, specifically designed for efficient GPU cooling, with measurements for graphics card space and bottom clearance.

6. MAINTENANCE

Regular maintenance helps ensure optimal performance and longevity of your PC case.

- **Dust Filters:** Periodically remove and clean the dust filters located on the front, top, and bottom of the case. Use compressed air or a soft brush to remove accumulated dust.
- **Exterior Cleaning:** Wipe the exterior surfaces with a soft, damp cloth. Avoid abrasive cleaners or solvents that may damage the finish.
- **Interior Cleaning:** With the system powered off and unplugged, use compressed air to clear dust from internal components and fans.

7. TROUBLESHOOTING

If you encounter issues with your PC case, refer to the following common problems and solutions:

- **System Not Powering On:**

- Ensure the PSU is properly installed and connected to the 13A extension cable.
- Verify that the power button cable is correctly connected to the motherboard's front panel header.
- Check if the power outlet is functional.

- **Fans Not Spinning or No RGB:**

- Confirm that fan power cables are securely connected to the motherboard or fan controller.
- Ensure ARGB cables are connected to the motherboard's ARGB header or a compatible controller.
- Press the LED button on the I/O panel to cycle through lighting modes or ensure it's enabled.

- **USB Ports Not Functioning:**

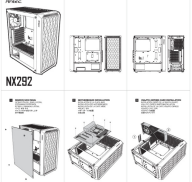
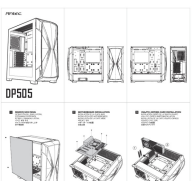
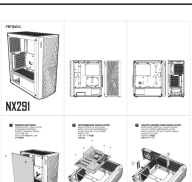
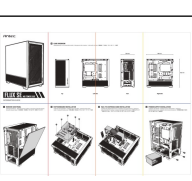
- Check if the USB 3.0 and USB-C cables from the front panel are correctly connected to the motherboard headers.

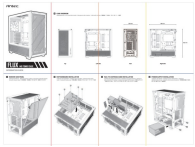
8. WARRANTY AND SUPPORT

Antec products are covered by a limited warranty. For specific warranty terms and conditions, please refer to the warranty card included with your product or visit the official Antec website.

For technical support, product inquiries, or assistance with troubleshooting, please contact Antec customer service through their official website or the contact information provided in your product documentation.

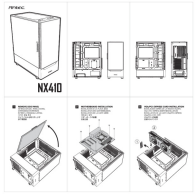
Related Documents - Flux Rear

	Antec NX292 ATX Gaming PC Case - Manual and Overview User manual and overview for the Antec NX292 ATX mid-tower gaming PC case, highlighting its features like fixed RGB fans and tempered glass side panel, along with storage support for HDD and SSD.
	Antec DP505 PC Case - Gaming Mid Tower with EATX Support Antec DP505 is a white gaming mid-tower PC case featuring EATX support, Type-C Gen2, ARGB fans, PWM control, radiator support, GPU bracket, and tempered glass.
	Antec NX291 ATX Tower Gaming Case - User Manual User manual and product overview for the Antec NX291 ATX Tower gaming case, detailing its features such as fixed mode RGB fans, tempered glass side panel, and budget-friendly design.
	Antec Flux SE PC Case User Manual and Overview Comprehensive guide to the Antec Flux SE mid-tower PC case, covering features, specifications, and installation instructions. Learn about its airflow design, cooling support, and build quality for optimal PC performance.



[Antec Flux Mid Tower ATX PC Case User Manual](#)

Comprehensive user manual for the Antec Flux Mid Tower ATX PC Case, detailing features, specifications, installation guide, and maintenance tips for building a high-performance PC.



[Antec NX410 ATX Mid-Tower PC Case - Installation Manual and Overview](#)

A comprehensive guide to the Antec NX410 ATX mid-tower computer case, covering specifications, features, and detailed installation instructions for PC builders. Learn how to assemble your system with this informational manual.