



Manuals.plus /

› CORBOBO /

› CORBOBO LINGBAO K75 Wireless Mechanical Keyboard User Manual

CORBOBO K75

CORBOBO LINGBAO K75 Wireless Mechanical Keyboard User Manual

Model: K75 | Brand: CORBOBO

INTRODUCTION

The CORBOBO LINGBAO K75 is a 75% wireless mechanical keyboard designed for versatility and performance. It features multiple connection modes, hot-swappable switches, RGB backlighting, and a durable design. This manual provides detailed instructions for setting up, operating, and maintaining your keyboard.

LINGBAO K75

Mechanical Gaming Keyboard



BT5.0/2.4G/Wired



16.8million RGB color



10000mAh battery



PBT keycaps



Gasket structure



Hot swappable



Connection of multiple devices



Software driver



Image: Overview of the LINGBAO K75 Mechanical Gaming Keyboard highlighting its key features.

WHAT'S IN THE BOX

- Keyboard x 1
- User Manual
- USB-C Cable x 1
- Keycap Puller
- Extra Switch x 2

SETUP

Connection Modes

The K75 keyboard supports three connection modes: 2.4GHz wireless, Bluetooth (BT), and wired (USB-C). You can seamlessly switch between these modes to connect to up to 5 different devices. The mode can be easily switched using the power button located on the top of the keyboard.

TRI-MODE CONNECTION

Support multiple devices and system



Image: The keyboard demonstrating its tri-mode connection capability with various devices.

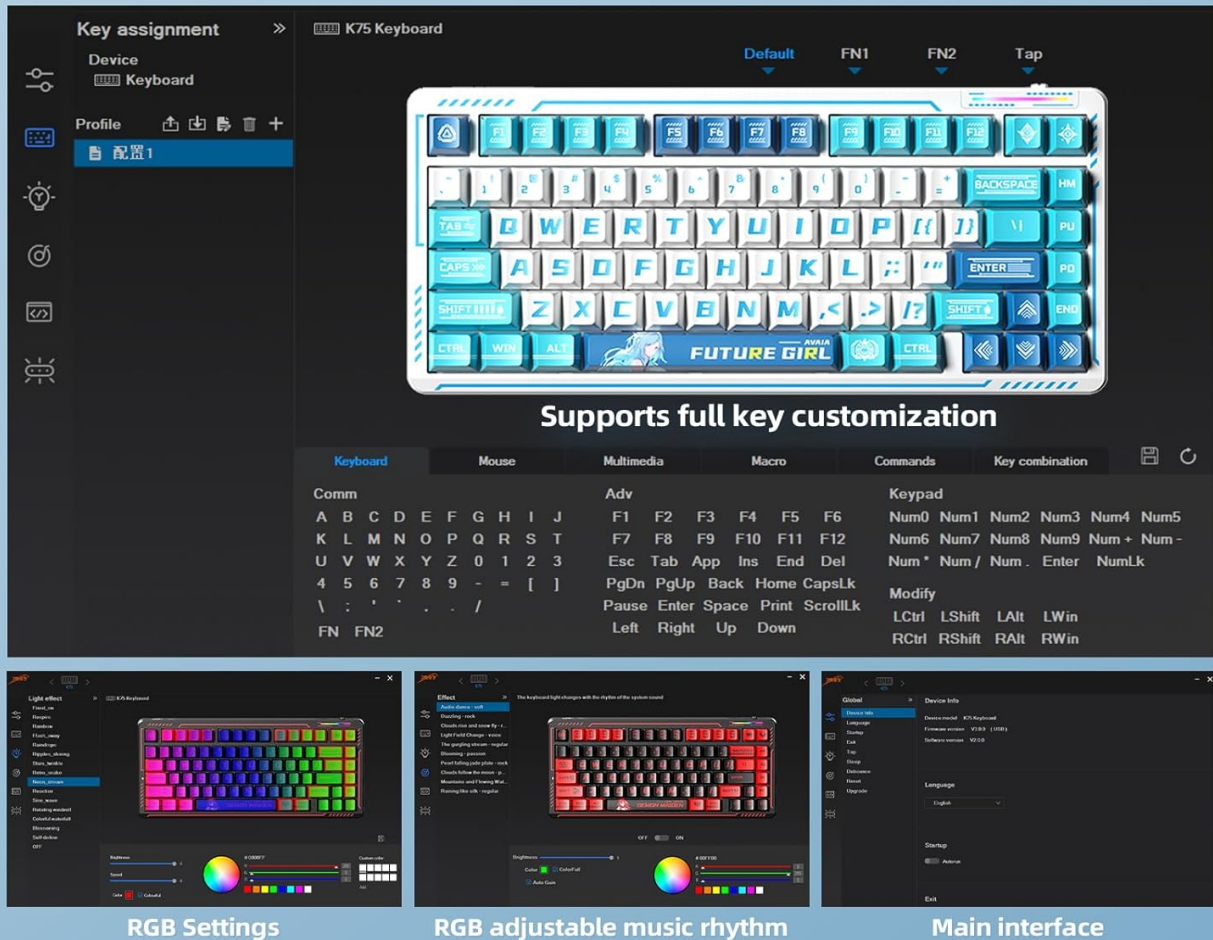
Video: Demonstrates the LINGBAO K75 keyboard's features, including its tri-mode connection, hot-swappable switches, and RGB lighting effects.

Driver Installation

For comprehensive customization, including full-key macro command programming and advanced lighting effects, install the dedicated driver software. The driver can only be set via a wired connection on Windows systems. Download the driver from: bit.ly/m/corbobo.

Multi-Functional Software Driver

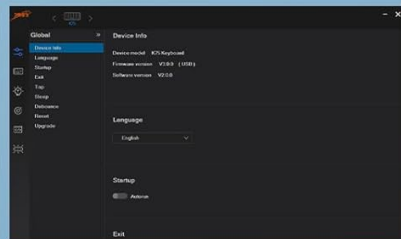
Easily customize all keys and lighting effects



RGB Settings



RGB adjustable music rhythm



Main interface

Software download by(bit.ly/m/corbobo)

Image: The software driver interface for customizing keyboard settings and RGB lighting.

OPERATING INSTRUCTIONS

Key Functions and Customization

The 75% layout retains independent arrow keys. Utilize the programmable driver for full-key macro commands to enhance efficiency in work or gaming. Refer to the driver software for detailed key remapping and macro creation.

RGB Backlighting Control

The keyboard offers 16.8 million RGB colors and various lighting effects. You can adjust the backlight using keyboard shortcuts or through the driver software. A unique music rhythm lighting effect mode allows the keyboard's RGB backlight to synchronize with audio played on your computer.

16.8 Million RGB Backlight

Easily adjust the backlight using shortcuts or software driver



Switching light effect modes



Switching light color



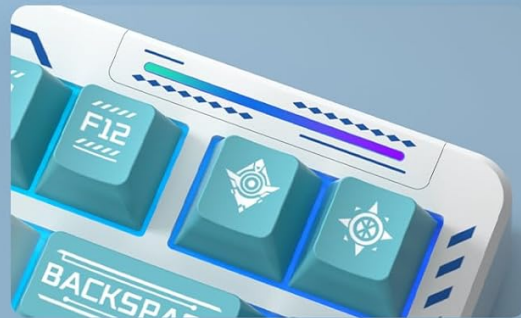
Light speed down/up



Increased/Reduce the brightness



Side light strips



Ambient light bar

Image: The keyboard showcasing its 16.8 million RGB backlight with control shortcuts.



Image: The keyboard's RGB lighting effects dynamically changing with music rhythm.

Hot-Swappable Switches

The keyboard features a hot-swappable base compatible with 3-pin or 5-pin mechanical switches. This allows for easy replacement and customization of switches without soldering, providing a personalized typing experience.

Hot Swappable

Support 3/5-Pin Switches



South-facing RGB

Smokey Purple Switch



Total key stroke: $3.6\pm 0.3\text{mm}$
Conduction pressure: $37\pm 3\text{gf}$
Initial pressure: 31gfMin
Bottom pressure: $50\pm 3\text{gf}$
Conduction stroke: $1.6\pm 0.3\text{mm}$
Mechanical life: **about 60,000,000 times**



PBT keycaps

Image: Illustration of the hot-swappable switch functionality.

MAINTENANCE

Battery Charging

The keyboard is equipped with a 10000mAh battery. For optimal battery health and longevity, charge the keyboard exclusively via a computer's USB port. Avoid using mobile phone fast chargers or overcurrent/overvoltage chargers.

10,000 mAh Large-Capacity Battery

About 40 hours (Default lighting effect)
About 500 hours (Turn off all the lights)

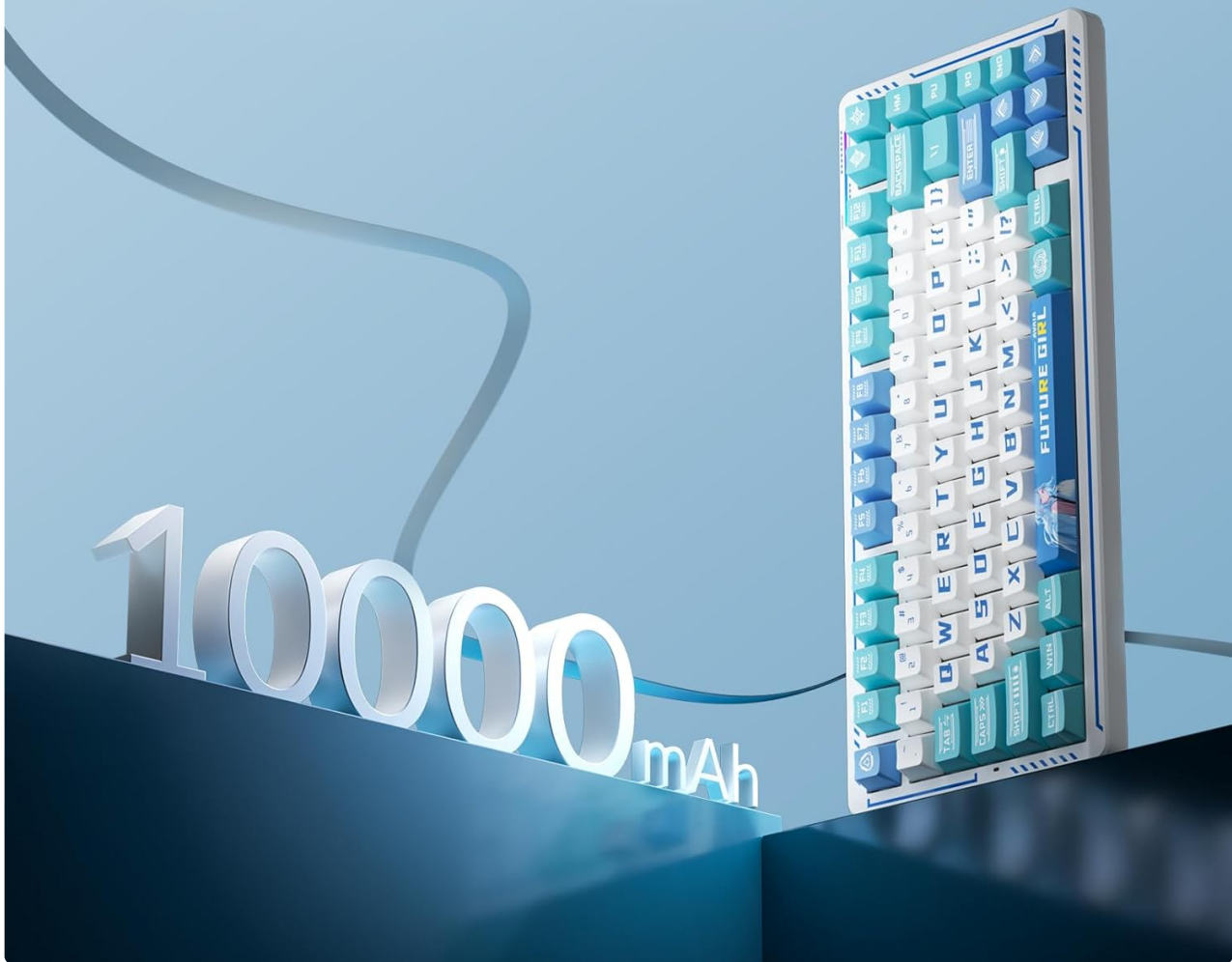


Image: Visual representation of the keyboard's 10000mAh battery capacity.

PBT Keycaps and Gasket Structure

The keyboard features two-color injection-molded PBT keycaps, known for their wear resistance and durability, ensuring characters do not fade. The five-layer gasket structure reduces noise and provides a comfortable typing experience. Regular cleaning with a soft, dry cloth is recommended to maintain the keyboard's appearance.

Gasket Structure

More creamy sound and more comfortable feel

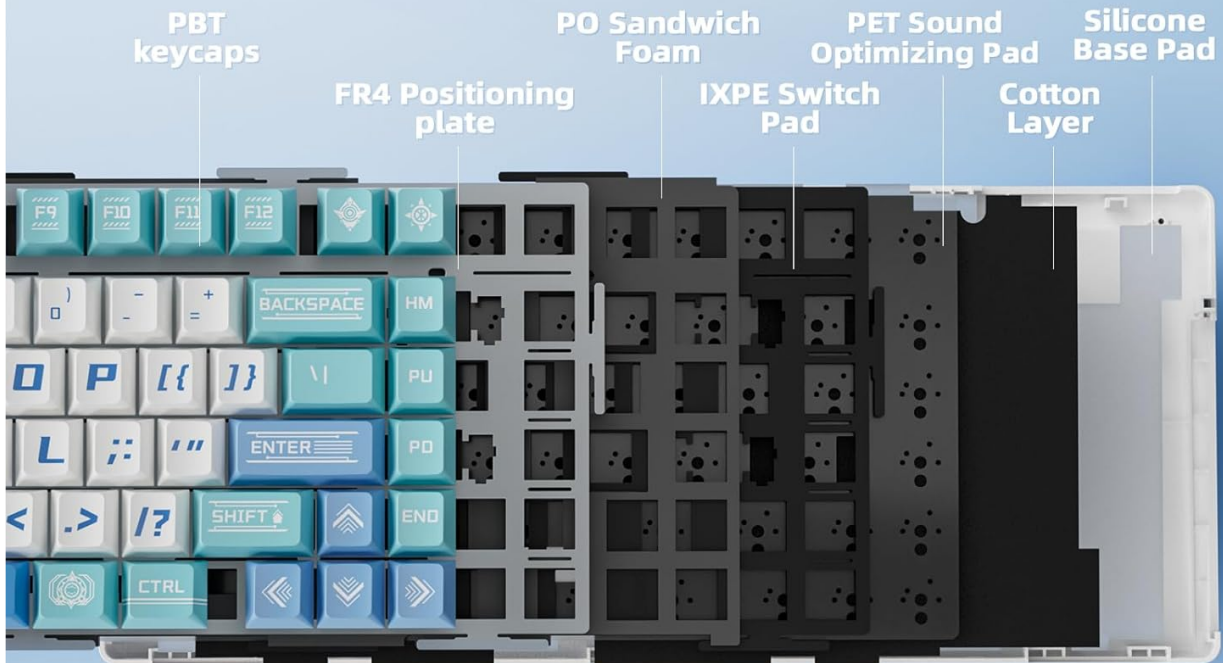


Image: Exploded view of the keyboard's gasket structure and PBT keycaps.

TROUBLESHOOTING

Connectivity Issues

- Ensure the keyboard is charged.
- Verify the correct connection mode (2.4G, BT, or wired) is selected on the keyboard.
- For 2.4G wireless, ensure the USB receiver is securely plugged into your device.
- For Bluetooth, ensure the keyboard is in pairing mode and visible to your device.
- Try restarting your computer or device.

Driver Software Issues

- The driver software is compatible with Windows systems only.
- Ensure the keyboard is connected via USB-C cable when using the driver for customization.
- If issues persist, reinstall the driver software from the official download link.

SPECIFICATIONS

Feature	Detail
Product Dimensions	13.77 x 7.08 x 1.88 inches
Item Weight	3.14 pounds
Manufacturer	CORBOBO
Item Model Number	K75
Batteries	2 Nonstandard Battery batteries required (included)
Compatible Devices	Gaming Console, Laptop, PC, Smartphone
Connectivity Technology	2.4G Wireless, BT5.0, USB-C
Keyboard Description	Mechanical Gaming Keyboard
Special Feature	Anime, Hot-Swappable, Mechanical keyboard, Programmable Keys
Keyboard Backlighting	RGB

WARRANTY AND SUPPORT

For warranty information, technical support, or further assistance, please refer to the official CORBOBO website or contact their customer service directly. Details can typically be found on the product packaging or the manufacturer's website.