

## GuliKit NS55

# GuliKit 720° Adjustable Tension TMR Magnetic Joystick Replacement Kit (Model NS55)

Instruction Manual for PS4 DualShock Controllers

## INTRODUCTION

This manual provides detailed instructions for the installation, operation, and maintenance of the GuliKit 720° Adjustable Tension TMR Magnetic Joystick Replacement Kit (Model NS55) for PS4 DualShock controllers. This kit is designed to address stick drift and enhance control precision through advanced TMR (Tunnel Magnetoresistance) technology and adjustable tension.

**Important Note:** The installation of this product requires desoldering and soldering skills. If you are not experienced with these procedures, professional assistance is recommended to ensure proper installation and prevent damage to your controller.



Image: Overview of the GuliKit 720° Adjustable Tension TMR Magnetic Joystick Replacement Kit, showing the joystick modules, various thumbstick caps, and the adjustment tool.

## KEY FEATURES

- **TMR Magnetic Joystick Technology:** Utilizes contact-less magnetic field sensing to eliminate stick drift, offering enhanced stability, durability, and high precision with ultra-low power consumption.
- **720° Level-less Adjustable Tension:** Allows for precise customization of control force across two full rotations (720°) using an included wrench. The hidden tension mechanism prevents accidental adjustments.
- **Direct Replacement:** Designed as a direct replacement for PS4 DualShock Controllers without requiring circuit modifications.
- **Multiple Thumbstick Caps:** Includes three pairs of joystick caps with varying heights and feels for user preference.

## INSTALLATION GUIDE

This section outlines the steps for replacing your controller's joysticks. Please proceed with caution and ensure you have the necessary tools and skills.

### Required Tools (Not Included):

- Small Phillips head screwdriver
- Prying tool (plastic spudger)
- Soldering iron
- Desoldering pump or wick
- Solder

### Installation Steps:

1. **Disassemble the Controller:** Carefully open your PS4 DualShock controller by removing the necessary screws and gently separating the casing. Disconnect any ribbon cables.
2. **Locate Existing Joysticks:** Identify the current joystick modules on the controller's circuit board.
3. **Desolder Old Joysticks:** Using a soldering iron and desoldering tool, carefully desolder all pins connecting the old joystick modules to the circuit board. Remove the old joysticks.
4. **Install New Joysticks:** Position the GuliKit TMR Magnetic Joystick modules into the vacant spots on the circuit board, ensuring correct orientation.
5. **Solder New Joysticks:** Solder all pins of the new joystick modules securely to the circuit board. Ensure clean solder joints to prevent short circuits.
6. **Reassemble Controller:** Carefully reattach any ribbon cables and reassemble the controller casing. Do not fully tighten screws until testing is complete.

## Direct Replacement Installation

Without Requiring  
Any Circuit Modifications

The Module Kit Is Only For Repair Use  
And Upgrade On Game Controllers



## Low Power

Feature Same As  
Carbon Film  
Joystick



High Durability And  
Long Life By Contactless And  
Wear-free Tmr Sensor



Unique Structural Design Prevents  
Interference From Magnetic Triggers  
On The Joystick



Image: Illustration of the GuliKit joystick module as a direct replacement, highlighting its internal components and compatibility for repair and upgrade.

**Warning: The entire joystick module (joystick & cap) must be replaced as a unit. Attempting to replace only individual components may result in joystick damage or poor centering performance.**

## OPERATION AND ADJUSTMENT

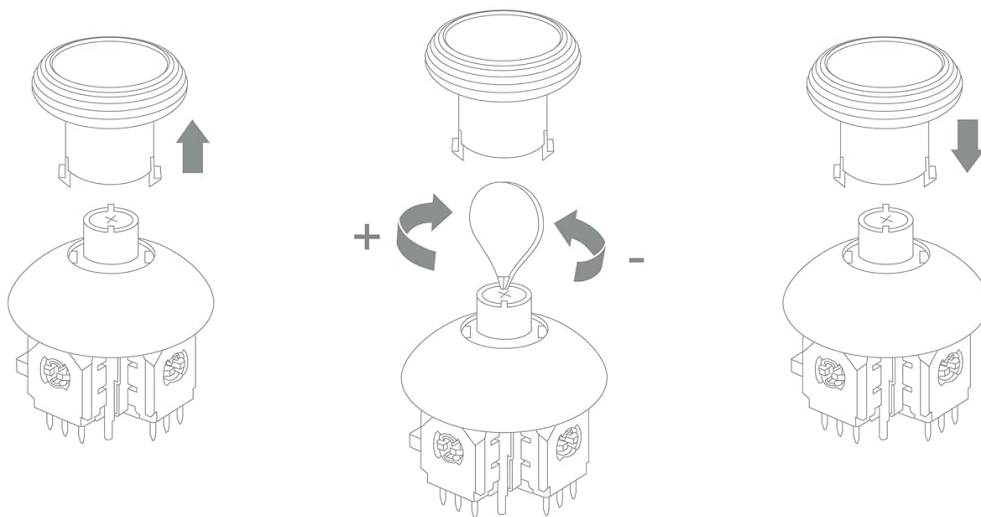
### Adjusting Joystick Tension:

The GuliKit TMR joysticks feature a 720° level-less tension adjustment mechanism, allowing you to fine-tune the stick's resistance.

1. **Remove Thumbstick Cap:** Gently pull the thumbstick cap vertically upward to remove it.
2. **Adjust Tension:** Use the included wrench to turn the screw located under the cap. Turning towards the '+' sign increases tension, while turning towards the '-' sign decreases tension.
3. **Reattach Cap:** Press the thumbstick cap vertically downward until it is securely seated.

## Joystick Tension Adjustment Steps

1. Remove the thumbstick cap by pulling vertically upward.
2. Adjust joystick tension to your preferred level using the included wrench.
3. Reattach the cap by pressing vertically downward until secured.



- Since the joystick models vary across different controllers and have size differences, do not remove and replace just the side components of the joystick. Instead, the entire joystick needs to be replaced as a whole. Attempting to replace only the individual components on the joystick may result in issues like joystick damage or poor centering performance.

Image: Step-by-step diagram showing how to remove the thumbstick cap, use the wrench to adjust tension, and reattach the cap.



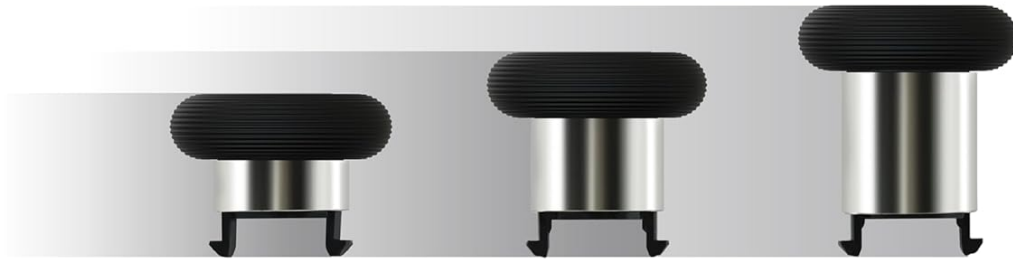
Image: Illustration demonstrating the hidden adjustable tension mechanism, showing how stick force can be varied from -30g to +30g, preventing accidental adjustments during use.

### Using Different Thumbstick Caps:

The kit includes three pairs of caps with different heights and textures. You can also remove the metal ring on the joystick cap for a wider range of movement.

- To change caps: Pull vertically to remove, press vertically to attach.
- Removing the metal ring offers greater flexibility but may increase wear on the stick.

## Includes Three Types Of Joystick Caps With Different Heights And Feels



### You Can Remove The Metal Ring On The Joystick Cap To Use

The Joystick Will Have  
A Wider Range Of Movement



- If You Use A Joystick Cap Without A Metal Ring, It Will Increase The Wear And Tear On The Stick.

Image: Visual representation of the three included joystick cap types with different heights, and a diagram illustrating how the metal ring can be removed from a cap for increased range of motion.

### Joystick Calibration:

After replacing the joysticks, calibration is required to ensure optimal performance and accurate input. Follow the instructions below for PS4 DualShock controllers:

- For PS4 DualShock controllers, after replacing the joysticks, use the calibration tool available on the GuliKit website ([test.gulikit.com](https://test.gulikit.com)) to calibrate the joysticks according to the provided instructions.

**After replacing the joysticks  
run joystick calibration as the ways below:**

(Before calibration and testing, please install the controller cases and screws)

- For Switch Pro controllers, after replacing the joysticks, go to the Switch console's Settings -> Controllers and Sensors -> Calibrate Joysticks, and follow the instructions to calibrate the joysticks.
- For PS4 DualShock, PS5 DualSense and PS5 DualSense Edge controllers, after replacing the joysticks, use the tool "<https://test.gulikit.com>" to calibrate the joysticks according to the instructions.
- For Xbox Series controllers, after replacing the joysticks, go to the XBOX console or download the "XBOX Accessories" software from the Microsoft Store on PC, then find the "Recalibrate" option and follow the instructions to calibrate the joysticks.



Product Name : 720° Tension Adjustable TMR Joystick

Brand : GuliKit

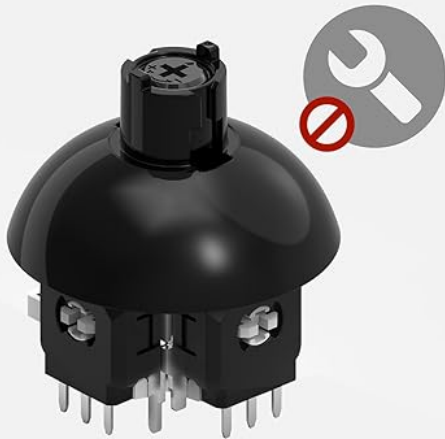
Package Includes : Joystick x 2, Joystick Cap x 6

Model : NS55

Image: A graphic detailing the calibration process for various controllers, specifically mentioning the GuliKit website tool for PS4 DualShock controllers.

## MAINTENANCE

- **Cleaning:** Keep the joystick modules and caps free from dust and debris. Use a soft, dry cloth for cleaning.
- **Metal Ring Usage:** Be aware that using the joystick cap without the metal ring, while offering a wider range of movement, may increase wear and tear on the stick over time.
- **Avoid Disassembly:** The dome part for tension adjustment under the joystick cap is integrated with the joystick component and cannot be separated. Do not attempt to disassemble this part as it will damage the entire joystick.



Please note that the dome part for the tension adjustment under the joystick cap is integrated with the joystick component and cannot be separated, so do not attempt to disassemble this part as it will damage the whole joystick.

Image: A visual warning indicating that the dome part of the joystick, which contains the tension adjustment mechanism, should not be disassembled as it is integrated and attempting to separate it will cause damage.

## TROUBLESHOOTING

- **Stick Drift:** The TMR technology is designed to eliminate stick drift. If drift occurs after installation, ensure proper soldering and perform joystick calibration as described in the 'Operation and Adjustment' section.
- **Poor Centering/Functionality:** This can occur if the entire joystick module was not replaced as a unit, or if individual components were attempted to be replaced. Ensure the full module is correctly installed. Also, verify proper soldering.
- **Tension Mechanism Issues:** If the tension mechanism does not function as expected or the stick does not return to center, re-check the tension adjustment screw. Ensure the dome part of the joystick was not tampered with or disassembled.
- **Calibration Failure:** If the calibration tool does not work, ensure your controller is properly connected and recognized. Refer to the GuliKit website for specific calibration tool instructions and system requirements.

## SPECIFICATIONS

Model Number	NS55
Technology	TMR (Tunnel Magnetoresistance)
Compatibility	PS4 DualShock Controllers
Tension Adjustment	720° Level-less
Item Weight	1.44 ounces (approx. 40.8 grams)
Package Dimensions	3.7 x 3.66 x 1.14 inches (approx. 9.4 x 9.3 x 2.9 cm)

## WARRANTY INFORMATION

Specific warranty details for the GuliKit 720° Adjustable Tension TMR Magnetic Joystick Replacement Kit are not provided in the product information. Please refer to the official GuliKit website or contact their customer support for warranty terms and conditions.

## SUPPORT AND CONTACT

For further assistance, technical support, or to access the joystick calibration tool, please visit the official GuliKit website:

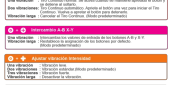
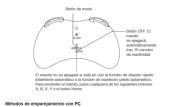
**GuliKit Official Website:** [www.gulikit.com](http://www.gulikit.com)

**Calibration Tool:** [test.gulikit.com](http://test.gulikit.com)

When contacting support, please have your product model (NS55) and purchase information ready.



Discover the full capabilities of the GuliKit NS09 T controller with this comprehensive user manual. Learn about seamless pairing across PC, Switch, Android, and iOS devices, advanced calibration techniques for joysticks and gyroscope, and unique features like Auto Pilot Gaming (APG), motion aim assist, and customizable vibration and sensitivity settings. Optimize your gaming experience with detailed instructions and troubleshooting tips.



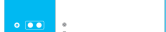
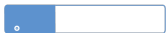
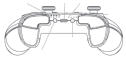
## [Manual de Usuario GuliKit Elves 2 Pro: Guía Completa y Configuración](#)

Descubre cómo configurar y usar tu mando GuliKit Elves 2 Pro (NS59). Incluye guías de emparejamiento Bluetooth y por cable para PC, Switch, Android, iOS y macOS, además de funciones avanzadas como APG, calibración y ajustes de vibración.





Easy pairing mode!



## [GuliKit KingKong 2 PRO Controller: Guía de Usuario y Funciones Avanzadas](#)

Descubre cómo emparejar, calibrar y utilizar todas las funciones avanzadas del controlador GuliKit KingKong 2 PRO, incluyendo APG, Turbo Shooting y Asistencia de Movimiento, para PC, Nintendo Switch, Android y iOS.



## GuliKit Goku Wireless Controller Adapter Instructions

NS26



### Use on Windows PC:

1. Plug GuliKit wireless controller adapter into USB A port on your computer. (It is better to use USB A port on back panel if it is desktop computer.)
2. Hold the pairing button to turn into pairing mode with flashing led.
3. Set GuliKit controller to "Windows" mode hold the pairing button to turn it into pairing mode with flowing led.

\* Ways of setting pairing mode on other controllers.

The adapter gets paired to controller when leds are steady on. Then you are good to use the controller.

Note: The adapter supports auto pairing to your controller on the PC next time even when you switch back from other consoles.

### Switch Pro controller pairing guide :



Pairing button, holding 2 seconds to have scrolling led for pairing.

### Xbox controller pairing guide:



Pairing button, holding 2 seconds to have scrolling led for pairing.

### PS4 controller pairing guide:

Turn controller power off, hold Share and PS buttons to set into pairing mode with flashing led.



### Controller Button Mapping on PC:



### Use on Xbox One, Xbox Series X, Xbox Series S consoles:

1. Use a cable to connect your original Xbox controller to GuliKit adapter. (Micro USB to USB A cable for Xbox One controller, USB C to USB A cable for Xbox Series X/S controller. (cable is not included.)
2. Next plug the adapter into USB A port on your console. Note: Do not reverse step 1 and step 2.
3. Hold the pairing button on adapter to turn into pairing mode with flashing led.
4. Set GuliKit controller to "Windows" mode hold the pairing button to turn it into pairing mode with flowing led.

\* Ways of setting pairing mode on other controllers.

The adapter gets paired to controller when leds are steady on. Then you are good to use the controller.

Note:

1. Do not unplug your original controller off the adapter, or your controller can not work.
2. The adapter supports auto pairing to your controller on this console next time even when you switch back from other consoles.

### Controller Button Mapping on Xbox:



### Use on PS4 console:

1. Use a Micro USB to USB A cable (not included) to connect your original PS4 controller DualShock to GuliKit adapter.
2. Next plug the adapter into USB A port on PS4 console.

Note: Do not reverse step 1 and step 2.

## [GuliKit Goku Wireless Controller Adapter NS26 User Guide and Instructions](#)

Comprehensive guide for the GuliKit Goku Wireless Controller Adapter (NS26), detailing setup and button mapping for Windows PC, Xbox, PS4, and Nintendo Switch consoles. Includes FCC and IC compliance information.

3. Hold the pairing button on adapter to turn into pairing mode with flashing led.

4. Set GuliKit controller to "Nintendo Switch" mode, hold the pairing button to turn it into pairing mode with flowing led.

**\* Ways of setting pairing mode on other controllers.**  
The adapter gets paired to controller when leds are steady on. Then you are good to use the controller.

**Note:**

1. Do not unplug your original controller off the adapter, or your controller can not work.
2. The adapter supports auto pairing to your controller on this console next time even when you switch back from other consoles.

**Controller Button Mapping on PS4:**

**Use on Switch:**

1. Plug GuliKit controller adapter into the USB port on Switch dock.
2. Press and hold the pairing button on the adapter until you see flashing LED to get the adapter into pairing mode.
3. Turn your controller into pairing mode and get paired to the adapter.

**\* Ways of setting pairing mode on other controllers.**  
The adapter gets paired to controller when leds are steady on. Then you are good to use the controller.

**Note:**

1. Do not unplug your original controller off the adapter, or your controller can not work.
2. The adapter supports auto pairing to your controller on this console next time even when you switch back from other consoles.

**Controller Button Mapping on Switch:**

Alien, Xbox One, Xbox Series, Nintendo, © are registered trademarks of their respective owners.  
PS, PS4, & are registered trademarks of SONY Inc.  
Nintendo, Switch, & are registered trademarks of Nintendo Inc.

### [GuliKit KK3 MAX Controller: Setup, Pairing, and Function Guide](#)

Learn how to pair and use your GuliKit KK3 MAX controller with PC, Switch, Android, iOS, and macOS. This guide covers calibration, custom settings, APG function, and troubleshooting.