

## Kaelidra XF-001-K

# Kaelidra King Size Floating Bed Frame with Smart LED Lights

Model: XF-001-K

Brand: Kaelidra

## INTRODUCTION

Thank you for choosing the Kaelidra King Size Floating Bed Frame with Smart LED Lights. This innovative bed frame is designed to provide a modern aesthetic with practical features, including integrated LED lighting and robust support for your mattress. This manual provides detailed instructions for assembly, operation, maintenance, and troubleshooting to ensure a seamless experience.

Please read this manual thoroughly before assembly and use. Keep it for future reference.

## SAFETY INFORMATION

- Do not exceed the maximum weight capacity of **1,000 lbs.**
- Be cautious of sharp edges and pinch points, especially around the hidden legs and LED light strip during assembly and use.
- Always follow the assembly instructions carefully to prevent instability or collapse.
- Ensure all bolts and connections are securely tightened before placing a mattress on the frame.
- Keep children and pets away from the assembly area to prevent accidents.

## PACKAGE CONTENTS

Please verify that all components are present before beginning assembly. If any parts are missing or damaged, please contact customer service.

- Floating Bed Frame King Size \*1 (disassembled components)
- Smart LED Light Strip with remote control

- Power outlet/USB hub (if included in your model variant)
- Assembly tools (Allen wrench)
- Screws, bolts, and plastic caps
- Adhesive and zip ties for LED strip
- Instruction Manual

## ASSEMBLY INSTRUCTIONS

---

For a visual guide, please refer to the official installation video below.

Your browser does not support the video tag.

**Video:** Floating Bed Frame Installation Steps and Tutorials. This video demonstrates the step-by-step assembly process for the Kaelidra floating bed frame, including how to connect the frame pieces and install the LED lights.

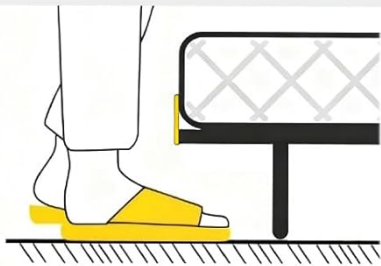
1. **Unpack and Identify Parts:** Carefully unpack all components from the box. Lay them out on a clean, soft surface. Each part is labeled with a number for easy identification. Refer to the parts list in your manual to ensure all pieces are present.
2. **Assemble Main Frame Sections:** Begin by connecting the numbered frame pieces as indicated in the instruction manual. Use the provided bolts and Allen wrench to secure connections. Ensure all connections are snug but do not overtighten until the entire frame is assembled.
3. **Connect Frame Sections:** Join the assembled main frame sections together to form the full bed frame. Pay attention to the orientation of each piece to ensure proper alignment.
4. **Install Mattress Anti-Slip Brackets:** Attach the built-in mattress anti-slip brackets (if applicable) to the designated areas on the frame. These brackets help keep your mattress securely in place.
5. **Attach LED Light Strip:** Carefully peel the adhesive backing from the LED light strip. Adhere the strip along the inner edge of the bed frame, ensuring it is evenly placed. Use the provided zip ties to further secure the LED strip, especially around corners or areas where it might detach. The LED light extends along three sides of the bed, as one side is typically placed against a wall.
6. **Install Power Outlet/USB Hub:** If your model includes a power outlet/USB hub, attach it to the designated mounting point on the side of the bed frame using the provided screws. Plug the LED light strip into the USB port on the hub.
7. **Final Tightening:** Once all components are in place and aligned, go back and securely tighten all bolts. Do not overtighten to avoid damaging the metal.



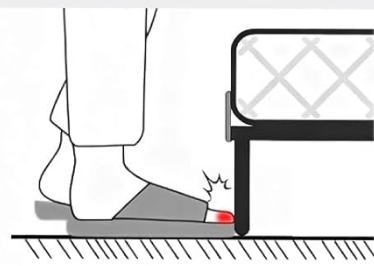
**Image:** Overview of the Kaelidra King Size Floating Bed Frame with Smart LED Lights, showing its dimensions (80"L x 76"W x 5.9"H) and the placement of the LED strip and power cord.



## HIDDEN LEG DESIGN

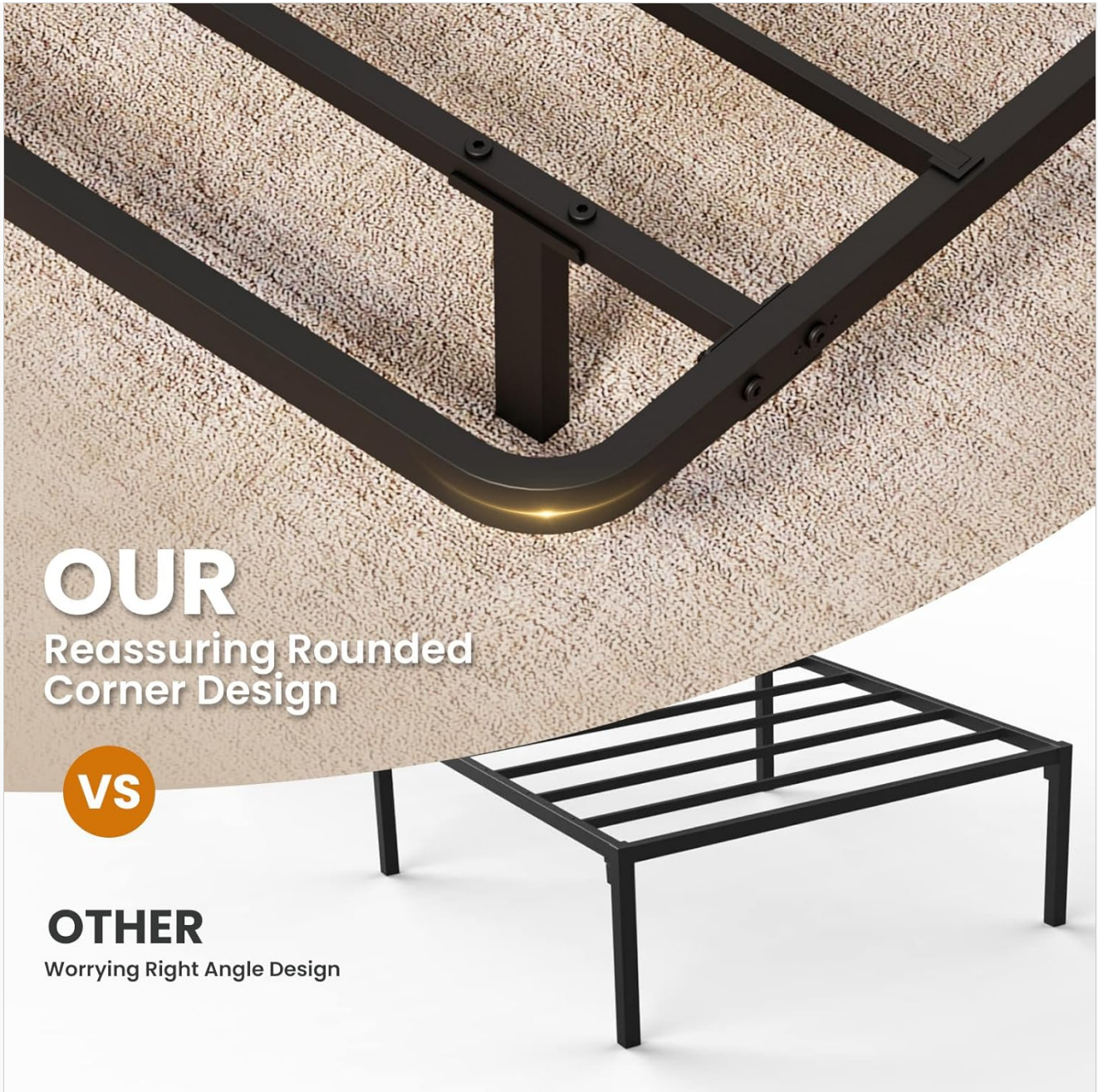


Floating Bed



Ordinary Bed

**Image:** A visual representation of the hidden leg design, creating the floating effect, and contrasting it with an ordinary bed frame.



**OUR**

Reassuring Rounded  
Corner Design



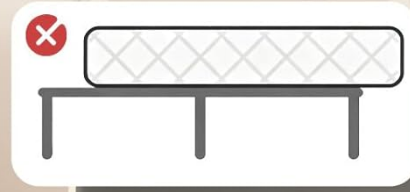
**OTHER**

Worrying Right Angle Design

**Image:** Close-up of the built-in mattress anti-slip bracket, designed to ensure stable placement of the mattress and improve sleep quality.

# BUILT IN MATTRESS ANTI SLIP BRACKET

Ensure stable placement of the mattress to improve your sleep quality.



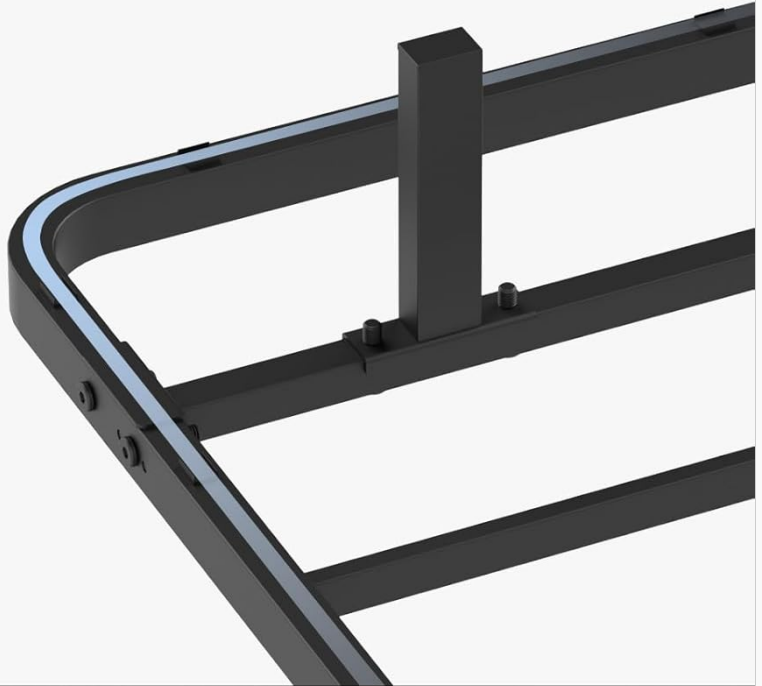
**Image:** Illustration showing the use of adhesive and zip ties to securely fix the LED strip to the bed frame, highlighting a common issue with other frames using only adhesive.

## Our

Provide adhesive and zip ties to securely fix the LED strip to the frame.

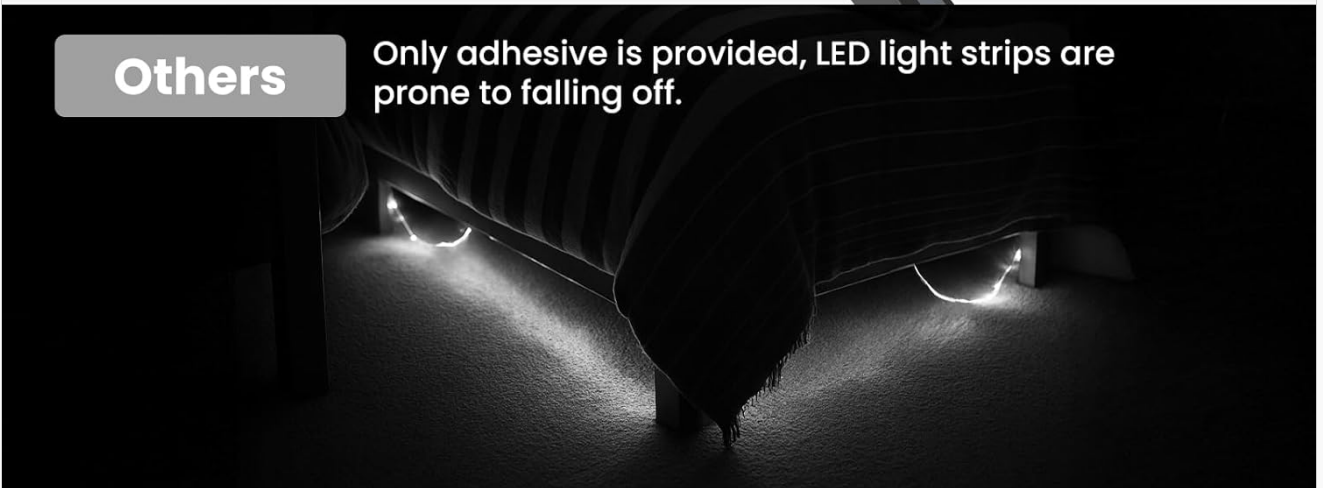


Tip: Before pasting, please tear off the protective film on the back adhesive of the LED light strip.



## Others

Only adhesive is provided, LED light strips are prone to falling off.



**Image:** Detail of the rounded corner design, emphasizing increased safety and enhanced aesthetics by reducing the risk of injury from sharp edges.

## OPERATING INSTRUCTIONS (SMART LED LIGHTS)

The integrated Smart LED Lights can be controlled via a remote or a dedicated app (if applicable to your model). Ensure the LED strip is properly connected to the power source.



## SMART RGBW LED LIGHT STRIP



Adjust  
Brightness



1600w  
Color



Timer  
Mode



Microphone  
Mode



Dynamic  
Preset



Tip: Scan the QR code of the LED light strip control box to obtain the APP.



**Image:** Visual guide to the Smart RGBW LED Light Strip features, including brightness adjustment, 16 million color options, timer mode, microphone mode, and dynamic presets, controllable via remote or app.

- **Power On/Off:** Use the power button on the remote control or within the app to turn the LED lights on or off.
- **Color Selection:** Choose from 16 million color options using the color wheel in the app or the preset color buttons on the remote.
- **Brightness Adjustment:** Increase or decrease the light intensity using the brightness controls on the remote or app.
- **Dynamic Modes:** Explore various dynamic presets for different lighting effects.
- **Music Sync Mode:** Activate music sync mode to have the lights react to sound and music.
- **Timer Settings:** Set a timer for the lights to automatically turn off.
- **Voice Control:** If supported by your smart home system, the lights may be controlled via voice commands.

## MAINTENANCE

- **Cleaning the Frame:** Wipe the metal frame with a soft, damp cloth. Avoid abrasive cleaners or harsh

chemicals that could damage the finish.

- **LED Light Care:** The LED strip is durable, but avoid excessive bending or pulling. If cleaning is necessary, gently wipe with a dry, soft cloth. Do not immerse in water.
- **Regular Inspection:** Periodically check all bolts and connections to ensure they remain tight. Retighten if necessary.
- **Under-Bed Clearance:** The 5.9-inch under-bed clearance allows for easy cleaning underneath the frame.

## TROUBLESHOOTING

---

- **LED Lights Not Working:**
  - Ensure the LED strip is securely plugged into the USB port and the power adapter is connected to a working electrical outlet.
  - Check the remote control battery.
  - Verify that the LED strip is not damaged or kinked.
- **Bed Frame is Noisy/Squeaky:**
  - Tighten all bolts and screws on the frame.
  - Ensure the mattress is properly seated on the frame and not causing friction.
- **Mattress Sliding:**
  - Confirm that the built-in mattress anti-slip brackets are correctly installed and engaged.

## SPECIFICATIONS

---

<b>Size</b>	King
<b>Material</b>	Metal
<b>Product Dimensions</b>	80"L x 76"W x 5.9"H
<b>Style</b>	Modern, Floating
<b>Special Feature</b>	Smart LED Lighting (RGBW, App/Remote Control, Music Sync, Voice Control, Timer)
<b>Included Components</b>	Floating Bed Frame King Size, LED Light Strip, Remote, Assembly Tools
<b>Maximum Weight Recommendation</b>	1000 Pounds
<b>Under-Bed Clearance</b>	5.9 inches
<b>Assembly Required</b>	Yes

## WARRANTY AND SUPPORT

---

For warranty information, product support, or to report missing/damaged parts, please contact Kaelidra customer service directly. Refer to your purchase documentation for specific contact details or visit the official Kaelidra website.

