

Manuals.plus /

› NEEWER /

› NEEWER NS02 9.84ft/3m Smart AI RGB Flexible LED Strip Light User Manual

## NEEWER NS02

# NEEWER NS02 9.84ft/3m Smart AI RGB Flexible LED Strip Light User Manual

MODEL: NS02

## 1. Introduction

The NEEWER NS02 Smart AI RGB Flexible LED Strip Light is designed to provide dynamic and customizable lighting for various indoor environments. This flexible neon rope light features advanced RGB LEDs with segmented control, offering a wide range of colors and effects. It supports wireless app control, smart voice commands via Google Assistant and Alexa, dynamic scenes, music synchronization, and AI-powered lighting design. Its durable silicone construction allows for versatile shaping and installation.

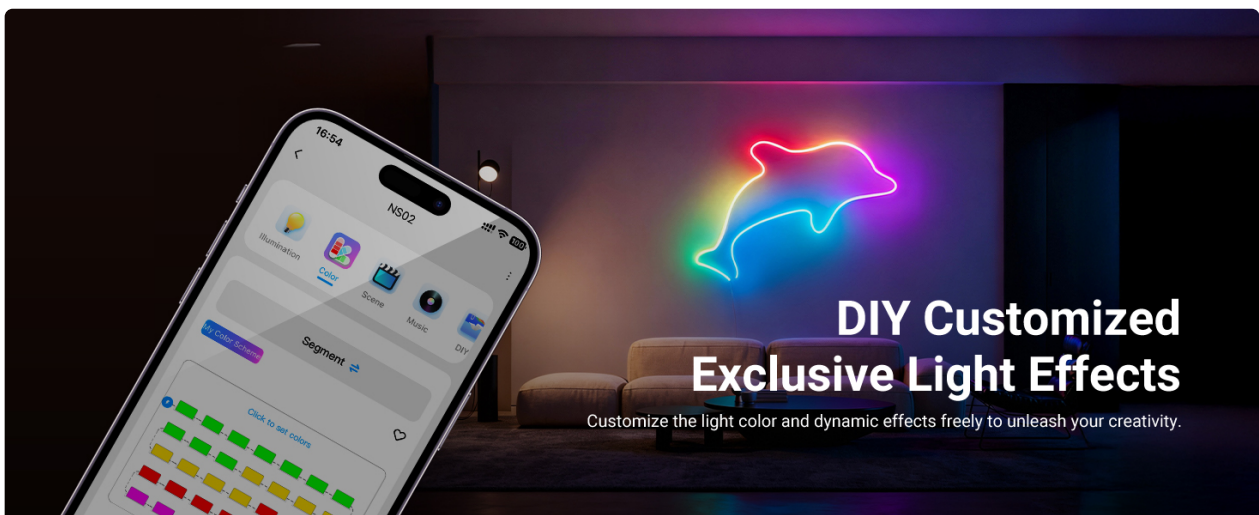


Image: The NEEWER NS02 LED Strip Light showcasing its soft, flexible, and versatile design, allowing it to be shaped into various forms for creative lighting.

### Key Features:

- **Advanced RGB LEDs with Segmented Control:** Each meter includes 84 high-performance RGB LEDs and 14 control points, enabling individual brightness and color adjustments for seamless transitions and dynamic effects.

- **Bright & Flexible Silicone Strip Light:** Constructed from waterproof silicone, the strip is soft, flexible, and easy to bend, ideal for various installations. It produces bright, natural, and colorful linear light. *Note: The controller and power adapter are NOT waterproof.*
- **Wireless App & Smart Voice Control:** Connects via Bluetooth to the NEEWER Home App for comprehensive lighting control. Compatible with Google Assistant and Alexa via 2.4GHz Wi-Fi for voice commands. *Note: 5GHz networks are NOT supported.*
- **Dynamic Scenes & Music Sync:** Offers over 50 preset scenes and features a built-in microphone in the control box for real-time music synchronization, creating immersive atmospheres.
- **AI Design & Creative DIY Mode:** Powered by the NEEWER Smart AI Lighting Engine, it can generate lighting effects based on voice, text, or image commands. Creative DIY Mode allows for personalized lighting designs.

## 2. Package Contents

Please verify that all items listed below are included in your package:

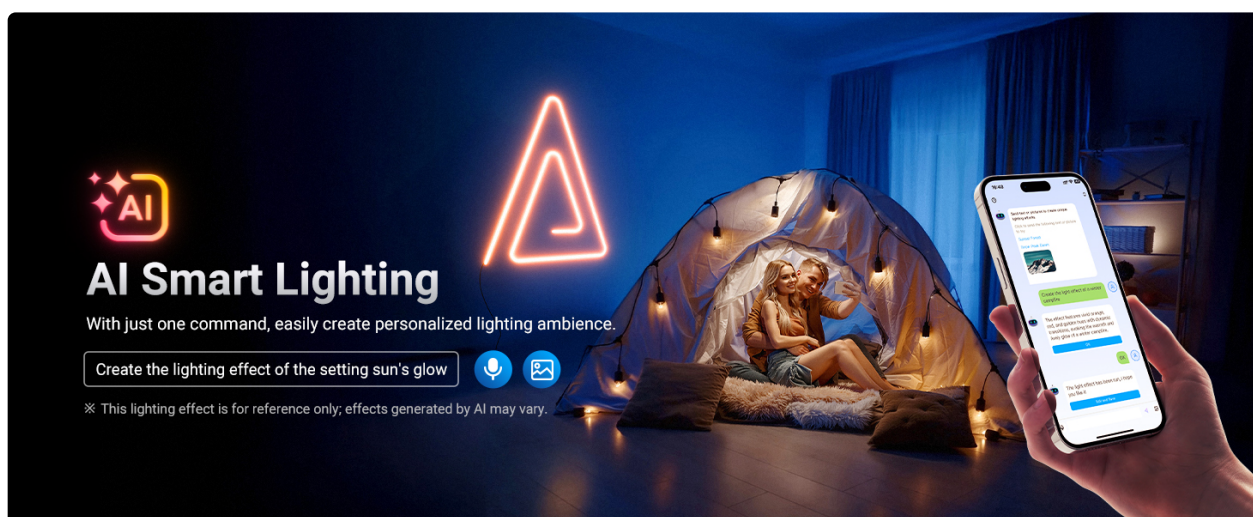


Image: A visual representation of the NEEWER NS02 LED Strip Light package contents, including the LED strip, control box, power adapter, mounting accessories, and user manual.

- 1 x 9.84ft/3m LED Strip Light
- 1 x Control Box
- 1 x Power Adapter
- 12 x Clip
- 13 x Screw
- 16 x Double Sided Adhesive tape
- 1 x User Manual

## 3. Setup

Follow these steps to install your NEEWER NS02 LED Strip Light:

## Installation Steps

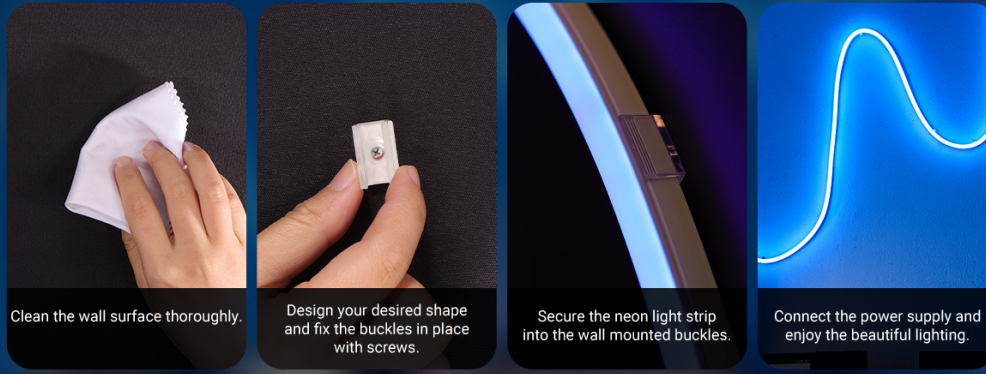


Image: A step-by-step visual guide illustrating the installation process, from cleaning the surface to connecting the power supply.

- 1. Prepare the Surface:** Ensure the installation surface is clean, dry, and smooth. Wipe away any dust or debris.
- 2. Plan Your Design:** Before attaching, lay out the LED strip to visualize your desired shape or pattern.
- 3. Install Mounting Clips:** Use the provided buckles and screws to fix the mounting clips along your planned path. Alternatively, use the double-sided adhesive tape for lighter applications or temporary setups.
- 4. Secure the LED Strip:** Gently press the LED strip into the installed clips or onto the adhesive tape, ensuring it is firmly in place.
- 5. Connect Power:** Connect the LED strip to the control box, and then connect the control box to the power adapter. Plug the power adapter into a suitable power outlet.

## 4. Operating Instructions

---

The NEEWER NS02 LED Strip Light offers multiple control methods for a personalized lighting experience.

### 4.1 Control Box Operation

The inline control box provides basic functions:

- **Power Button:** Press to turn the lights ON/OFF.
- **Mode Button:** Cycle through various preset lighting modes and effects.
- **Brightness Button:** Adjust the brightness level of the lights.

### 4.2 NEEWER Home App Control

For advanced control and customization, download the NEEWER Home App (available on iOS and Android) and connect via Bluetooth.



Image: The NEEWER Home App interface on a smartphone, demonstrating wireless control and smart voice command integration for the LED strip light.

- **Color Selection:** Choose from a full spectrum of colors.
- **Brightness Adjustment:** Fine-tune the light intensity.
- **Dynamic Lighting Effects:** Utilize segmented control to create seamless transitions, flowing, cycling, or flashing effects across multiple colors.
- **50+ Preset Scenes:** Select from a variety of pre-programmed scenes inspired by daily life, holidays, emotions, and nature.
- **Music Sync Mode:** The app, in conjunction with the control box's built-in microphone, allows the lights to change colors in sync with music beats or game sound effects.
- **AI Design & Creative DIY Mode:** Use the NEEWER Smart AI Lighting Engine to generate unique lighting effects based on voice, text, or image inputs. Create and save your own custom lighting patterns.

### 4.3 Smart Voice Control (Google Assistant & Alexa)

Connect the LED strip to your 2.4GHz Wi-Fi network to enable voice control through compatible smart home devices.

- **Voice Commands:** Use simple voice commands to adjust brightness, change colors, or switch modes (e.g., "Alexa, set the light strip brightness to 80%").

## 5. Maintenance

---

To ensure the longevity and optimal performance of your LED strip light, follow these maintenance guidelines:

- **Cleaning:** Gently wipe the silicone surface of the LED strip with a soft, dry cloth. Avoid using abrasive cleaners or harsh chemicals, as these can damage the material.
- **Handling:** While flexible, avoid excessive bending or sharp folds that could damage the internal wiring or LEDs.
- **Storage:** If storing the strip for an extended period, coil it loosely and keep it in a cool, dry place away from direct sunlight.
- **Water Resistance:** The silicone strip is waterproof, but the control box and power adapter are NOT. Ensure these components are protected from moisture.

## 6. Troubleshooting

---

If you encounter any issues with your LED strip light, refer to the following common problems and solutions:

Problem	Possible Cause	Solution
Lights do not turn on.	No power, loose connection, faulty adapter.	Check power adapter connection. Ensure power outlet is functional. Verify all connections between strip, control box, and adapter are secure.
App cannot connect to the device.	Bluetooth/Wi-Fi issue, incorrect network.	Ensure Bluetooth is enabled on your phone. Confirm your Wi-Fi router is 2.4GHz (5GHz is not supported). Restart the app and the LED strip. Try re-pairing the device in the app.
Voice control not working.	Incorrect Wi-Fi, device not linked.	Verify the device is connected to a 2.4GHz Wi-Fi network. Ensure the NEEWER Home App is linked to your Google Assistant or Alexa account. Check your voice assistant settings.
Colors are inconsistent or incorrect.	Software glitch, damaged section.	Restart the LED strip and the app. If a section is permanently discolored, it may indicate damage.

## 7. Specifications

---

Feature	Detail
Brand	NEEWER
Model Number	NS02
Item Length	9.84 Feet (3 meters)
Color	Multicolor (RGB)
Material Type	Silicone
Light Source Type	LED
Number of Light Sources	252
Connectivity Protocol	Bluetooth, Wi-Fi (2.4GHz only)
Special Feature	Remote Controlled (via App/Voice)
Indoor/Outdoor Usage	Outdoor (Strip only; controller/adapter not waterproof)
Power Source	Corded Electric
UPC	191073117747

## 8. Warranty and Support

---

The NEEWER NS02 LED Strip Light comes with a **1-year manufacturer's warranty**. This warranty covers

defects in materials and workmanship under normal use.

For technical support, warranty claims, or any questions regarding your product, please contact NEEWER customer service through their official website or the contact information provided in your purchase documentation. Please have your model number (NS02) and proof of purchase ready when contacting support.