



[Manuals.plus](#) /

> [Real Relax](#) /

> Real Relax 20x20FT Heavy Duty Metal Carport with Removable Sidewalls Instruction Manual

## Real Relax CPS2020-H294-0902

# Real Relax 20x20FT Heavy Duty Metal Carport with Removable Sidewalls Instruction Manual

Model: CPS2020-H294-0902

## 1. INTRODUCTION AND SAFETY WARNINGS

This manual provides essential instructions for the safe assembly, operation, and maintenance of your Real Relax 20x20FT Heavy Duty Metal Carport. Please read all instructions carefully before beginning assembly or use. Retain this manual for future reference.

### Important Safety Information:

- Always secure the carport to a stable foundation using the provided ground stakes and support poles. Failure to do so can result in the carport tilting or being overturned by strong winds, potentially causing damage or injury.
- Ensure the assembly area is clear of obstructions and overhead power lines.
- Assembly typically requires two or more people for safety and ease.
- Do not use the carport in extreme weather conditions beyond its design specifications (e.g., excessive snow load, hurricane-force winds).
- Regularly inspect all connections and anchoring points for security and wear.

## 2. SETUP AND ASSEMBLY

The Real Relax 20x20FT Carport is designed for straightforward assembly. It is recommended to have at least two people for installation. The package is divided into 6 boxes and may arrive at different times. Please ensure all components are present before starting.



**Note:**

This package is divided into **6** boxes and may arrive at different times, so please be patient and feel free to contact us if you have any questions

Image: Delivery personnel handling multiple boxes, accompanied by a note stating that the carport package is divided into 6 boxes and may arrive at different times.

### Assembly Steps Overview:

1. **Assemble the Main Frame:** Connect the galvanized steel pipes to form the primary structure. Utilize the robust pole connectors for secure joints.
2. **Install the Metal Roof Panels:** Attach the galvanized steel roof panels to the assembled frame. Ensure waterproof round washers and sealing tape are correctly applied to prevent leaks.
3. **Hang the Sidewalls:** Secure the 180G waterproof PE sidewalls using the elastic cords. The sidewalls feature double-sided zippers for convenient access.

### Installation Steps



1

Assemble the Main Frame



2

Install the Metal Panel



3

Hang the Sidewalls

Image: A visual guide outlining the three main installation steps for the carport: assembling the main frame, installing the metal roof panels, and hanging the sidewalls.

### Anchoring and Support:

The carport is equipped with 16 ground nails and 4 additional support poles to enhance stability. These components are crucial for withstanding strong winds.

- Utilize the stable ground anchors to penetrate deeply into the ground.
- Position the support rods to effectively prevent the structure from swaying.

Image: A close-up image of a ground anchor, illustrating its function in enhancing the overall stability of the carport by securing it to the ground.



## Support rod

Effectively prevents the shed from swaying under wind or load conditions

*Image: An illustration showing a support rod in place, demonstrating how it effectively prevents the carport from swaying under wind or load conditions.*

### 3. OPERATING INSTRUCTIONS

---

Your Real Relax carport offers versatile protection and storage solutions.

#### **Flexible Use with Removable Sidewalls:**

The PE sidewalls can be easily removed or installed as needed, providing flexibility for different uses or weather conditions. This allows for open-air shelter or enclosed protection.

# Easy to Remove for Flexible Use

The Sidewalls can be easily removed by taking off the elastic cords.



*Image: An image illustrating the elastic cord mechanism for easily attaching and detaching the carport's sidewalls, highlighting the flexibility of use.*

## Elastic Cord

Easy to install and disassemble



*Image: A close-up image of an elastic cord with a ball and ring, used for easy installation and disassembly of the carport components, particularly the sidewalls.*

**Access:**

The sidewalls are equipped with double-sided zippers, allowing entry and exit from both the interior and exterior of the carport.

### **Double-sided zipper**

Door can be opened from both inside and outside



*Image: A close-up image of a double-sided zipper on the carport's sidewall, allowing the door to be opened from both the inside and outside.*

### **Versatile Applications:**

The 20x20 ft (400 sq/ft) carport offers ample space for various uses:

- Accommodating cars, trucks, boats, or tractors.
- Providing shelter for outdoor gatherings or events.
- Serving as a storage space for tools and equipment.



*Image: An assembled Real Relax 20x20FT Heavy Duty Metal Carport, gray in color, providing shelter for two cars. The carport features a sturdy galvanized steel frame and removable sidewalls.*



*Image: The carport accommodating both a boat and a car, illustrating its versatile storage capabilities.*

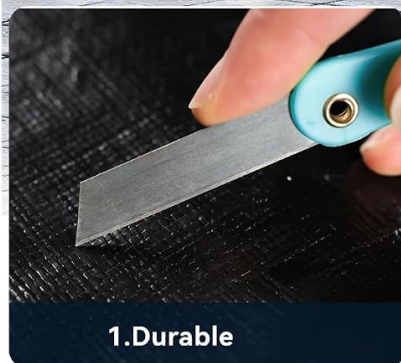
## 4. MAINTENANCE

Regular maintenance ensures the longevity and optimal performance of your carport.

- **Cleaning:** The 180G waterproof PE sidewalls are easy to clean. Use mild soap and water to wipe down the fabric as needed. Avoid harsh chemicals that could damage the material.
- **Frame Inspection:** Periodically check the galvanized steel frame for any signs of rust, damage, or loose connections. The rust-resistant coating provides long-lasting protection, but extreme conditions may require attention.
- **Roof Integrity:** Inspect the roof for any tears in the fabric or issues with the sealing tape and screw gaskets, especially after heavy rain or snow. Ensure the roof's rainproof and leak-proof performance is maintained.
- **Anchoring System:** Regularly verify that all 16 ground nails and 4 additional support poles are securely anchored. Re-tighten or re-secure any loose components to maintain stability, particularly before and after strong winds.
- **Snow Removal:** While the roof has a load capacity of 35 lbs per square foot, it is advisable to remove excessive snow accumulation to prevent structural stress.



## 180G Waterproof PE Sidewalls



1. Durable



2. Waterproof



3. Easy to Clean

*Image: A close-up view of the 180G waterproof PE sidewall material, demonstrating its durable, waterproof, and easy-to-clean properties.*

# Weather-Resistant Roof

With round washer and tape



*Image: A detailed view of the carport's galvanized steel roof, emphasizing the waterproof round washers and sealing tape designed to prevent leaks and enhance weather resistance.*

## 5. TROUBLESHOOTING

This section addresses common issues you might encounter with your carport.

### **Issue: Carport appears unstable or sways in wind.**

- **Solution:** Ensure all ground anchors are fully inserted and secure. Verify that all support poles and frame connections are tightly fastened. Add additional anchoring if necessary for your specific ground conditions or local wind patterns.

### **Issue: Water leakage from the roof.**

- **Solution:** Inspect the roof panels for any gaps or damage. Check that the waterproof round washers are correctly positioned under all screws and that the sealing tape is intact along all seams. Replace or reapply sealing materials as needed.

### **Issue: Sidewalls are difficult to attach or detach.**

- **Solution:** Ensure the elastic cords are not tangled or damaged. Clean any debris from the grommets or attachment points. If cords are worn, consider replacing them.

**Issue: Frame components do not fit together during assembly.**

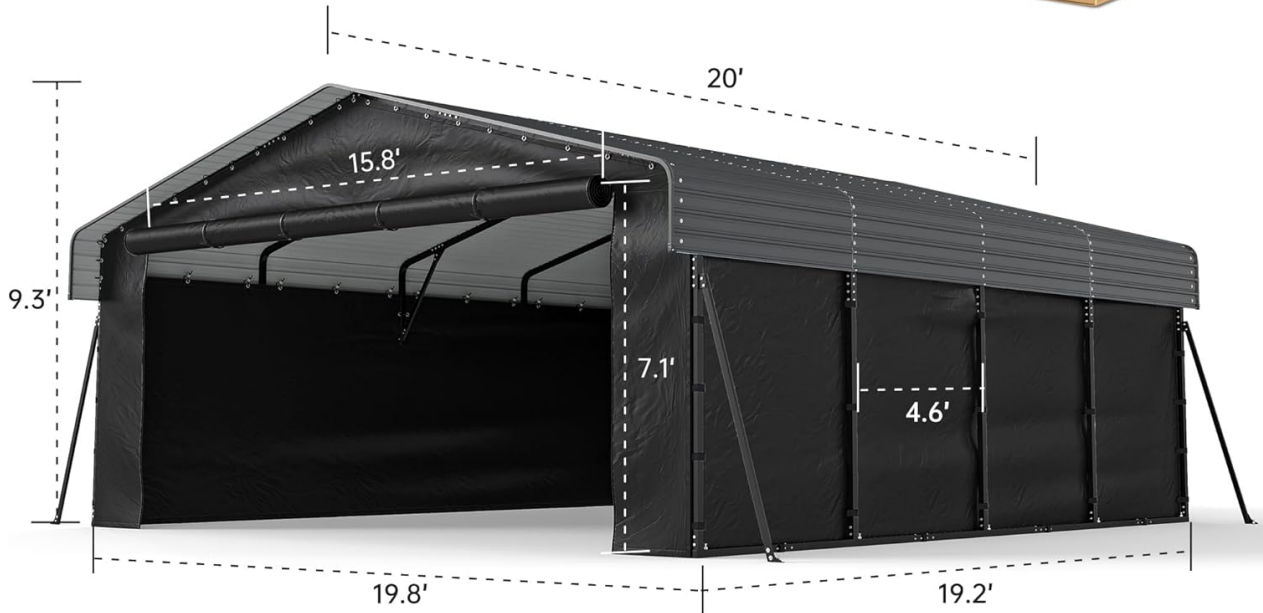
- **Solution:** Double-check the part numbers against the assembly diagram. Ensure components are oriented correctly. If a part is bent or damaged, contact customer support for a replacement.

## 6. SPECIFICATIONS

Feature	Detail
Brand	Real Relax
Model Number	CPS2020-H294-0902
Product Dimensions	240"L x 240"W x 120"H (20 ft L x 20 ft W x 10 ft H)
Frame Material	Galvanized Steel (2"x2" solid steel tubes)
Cover/Sidewall Material	180G Waterproof PE Fabric
Color	Gray
Water Resistance Level	Waterproof
Ultraviolet Light Protection	Yes
Roof Snow Load Capacity	35 lbs per square foot
Item Weight	133 pounds
Assembly Required	Yes

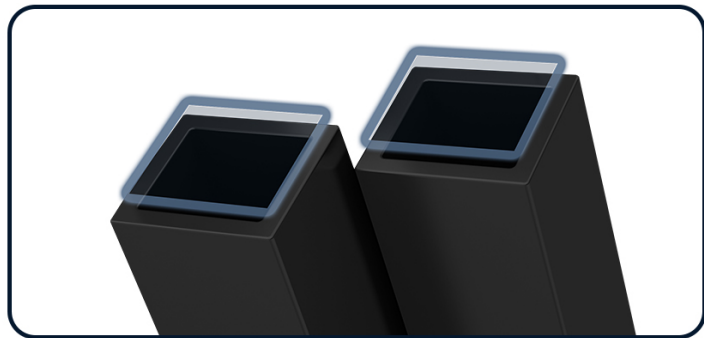
# Dimension Details

6 packages will be delivered at different times



*Image: A technical diagram detailing the dimensions of the 20x20FT carport, including length, width, and height measurements.*

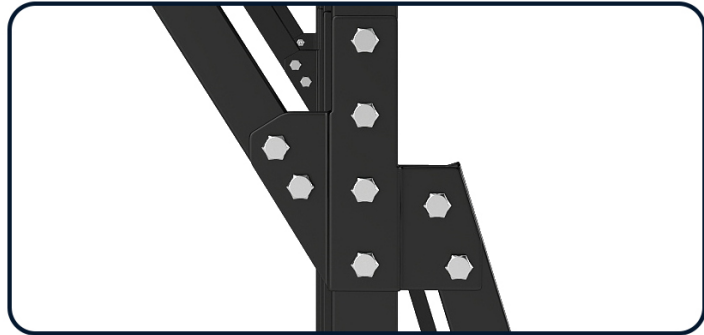
## 2"x2" Solid Steel Tube



*Image: An illustration showing the 2x2 inch solid steel tubes, which form the robust framework of the carport.*

## **Robust Pole Connectors**

Improve load-bearing performance



*Image: An illustration highlighting the robust pole connectors designed to improve the load-bearing performance and stability of the carport structure.*

## **7. WARRANTY INFORMATION**

---

Specific warranty details for the Real Relax 20x20FT Heavy Duty Metal Carport are not provided in the product information. For warranty inquiries, please refer to your purchase documentation or contact Real Relax customer support directly.

Please note that proper assembly, maintenance, and adherence to safety warnings are crucial for the validity of any potential warranty claims.

## **8. CUSTOMER SUPPORT**

---

For any questions, assistance with assembly, troubleshooting, or to inquire about replacement parts, please contact Real Relax customer support.

You can typically find contact information on the Real Relax official website or through the retailer where you purchased the product. Please have your model number (CPS2020-H294-0902) and purchase date available when contacting support.