

## EUQQ YYK-Q16S

# EUQQ YYK-Q16S Open Ear Bluetooth 5.4 Earbuds Instruction Manual

Model: YYK-Q16S

## 1. INTRODUCTION

Thank you for choosing the EUQQ YYK-Q16S Open Ear Bluetooth 5.4 Earbuds. These earbuds are designed to provide a comfortable listening experience while maintaining awareness of your surroundings. Featuring Bluetooth 5.4 technology, IPX7 waterproofing, and extended battery life, they are suitable for various activities including sports and daily use.

## 2. WHAT'S IN THE BOX

- 2 x Over Ear Open Headphones
- 1 x Charging Cable (Type-C)
- 1 x Charging Case
- 1 x User Manual
- 1 x Product Box

## 3. PRODUCT OVERVIEW

The EUQQ YYK-Q16S earbuds feature an open-ear design for comfort and situational awareness, advanced Bluetooth 5.4 connectivity, and a long-lasting battery.



Figure 1: EUQQ YYK-Q16S Earbuds and Charging Case

### Key Features:

- **Open Over-Ear Design:** Allows you to hear ambient sounds while enjoying audio, enhancing safety and comfort during extended wear.
- **Bluetooth 5.4 Connectivity:** Provides a stable, fast, and low-power connection with minimal latency for synchronized audio.
- **Extended Playtime:** Offers up to 10 hours of continuous use, with an additional 40 hours provided by the charging case, totaling 50 hours.
- **Bone Conduction & Stereo Sound:** Delivers Hi-Fi sound with rich bass and clear calls through a built-in microphone.
- **Lightweight & Comfortable:** Weighing only 0.26oz per earbud, with a memory-flex titanium alloy frame and medical-grade silicone for a secure and healthy fit.
- **IPX7 Waterproof Rating:** Protects against sweat and rain, making them suitable for workouts and outdoor activities.

## 4. SETUP

#### 4.1 Charging the Earbuds and Case

Before first use, fully charge the earbuds and charging case. Connect the provided Type-C charging cable to the charging port on the case and a power source. The LED digital display on the case will show the battery percentage, and individual earbud charge levels will be indicated.



Figure 2: Charging the Earbuds and Case

#### 4.2 Wearing the Earbuds

The earbuds are designed with ear hooks for a secure and comfortable fit. Follow these steps for proper placement:

1. Take the earbuds out of the charging case.
2. Hang the end of the earphone hook over your ear bone.
3. Turn the earphone and slide it behind your ear.
4. Adjust the ear hook and gently pull down for a secure fit.

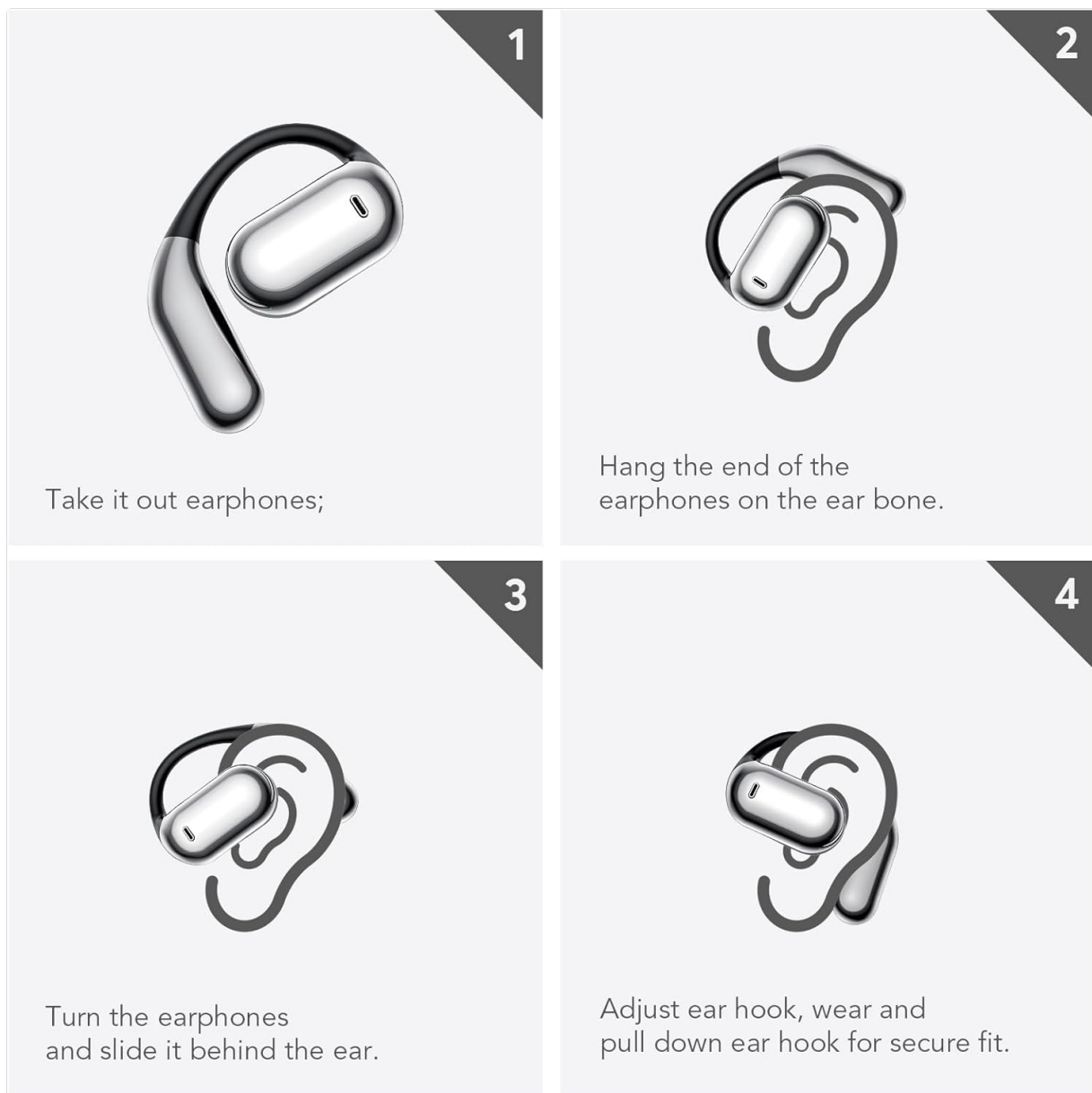


Figure 3: Earbud Wearing Steps

### 4.3 Pairing with a Bluetooth Device

The earbuds will automatically enter pairing mode when removed from the charging case. To connect:

1. Ensure Bluetooth is enabled on your device (e.g., smartphone, tablet).
2. Open the charging case and remove both earbuds. They will automatically power on and enter pairing mode.
3. On your device, search for Bluetooth devices and select "YYK-Q16S" from the list.
4. Once connected, you will hear an audio prompt, and the earbuds will be ready for use.

## 5. OPERATING INSTRUCTIONS

The earbuds feature intuitive touch controls for managing audio playback and calls.

## Ultra-Light Design with Skin-Friendly Material

Each earhook is only 7.5g and crafted from premium soft silicone material is surface for complete comfort



Figure 4: Simple Touch Controls

### Touch Control Functions:

- **Volume + (R):** Double-tap the right earbud.
- **Volume - (L):** Double-tap the left earbud.
- **Play/Pause (L/R):** Single-tap either earbud.
- **Answer Call (L/R):** Single-tap either earbud.
- **Reject Call/Hang Up (L/R):** Long press either earbud for 1 second.
- **Previous Song (L):** Long press the left earbud for 1 second.
- **Next Song (R):** Long press the right earbud for 1 second.
- **Siri (L/R):** Triple-tap either earbud.
- **Reset Earbuds (I&D):** Disconnect from the phone and quickly press the left button 5 times at the same time to reset.

## 6. MAINTENANCE

The EUQQ YYK-Q16S earbuds are IPX7 waterproof, meaning they are protected against immersion in water up to 1 meter for 30 minutes. This makes them resistant to sweat and rain. However, they are not suitable for swimming or prolonged submersion.

- Wipe the earbuds with a soft, dry cloth after use, especially after workouts.
- Ensure the charging contacts on both the earbuds and the case are clean and dry before charging.
- Store the earbuds in their charging case when not in use to protect them and keep them charged.

## 7. TROUBLESHOOTING

- **No Sound/Connection Issues:**
  - Ensure earbuds are charged.
  - Verify Bluetooth is enabled on your device.
  - Try re-pairing the earbuds (see Section 4.3).
  - If issues persist, perform a factory reset (see Touch Control Functions).
- **Charging Problems:**
  - Check if the charging cable is securely connected.
  - Ensure the charging port and contacts are clean and free of debris.

- Try a different charging cable or power adapter.
- **Earbuds Not Fitting Securely:**
  - Review the wearing instructions in Section 4.2.
  - Adjust the ear hooks to conform to your ear shape.

## 8. SPECIFICATIONS

Feature	Specification
Model Name	YYK-Q16S-Black
Connectivity Technology	Wireless (Bluetooth)
Bluetooth Version	5.4
Bluetooth Range	15 Meters
Audio Driver Type	Bone Conduction Driver
Control Type	Touch Control
Ear Placement	Open Ear
Form Factor	Over Ear
Water Resistance Level	IPX7 Waterproof
Item Weight (Earbuds)	0.26oz (per earbud)
Total Playtime	Up to 50 hours (with charging case)
Single Playtime	Up to 10 hours
Charging Time (Case)	Approx. 1 hour (Type-C)
Material	Plastic, Skin-friendly Silicone
Color	Black

## 9. WARRANTY AND SUPPORT

For warranty information and customer support, please refer to the documentation included in your product packaging or visit the official EUQQ website. Keep your purchase receipt for warranty claims.