

manuals.plus /

› [ApoloSign](#) /

› [ApoloSign FA27 Digital Calendar User Manual: Setup, Operation, and Troubleshooting](#)

ApoloSign FA27

ApoloSign FA27 Digital Calendar User Manual

Model: FA27 (27-inch 4K)

1. INTRODUCTION

The ApoloSign FA27 Digital Calendar is an interactive display designed to streamline family organization and scheduling. It features a dual-mode operating system, allowing users to switch between a dedicated Calendar Mode for focused scheduling and an Android Mode for a customizable smart hub experience. This manual provides comprehensive instructions for setting up, operating, and maintaining your device.

4K

3840×2160

27"

10
29 PM

Day

Tues, July

27

10:29 AM

Today 🎂



• Timeout

Go to an international baseball game

• 12:30 PM ~ 2:00 PM

Going to Jon's House for Piano Lessons with Blake

• 10:30 AM ~ 10:45 AM 🎂

Family Birthday Party

• 21:00 PM ~ 21:45 AM

Small Town Community Basketball Game

Key Features:

- **Dual-Mode Functionality:** Seamlessly switch between Calendar Mode for focused scheduling and Android Mode for a customizable dashboard.
- **Multi-Calendar Sync:** Automatic synchronization with Google, Outlook, iCloud, and other calendar services.
- **Chore Chart & Routine Planner:** Create reward-based chore systems and manage family routines.
- **Voice Assistant & Smart Home Control:** Integrate with Google Home for voice commands and smart device management.
- **Smart Photo Frame & Live Screensaver:** Display memories from Google Photos and personalize screensavers with videos, schedules, or clocks.
- **Customizable Widget Dashboard:** Add and arrange widgets for calendars, chores, meals, weather, and more.

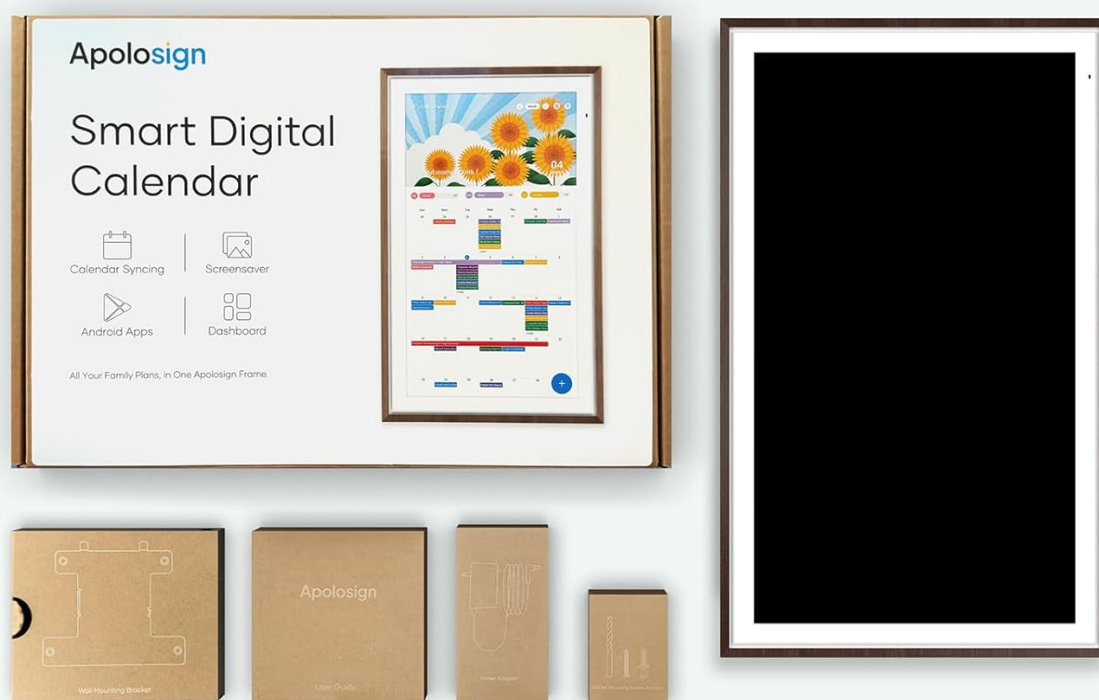
2. SETUP

2.1 Unboxing and Components

Carefully remove all components from the packaging. Verify that all items are present:

- ApoloSign FA27 Digital Calendar Unit
- Power Adapter
- Wall Mounting Bracket (if included)
- Quick Start Guide

Why Choose ApoloSign Calendar?



Beyond the basics, we offer you more:

- ✓ Dual-OS Mode
- ✓ Exquisite Wood-grain Frame
- ✓ No Subscription Required
- ✓ Free Self-developed App

Image 2.1: Overview of the ApoloSign Digital Calendar and its included accessories.

2.2 Physical Installation

The ApoloSign FA27 can be placed on a desktop or mounted on a wall.

Desktop Placement:

1. Choose a stable, flat surface.
2. Ensure adequate ventilation around the device.

Wall Mounting:

1. Identify a suitable wall location, ensuring it can support the device's weight (approximately 24.5 lbs).
2. Use the provided wall mounting bracket and hardware. Follow the instructions in the Quick Start Guide for secure installation.
3. Ensure the power cable can reach an outlet without strain.

2.3 Initial Power-On and Network Connection

1. Connect the power adapter to the device and plug it into a power outlet. The device will automatically power on.

2. Follow the on-screen prompts to select your language and connect to a Wi-Fi network. A stable internet connection is required for most features.
3. Log in with your Google account to access Google Play and other services.

3. OPERATING INSTRUCTIONS

3.1 Dual-Mode Functionality

The ApolloSign FA27 operates in two distinct modes:

- **Calendar Mode:** Provides a clean, focused display of your synchronized calendars, routines, and to-do lists. Ideal for quick glances and family coordination.
- **Android Mode:** Transforms the device into a customizable smart hub, allowing you to install apps from Google Play, manage widgets, and control smart home devices.

Switch between modes using the dedicated button or on-screen toggle, typically found in the quick settings panel.

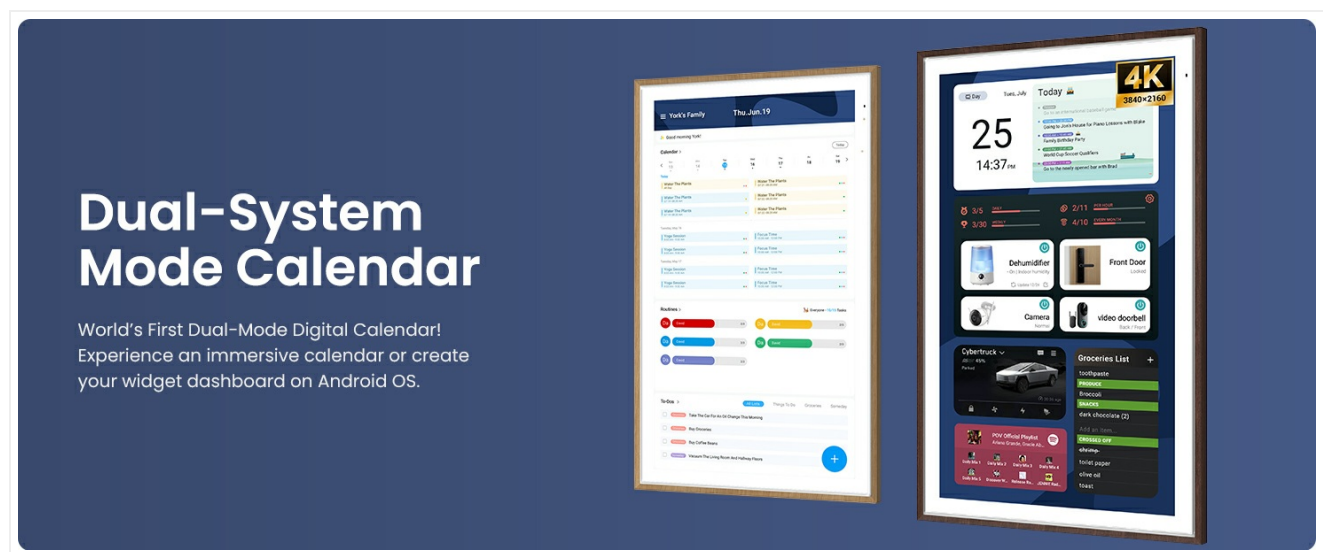


Image 3.1: The ApolloSign Digital Calendar showcasing its dual-system mode capabilities.

3.2 Calendar Synchronization

The device supports automatic synchronization with popular calendar services.

1. Navigate to the 'Settings' menu.
2. Select 'Accounts' and add your Google, Outlook, iCloud, or other compatible calendar accounts.
3. Ensure synchronization is enabled for each account. Events will automatically update on the display.



Image 3.2: The calendar auto-syncing feature, compatible with multiple platforms.

3.3 Chore Chart & Routine Planner

Utilize the built-in features to manage household chores and routines.

- Access the 'Chore Chart' or 'Routines' application.
- Create tasks, assign them to family members, and set completion criteria.
- Optionally, configure a reward system to encourage task completion.

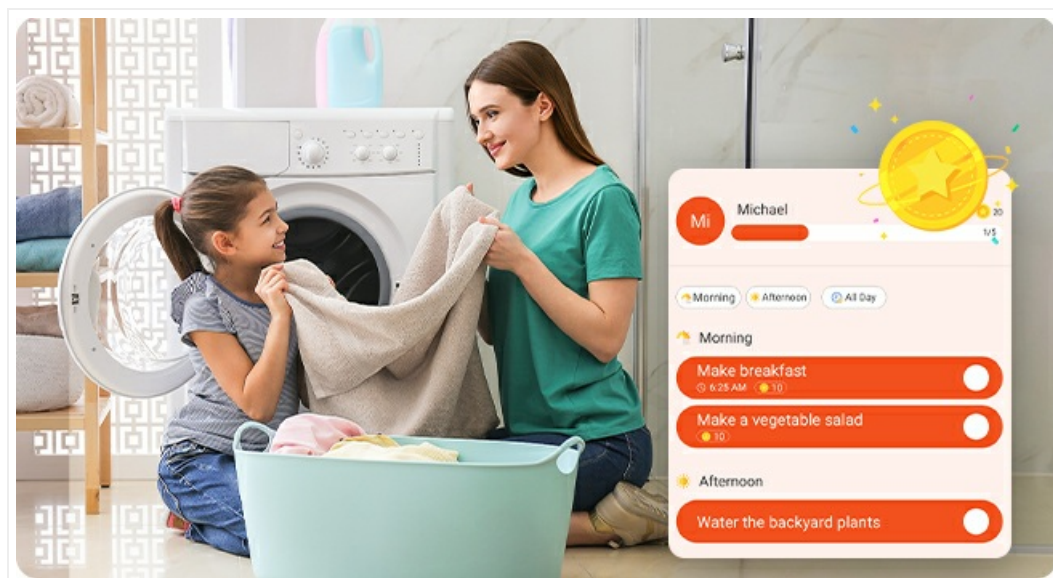


Image 3.3: Example of the rewards-based chore chart in action.

3.4 Voice Assistant & Smart Home Control

The device integrates with Google Assistant for voice commands and smart home management.

1. Ensure your Google account is linked and Google Assistant is enabled in settings.
2. Use voice commands (e.g., "Hey Google, what's the weather?") to get information or control connected smart devices.
3. Manage smart home devices (doorbells, cameras, lights) directly from the display's Android Mode dashboard.

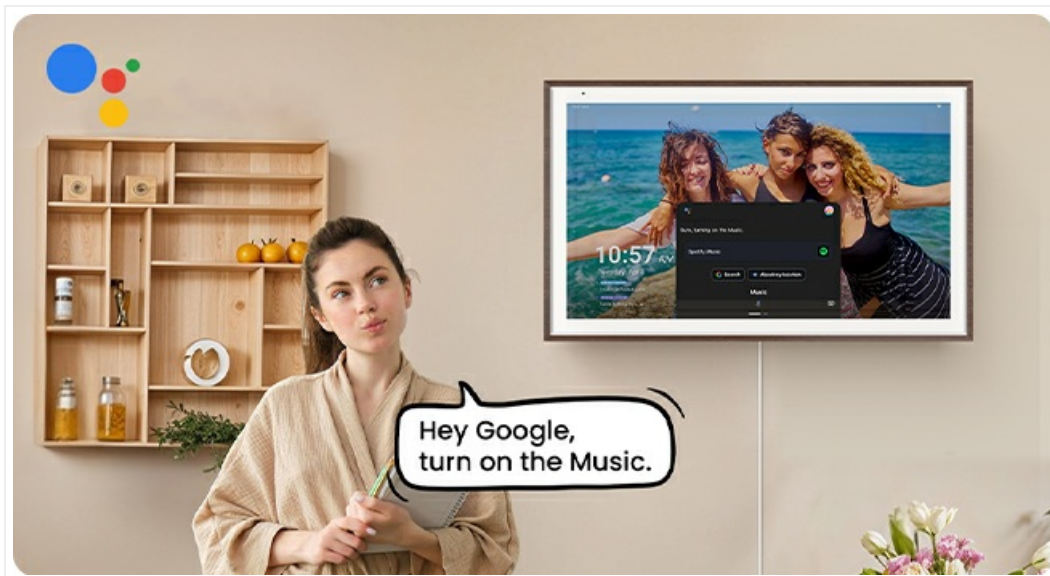


Image 3.4: Using voice commands with the integrated Google Assistant.

3.5 Smart Photo Frame & Live Screensaver

Transform your calendar into a dynamic photo display.

- **Photo Frame:** Link your Google Photos account to display personal photo albums as a screensaver.
- **Live Screensaver:** Customize your screensaver with a mix of photos, videos, clocks, or calendar views.



Without Subscription

Display Your Memories

Turn your screen into a smart photo frame with support for Google Photos. It's a simple, beautiful way to keep loved ones close, totally free.



Image 3.5: The device functioning as a smart photo frame, displaying memories.

3.6 Customizable Widget Dashboard

In Android Mode, personalize your display with various widgets.

1. Access the 'Widget' customization option from the home screen.
2. Drag and drop widgets for calendar, chores, meals, weather, music controls, stocks, and more.
3. Arrange widgets to create a personalized family hub.

Customize Your Dashboards

Add and arrange the widgets you need calendar, chores, meals, weather, doorbell, music controls, stocks, and more.

Customize your dashboards for a smart family hub.

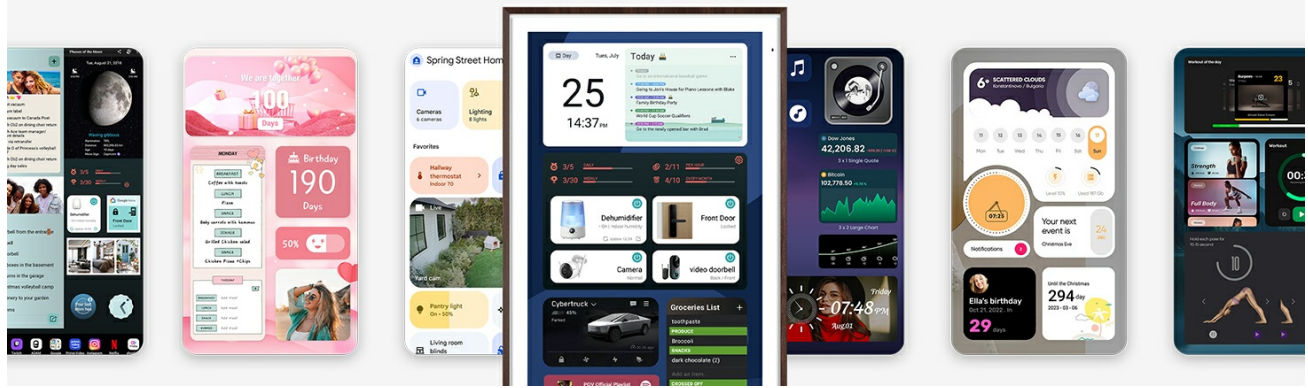


Image 3.6: Examples of customizable dashboards with various widgets.

3.7 Privacy and Eco-Friendly Features

- **One-Swipe Privacy Cover:** Quickly hide your screen content behind a photo cover for privacy when guests are present.
- **Auto Brightness:** The display automatically adjusts brightness based on ambient light conditions.
- **Sleep Mode:** Configure sleep schedules to save energy during inactive periods.

Instant Privacy

One-Swipe Privacy Cover

When guests arrive, keep your information safe with one quick swipe. Privacy Mode instantly hides your screen behind a photo cover.



Image 3.7: Activating the one-swipe privacy cover.

4. MAINTENANCE

4.1 Cleaning the Device

To maintain optimal display clarity and device longevity:

- Power off the device before cleaning.
- Use a soft, lint-free cloth slightly dampened with water or a screen-cleaning solution.
- Avoid abrasive cleaners, solvents, or spraying liquids directly onto the screen.
- Gently wipe the screen and frame to remove dust and smudges.

4.2 Software Updates

Regularly check for and install software updates to ensure your device has the latest features and security enhancements.

1. Navigate to 'Settings' > 'About Device' > 'Software Update'.
2. If an update is available, follow the on-screen instructions to download and install it. Ensure the device is connected to power during updates.

5. TROUBLESHOOTING

This section addresses common issues you might encounter.

Issue	Possible Cause	Solution
Device does not power on.	Power cable not connected; power outlet issue.	Ensure power cable is securely connected to both the device and a working power outlet. Try a different outlet.
Calendar not syncing.	No internet connection; incorrect account settings; sync disabled.	Verify Wi-Fi connection. Check account login details in 'Settings' > 'Accounts'. Ensure sync is enabled for the specific calendar.
Touchscreen unresponsive.	Temporary software glitch; screen obstruction.	Restart the device. Ensure the screen is clean and free of debris.
Device shuts down when unplugged.	The device is designed for continuous power.	The ApoloSign FA27 is intended to be plugged in for operation and does not contain an internal battery for portable use.
Poor audio quality from speakers.	Built-in speakers are primarily for notifications/alarms.	For enhanced audio, connect external Bluetooth speakers or headphones via Bluetooth settings.

6. SPECIFICATIONS

Feature	Detail
Brand	ApoloSign
Model Number	FA27
Display Size	27-inch
Resolution	4K (3840x2160)
Color	Dark Oak
Item Weight	24.5 pounds
Product Dimensions	30.08 x 19.65 x 5.28 inches
Operating System	Dual Mode (Calendar OS & Android OS)
Connectivity	Wi-Fi, Bluetooth
Special Features	Touchscreen, Voice Assistant, Smart Home Control, Auto Brightness, Sleep Mode, Privacy Cover

7. WARRANTY AND SUPPORT

ApoloSign is committed to providing quality products and customer satisfaction.

7.1 Warranty Information

- **Lifetime Warranty:** The ApoloSign FA27 Digital Calendar comes with a lifetime warranty. Please refer to the official ApoloSign website or contact customer support for full terms and conditions.
- **30-Day Free Trial:** A 30-day free trial period may be available. Check purchase details for eligibility.

7.2 Customer Support

For any questions, technical assistance, or warranty claims, please contact ApoloSign customer support:

- **24/7 Fast Support:** Available around the clock to assist you.
- **Contact Information:** Refer to the Quick Start Guide or the official ApoloSign website for the most current contact details (phone, email, or online chat).
- **Online Resources:** Visit the [ApoloSign Store on Amazon](#) for additional product information and support.