

## Philips 55PUG8929/78

# Philips Smart TV Ambilight THE ONE 55 inch 4K 144 Hz

Model: 55PUG8929/78 - User Manual

## INTRODUCTION

This manual provides essential information for the safe and efficient use of your Philips Smart TV Ambilight THE ONE 55 inch 4K 144 Hz, model 55PUG8929/78. Please read these instructions carefully before operating the device and retain them for future reference.

Your Philips TV features Ambilight technology, a P5 processor for enhanced image quality, Dolby Vision and Dolby Atmos for immersive audiovisual experiences, a 144Hz refresh rate with VRR and AMD FreeSync Premium for gaming, and the Titan OS smart TV platform.

## SETUP

### 1. Unboxing and Package Contents

Carefully remove all components from the packaging. Ensure all items are present before discarding packaging materials.

- 1 Smart TV Philips 55"
- 1 Remote control
- 2 AAA batteries
- 1 Power cable
- 1 Quick start guide
- 1 Legal and safety leaflet
- 1 Table stand

*Note: The product does not include installation services. For apartment delivery, lifting, or wall mounting, the customer is responsible. Philips is not responsible for installation or assembly.*

### 2. Assembling the Stand or Wall Mounting

If using the included table stand, follow the instructions in the quick start guide to securely attach it to the TV. Ensure all screws are tightened properly. If wall mounting, use a VESA-compatible wall mount (sold separately) and consult a professional for installation to ensure safety and proper alignment. The TV supports VESA 30cm mounting.

# PHILIPS

**4K HDR10+**

Qualidade de cinema, com contraste e cores vibrantes.

  
**144 Hz**  
**VRR**

Ação em alta velocidade sem cortes ou travamentos.

  
**Dolby**  
**VISION-ATMOS**

Tecnologia que transforma cada cena em pura imersão.

**AMD**   
**FreeSync**  
Premium

Experiência de jogo estável, fluida e sem atrasos.

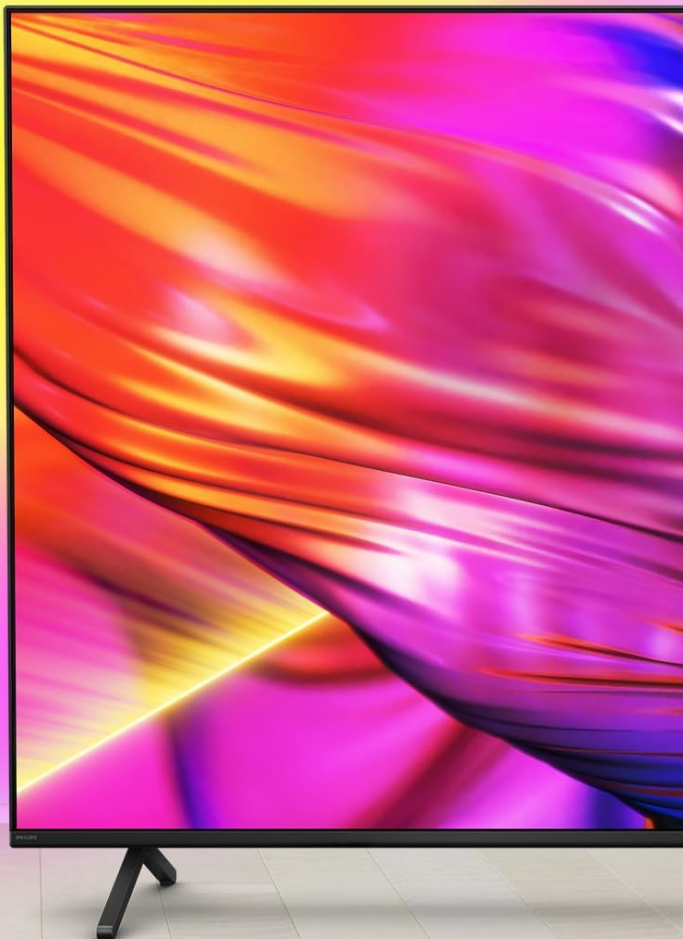


Image: Front view of the Philips 55 inch Smart TV with its table stand assembled.

# Novo Controle Remoto

## Compacto, moderno, inteligente e sustentável



Image: Diagram showing the dimensions of the Philips 55 inch Smart TV with and without the stand, including VESA wall mount specifications (30cm).

### 3. Connecting Peripherals

Connect your devices to the TV's ports. Refer to the back and side views for port locations.

- **Power:** Connect the power cable to the TV and a suitable electrical outlet (110V/220V compatible).
- **HDMI:** Use HDMI 2.1 ports for high-definition devices like gaming consoles, Blu-ray players, or set-top boxes. There are 4 HDMI ports available.
- **USB:** Connect USB drives for media playback or external devices. There are 2 USB ports.
- **Antenna/RF:** Connect your antenna cable for terrestrial TV reception.
- **Ethernet (RJ-45):** For a wired internet connection.
- **Audio L-R:** Analog audio input.
- **SPDIF (Optical Audio):** For digital audio output to soundbars or home theater systems.
- **Headphone Output:** For connecting headphones.





Image: Side profile of the Philips 55 inch Smart TV, highlighting the accessible USB ports and other side connections.



Image: Rear view of the Philips 55 inch Smart TV, displaying the full array of input and output ports for various connections.

## 4. Initial Power On and Network Setup

After connecting the power cable, press the power button on the remote control. Follow the on-screen instructions to complete the initial setup, including language selection, country, and network connection (Wi-Fi or Ethernet). The TV supports Wi-Fi Dual Band and Bluetooth 5.2 for wireless connectivity.

## OPERATING INSTRUCTIONS

---

### 1. Remote Control Functions

The included remote control is designed for intuitive navigation and features voice command with integrated Alexa. Insert the two AAA batteries into the remote control before use.





Image: Detailed view of the Philips Smart TV remote control, highlighting the voice command button (Alexa), LED indicator keys, and dedicated shortcut buttons for popular streaming applications.

- **Power Button:** Turns the TV on or off.
- **Voice Command (Alexa):** Press and hold to use voice commands for searching content, controlling smart home devices, and more.
- **Navigation Pad:** Use the directional buttons to navigate menus and select options.
- **Shortcut Buttons:** Direct access to popular streaming apps like Netflix, Prime Video, YouTube, and Pluto TV.
- **Volume/Channel:** Adjust volume and change channels.
- **LED Indicator Keys:** Keys with LED indicators for numeric or directional mode.

## 2. Smart TV Features (Titan OS)

Your TV runs on Titan OS, offering a user-friendly interface and quick access to various applications. The home screen is customizable, allowing you to prioritize your favorite apps and content.



Image: The Philips Smart TV's home screen, showing a selection of streaming applications and a personalized content layout.

- **Personalized Home Screen:** Access your favorite content and applications with recommendations tailored to your preferences.
- **Intuitive Interface:** Organize your home screen by prioritizing frequently used applications for easy daily access.
- **Content Discovery:** Easily find new content with agile navigation and smart search functions.

### 3. Ambilight Technology

Ambilight projects colors from the screen onto the surrounding wall, enhancing immersion. Your TV features three-sided Ambilight with 8 illumination modes.



# AMBILIGHT tv

Tenha uma nova experiência  
com a tecnologia Ambilight  
e 8 modos de iluminação.



Image: A Philips Ambilight TV displaying dynamic backlighting that extends the on-screen colors onto the wall, creating an immersive viewing experience.

- **Natural:** Softer colors and brightness for visual comfort.
- **Vivid:** Stronger, more vibrant Ambilight colors to create a sense of expanded imagery.
- **Lounge:** Can be active even when the TV is off, creating a cozy ambient atmosphere.
- **Game:** Adapts lights to dark and dynamic scenes, enhancing gaming immersion.
- **Music:** Ambilight follows the rhythm of music, ideal for creating a festive home environment.
- **AmbiWake Up:** Simulates sunrise with soft Ambilight, gentle music, and weather forecast.
- **Ambi-sleep:** With the screen off, Ambilight emits an orange light and nature sounds to promote sleep.
- **Aurora:** Transforms the TV into a decorative piece, displaying continuous animations for a pleasant ambiance.

## Natural

As cores e brilho são mais  
suaves, permitindo um  
maior conforto visual.



## Vívido

As cores do Ambilight são mais  
fortes e vívidas, para dar impressão  
de amplitude às imagens.

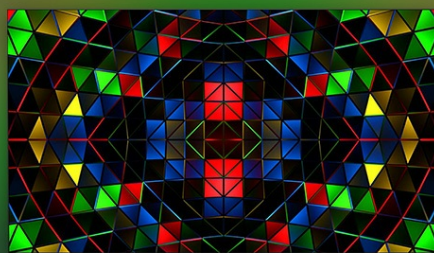
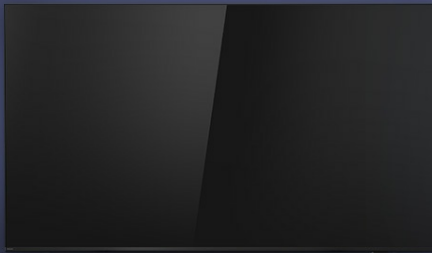


Image: Comparison of Ambilight's Natural mode (soft, comfortable lighting) and Vivid mode (strong, vibrant lighting for expanded imagery).



### Lounge

Pode ser ligado mesmo com a TV desligada, criando uma atmosfera aconchegante para relaxar.



### Game

Adapta as luzes a cenas escuras e dinâmicas, ampliando a imersão nos jogos.



Image: Comparison of Ambilight's Lounge mode (ambient lighting when TV is off) and Game mode (dynamic lighting for gaming immersion).

### Música

O Ambilight segue o ritmo da música, ideal para criar um ambiente festivo na sua casa.



### AmbiWake Up

Simula o amanhecer com luz do Ambilight, música suave e previsão do tempo.

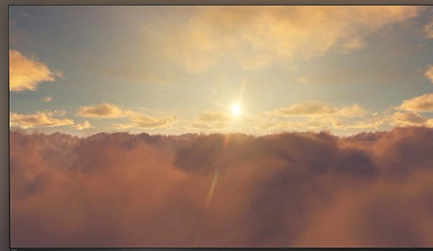


Image: Comparison of Ambilight's Music mode (lights synchronize with music) and AmbiWake Up mode (simulates sunrise).

### Ambi-sleep

Com a tela desligada, o Ambilight emite luz laranja e sons da natureza para estimular o sono.



### Aurora

Transforma a TV em uma peça decorativa, exibindo animações contínuas que deixam o ambiente mais agradável.

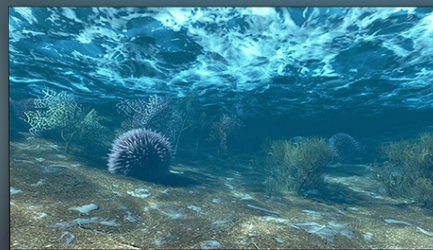


Image: Comparison of Ambilight's Ambi-sleep mode (orange light and nature sounds for sleep) and Aurora mode (decorative animations).

## 4. Picture and Sound Quality

The TV features a P5 processor, 4K resolution, Dolby Vision, and HDR10+ for exceptional image quality. The audio system includes 40W RMS, Dolby Atmos, and DTS Play-Fi for immersive sound.



### Som potente e imersivo

40W

Potência sonora que preenche o ambiente com clareza e intensidade.

Image: Explanation of the Philips P5 Perfect Picture Engine, illustrating how it optimizes colors, contrasts, and movements for realistic images.



### Som potente e imersivo

Dolby Atmos e DTS:X

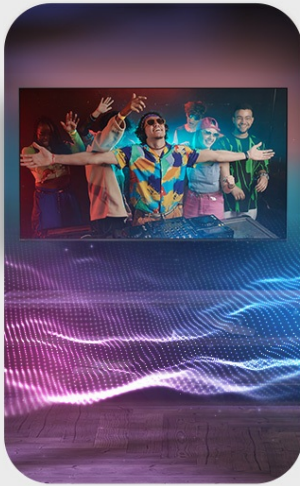
Tecnologias avançadas que criam um efeito sonoro tridimensional, fazendo você se sentir dentro da ação com um som mais envolvente.

Image: Visual comparison demonstrating the enhanced detail and richness of images with Dolby Vision and HDR compared to standard display.

- **P5 Processor:** Optimizes colors, contrasts, and movements in real-time for vivid and realistic images.
- **Dolby Vision & HDR10+:** Provides cinematic visual experience with impressive brightness, contrast, and color detail in 4K resolution.
- **40W RMS Audio:** Powerful sound output that fills the environment with clarity and intensity.
- **Dolby Atmos & DTS:X:** Advanced audio technologies creating a three-dimensional sound effect for an immersive experience.
- **Intellisound with AI:** Automatic audio adjustment based on content, ensuring clear and balanced sound from subtle dialogues to intense soundtracks.

## 5. Gaming Features

Designed for gamers, this TV offers a fluid and responsive gaming experience.



## Som potente e imersivo

### Intellisound com inteligência artificial

Ajuste automático de áudio conforme o conteúdo. Dos diálogos sutis às trilhas intensas, o Intellisound garante som claro e equilibrado.

Image: The Philips Smart TV's Game Bar interface, showing various settings for optimizing the gaming experience, including VRR, ALLM, and FreeSync Premium.

- **144Hz VRR:** Variable Refresh Rate ensures ultra-fast, tear-free, and stutter-free motion.
- **AMD FreeSync Premium:** Provides stable, fluid, and lag-free gaming.
- **Game Bar:** Access gaming-specific settings quickly.
- **ALLM (Auto Low Latency Mode):** Automatically switches to low-latency mode for responsive gaming.
- **Cloud Gaming:** Compatible with cloud gaming services like Blacknut.

## MAINTENANCE

---

### 1. Cleaning the TV

- **Screen:** Gently wipe the screen with a soft, lint-free cloth. For stubborn marks, slightly dampen the cloth with water or a specialized screen cleaner. Never spray liquid directly onto the screen.
- **Cabinet:** Use a soft, dry cloth to clean the TV cabinet. Avoid abrasive cleaners or solvents.
- **Remote Control:** Wipe with a soft, dry cloth.

### 2. Software Updates

Periodically check for software updates to ensure optimal performance and access to the latest features. You can usually find this option in the TV's settings menu under "System" or "About TV". Ensure your TV is connected to the internet for updates.

## TROUBLESHOOTING

---

If you encounter issues with your TV, refer to the following common troubleshooting steps before contacting support.

### No Power

- Ensure the power cable is securely connected to both the TV and the electrical outlet.
- Check if the power outlet is working by plugging in another device.
- Try pressing the power button on the TV itself, not just the remote.

### No Picture or Poor Picture Quality

- Verify that the correct input source is selected (e.g., HDMI 1, TV).

- Check all cable connections (HDMI, antenna) for looseness or damage.
- Adjust picture settings (brightness, contrast, color) in the TV menu.
- If using an external device, try connecting it to a different HDMI port or another TV to rule out device issues.

## No Sound or Poor Sound Quality

- Ensure the volume is not muted and is turned up.
- Check audio settings in the TV menu, ensuring the correct audio output is selected (e.g., TV speakers, external audio system).
- If using external speakers or a soundbar, check their power and connections.

## Remote Control Not Working

- Replace the batteries with new AAA batteries.
- Ensure there are no obstructions between the remote and the TV's IR sensor.
- If the remote uses Bluetooth, try re-pairing it with the TV (refer to the TV's settings for pairing instructions).

## Network/Internet Connection Issues

- Check your router and modem to ensure they are powered on and functioning correctly.
- Restart your router and modem.
- If using Wi-Fi, ensure the TV is within range of your router. Try connecting via Ethernet cable if possible.
- Verify Wi-Fi password if prompted.

## SPECIFICATIONS

Feature	Detail
Brand	Philips
Model	55PUG8929/78
Screen Size	55 Inches
Display Technology	4K UHD, LED, IPS
Resolution	3840 x 2160 Pixels (4K)
Refresh Rate	144 Hz
Response Time	8 Milliseconds
Viewing Angle	178 Degrees
Aspect Ratio	16:9
Contrast Ratio	1:200,000
Operating System	Titan OS
Memory Storage Capacity	8 GB
Special Features	Dolby Atmos / DTS-X, HDR10+/HLG/HDR10, Titan OS, Ambilight
Audio Output Power	40 Watts (RMS)



Feature	Detail
Surround Sound Channels	2.0
Connectivity Technology	HDMI, USB, Wi-Fi, Bluetooth
HDMI Ports	4 (HDMI 2.1 compatible)
USB Ports	2
Other Connections	1 Audio L-R, 1 RF (Antenna), 1 SPDIF (Optical Audio), 1 Headphone Output, 1 Ethernet RJ-45
Wireless Connectivity	Bluetooth 5.2, Wi-Fi Dual Band
Voltage	110 Volts, 220 Volts
Energy Efficiency Label	A (ENCE)
Product Dimensions (without stand)	123 x 8.1 x 72 cm (W x D x H)
Product Weight (without stand)	14.2 kg
Product Weight (with stand)	14.6 kg
Color	Black
Certification	INMETRO
Year	2025

## WARRANTY INFORMATION

Your Philips Smart TV model 55PUG8929/78 comes with a **1-year manufacturer's warranty**. This warranty covers defects in materials and workmanship under normal use. Please retain your proof of purchase for warranty claims. For detailed terms and conditions, refer to the legal and safety leaflet included in your package.

## CUSTOMER SUPPORT

For further assistance, technical support, or warranty claims, please contact Philips customer service. You can find contact information on the Philips official website or in the documentation provided with your TV.

**Philips Official Website:** [www.philips.com](http://www.philips.com)

© 2025 Philips. All rights reserved.

This manual is for informational purposes only. Specifications are subject to change without notice.