

[Manuals.plus](#) /

› [Baby Einstein](#) /

› Baby Einstein 4-in-1 Kickin' Tunes Music & Language Discovery Activity Gym Instruction Manual

Baby Einstein 11749

Baby Einstein 4-in-1 Kickin' Tunes Music & Language Discovery Activity Gym Instruction Manual

[Safety Warnings](#)

[Components](#)

[Setup & Modes](#)

[Operation](#)

[Maintenance](#)

[Specifications](#)

[Warranty &](#)

[Support](#)

INTRODUCTION

Thank you for choosing the Baby Einstein 4-in-1 Kickin' Tunes Music & Language Discovery Activity Gym. This versatile playmat is designed to grow with your baby, offering engaging activities from birth through toddlerhood. It features a musical piano, interactive toys, and multiple play modes to support sensory development and early learning skills.

SAFETY WARNINGS

WARNING: This toy produces flashing lights that may trigger epileptic seizures in sensitive individuals.

- Always supervise your child during play.
- Ensure all components are securely assembled before use.
- Do not use this product if any parts are damaged or missing.
- Keep packaging materials away from children to prevent suffocation hazards.

COMPONENTS INCLUDED

The Baby Einstein 4-in-1 Kickin' Tunes Music & Language Discovery Activity Gym includes the following:

- Activity Playmat
- Removable Piano Toy
- Overhead Arch with Toy Loops
- Tummy Time Cushion
- 7 Detachable Sensory Toys (including a textured music note, baby-safe mirror, flash cards, crinkle

toy, rattle, and soft book)



Figure 1: Overview of the playmat with its 7 detachable sensory toys, including a textured music note, baby-safe mirror, flash cards, crinkle toy, rattle, and soft book.

SETUP & PLAY MODES

The activity gym is designed for easy assembly and offers four distinct play modes to adapt to your baby's growth and developmental stage.

1. **Unpacking:** Remove all components from the packaging.
2. **Assemble Playmat:** Lay the activity playmat on a flat, stable surface. Attach the overhead arch securely to the designated points on the mat.
3. **Attach Toys:** Hang the 7 sensory toys from the loops on the overhead arch. Ensure they are within reach for your baby.
4. **Position Piano:** The piano can be positioned at the end of the mat for kick-and-play, or rotated for seated play.

1



Laying

2



Sitting

3



Tummy Time

4



Take Along

Figure 2: The 4-in-1 design supports various play modes: Laying, Sitting, Tummy Time, and Take-Along.

Understanding the 4 Play Modes:

- **Lay and Play:** For newborns, position the baby on their back under the arch. The piano can be placed at their feet for kicking, and hanging toys provide visual and tactile stimulation.



Figure 3: Baby engaging in Lay and Play mode, interacting with the piano using their feet.

- **Tummy Time:** Use the included cushion to support your baby during tummy time. The piano can be positioned for hand play, and the hanging toys encourage reaching and grasping.



Figure 4: Baby enjoying Tummy Time, reaching for the interactive piano keys.

- **Seated Play:** As your baby grows and can sit independently, rotate the piano to an upright position. This allows them to sit and play the piano with their hands.



Figure 5: The piano can be rotated for comfortable seated play as your child develops.

- **Take-Along Piano:** The piano toy is detachable, allowing your child to carry it and play music anywhere.

Apprenez en 4 langues : anglais, espagnol, allemand et français



Figure 6: The piano toy detaches for portable musical fun.

OPERATION

Musical Piano Features:

- **Magic Touch Technology:** The piano keys respond to gentle kicks, taps, and presses, allowing babies to create music easily.



Figure 7: The Magic Touch piano keys respond to your baby's touch.

- **Sounds and Music:** The piano offers over 70 sounds and activities, with more than 25 minutes of continuous music.
- **Language Discovery:** The piano introduces numbers and animal sounds in four languages: English, Spanish, German, and French.



Figure 8: The piano promotes language development in four different languages.

Interactive Toys:

The 7 detachable sensory toys are designed to stimulate various senses and encourage exploration:

- **Textured Music Note:** Provides tactile stimulation.
- **Baby-Safe Mirror:** Encourages self-discovery.
- **Flash Cards:** Introduce visual concepts.
- **Crinkle Toy:** Engages auditory senses.
- **Rattle:** Produces sounds and encourages grasping.
- **Soft Book:** Features colorful images and textures.

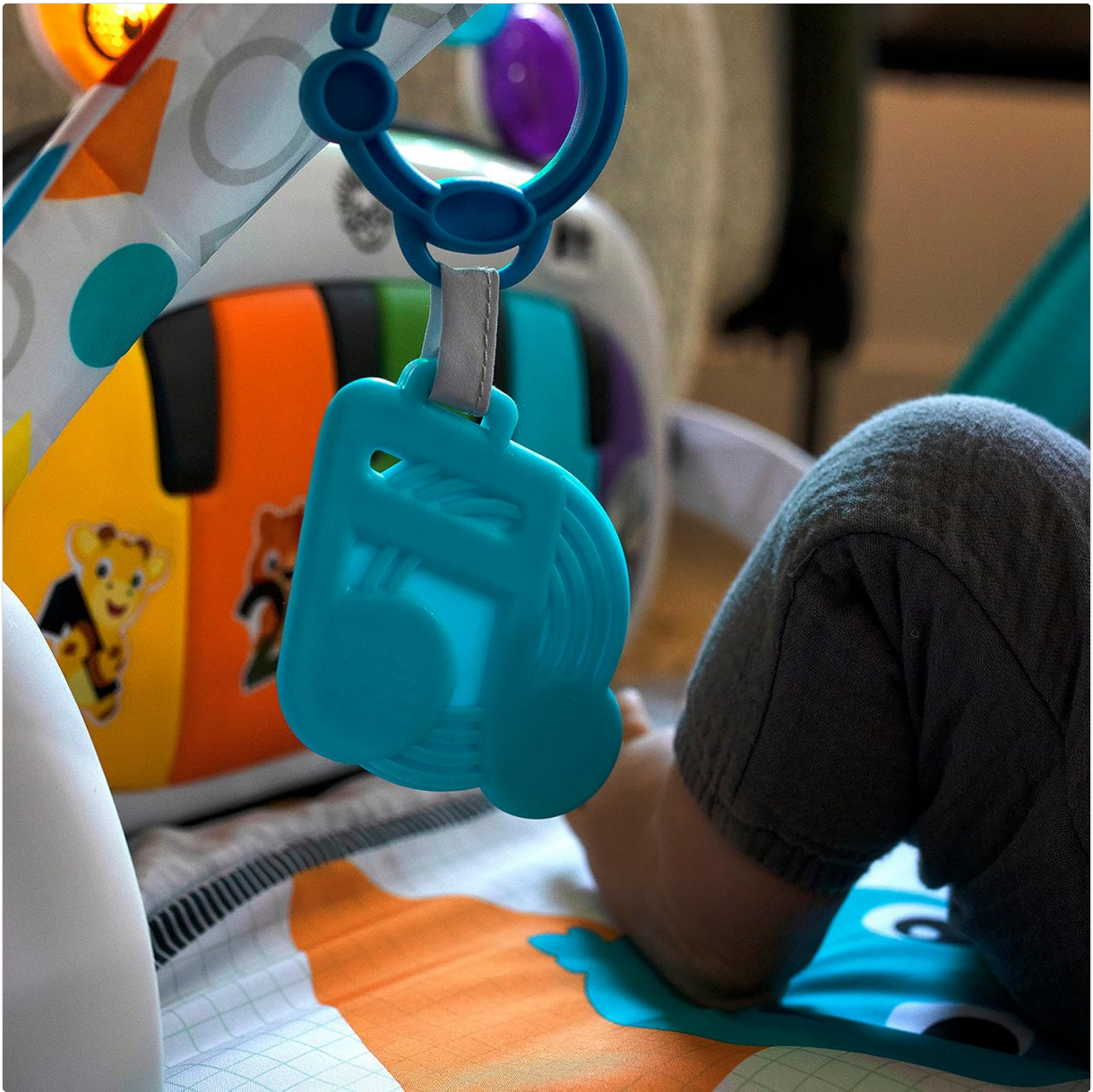


Figure 9: One of the detachable toys, a frog with musical notes, designed for sensory engagement.



Figure 10: A hanging flash card toy with a zebra illustration, promoting visual recognition.



Figure 11: A triangle-shaped rattle toy, designed to engage auditory senses.



Figure 12: A textured music note toy, offering tactile exploration.



Figure 13: The baby-safe mirror toy encourages self-discovery and interaction.



Figure 14: The tummy time cushion provides comfortable support for infants.



Figure 15: A soft book toy with engaging illustrations for early visual stimulation.

MAINTENANCE

- **Mat Cleaning:** The activity mat is machine washable. Use cold water on a gentle cycle and air dry. Do not bleach.
- **Toy Cleaning:** Wipe down all plastic and electronic toys with a damp cloth and mild soap. Air dry thoroughly. Do not immerse electronic components in water.
- **Storage:** When not in use, disassemble the gym and store it in a clean, dry place away from direct sunlight.

SPECIFICATIONS

Feature	Detail
Brand	Baby Einstein
Model Number	11749
UPC	074451117495
Material Type	Cotton
Item Weight	1.45 Kilograms
Item Dimensions (L x W x H)	86.4 x 68.6 x 45.7 centimeters
Recommended Maximum Age	36 months
Power Source	Battery
Battery Type	AA Batteries

Number of Batteries Required	3 AA batteries
Educational Objective	Promotes sensory development and early childhood learning skills
Theme	Music and activity, educational characters



Figure 16: Product dimensions for the activity gym.

TROUBLESHOOTING

- **No Sound/Lights from Piano:**

- Ensure batteries are correctly installed and not depleted. Replace with new AA batteries if necessary.
- Check that the power switch on the piano is in the 'ON' position.
- Verify that the volume is not set to the lowest setting.

- **Toys Not Hanging Properly:**

- Ensure the toy loops are securely fastened to the overhead arch.

- **Mat Appears Uneven:**

- Ensure the playmat is placed on a completely flat surface.

WARRANTY & SUPPORT

This Baby Einstein product comes with a **12-month manufacturer's warranty** from the date of purchase.

Please retain your proof of purchase for warranty claims.

For further assistance, troubleshooting, or to inquire about replacement parts, please contact Baby Einstein customer support through their official website or the retailer where the product was purchased.