

Lvifur B0FP97HK37

Lvifur 360° Swivel Jewelry Cabinet Instruction Manual

Model: B0FP97HK37 | Brand: Lvifur

1. INTRODUCTION

Thank you for choosing the Lvifur 360° Swivel Jewelry Cabinet. This versatile unit combines a full-length mirror, a comprehensive jewelry organizer, and a storage rack with movable wheels. It features a side sliding door with a built-in 3-color LED light strip for enhanced visibility. This manual provides essential information for assembly, operation, maintenance, and troubleshooting to ensure optimal use and longevity of your product.



Figure 1: The Lvifur 360° Swivel Jewelry Cabinet, showcasing its full-length mirror and internal storage with LED lighting, positioned in a room.

2. SAFETY INFORMATION

- Always use both hands when moving the cabinet to prevent tipping.
- Be cautious when adjusting the mirror to avoid breakage.
- Keep the cabinet away from heat sources and moisture to prevent damage to the mirror and wooden frame.
- Ensure the wheels are locked when the cabinet is in a stationary position to prevent accidental movement.

3. SETUP

The main body of the Lvifur Jewelry Cabinet is pre-assembled. The setup process primarily involves attaching the base and bracket. Please follow the included installation accessories and instructions carefully.

3.1 Assembly Steps

1. Unpack all components and verify against the parts list provided in the packaging.
2. Attach the base to the main cabinet body using the provided screws and tools.
3. Secure the bracket to the base, ensuring it is stable and level.
4. Carefully place the cabinet upright.
5. Remove any protective films from the mirror surface.

3.2 Assembly Video

Video 1: Official Lvifur Jewelry Cabinet overview, demonstrating its features and ease of use. This video provides a visual guide to the product's functionality.

4. OPERATING INSTRUCTIONS

4.1 Full-Length Mirror

The cabinet features a high-definition, frameless, full-length mirror. This allows you to view your entire outfit from head to toe, making it convenient for checking your appearance before leaving home.

4.2 Side Sliding Door & Internal Storage

To access the internal storage, gently slide the mirror door to the side. The interior is designed with various compartments for organizing jewelry and cosmetics. The premium velvet lining protects your items from scratches.

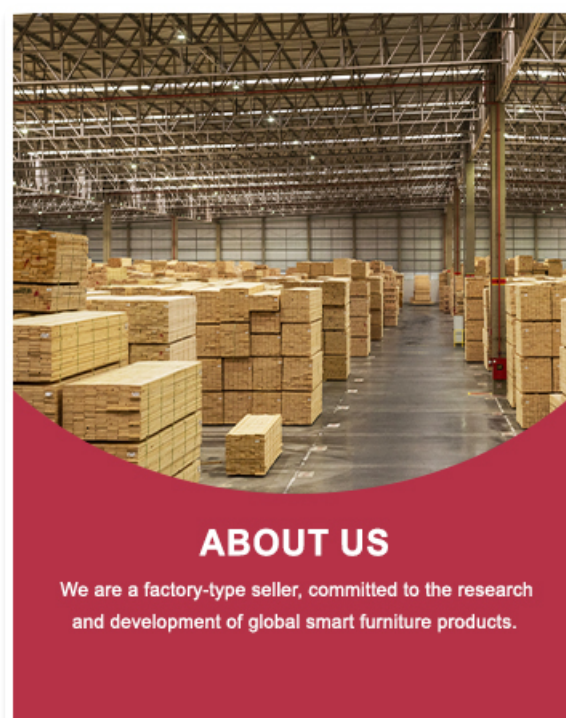


Figure 2: The side sliding door mechanism, allowing access to the organized interior of the cabinet.

4.3 3-Color LED Lights

The internal LED light strip offers three adjustable colors (white, blue, yellow) to suit your preference and lighting needs. The lights automatically turn on when the door is opened. Use the control button inside to cycle through the color options.

3-COLOR LED LIGHTS ADJUSTABLE



Figure 3: Demonstrates the three distinct LED light settings available within the cabinet for optimal visibility.

4.4 Rear Shelves & Bottom Drawer

The back of the cabinet features multiple shelves and three photo frames, providing additional storage for larger items such as bags, shoes, or books. A bottom drawer offers concealed storage for various accessories.



Figure 4: The back of the cabinet with multiple shelves for storing various items.

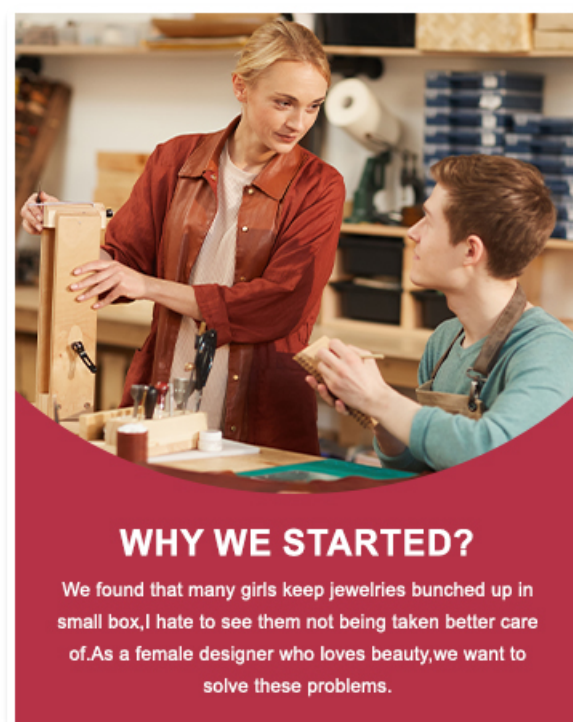


Figure 5: The spacious bottom drawer, ideal for discreetly storing personal belongings.

4.5 Movable Wheels & Lockable Feature

Equipped with four movable wheels, the cabinet can be easily relocated between rooms. Each wheel includes a locking mechanism to secure the cabinet in place, preventing unintended movement. The side of the mirror also features a key lock to secure your valuables inside the cabinet.

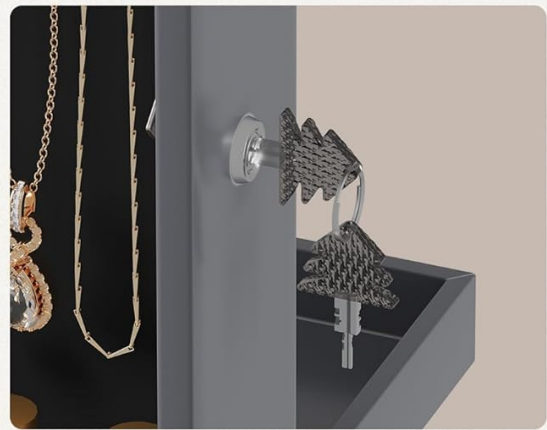
PRODUCT FEATURES



360° Rotating



3 Photo Frames On The Back



Lockable

Figure 6: Key features including 360° rotation, lockable access, and integrated photo frames.

5. MAINTENANCE

- **Cleaning the Mirror:** Use a soft, lint-free cloth and a glass cleaner. Spray the cleaner onto the cloth, not directly onto the mirror, to avoid streaks or damage to the frame.
- **Cleaning the Frame:** Wipe the wooden frame with a soft, damp cloth. Avoid abrasive cleaners or harsh chemicals that could damage the finish.
- **Internal Lining:** The velvet lining can be gently vacuumed with a brush attachment or dabbed with a slightly damp cloth to remove dust.
- **Wheel Maintenance:** Periodically check the wheels for any debris and clean as necessary to ensure smooth rotation. Ensure the locking mechanisms are functioning correctly.

6. TROUBLESHOOTING

- **Mirror door sticks or is difficult to slide:** Check the sliding tracks for any obstructions or debris. Ensure the cabinet is on a level surface.
- **LED lights not working:** Verify that the power cable is securely plugged in. Check if the light control button is functioning.
- **Cabinet wobbles or is unstable:** Ensure all assembly screws are tightened. Confirm the cabinet is placed on a flat, stable surface and the wheels are locked.
- **Wheels do not move smoothly:** Inspect wheels for trapped hair or debris. Clean the wheels and ensure the locking mechanism is disengaged for movement.

7. SPECIFICATIONS

Brand	Lvifur
Model	B0FP97HK37
Color	Grey
Product Dimensions	14.6"D x 14.6"W x 61.2"H (37cm D x 37cm W x 155.4cm H)
Material	Wood (FSC-certified frame)
Special Features	Built-in LED light, HD Real Glass Frameless Mirror, Large Storage Capacity, Explosion-proof Film, Premium Elasticated Velvet Pockets, Acrylic Storage Box, Movable Wheels, Lockable
Mounting Type	Floor Mount (Freestanding)
Assembly Required	Yes (Main body pre-assembled)

DIMENSION



Figure 7: Dimensional overview of the jewelry cabinet, including height, width, and depth measurements.

8. WARRANTY AND SUPPORT

For any questions, concerns, or support needs regarding your Lvifur 360° Swivel Jewelry Cabinet, please contact Lvifur customer service. Refer to your purchase documentation for specific warranty details and contact information.

Documents - Lvifur – B0FP97HK37
no relevant documents