

Jesebang YT18

Jesebang AI Translation Earbuds YT18 User Manual

Model: YT18

1. INTRODUCTION

Thank you for choosing the Jesebang AI Translation Earbuds YT18. These earbuds are designed to provide instant voice translation, high-quality audio, and comfortable wear for various communication and entertainment needs. This manual provides detailed instructions for setup, operation, and maintenance to ensure optimal performance.

2. PACKAGE CONTENTS

Please check the package for the following items:

- Jesebang AI Translation Earbuds (L/R)
- Charging Case
- USB-C Charging Cable
- User Guide for YT18

Ergonomic Design

Il design con gancio auricolare di queste cuffie rende l'esperienza di utilizzo più confortevole.



Image: Contents of the Jesebang AI Translation Earbuds package, including the earbuds, charging case, USB-C cable, and user guide.

3. PRODUCT OVERVIEW

The Jesebang AI Translation Earbuds YT18 feature an ergonomic design for comfortable wear and integrate advanced technology for clear audio and accurate translation.

Noise Reduction and Microphones

The earbuds are equipped with Feedforward and Feedback ENC (Environmental Noise Cancellation) microphones to ensure clear audio input and output, crucial for accurate translation and calls.



Image: A detailed view of the earbud, indicating the locations of the Feedforward and Feedback ENC microphones, essential for noise reduction and multi-language translation.

Ergonomic Design

The earbuds feature an ear hook design that adapts to various ear shapes, providing a secure and comfortable fit even during extended use.

Comfortable to wear

They adapt to various ear shapes for a comfortable fit, even during extended use.

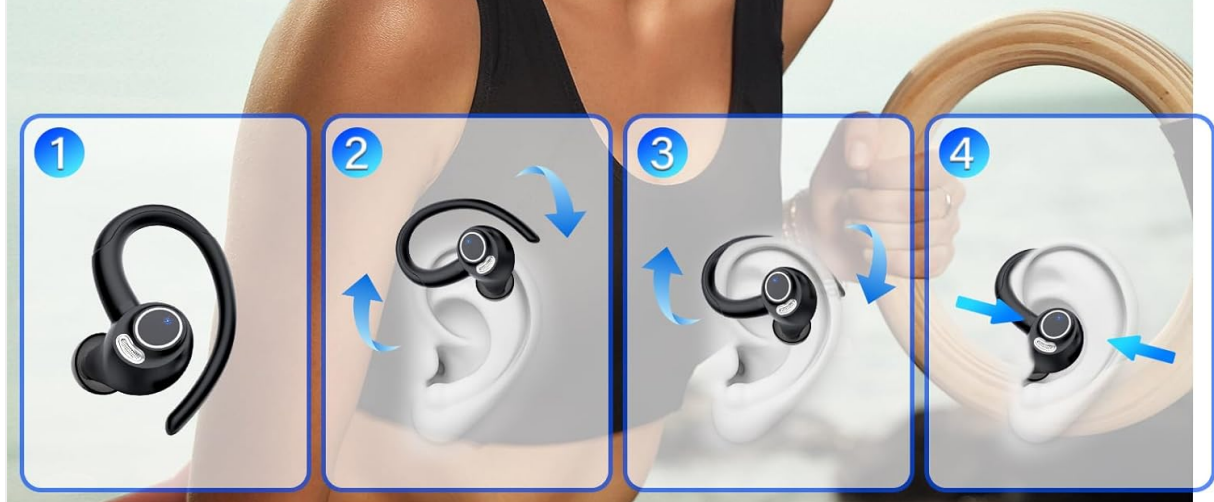


Image: A woman wearing the earbuds, illustrating their comfortable and secure fit. A diagram shows the four steps for correctly placing the earbuds in the ear.

4. CHARGING THE EARBUDS AND CASE

The earbuds and charging case provide extended battery life. Ensure both are charged before first use.

Battery Life

- **Single Listening Battery Life:** Up to 8 hours.
- **Total Battery Life with Charging Case:** Up to 48 hours.

Charging Instructions

Place the earbuds into the charging case. Connect the USB-C cable to the charging case and a power source. The charging case features a power display, and the earbuds have a charging display to indicate their status.

48 Hours Long Battery Life

8_H

Single listening
battery life

48_H

With charging case



Charging Display
of Earbuds



Power Display
of Case



Image: The charging case with earbuds, illustrating the 8-hour single listening battery life and 48-hour total battery life with the case. Charging indicators for both earbuds and the case are shown.

5. APP INSTALLATION AND PAIRING

To utilize the full translation capabilities, you need to install the 'Ear Dance' application on your smartphone and pair the earbuds.

App Download

1. **Method 1 (QR Code):** Scan the QR code provided in the user manual or on the product packaging to download the 'Ear Dance' app.
2. **Method 2 (App Stores):** Search for 'Ear Dance' on major app stores (Google Play Store for Android, Apple App Store for iOS) and download the application.

Bluetooth Pairing

1. Open the Bluetooth settings on your phone and search for nearby Bluetooth devices.
2. Select 'YT18' from the list of available devices to complete the connection.
3. Launch the 'Ear Dance' app. The device should connect automatically within the app.

Controlllo Touch Intelligente



Answer/Hang Up



Answer/Hang Up



PreviousTrack/
Next Song



Answer/Hang Up



Volume+/-



Activate Siri



Image: Instructions for downloading the 'Ear Dance' app via QR code or app stores, and steps for connecting the YT18 earbuds via Bluetooth and within the application.

For direct app download, visit: <https://earjoy.watchfun.cn/app-download-h5?appCode=eardance>

6. OPERATING MODES AND TRANSLATION FUNCTIONS

The Jesebang AI Translation Earbuds YT18 offer 7 distinct modes for various scenarios, supporting translation in 164 languages with up to 98% accuracy.

7 Modes for Various Scenarios

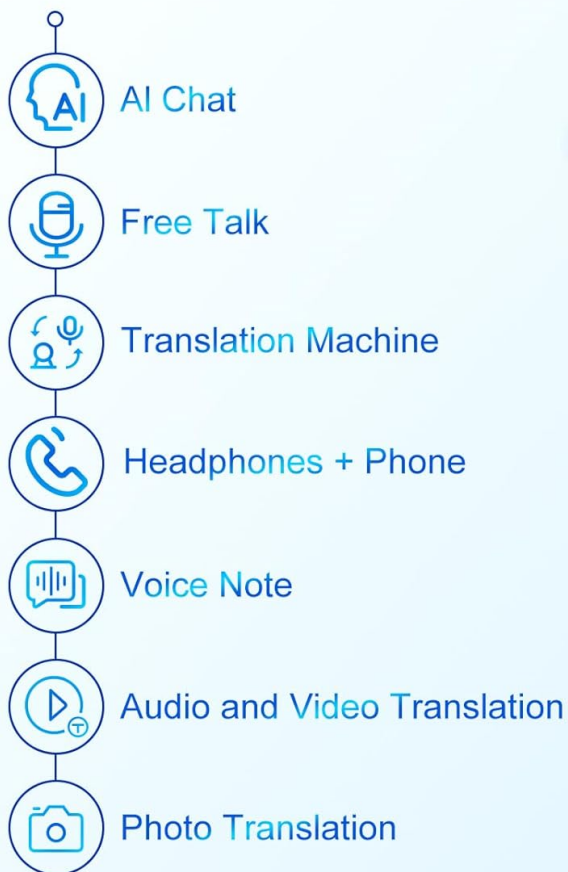


Image: Overview of the seven operational modes available with the earbuds, including AI Chat, Free Talk, and various translation functionalities.

Translation Modes

- **AI Chat Mode:** Open this mode via the app to get immediate answers to daily or work-related questions and quickly find solutions to problems.
- **Free Talk Mode:** Enables natural, continuous conversation with real-time translation.
- **Translation Machine Mode:** Functions as a dedicated translation device.
- **Headphones + Phone Mode:** One person double-clicks the earbud, and the other person taps a button on the phone to start a smooth two-way conversation.
- **Voice Note Mode:** For recording and translating voice notes.
- **Audio and Video Translation Mode:** Understand spoken language in audio and video content instantly, regardless of the language spoken by the other person.
- **Photo Translation Mode:** Recognizes and instantly translates text through the camera.
- **Simultaneous Interpretation:** Ideal for meetings or lectures where real-time interpretation is needed.
- **Live Recording:** Records conversations and provides translated text.
- **In-person Translation:** Facilitates direct communication between two individuals speaking different languages.

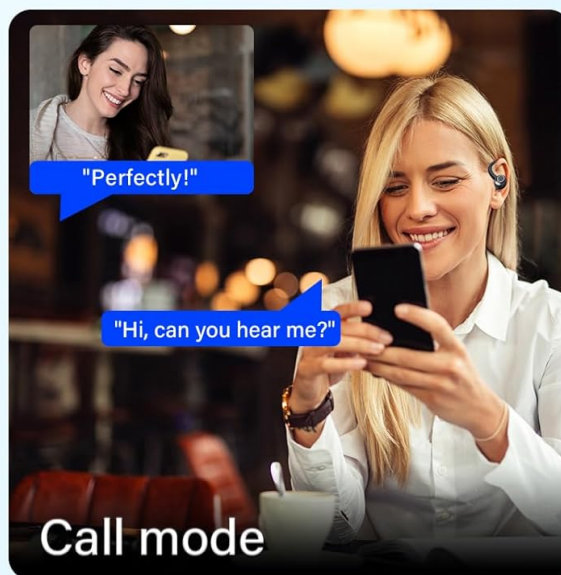
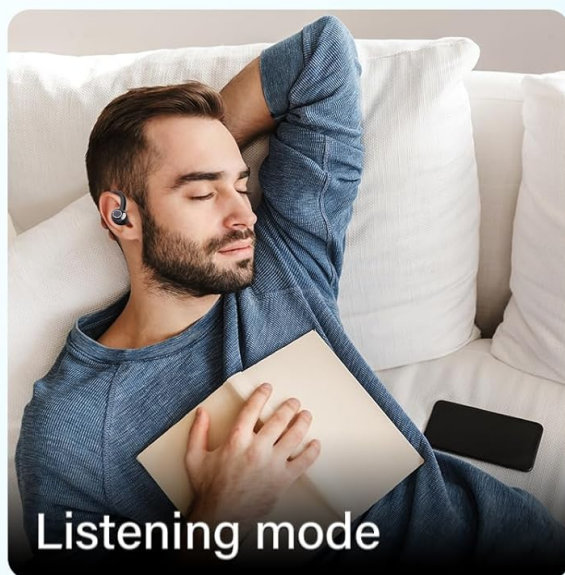
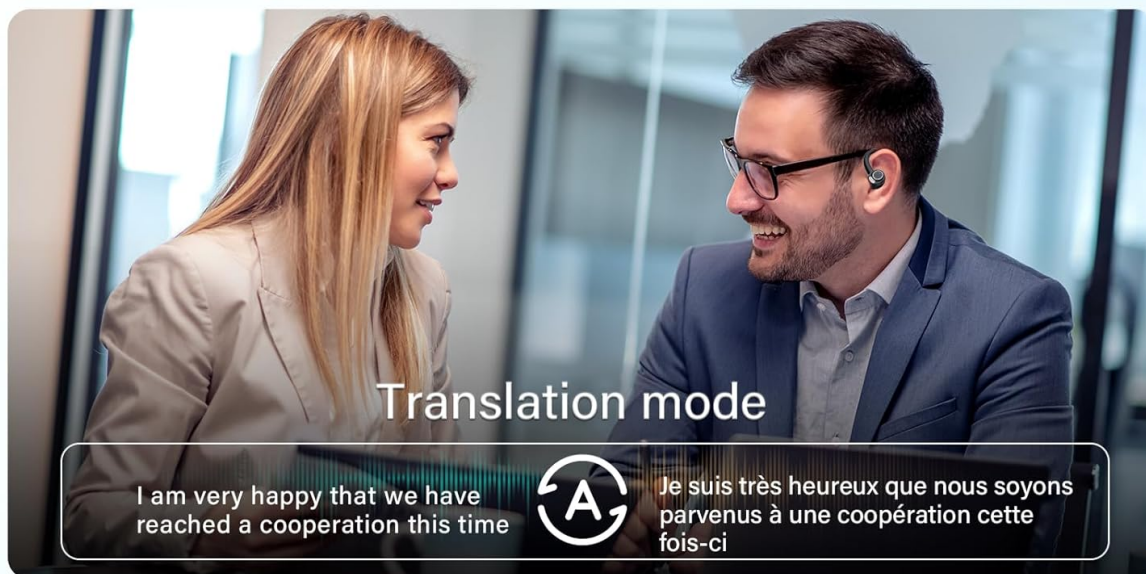


Image: Demonstrates the earbuds in use for translation, listening to audio, and making phone calls.



Image: A visual representation of the real-time translation feature within the app, displaying a conversation translated between English and Spanish.

Tempo reale Traduzione

Prima di iniziare il prossimo esercizio, voglio assicurarmi che tutti abbiano compreso il contenuto precedente.



Prima di passare all'esercizio successivo, voglio assicurarmi che tutti abbiano capito ciò che abbiamo appena trattato.



Image: The app interface demonstrating the voice and video translation mode during a video call, allowing users to understand different languages instantly.

Modalità di traduzione vocale e video

Indipendentemente dalla lingua parlata dall'altra persona, puoi capirla immediatamente e rispondere senza esitazione.



Image: A user demonstrating the photo translation feature by scanning text from a book with their smartphone camera.

IPX7

Riduce la corrosione causata da sudore e pioggia, garantendo il normale funzionamento.



Image: Depicts various translation scenarios including simultaneous interpretation, live recording, and in-person translation, highlighting the versatility of the earbuds.

7. AUDIO FEATURES

High Definition Sound Quality

The integrated 14.2mm speaker allows for an advanced sound experience, ensuring clear audio for music and calls.



Image: An exploded diagram of the earbud, showcasing its internal components, particularly the 14.2mm speaker responsible for high-definition sound.

Ultra-clear and Noise-free Calls

Thanks to an advanced voice signal processing system, the sound during calls is crisp and free from unwanted noise.



Image: An earbud placed in an ear, with visual sound waves indicating the clarity and noise-free nature of calls.

8. SMART TOUCH CONTROLS

The earbuds feature intuitive touch controls for managing calls, music, and activating voice assistants.



Image: A visual guide to the smart touch controls on the earbud, detailing actions such as answering calls, changing

tracks, adjusting volume, and activating Siri.

- **Answer/Hang Up Calls:** Single tap.
- **Previous/Next Song:** Double tap (specific earbud for each).
- **Volume +/-:** Triple tap (specific earbud for each).
- **Activate Voice Assistant (Siri/Google Assistant):** Long press.

9. DURABILITY AND WATER RESISTANCE

The earbuds are designed with IPX7 water resistance, which helps reduce corrosion caused by sweat and rain, ensuring normal operation during light exposure to moisture.

48 ore di riproduzione e display LED



Charging Display of Earbuds



8 Hrs
Single Playtime



Power Display of Case



40 Hrs
Total Battery Life of Charging Case



Image: The earbuds shown with water droplets, signifying their IPX7 water resistance rating, which protects against sweat and rain.

10. SPECIFICATIONS

Feature	Detail
Brand	Jesebang
Model	YT18
Connectivity	Bluetooth 5.3
Translation Languages	164
Translation Accuracy	Up to 98%
Single Earbud Playtime	Up to 8 hours
Total Playtime (with case)	Up to 48 hours
Charging Port	USB-C
Battery Type	Lithium Polymer (rechargeable)
Water Resistance	IPX7
Item Weight	140 g
Package Dimensions	10 x 9.7 x 3.9 cm

11. TROUBLESHOOTING

If you encounter issues with your Jesebang AI Translation Earbuds YT18, please refer to the following common problems and solutions:

- **Earbuds not pairing:** Ensure both earbuds are charged and within range of your device. Turn off and on your device's Bluetooth, then try pairing again.
- **No sound:** Check the volume levels on both your device and the earbuds. Ensure the earbuds are correctly connected to your device.
- **Translation not working:** Verify that the 'Ear Dance' app is installed, updated, and the earbuds are connected within the app. Check your internet connection, as translation often requires online processing.
- **Poor sound quality:** Ensure the earbuds are clean and properly seated in your ears. Try resetting the earbuds and reconnecting.
- **Battery draining quickly:** Ensure the charging case is fully charged. Reduce usage of high-power features if possible.

12. CARE AND MAINTENANCE

To ensure the longevity and optimal performance of your earbuds, follow these care guidelines:

- Keep the earbuds and charging case clean and dry. Use a soft, dry cloth to wipe them.
- Avoid exposing the earbuds to extreme temperatures or direct sunlight for prolonged periods.
- Do not use abrasive cleaners or solvents.
- Store the earbuds in their charging case when not in use to protect them and keep them charged.
- Avoid dropping or subjecting the earbuds to strong impacts.

13. CUSTOMER SUPPORT

For further assistance, warranty information, or technical support, please contact Jesebang customer service through the retailer where you purchased the product or refer to the contact details provided in the original product packaging.