

Betopper LPC1218

Betopper LPC1218 LED Stage Light User Manual

Model: LPC1218

1. INTRODUCTION

This manual provides essential information for the safe and effective operation of your Betopper LPC1218 LED Stage Light. This professional-grade par light features 12x18W RGBLA+UV 6-in-1 LEDs, offering a wide color mixing range and high brightness. It supports multiple control modes including DMX512, Auto, Sound-Activated, and Master-Slave, making it suitable for various stage, party, and event lighting applications.

2. SAFETY INFORMATION

- Read all instructions carefully before installation and operation.
- This device is for indoor use only. Do not expose to rain or moisture.
- Ensure the power supply voltage matches the rated voltage of the device.
- Always disconnect from the main power supply before cleaning or servicing.
- Do not operate the device if the power cord is damaged.
- Avoid direct eye exposure to the light source.
- Ensure proper ventilation to prevent overheating. Do not block ventilation openings.
- Installation should be performed by qualified personnel.
- Keep away from flammable materials.

3. PACKAGE CONTENTS

- 1 x Betopper LPC1218 Stage Light
- 1 x Power Cable
- 2 x Brackets
- 2 x Screws

- 1 x User Manual



Image: The Betopper LPC1218 stage light, power cable, mounting brackets, screws, and user manual are shown as included items.

4. PRODUCT OVERVIEW

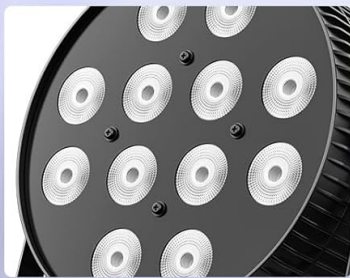
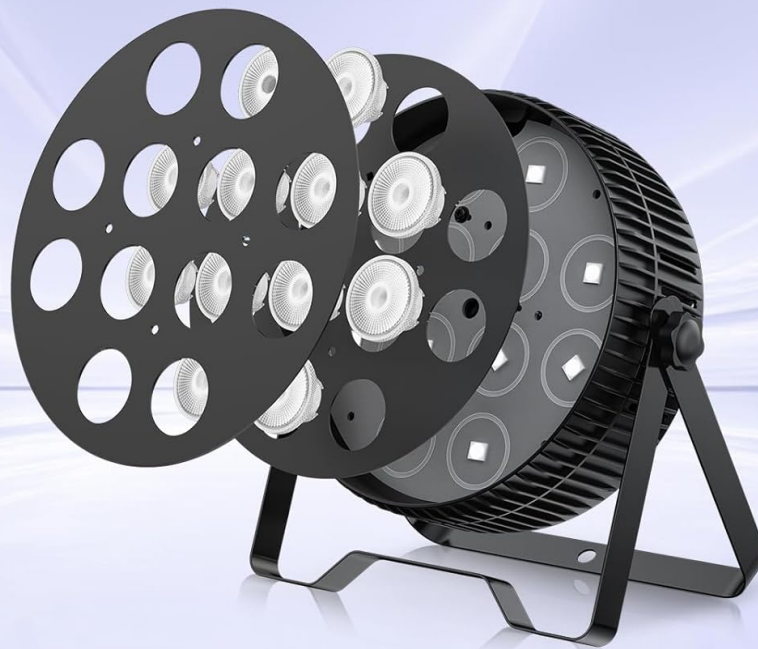
Key Features

- **6-in-1 Color Performance:** Upgraded RGBLA+UV technology combines Red, Green, Blue, Lime, Amber, and UV LEDs for a 12% wider color mixing range, richer tones, and smoother transitions.
- **Enhanced Lime LED:** Produces naturally bright and vivid green tones with a CRI above 95, ensuring professional-grade brightness and color accuracy.
- **Durable Construction:** Crafted with a robust cast aluminum housing and adjustable dual brackets for flexible positioning.
- **Multiple Control Modes:** Supports DMX512, Auto, Sound-Activated, and Master-Slave modes.
- **Long Lifespan & Efficient Cooling:** Equipped with a heat sink and built-in fan for extended LED lifespan up to 100,000 hours.

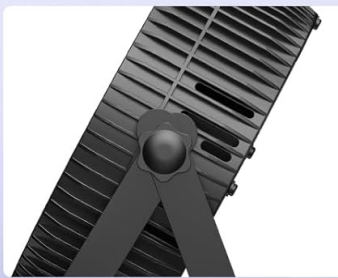
Components

Impact-Resistant Frame Structure

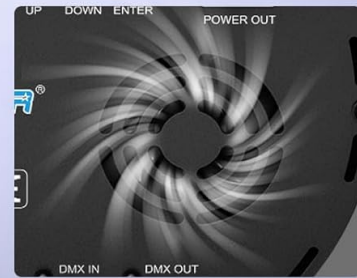
Precision Craftsmanship, Drop-Resistant Chassis, Die-Cast Alloy



High Brightness Beads



Die-Cast Alloy



Cooling Fan

Image: Front view of the Betopper LPC1218 LED Stage Light, showcasing the 12 LED bulbs.



Image: A close-up view of the 12 LED bulbs on the Betopper LPC1218, highlighting their arrangement.

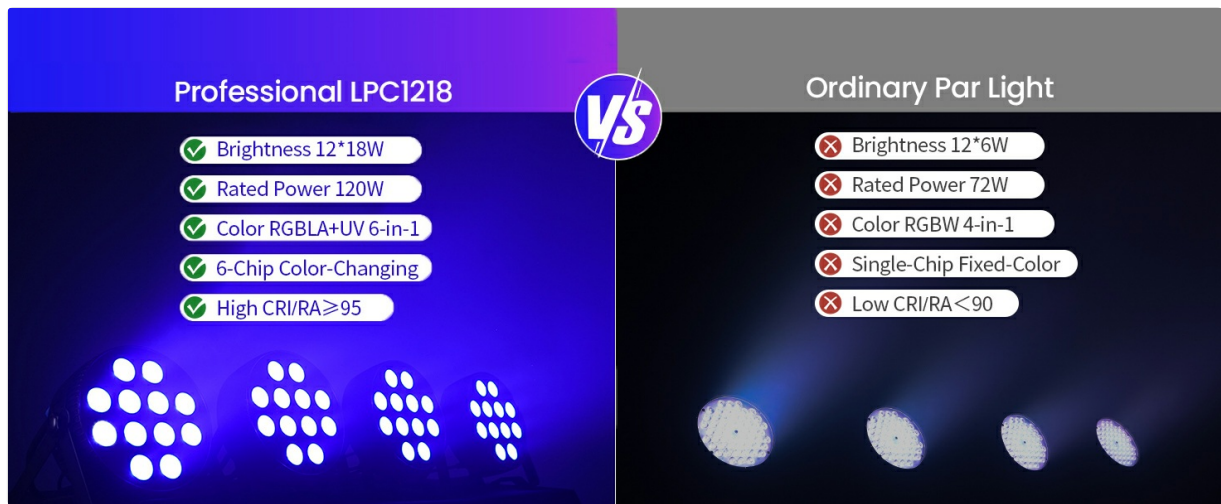


Image: Rear panel of the Betopper LPC1218 LED Stage Light, showing the display screen, menu buttons, power in/out, and DMX in/out ports.

5. SETUP

1. **Unpacking:** Carefully remove the light fixture and all accessories from the packaging. Inspect for any damage during transit.
2. **Mounting:** The fixture comes with adjustable dual brackets.
 - For freestanding use, position the light on a stable, flat surface.
 - For truss or ceiling mounting, use appropriate clamps (not included) and secure the brackets firmly. Ensure the mounting location can support the weight of the fixture.
3. **Power Connection:** Connect the provided power cable to the "POWER IN" port on the rear of the fixture. Plug the other end into a compatible power outlet (AC100V-240V, 50-60Hz).
4. **DMX Connection (Optional):** If using DMX control, connect a DMX cable from your DMX controller to the "DMX IN" port. For daisy-chaining multiple lights, connect from "DMX OUT" of the first light to "DMX IN" of the next.



See in True Colour

Professional Lighting with CRI 95+

- Natural Light Spectrum
- Reduces eye strain & fatigue
- For studio, home & work

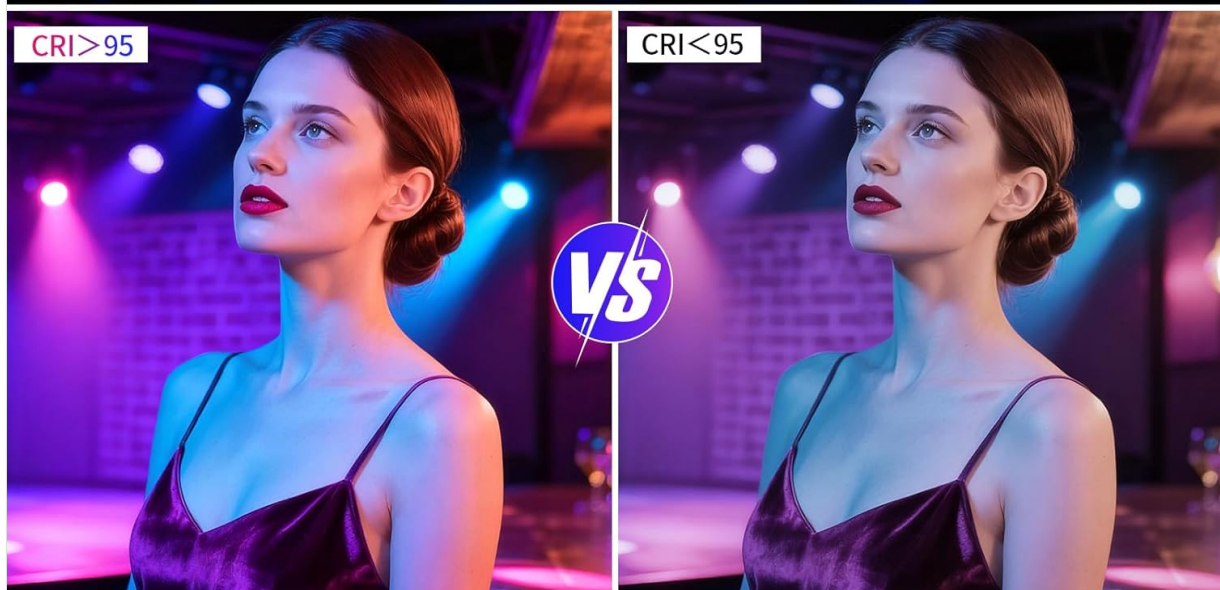


Image: The Betopper LPC1218 LED Stage Light is shown mounted on its adjustable bracket, demonstrating flexible positioning.

6. OPERATING MODES

The Betopper LPC1218 offers several operating modes to suit different applications. Use the "MENU", "UP", "DOWN", and "ENTER" buttons on the rear display to navigate and select modes.

1. DMX512 Control Mode

This mode allows for precise control over color, dimming, and effects using an external DMX controller. The fixture supports 6 or 10 DMX channels. Refer to the DMX channel chart in the full manual for detailed assignments.

Your browser does not support the video tag.

Video: This video demonstrates the various lighting effects and modes of the Betopper LPC1218 Stage Par Light, including DMX control, auto mode, sound-activated mode, pulse mode, gradient mode, jump mode, and strobe mode. It also highlights the 6-in-1 RGBLA+UV mixing color capabilities and 0-100% linear dimming.



Image: Illustration of multiple Betopper LPC1218 lights connected via DMX cables in a master-slave configuration, controlled by a single console.

2. Auto Mode

The light will cycle through pre-programmed color changes and effects automatically. Select "Auto" from the menu and press "ENTER".

3. Sound-Activated Mode

The light reacts to ambient sound or music via its built-in microphone. Select "Sound" from the menu and press "ENTER". Sensitivity can often be adjusted.



Image: The Betopper LPC1218 light is depicted in sound-activated mode, with musical notes and sound waves illustrating its response to music.

4. Master-Slave Mode

Connect multiple LPC1218 units using DMX cables. Set one unit as the "Master" and the others as "Slave". The slave units will mirror the master's operation.

7. MAINTENANCE

- **Cleaning:** Regularly clean the lens and housing with a soft, lint-free cloth to maintain optimal light output. Do not use alcohol or solvents.
- **Inspection:** Periodically check all screws, connections, and cables for tightness and wear.
- **Storage:** When not in use, store the fixture in a dry, dust-free environment.

8. TROUBLESHOOTING

Problem	Possible Cause	Solution
No Power	Power cable not connected; no power from outlet	Check power cable connection; test outlet with another device
No DMX Control	Incorrect DMX address; faulty DMX cable; incorrect mode	Verify DMX address and channel settings; check DMX cable; ensure light is in DMX mode
Light Not Responding to Sound	Sound-activated mode not selected; low sound sensitivity	Select sound-activated mode; adjust sound sensitivity

9. SPECIFICATIONS

Feature	Detail
Light Source	12 x 18W RGBLA+UV 6-in-1 LEDs
Power	18 Watts per LED (Total 216W max)
Voltage	AC100V-240V, 50-60Hz
Material	Aluminum
Control Modes	DMX512, Auto, Sound-Activated, Master-Slave
DMX Channels	6 or 10
CRI	>95
Lifespan	Up to 100,000 hours
Dimensions (L x W x H)	8.03"L x 3.1"W x 11.5"H
Mounting Type	Freestanding, Bracket Mount

10. WARRANTY AND SUPPORT

This Betopper LPC1218 LED Stage Light comes with a 1-year manufacturer's warranty. For technical support, troubleshooting assistance, or warranty claims, please contact Betopper customer service through the retailer where the product was purchased or visit the official Betopper website. Please retain your proof of purchase for warranty validation.