

POLONO P31S

POLONO P31S Bluetooth Thermal Label Printer User Manual

Model: P31S | Brand: POLONO

1. INTRODUCTION

The POLONO P31S is a compact and portable thermal label printer designed for efficient organization in various environments, including home, office, and school. This device utilizes thermal printing technology, eliminating the need for ink or toner, and connects wirelessly via Bluetooth to your smartphone or tablet for easy label creation and printing.



Figure 1: POLONO P31S Label Printer with example labels.

2. PACKAGE CONTENTS

Please verify that all items listed below are included in your package:

- 1x POLONO P31S Label Maker
- 1x Roll of White Labels
- 1x USB Charging Cable
- 1x User Manual
- 1x Guide Card

Package Includes

1 x White Labels

1 x USB Cable

1 x Guide Card

1 x Label Maker

1 x User Manual



Figure 2: Included items in the POLONO P31S package.

3. PRODUCT OVERVIEW & FEATURES

The POLONO P31S is designed for efficiency and portability, offering a range of features to simplify your labeling tasks:

- **Printing Technology:** Thermal printing, requiring no ink or toner.
- **Connectivity:** Bluetooth for wireless connection to iOS (13 or later) and Android devices.
- **Print Speed:** Quick print at 30mm/s.
- **Print Quality:** Good definition with 203 DPI.
- **Built-in Cutter:** For neat and precise label cutting.
- **App Features:** Multiple templates, AI Gallery, text editing, icon integration, barcode/QR code generation.
- **Label Versatility:** Supports various label sizes and designs (monochrome printing - black text only).



Figure 3: Key features of the P31S Label Printer.

4. SETUP

4.1. Loading Label Tape

Follow these steps to correctly load the label tape into your P31S printer:

1. Click the unlock button to open the paper cover.
2. Install the label tape into the paper bin.
3. Leave about 0.2 inches (approximately 5mm) of paper remaining outside the machine and close the cover.
4. Press and hold the power button to turn on. Click the power button again to calibrate the label.



Figure 4: Steps for loading label tape.

4.2. App Installation & Bluetooth Connection

The P31S connects wirelessly via Bluetooth to the 'Labelnize' app. Ensure your device meets the compatibility requirements (iOS 13 or later, Android).

1. Scan the QR code on the guide card or product packaging, or visit the app stores directly to install the 'Labelnize' App. [Download on the App Store](#) | [Get it on Google Play](#)
2. Turn on Bluetooth on your smartphone or tablet.
3. Open the 'Labelnize' App. Click "Unconnected" and select the P31S from the list of available devices to connect.
4. Once connected, you are ready to start creating and printing labels.

Easy-to-Use

Bluetooth Connection via Labelnize App

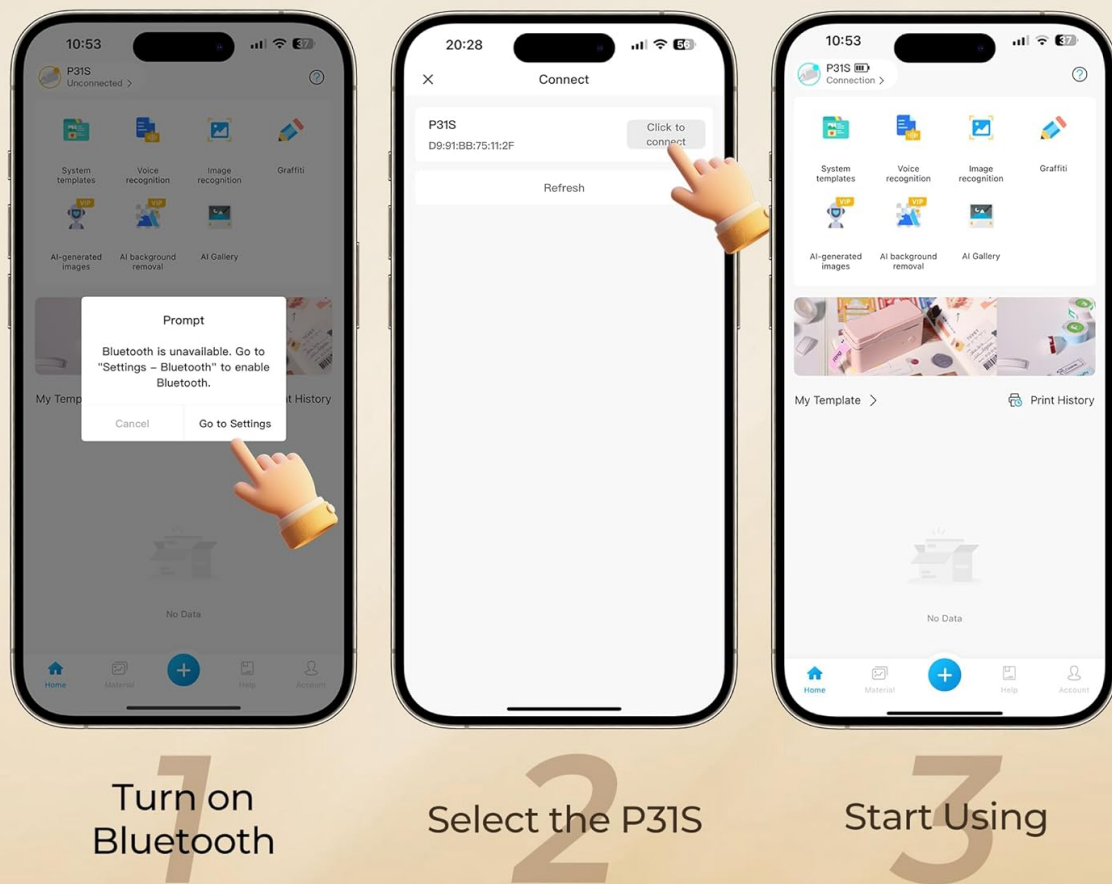


Figure 5: Easy-to-use Bluetooth connection via Labelnize App.

Built-in Cutting Knife

Press the Button
to Cut Labels Neatly

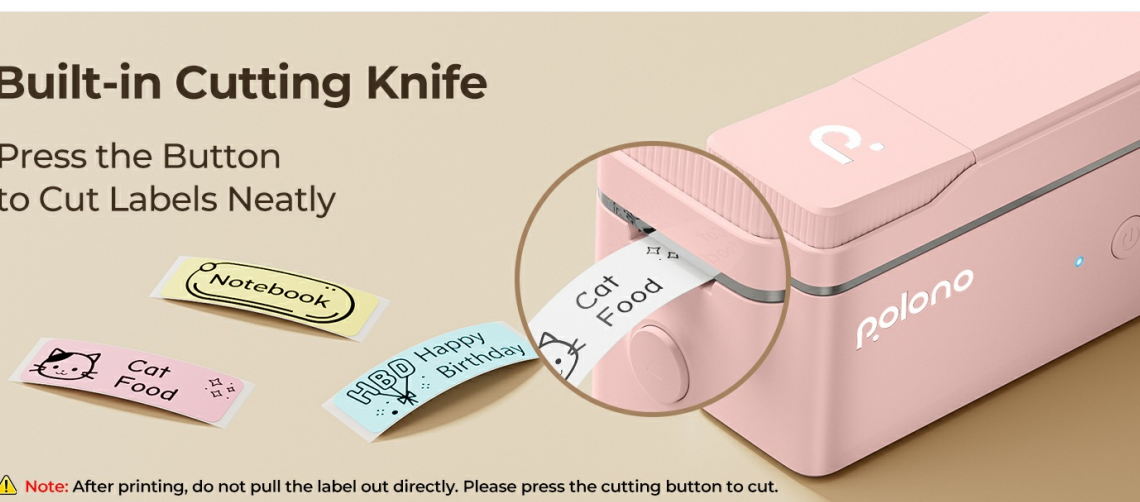


Figure 6: Detailed steps for app connection and label creation.

5. OPERATING INSTRUCTIONS

5.1. Creating Labels

The 'Labelnize' app offers extensive customization options:

- **Templates:** Choose from over 150 system templates for various uses.
- **Fonts & Icons:** Access over 90 fonts and more than 450 tab icons to personalize your labels.
- **Customization:** Add text, icons, borders, images, barcodes, and QR codes. Adjust font size, style, and alignment.
- **AI Gallery:** Utilize AI technology for image and template resources.



Figure 7: Examples of various label designs and customization features.

5.2. Printing Labels

After designing your label in the app:

1. Select the desired label size and paper type within the app.
2. Review the print preview to ensure the label appears as intended.
3. Click the "Print" button in the app to send the design to the P31S printer.

5.3. Cutting Labels

The P31S features a built-in cutting blade for clean label separation:

- After printing, do not pull the label out directly.

- Press the cutting button (or use the built-in cutting blade) to neatly cut the label.



Figure 8: Using the built-in cutting knife for neat labels.

6. LABEL TAPE INFORMATION

For optimal print quality and device performance, use genuine POLONO P31S thermal label tape. These tapes incorporate chip technology to ensure compatibility and proper function.

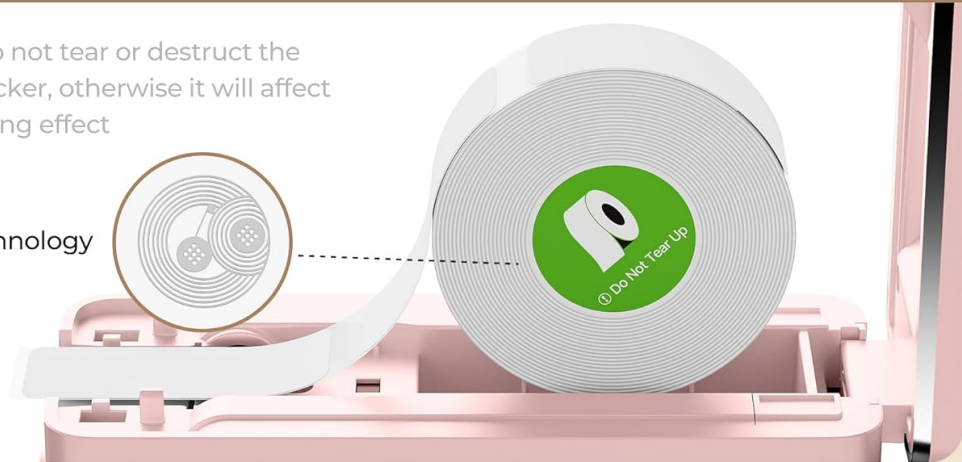
- **Important:** Do not tear or destruct the green sticker on the label roll, as this may affect the printing effect.

Using POLONO Original Thermal Label Tape Can Print with Good Quality

POLONO Genuine P31S Label Maker Tape

Please do not tear or destruct the green sticker, otherwise it will affect the printing effect

Chip Technology



Equipped with Built-in Cutting Blade

Do not pull the label out directly, please press the cutting blade to cut.



Figure 9: Details on using POLONO Original Thermal Label Tape.

7. USAGE SCENARIOS

The POLONO P31S is versatile for various labeling needs:

- **Home Organization:** Label storage bins, pantry items, spice jars, and personal belongings.
- **Office Use:** Organize files, documents, stationery, and office supplies.
- **School Projects:** Create labels for school supplies, binders, and craft projects.
- **Retail/Small Business:** Price tags, product labels, and inventory management.
- **Gifts:** Personalize gifts with custom labels.

Usage Scenarios



Home



Office



Store



Gift

Figure 10: Diverse applications of the P31S Label Printer.

8. SPECIFICATIONS

Specification	Detail
Brand	POLONO
Model Name	P31S
Printing Technology	Thermal
Special Feature	Label printing for organization in school, office, and home environments
Compatible Devices	iOS 13 or later, Android
Item Weight	8.8 ounces
Package Dimensions	5 x 3.07 x 2.64 inches

9. TROUBLESHOOTING

If you encounter any issues with your POLONO P31S Label Printer, please refer to the following common troubleshooting tips:

- **Printer Not Connecting:** Ensure Bluetooth is enabled on your device and the printer is turned on. Restart both the printer and the app.
- **Poor Print Quality:** Check if you are using genuine POLONO thermal label tape. Ensure the label roll is loaded correctly and calibrated. Adjust print density settings in the app if available.
- **Labels Not Feeding:** Verify that the label tape is not jammed and is properly aligned in the paper bin. Ensure enough paper is extended outside the printer.
- **App Issues:** Make sure your 'Labelnize' app is updated to the latest version. Restart the app or reinstall if problems persist.
- **Battery Not Charging:** Use the provided USB cable and a compatible power adapter. Ensure the charging port is clean and free of debris.

10. WARRANTY AND SUPPORT



For warranty information, technical support, or to purchase genuine accessories, please visit the official POLONO website or contact customer service through the 'Labelnize' app. Keep your purchase receipt for warranty claims.





Online Chat: labelnize.com

11. PRODUCT VIDEOS

Video: "You can literally label EVERYTHING with this!" - This video demonstrates the versatility and ease of use of the POLONO P31S label maker, showing various labeling applications.

Related Documents - P31S

	<p>POLONO P31S Portable Thermal Label Printer User Manual</p> <p>Comprehensive user manual for the POLONO P31S Portable Thermal Label Printer, covering setup, operation, maintenance, and troubleshooting.</p>
	<p>Polono P31S Portable Thermal Label Printer User Manual</p> <p>Comprehensive user manual for the Polono P31S portable thermal label printer, detailing setup, operation, connectivity, printing, maintenance, specifications, and troubleshooting. Includes safety information and regulatory compliance statements.</p>

	<p>Polono P10 Thermal Label Printer User Manual and Guide</p> <p>Comprehensive user manual and guide for the Polono P10 Thermal Label Printer, covering setup, specifications, troubleshooting, and warranty information. Learn how to connect and use your inkless Bluetooth label maker.</p>
 <p>• P31S Portable Thermal Label Printer User Manual • Benutzerhandbuch für P31S • Tagbarer Thermo-Etikettendrucker • Imprimante d'Étiquettes Thermique Portable P31S • Manuale dell'utente per la stampante termicoportatile P31S • Manual del Usuario de P31S Impresora Térmica Portátil de Etiquetas</p>	<p>P31S Portable Thermal Label Printer User Manual</p> <p>User manual for the P31S portable thermal label printer, covering setup, operation, troubleshooting, and maintenance. Learn how to connect and use the LABELNIZE app for efficient label printing.</p>
	<p>Polono PL60 Logistics Label Printer User Guide</p> <p>A comprehensive user guide for the Polono PL60 Logistics Label Printer, covering setup, operation, maintenance, and troubleshooting for Windows and Mac users.</p>
<p>PL70e-BT Manual</p>  <p>Scan QR code to download the manual</p> <p>Thank you for choosing PL70e-BT printer. Visit http://www.polono.com for further information.</p>	<p>PL70e-BT Bluetooth Thermal Label Printer User Manual</p> <p>Comprehensive user manual for the POLONO PL70e-BT Bluetooth Thermal Label Printer, covering setup, operation, troubleshooting, and specifications for Windows and Mac.</p>