

comiso M11

comiso M11 Wearable Bluetooth Speaker Instruction Manual

Model: M11

1. INTRODUCTION

Thank you for choosing the comiso M11 Wearable Bluetooth Speaker. This manual provides essential information for setting up, operating, and maintaining your speaker. The M11 is designed for portability and convenience, featuring IPX7 waterproofing, Bluetooth 6.0 connectivity, and a built-in microphone for hands-free calls.



Image 1.1: Overview of the comiso M11 speaker highlighting its key features: clip-on design, Bluetooth 6.0, IPX7 waterproof rating, and built-in microphone.

2. PACKAGE CONTENTS

Please check the package for the following items:

- 1 x comiso M11 Wearable Bluetooth Speaker
- 1 x USB-C Charging Cable
- 1 x Lanyard

- 1 x User Manual (this document)

3. PRODUCT OVERVIEW

The comiso M11 speaker features a compact design with a durable clip for easy attachment. Familiarize yourself with the speaker's components:



Image 3.1: The comiso M11 speaker, demonstrating its small, portable form factor when held in a hand.

Stereo Sound Speaker

Surround yourself with immersive sound



Image 3.2: An exploded diagram illustrating the internal components of the speaker, including the sound driver, designed for stereo sound output.

4. SETUP

4.1 Charging the Speaker

Before first use, fully charge your comiso M11 speaker. Use the included USB-C cable to connect the speaker to a compatible USB power source (e.g., wall adapter, computer USB port).

- The charging indicator light will illuminate during charging.
- A full charge provides over 10 hours of playtime at 50% volume.



Image 4.1: The speaker's USB-C port connected for fast charging, alongside an illustration of its one-hand operable clip.

4.2 Bluetooth Pairing

To connect your speaker to a Bluetooth-enabled device:

1. Ensure the speaker is charged and powered on.
2. Activate Bluetooth on your smartphone or other device.
3. Search for available devices and select "M11" from the list.
4. Once connected, the speaker will indicate a successful pairing (e.g., an audible tone or LED indicator change).

Upgrade Bluetooth 6.0

Get stable wireless connection



Image 4.2: A smartphone screen showing the Bluetooth pairing process, with the M11 speaker visible and ready for connection.

5. OPERATING INSTRUCTIONS

5.1 Power On/Off

- **To Power On:** Press and hold the Power button for approximately 2 seconds.
- **To Power Off:** Press and hold the Power button for approximately 3 seconds.

5.2 Music Playback

Once connected via Bluetooth, you can control music playback from your device or directly on the speaker (if applicable buttons are present).

- **Play/Pause:** Press the Play/Pause button once.
- **Volume Up:** Press the Volume Up button.
- **Volume Down:** Press the Volume Down button.
- **Next Track:** Press and hold the Volume Up button.
- **Previous Track:** Press and hold the Volume Down button.

5.3 Hands-Free Calls

The built-in microphone allows for clear hands-free communication.

- **Answer Call:** Press the Play/Pause button once when a call comes in.
- **End Call:** Press the Play/Pause button once during a call.
- **Reject Call:** Press and hold the Play/Pause button for 2 seconds.

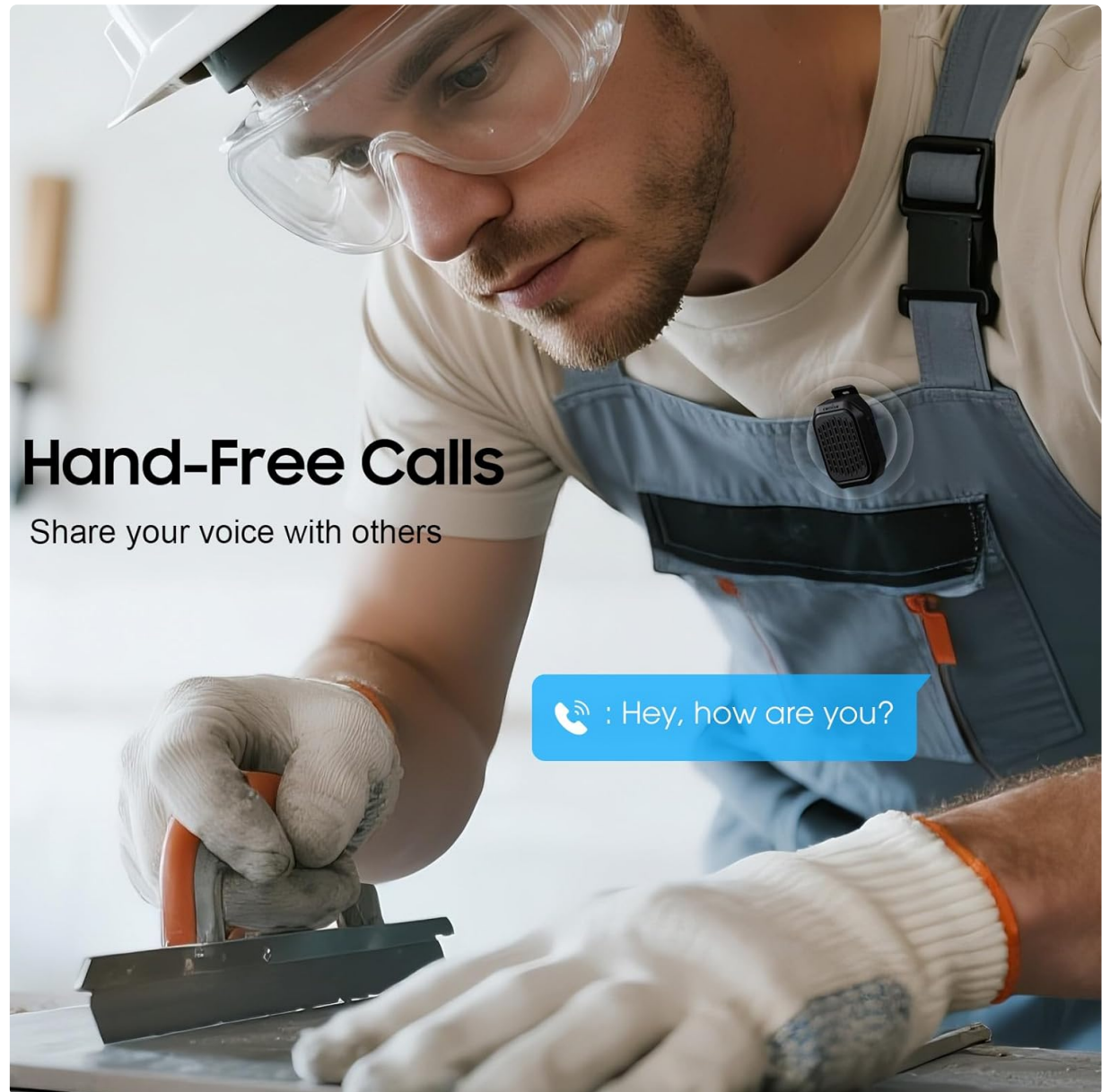


Image 5.1: A user demonstrating hands-free calling with the speaker clipped to their clothing, suitable for active environments.

Hand-Free Calls

Share your voice with others



Image 5.2: The speaker facilitating hands-free communication while driving, clipped securely to a seatbelt.

5.4 True Wireless Stereo (TWS) Pairing

For an enhanced audio experience, you can pair two M11 speakers together to create a stereo sound system.

1. Ensure both M11 speakers are powered on and not connected to any other Bluetooth device.
2. On either speaker, triple-press the Power button to enter TWS pairing mode.
3. The speakers will automatically search for and connect to each other.
4. Once paired, connect your device to one of the speakers via Bluetooth as described in Section 4.2.

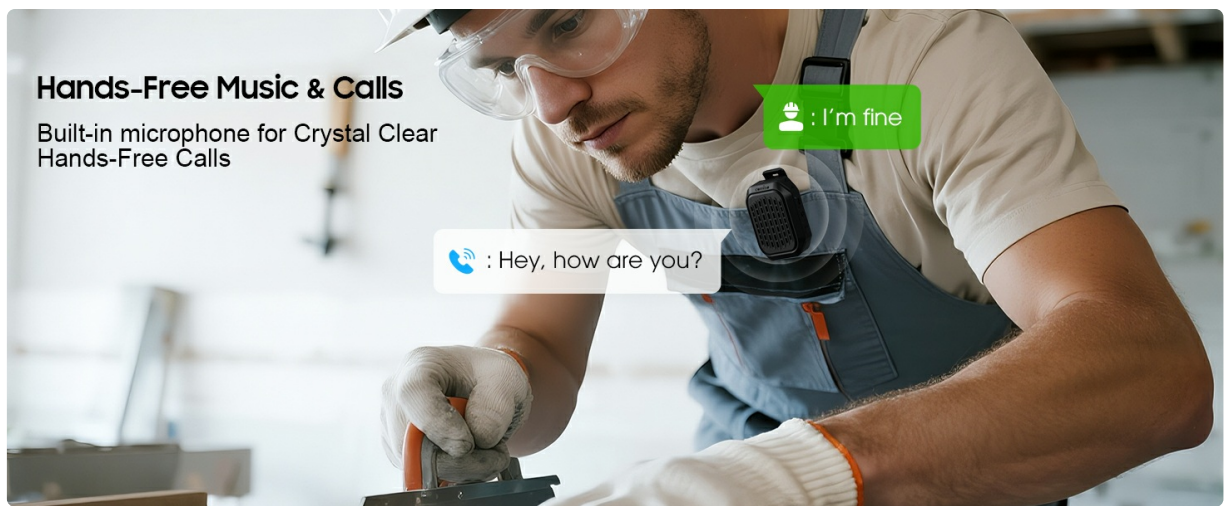


Image 5.3: Two M11 speakers wirelessly connected for a stereo audio experience, enhancing sound immersion.

5.5 Wearing the Speaker

The M11 speaker's anti-slip clip and included lanyard offer versatile wearing options.

- **Clip-on:** Easily attach the speaker to your shirt, backpack strap, belt, or jacket.
- **Lanyard:** Use the lanyard to hang the speaker on your bag, bike, or car.



Image 5.4: A detailed view of the speaker's strong, non-slip clip, designed for secure attachment to various items.



Compact & Lightweight

One hand operation,
listen anywhere
you want.

Image 5.5: A cyclist wearing the compact and lightweight speaker, demonstrating its suitability for outdoor activities.

Portable & Easy-go

The portable lanyard is flexible for you to take your music anywhere.



Image 5.6: Examples of the speaker's portability and ease of use, including being clipped to clothing, a backpack, and stored in a pocket.

6. MAINTENANCE

6.1 Water Resistance (IPX7)

The comiso M11 speaker is IPX7 waterproof, meaning it can be immersed in water up to 1 meter deep for 30 minutes. This makes it suitable for outdoor use and resistant to splashes and rain.

- Ensure the charging port cover is securely closed before exposing the speaker to water.
- Do not intentionally submerge the speaker for extended periods or beyond specified depths.



Image 6.1: The speaker submerged in water, illustrating its IPX7 waterproof capability, alongside an indicator of its 10-hour battery life.

6.2 Cleaning and Storage

- Clean the speaker with a soft, damp cloth. Do not use abrasive cleaners or solvents.
- Store the speaker in a cool, dry place away from extreme temperatures and direct sunlight.
- If not used for a long period, charge the speaker at least once every three months to maintain battery health.

7. TROUBLESHOOTING

If you encounter issues with your comiso M11 speaker, please refer to the following common solutions:

- **Speaker does not power on:**
Ensure the speaker is fully charged. Connect it to a power source using the USB-C cable and try again.
- **Cannot pair with Bluetooth device:**
Make sure the speaker is in pairing mode (check indicator light). Turn off and on Bluetooth on your device. Ensure the speaker is within the 10-meter range. Clear previous Bluetooth connections on your device and try pairing again.
- **No sound or low volume:**
Check the volume levels on both the speaker and your connected device. Ensure the speaker is properly paired. If using TWS, ensure both speakers are connected correctly.
- **Poor call quality:**
Ensure the speaker is close enough for the microphone to pick up your voice clearly. Check for environmental noise interference.
- **Speaker not charging:**
Verify the USB-C cable is securely connected to both the speaker and the power source. Try a

different USB-C cable or power adapter.

8. SPECIFICATIONS

Feature	Detail
Model Name	M11
Speaker Type	Wearable Bluetooth Speaker
Bluetooth Version	6.0
Speaker Maximum Output Power	5 Watts
Water Resistance Level	IPX7 (up to 1 meter for 30 minutes)
Battery Life	Over 10 hours (at 50% volume)
Charging Port	USB-C
Product Dimensions (D x W x H)	1.9" x 2.9" x 1.3"
Item Weight	75 Grams (2.65 ounces)
Maximum Bluetooth Range	10 Meters
Built-in Microphone	Yes
TWS Pairing	Yes

9. SAFETY INFORMATION







Please read and follow these safety guidelines to ensure safe operation and prolong the life of your speaker:

- Do not disassemble, repair, or modify the speaker. This may void the warranty and pose safety risks.
- Keep the speaker away from extreme temperatures, direct sunlight, and open flames.
- Avoid dropping or subjecting the speaker to strong impacts.
- Do not use the speaker while charging in wet conditions.
- Keep out of reach of children.
- Dispose of the speaker and its battery responsibly according to local regulations.

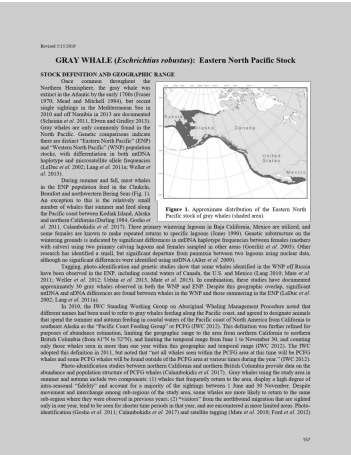
10. WARRANTY AND SUPPORT

For warranty information or technical support, please contact comiso customer service through the retailer where you purchased the product or visit the official comiso website. Please have your model number (M11) and purchase details ready.

Related Documents - M11

	<p>COMISO C15 IPX7 Waterproof Wireless Speaker User Manual</p> <p>Comprehensive user manual for the COMISO C15 IPX7 Waterproof Wireless Speaker (Model 96110). Learn about its features, functions, Bluetooth connectivity, TWS pairing, light modes, specifications, safety guidelines, and troubleshooting tips.</p>
	<p>COMISO C15 Wireless Waterproof Speaker User Manual</p> <p>Comprehensive user manual for the COMISO C15 Wireless Waterproof Speaker, detailing features, operation, safety instructions, and troubleshooting.</p>
	<p>FCC Confidentiality Request for X26L Device by COMISO</p> <p>Confidentiality request letter submitted to the FCC for the X26L wireless speaker by SHENZHEN COMISO DIGITAL TECHNOLOGY LIMITED, detailing requested confidentiality periods for exhibits.</p>
	<p>Comiso E6 Wireless Earbuds - High-Quality Audio with Ergonomic Design</p> <p>Discover the Comiso E6 Wireless Earbuds, featuring Bluetooth 5.0, 800mAh charging case, IPX7 waterproof rating, and noise isolation for an immersive listening experience.</p>
	<p>COMISO C17PRO Wireless Bluetooth Speaker: User Guide and Specifications</p> <p>Comprehensive guide for the COMISO C17PRO Wireless Bluetooth Speaker, covering setup, TWS pairing, troubleshooting, specifications, and warranty information.</p>
	<p>Comiso X26M Wireless Speaker User Manual and Specifications</p> <p>This document provides comprehensive instructions, troubleshooting tips, and specifications for the Comiso X26M wireless speaker, including details on Bluetooth pairing, charging, and warranty information.</p>

Documents - comiso – M11



[pdf] SAR Rating

89 dee allen NMFS NOAA gray whale enp sar final 2018 media fisheries noaa gov dam migration |||
Revised 5/15/2019 GRAY WHALE *Eschrichtius robustus* : Eastern North Pacific
Stock STOCK DEFINITION ... nts and diet of gray whales *Eschrichtius robustus* off
Kodiak Island, Alaska, 2002 2005. Paper SC/M11/AWMP2 presented to the
International Whaling Commission AWMP workshop 28 March-1 April 2011. Gul...
lang:en score:9 filesize: 1.06 M page_count: 10 document date: 2019-06-10

Duke University, Durham, NC

Figure 1. Approximate distribution of the Eastern North Pacific stock of gray whales (shaded area).

Extinction and genetic studies show that some whales identify the WNP, including such areas as coastal waters of Canada, the U.S. (e.g., 2012; Urban et al. 2013). In combination, these studies have shown that the WNP and IOWP. Despite this overlap, significant differences in the WNP and those connecting to the IOWP (Kang et al. 2013). The WNP through the continental shelf to the west coast of North America, where the genetic studies of the WNP off Japan, Korea, and the IOWP show a common wintering ground.

ships on Aboriginal Whaling Management. Procedures noted the whales feeding along the Pacific coast, and agreed to designate 10 coastal waters of the Pacific coast of North America as the "Feeding Group" in PCPO (IWC 2012). This definition was vague, leaving the geographic range to the area from northern 40° to 52°N, leaving the temporal range to the period from June to November. In the same year, a year within this geographic and temporal range in 2011, we noted that "not all whales seen within the PCPO Feeding Group will be found outside of the PCPO area at various

from California and northern British Columbia provide data on the size (Colborn et al. 2012). Gray whales using the Pacific components: 1) whales that frequently return to the area, and 2) whales that are present for a majority of the sightings between 1 June and 1

Stock definition and geographic range
One = common. Occurs along the

Figure 1. Approximate distribution of the Eastern North Pacific stock of gray whales (shaded area).

analyses show that some values identified in the WUP off coast waters of Canada, the U.S. and Mexico (Lang 2010, Mow et al. 2011). In combination, these studies have recorded a total of 12 species of *U. hystrix* in the WUP. The WUP is a large marine ecoregion covering significant NOAA and IANFA differences occurring in the EOP (Lang et al. 2011a).

sen, California and northern British Columbia provide data on several *Calochortus* (e.g. 2017). Grey whales using the study area (i.e. whales that frequently return to the area, display a high degree of site fidelity) are estimated to have a 1 June and 30 November deadline for the study area, since whales are more likely to return to the same areas. If whales do not return to the study area by these dates, they are considered to have moved to other areas (Madsen et al. 2012) and satellite tracking (Madsen et al. 2010; Priede et al. 2010) will be used outside of the PCHD area at various times.

lang:en score:9 filesize: 552.83 K page count: 12 document date: 2018-04-09