

## TECLAST T60Pro

# TECLAST T60Pro 12-inch Android 15 Tablet User Manual

Model: T60Pro

## 1. INTRODUCTION

Welcome to the user manual for your new TECLAST T60Pro 12-inch Android 15 Tablet. This guide provides essential information for setting up, operating, and maintaining your device. Please read it thoroughly to ensure optimal performance and longevity of your tablet.

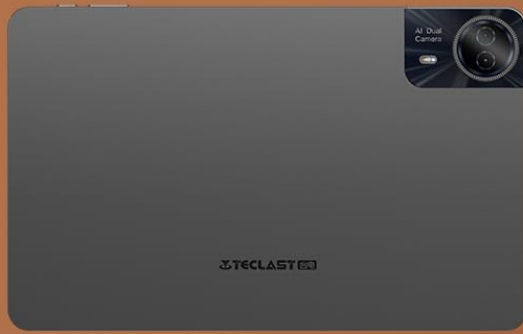
### 1.1 Package Contents

Verify that all items are present in your product package:

- TECLAST T60Pro Tablet
- Snap pin
- Charger & DC Charging Cable
- Teclast User Guide
- Warranty Card

# TECLAST

# T60 Pro



10.97"(L)



## What's in the box:



1



2



3



4



5



6



7

1.Tablet 2.Charger 3.DC Charging Cable 4.Snap pin

5.Teclast User Guide 6.Warranty Card 7.T-Pen

Dimensions :

Size:10.97"(L) ×6.85"(W) ×0.31"(H)

Weight:1.29 Pounds

Image: Contents of the TECLAST T60Pro tablet package, including the tablet, charger, cable, and documentation.

## 2. PRODUCT OVERVIEW

The TECLAST T60Pro is a 12-inch Android 15 tablet designed for a versatile user experience. It features a sleek design and powerful components for both productivity and entertainment.



Image: Front and back view of the TECLAST T60Pro tablet, highlighting its 12-inch screen and dual camera setup.

## 2.1 Physical Features

The tablet features a 12-inch display, an 8MP front camera, and a 13MP rear camera. It includes standard ports for charging and data transfer, along with physical buttons for power and volume control. The device is designed with narrow bezels for an immersive viewing experience.

## 3. INITIAL SETUP

### 3.1 Powering On/Off

- **To Power On:** Press and hold the Power button located on the side of the tablet until the TECLAST logo appears on the screen.
- **To Power Off:** Press and hold the Power button until the power options menu appears. Select 'Power off' and confirm.
- **To Restart:** Press and hold the Power button until the power options menu appears. Select 'Restart' and confirm.

### 3.2 Network Connection (Wi-Fi)

1. Go to **Settings > Network & internet > Wi-Fi**.
2. Toggle the Wi-Fi switch to the 'On' position.
3. Select your desired Wi-Fi network from the list of available networks.
4. Enter the network password if prompted and tap **Connect**.

## 4. OPERATING SYSTEM: ANDROID 15

The TECLAST T60Pro runs on the Android 15 operating system, offering an intuitive and customizable user experience. Android 15 includes features such as enhanced privacy controls, split-screen functionality, and optimized performance.

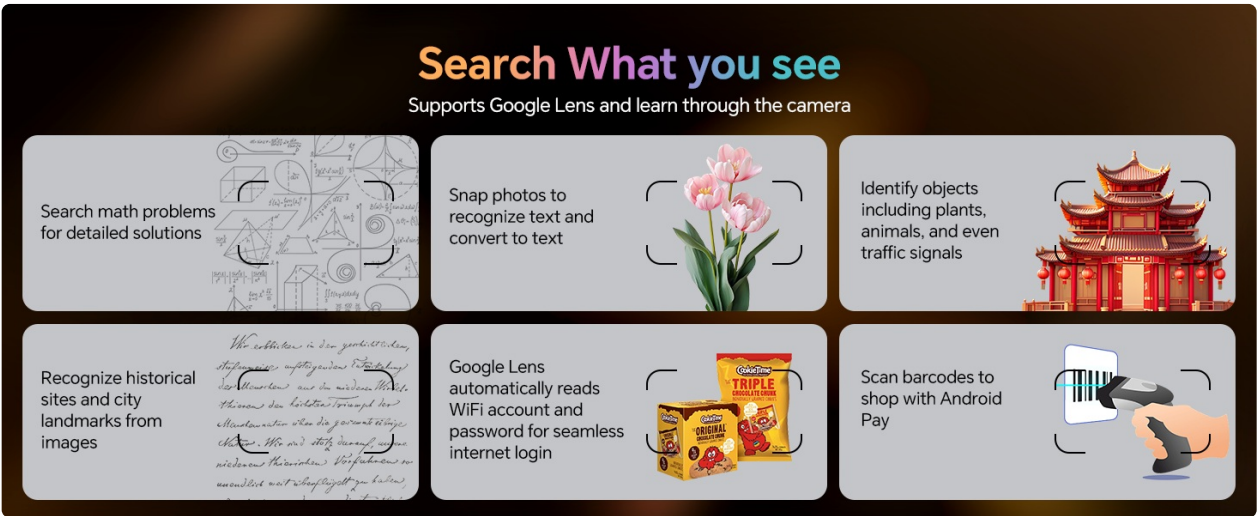


Image: Android 15 interface with various optimization features like Private Space, Single App Screen Recording, Pinnable taskbar, and 64-bit app support.

#### 4.1 Key Features

- **Split-Screen Operation:** Run two applications simultaneously for enhanced multitasking.
- **User Permission Management:** Comprehensive controls over app permissions to protect your data.
- **Parental Controls:** Set limits on usage time and app access for children.

### 5. PERFORMANCE AND STORAGE

The T60Pro is equipped with robust hardware to deliver smooth performance for various tasks, from gaming to productivity.

#### 5.1 Processor

The tablet is powered by the **MediaTek Helio G99 8-core processor**, featuring two Cortex-A76 cores clocked at 2.2GHz for high performance and six Cortex-A55 cores for energy efficiency. The Mali-G57 GPU ensures smooth graphics rendering.





Image: Diagram illustrating the MediaTek Helio G99 processor with its 8-core architecture, 2.2GHz peak frequency, 6nm process, and Mali-G57 GPU.

## 5.2 Memory and Storage

- **RAM:** 20GB (8GB LPDDR4X physical RAM + 12GB virtual RAM) for seamless multitasking.
- **Internal Storage:** 128GB ROM for applications, videos, and music.
- **Expandable Storage:** Supports up to 1TB via a micro-SD card (not included).



Image: The tablet offers 20GB RAM, 128GB ROM, and supports up to 1TB TF card expansion for extensive storage.

## 6. DISPLAY AND AUDIO

### 6.1 Display Features

- **Size:** 12-inch IPS display with narrow bezels.
- **Resolution:** 2000x1200 2K resolution for clear visuals.
- **Technology:** TDDI full-lamination technology and facial recognition support for faster touch response and a slimmer design.
- **Screen Protector:** Comes with a factory-installed tempered glass screen protector.



Image: The 12-inch 2K display of the TECLAST T60Pro, featuring an IPS wide viewing angle and T-Colour 6.0 optimization for vibrant visuals.



Image: The tablet's responsive touch screen, featuring TDDI full lamination, In-cell sensitive touch, and a 90Hz touch sampling rate for smooth interaction.

### 6.2 Audio

The T60Pro is equipped with four speakers, providing an enhanced audio experience for media consumption and video calls.

## 7. CAMERA FEATURES

### 7.1 Photography and Video

- **Rear Camera:** 13MP with autofocus and built-in flash for capturing detailed photos.
- **Front Camera:** 8MP for clear video calls and selfies.



Image: The tablet's camera system, featuring a 13MP rear camera with autofocus and an 8MP front camera for high-quality photos and video calls.

### 7.2 Google Lens Integration

The tablet supports Google Lens, allowing you to:

- Translate text through photos.
- Identify plants, objects, and landmarks.
- Search math problems for solutions.



- Scan barcodes for shopping.

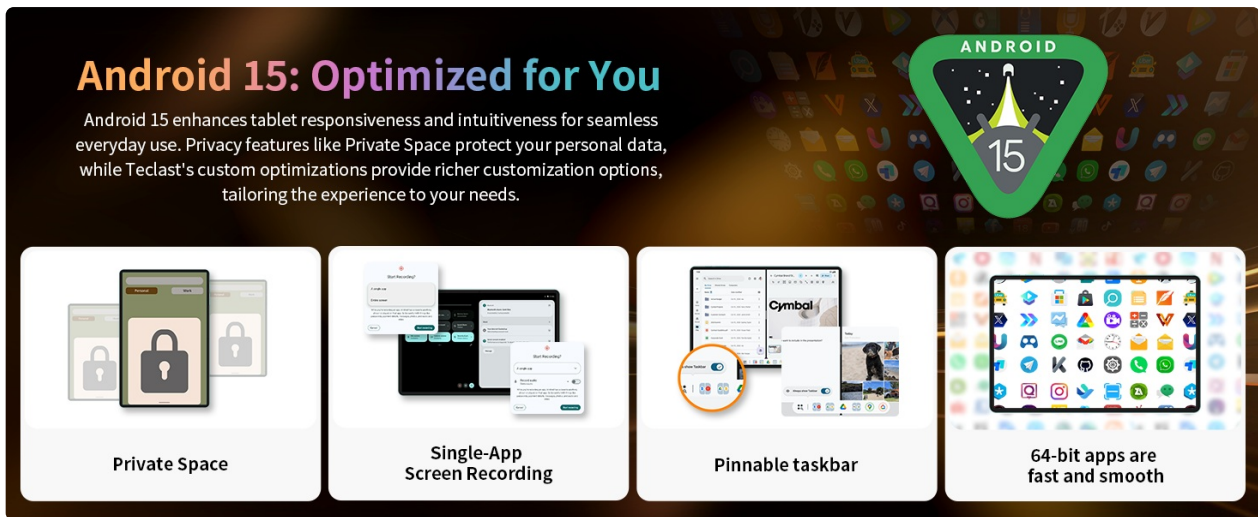


Image: The tablet's Google Lens functionality, enabling text translation, object identification, and real-time recognition.

## 8. BATTERY AND CHARGING

The TECLAST T60Pro is equipped with an 8000mAh high-capacity battery and supports 15W PD fast charging.

### 8.1 Battery Life

Expected usage times on a full charge:

- Video Streaming: Approximately 8.5 hours
- E-book Reading: Approximately 11.5 hours
- Music Playback: Approximately 13.5 hours
- Gaming: Approximately 7.5 hours

### 8.2 Fast Charging

The 15W PD fast charging capability allows for quick recharging, minimizing downtime and ensuring your tablet is ready for use when you need it.



Image: The TECLAST T60Pro tablet being fast-charged, highlighting its 8000mAh battery and 18W USB-PD fast charging, with estimated usage times.

## 9. CONNECTIVITY

### 9.1 Wireless Connectivity

- **Wi-Fi:** Supports dual-band AC Wi-Fi (2.4GHz + 5GHz) for stable and fast internet access.
- **Bluetooth:** Bluetooth 5.2 with support for LDAC, AAC, and SBC codecs for high-quality wireless audio.



Image: The tablet's wireless capabilities, including dual-band AC Wi-Fi and Bluetooth 5.2, enabling seamless connection to networks and accessories.

### 9.2 Mobile Network

The T60Pro supports dual 4G LTE network access (TDD+FDD) and VoLTE calls, allowing for internet connectivity and calls on the go (SIM card not included).



Image: The tablet supports dual 4G LTE and VoLTE, providing mobile network access for internet and calls.

## 10. MAINTENANCE

### 10.1 Cleaning Your Tablet

To keep your tablet in optimal condition:

- Use a soft, lint-free cloth to gently wipe the screen and body.
- Avoid using harsh chemicals, abrasive cleaners, or aerosol sprays.



- Do not allow moisture to enter any openings.

## 10.2 Software Updates

Regularly check for and install software updates to ensure your tablet has the latest features, security patches, and performance improvements. You can usually find this option in **Settings > System > System update**.

## 11. TROUBLESHOOTING

If you encounter issues with your TECLAST T60Pro, refer to the following common solutions:

### 11.1 Tablet Not Powering On

- Ensure the battery is charged. Connect the tablet to the charger and wait a few minutes before attempting to power on.
- Press and hold the Power button for at least 10-15 seconds to force a restart.

### 11.2 Wi-Fi Connection Issues

- Restart your Wi-Fi router and the tablet.
- Forget the network in Wi-Fi settings and reconnect.
- Ensure you are within range of the Wi-Fi signal.

### 11.3 Slow Performance

- Close unnecessary background applications.
- Clear cache for frequently used apps (Settings > Apps > [App Name] > Storage > Clear cache).
- Ensure sufficient storage space is available.

### 11.4 Screen Unresponsive

- Restart the tablet.
- Ensure the screen is clean and free of debris or moisture.

## 12. TECHNICAL SPECIFICATIONS

Feature	Specification
Brand	TECLAST
Model Name	T60Pro
Operating System	Android 15
Screen Size	12 Inches
Screen Resolution	2000x1200 Pixels
Processor	MediaTek Helio G99 (2.2 GHz)
Graphics Coprocessor	Mali-G57 MC2

Feature	Specification
RAM	20GB (8GB LPDDR4X + 12GB virtual)
Flash Memory Size	128 GB
Expandable Storage	Up to 1TB (Micro-SD card)
Wireless Type	802.11ac, 802.11n (2.4GHz+5GHz WiFi)
Bluetooth	Bluetooth 5.2
Mobile Network	Dual 4G LTE (TDD+FDD), VoLTE
Average Battery Life	8 Hours (typical usage)
Item Weight	1.59 pounds
Product Dimensions	10.9 x 6.8 x 0.31 inches

## 13. WARRANTY AND SUPPORT

### 13.1 Manufacturer Warranty

The TECLAST T60Pro comes with a **1-year manufacturer warranty**. This warranty covers defects in materials and workmanship under normal use.

### 13.2 Technical Support

For technical assistance, troubleshooting, or warranty claims, please contact TECLAST customer support. 24/7 technical support is available to provide effective solutions for any quality issues you may encounter. Please refer to the contact information provided on the official TECLAST website or your warranty card for the most up-to-date support channels.

### Related Documents - T60Pro

<div>TECLAST</div> <div>Tabletă Teclast P50 11" 6/128 GB WIFI</div> <div>Instrucțiuni de utilizare</div>	<div><a href="#">Teclast P50 Tablet User Manual and Setup Guide</a></div> <div>This comprehensive user manual and setup guide for the Teclast P50 11" 6/128 GB WIFI tablet provides detailed instructions on initial configuration, button functions, connectivity options, display and sound settings, battery management, safety precautions, and regulatory compliance. Learn how to set up your device, connect to networks, manage applications, and ensure optimal performance.</div>
--------------------------------------------------------------------------------------------------------------------------	---------------------------------------------------------------------------------------------------------------------------------------------------------------------------------------------------------------------------------------------------------------------------------------------------------------------------------------------------------------------------------------------------------------------------------------------------------------------------------------------

