

CaDA C61502W

CaDA Master C61502W Mazda RX-7 Remote Control Powered Building Block Car Instruction Manual

Model: C61502W

1. SAFETY INFORMATION

WARNING: CHOKING HAZARD – Small parts. Not for children under 3 years. This product is recommended for ages 14 and up due to its complexity and small components.

2. PRODUCT OVERVIEW

The CaDA Master C61502W Mazda RX-7 is a highly detailed, 1:8 scale building block model that features remote control capabilities. This set comprises 3305 precision pieces, allowing for the construction of a dynamic and collectible replica of the iconic Mazda RX-7.

Once assembled, the model can be operated remotely, offering forward, reverse, and steering functions. It includes a dedicated motor, remote control, and battery pack for an interactive experience.



Image 2.1: The CaDA Master C61502W Mazda RX-7 building block set, showcasing the completed model, packaging, and included remote control components.

CaDA[®]



MAZDA *Officially licensed*



RX-7

C61502W
3305 PCS

Image 2.2: Official licensing confirmation for the CaDA Mazda RX-7 model, highlighting its authenticity.



Image 2.3: A visual representation of the 1:8 scale of the CaDA Mazda RX-7 model, demonstrating its substantial size.

3. COMPONENTS LIST

The CaDA Master C61502W set includes:

- 3305 high-precision building block pieces
- Remote control unit
- Motor module
- Battery pack (Lithium Ion, included)
- Connecting cables
- Detailed assembly instruction manual (physical copy)

Please verify all components are present before beginning assembly. Refer to the included physical instruction manual for a complete list and visual guide of all parts.

4. SETUP AND ASSEMBLY

Detailed assembly instructions are provided in the physical manual included with your product. Follow the

step-by-step guide carefully to ensure correct construction. This model is designed for individuals aged 14 and up due to its intricate design and numerous parts.

4.1. Pre-Assembly Checklist

1. Unpack all components and verify against the parts list in the physical manual.
2. Organize pieces by type or color to facilitate the building process.
3. Ensure a clean, well-lit workspace.

4.2. Assembly Process

Refer to the comprehensive, illustrated assembly manual provided in the box. The manual guides you through the construction of the vehicle's chassis, bodywork, interior, and the integration of the power module, including the drive shaft and motor linkage.



Image 4.1: The completed CaDA Mazda RX-7 model, highlighting the exclusive type label included with the product.



Image 4.2: Various printed pieces and interior details of the CaDA Mazda RX-7 model, including dashboard gauges and control buttons, ready for assembly.

5. OPERATING INSTRUCTIONS

5.1. Battery Installation and Charging

- The model requires 1 Lithium Ion battery, which is included.
- Install the battery into the designated battery pack compartment as shown in the physical assembly manual.
- Ensure the battery is fully charged before first use. Refer to the battery pack's specific charging instructions.

5.2. Remote Control Pairing

Follow the instructions in the physical manual to pair the remote control unit with the model's receiver. This typically involves powering on both devices and pressing a pairing button or sequence.

5.3. Driving the Model

Once paired, use the remote control to operate the vehicle:

- **Forward/Reverse:** Use the throttle control on the remote to move the car forward or backward.
- **Steering:** Use the steering control to turn the front wheels left or right.
- The custom CaDA powertrain ensures smooth power delivery and responsive steering.

5.4. Functional Features

The model incorporates several interactive features:

- **Working Rotary Engine:** Observe the simulated rotary engine in action.
- **Functional Steering Wheel:** The steering wheel inside the cockpit turns with the front wheels.
- **Manual Four-Speed Transmission:** Engage the manual transmission for varied driving experiences.
- **Opening Elements:** Doors, engine hood, and trunk can be opened to reveal interior details.



Image 5.1: Detailed views of the CaDA Mazda RX-7 model, illustrating the working rotary engine, functional steering wheel, manual four-speed transmission, and opening doors, engine hood, and trunk.



Image 5.2: Multiple exterior views of the CaDA Mazda RX-7 model, showcasing its front, side, and rear design elements, including the iconic flip-up headlights and fastback roofline.

5.5. Dual Dynamic and Static Modes

The power module is integrated without compromising the model's aesthetic. The car can be driven remotely for dynamic play or displayed as a detailed static model when powered off.

6. MAINTENANCE

6.1. Cleaning

- To clean the model, gently wipe with a dry, soft cloth.
- Avoid using water or chemical cleaners, as these can damage the plastic components or electronic parts.

6.2. Storage

- Store the model in a cool, dry place away from direct sunlight to prevent discoloration or warping of the

plastic.

- If storing for an extended period, remove the battery from the battery pack to prevent leakage.

6.3. Battery Care

- Recharge the Lithium Ion battery as needed, following the manufacturer's guidelines.
- Do not overcharge or completely drain the battery.

7. TROUBLESHOOTING

7.1. Model Not Responding to Remote Control

- **Check Batteries:** Ensure the battery in the model and the remote control are fully charged and correctly installed.
- **Re-Pair:** Attempt to re-pair the remote control with the model following the instructions in the physical manual.
- **Obstructions:** Ensure there are no physical obstructions blocking the signal between the remote and the model.

7.2. Movement Issues

- **Check Connections:** Verify all motor and power module connections are secure and correctly assembled.
- **Obstructions:** Inspect wheels and gears for any foreign objects or blockages.

7.3. Missing or Damaged Parts

If you encounter missing or damaged parts during assembly, please refer to the contact information provided in your physical instruction manual for customer support.

8. SPECIFICATIONS

Feature	Detail
Product Dimensions	22.13 x 10.83 x 8.5 inches (56.2cm x 27.5cm x 21.6cm)
Item Weight	13.64 pounds
Model Number	C61502W
Manufacturer Recommended Age	14 years and up
Batteries	1 Lithium Ion battery (included)
Number of Pieces	3305
Scale	1:8

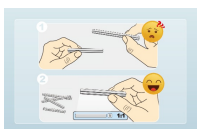


Image 8.1: Diagram illustrating the dimensions of the assembled CaDA Mazda RX-7 model: 56.2cm length, 27.5cm width, and 21.6cm height.

9. WARRANTY AND SUPPORT






For warranty information, technical support, or assistance with replacement parts, please refer to the contact details provided in the physical instruction manual included with your CaDA Master C61502W product. You may also visit the official CaDA website for further support resources.

Related Documents - C61502W



[CaDA Mazda 787B 1991 Model Building Kit Instructions](#)

Step-by-step assembly instructions for the CaDA C55029 Mazda 787B 1991 model building kit. Learn how to build this detailed replica of the iconic endurance race car.

	<p>CaDA Master Mechanical Safe Building Set Instructions</p> <p>Detailed instructions for assembling the CaDA Master Mechanical Safe building block set. Learn how to construct and understand the mechanics of this intricate model.</p>
	<p>CaDA C55052 Velocity Hurricane Building Instructions</p> <p>Step-by-step assembly guide for the CaDA C55052 Velocity Hurricane building toy car. Detailed instructions and parts list for constructing the model.</p>
	<p>CaDA AE86 Trueno Initial D Building Blocks - Assembly Guide</p> <p>Detailed assembly instructions for the CaDA AE86 Trueno Initial D building block set (C61024). Learn how to construct this iconic car model.</p>
	<p>CADA Street Coffee Shop Building Blocks Assembly Instructions C66005</p> <p>Step-by-step assembly guide for the CADA Street Coffee Shop building block set (C66005), featuring a personal introduction from the designer, Ohsojang.</p>
	<p>CaDA C51001 Off-road Warrior Building Blocks Assembly Instructions</p> <p>Detailed assembly instructions for the CaDA C51001 Off-road Warrior remote-controlled building block set. Learn how to build this Technic-style RC vehicle.</p>