

vretti B0FNW9FCS5

vretti Bluetooth Thermal Label Printer B0FNW9FCS5 User Manual

Model: B0FNW9FCS5

[Introduction](#) [Safety Information](#) [Package Contents](#) [Setup](#) [Operating](#)
[Instructions](#) [Maintenance](#) [Troubleshooting](#) [Specifications](#) [Warranty & Support](#)

1. INTRODUCTION

This manual provides instructions for the safe and efficient operation of your vretti Bluetooth Thermal Label Printer, model B0FNW9FCS5. Please read this manual thoroughly before using the device and retain it for future reference.

2. SAFETY INFORMATION

- Ensure the printer is connected to a power source with the correct voltage.
- Do not expose the printer to water or excessive humidity.
- Avoid placing the printer in direct sunlight or near heat sources.
- Do not attempt to disassemble or repair the printer yourself. Contact qualified service personnel.
- Keep out of reach of children.
- Use only vretti approved accessories and power adapters.

3. PACKAGE CONTENTS

Verify that all items are present in the package:

- vretti Bluetooth Thermal Label Printer (Model B0FNW9FCS5)
- Power Adapter
- USB Cable
- Quick Start Guide
- Sample Labels (50 premium labels)

4. SETUP

4.1 Physical Connection

1. Connect the power adapter to the printer and then to a power outlet.
2. Connect the USB cable from the printer to your computer (if using USB connection).
3. Turn on the printer using the power switch.

4.2 Loading Labels

The printer features an integrated paper bin designed for easy label loading.

1. Open the top cover of the printer.
2. Place the roll of thermal labels into the integrated paper bin. Ensure the labels feed from the bottom of the roll and the printable side faces upwards.
3. Adjust the guide rails to fit the width of your labels snugly, without creasing them. The printer supports label widths from 0.78 inches (19mm) to 4.6 inches (116mm).
4. Feed the first label through the print mechanism until it is positioned correctly.
5. Close the top cover.

All In One Built in Paper Bin

Label Width: 0.78"–4.6" (19–116mm)



Figure 4.2.1: Label loading into the integrated paper bin. The visualization window allows monitoring label supply. Adjustable guide rails ensure proper label alignment for various sizes like 2"x3", 3"x3", and 4"x6".

4.3 Driver and Software Installation

The vretti printer offers dual connectivity options: USB and Bluetooth.



Figure 4.3.1: Connectivity Compatibility Guide. USB connection is compatible with MacOS, Windows, Linux, and Chrome OS. Bluetooth connection is compatible with iOS, Android, and Tablets. Bluetooth is not supported for MacOS, Windows, Linux, or Chrome OS.

4.3.1 USB Connection (Windows/Mac/Linux/ChromeOS)

For most operating systems, the printer is designed for "Plug & Play" functionality. Connect the USB cable, and your system should automatically detect and install the necessary drivers within approximately 60 seconds. If drivers do not install automatically, refer to the included Quick Start Guide or the manufacturer's website for manual driver installation instructions.

Connectivity Compatibility Guide


USB


MacOS


Windows


Linux


Chrome OS


Bluetooth


ios


Android


Tablets


MacOS


Windows


Linux


Chrome OS

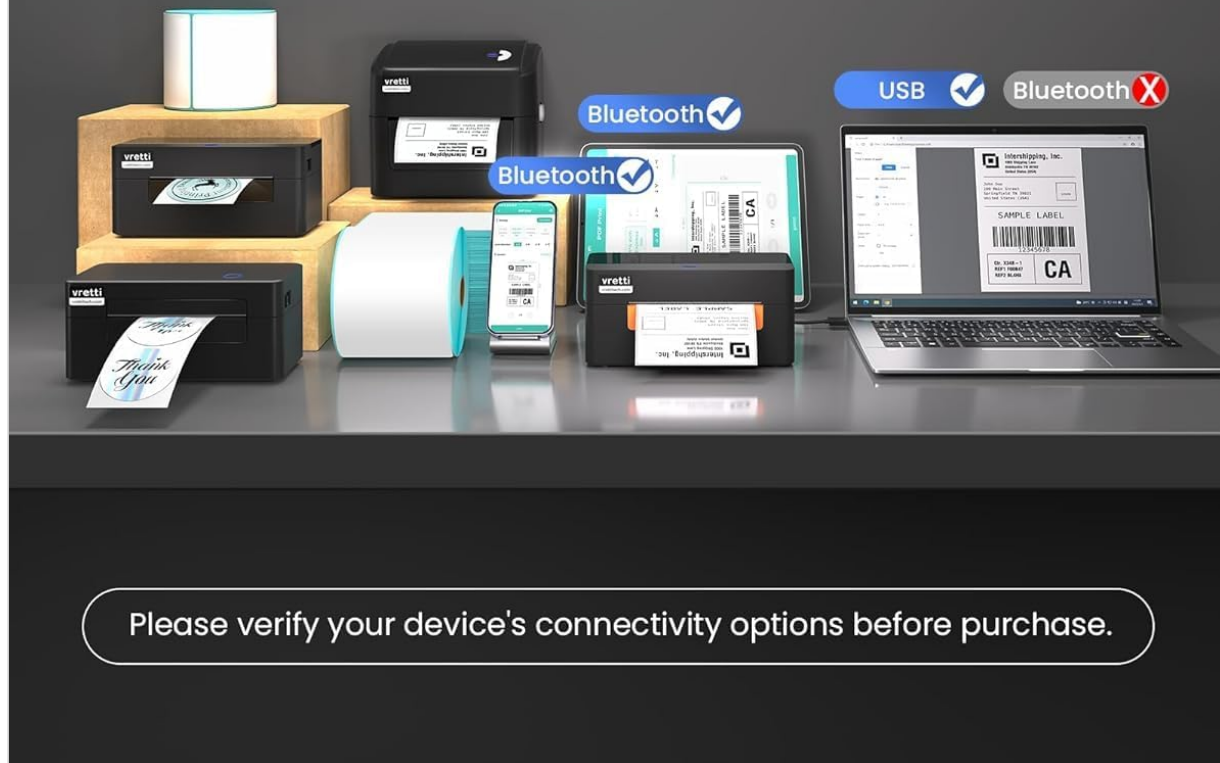


Figure 4.3.2: The vretti label printer is designed for quick deployment, allowing users to master its operation rapidly, often within 2 minutes for basic setup.

4.3.2 Bluetooth Connection (iOS/Android/Tablets)

1. Ensure Bluetooth is enabled on your mobile device or tablet.
2. Turn on the vretti printer.
3. On your device, search for available Bluetooth devices and select the vretti printer (e.g., "vretti Printer" or similar).
4. Follow any on-screen prompts to complete the pairing process.
5. Install the vretti printing application from your device's app store (e.g., Apple App Store, Google Play Store) to manage print jobs.

5. OPERATING INSTRUCTIONS

5.1 Printing Labels

The vretti thermal label printer uses direct thermal printing technology, eliminating the need for toner or ink. It is optimized for 4x6 inch shipping labels and barcodes.

1. Ensure labels are properly loaded (refer to Section 4.2).
2. Open the document or application from which you wish to print.
3. Select "Print" from the application's menu.
4. Choose the vretti printer from the list of available printers.
5. Adjust print settings as needed, such as label size (e.g., 4x6 inches) and orientation.
6. Initiate the print job.

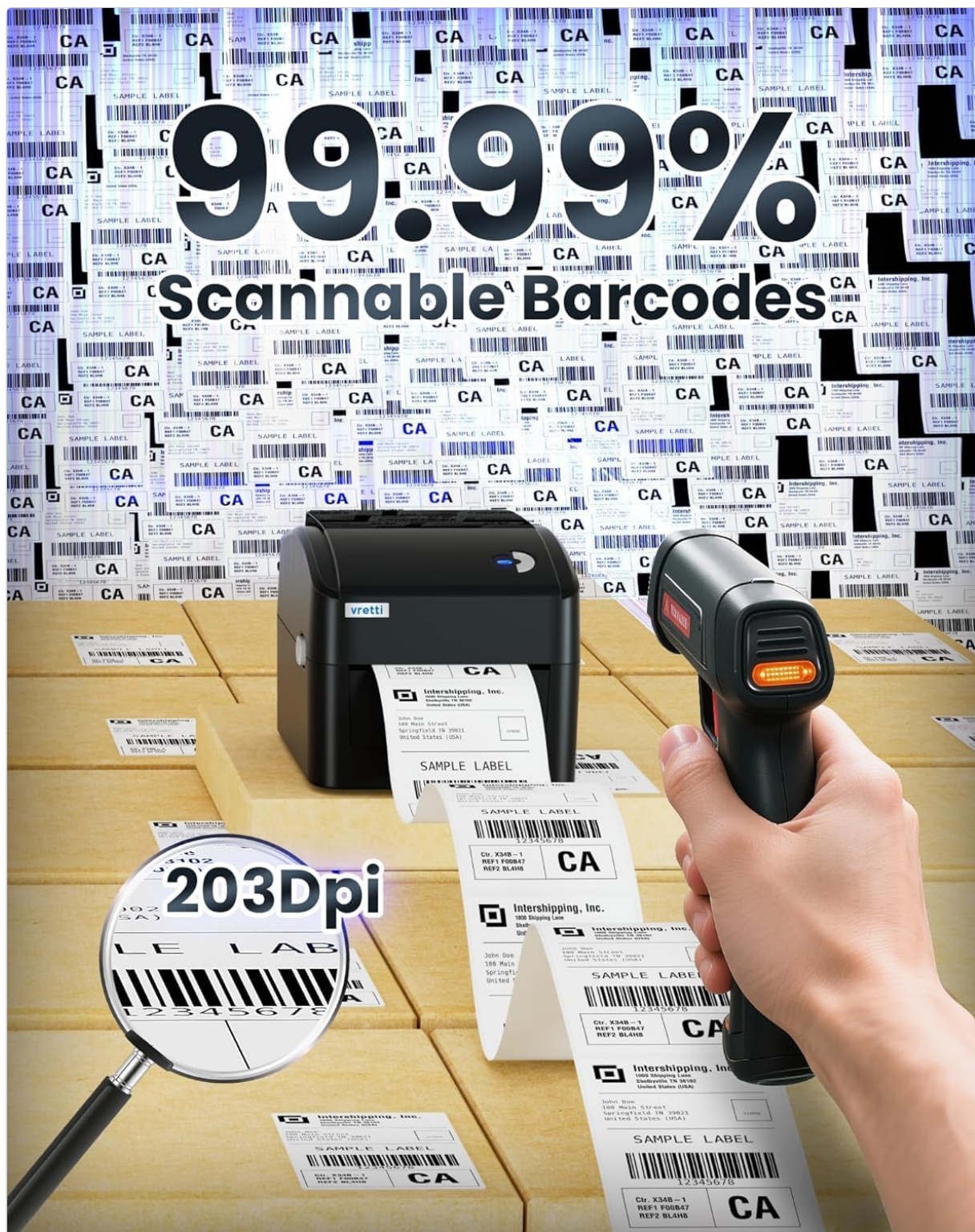


Figure 5.1.1: The printer delivers 203 dpi resolution, ensuring clear and scannable barcodes with a 99.99% recognition rate for labels such as DHL 4x6 shipping labels and QR codes.

200K+ Labels = 70% Less Cost

- ✓ No ink/ Toner Needed
- ✓ 3X Lifespan VS Standard

152^{mm/s} Print Speed

72^{Pcs/min} Print Labels



Figure 5.1.2: The vretti printer offers a print speed of 152 mm/s, capable of producing 72 labels per minute. Its direct thermal technology eliminates ink/toner, leading to significant cost savings and a print head lifespan three times longer than standard printers.

6. MAINTENANCE

6.1 Cleaning the Print Head

The printer features automatic cleaning functionality. However, if print quality degrades, manual cleaning may be necessary.

1. Turn off the printer and unplug it from the power source.
2. Open the top cover.

- 3. Gently wipe the print head with a lint-free cloth lightly dampened with isopropyl alcohol.
- 4. Allow the print head to dry completely before closing the cover and powering on the printer.

6.2 General Cleaning

Wipe the exterior of the printer with a soft, dry cloth. Do not use abrasive cleaners or solvents.

7. TROUBLESHOOTING

Problem	Possible Cause	Solution
Printer not turning on	No power, faulty power adapter	Check power connections, try a different outlet.
Poor print quality	Dirty print head, incorrect label type, low-quality labels	Clean the print head (Section 6.1). Ensure you are using thermal labels. Try new labels.
Labels not feeding correctly	Labels improperly loaded, guide rails not adjusted	Reload labels, adjust guide rails (Section 4.2).
Cannot connect via Bluetooth	Bluetooth not enabled, incorrect pairing, device incompatibility	Ensure Bluetooth is on. Re-pair the device. Confirm your device is compatible (iOS/Android/Tablets only).
Printer not recognized by computer (USB)	Driver issue, faulty USB cable, incorrect port	Try a different USB port or cable. Reinstall drivers if necessary.

8. SPECIFICATIONS

Feature	Detail
Brand	vretti
Model Number	B0FNW9FCS5
Printing Technology	Direct Thermal
Print Resolution	203 dpi
Print Speed	Up to 152 mm/s (72 labels/min)
Label Width	0.78" - 4.6" (19mm - 116mm)
Connectivity	USB (Windows/Mac/Linux/ChromeOS), Bluetooth 5.0 (iOS/Android/Tablets)
Max Sheet Capacity	500 labels (integrated bin)
Dimensions (L x W x H)	29.5 x 20.5 x 18.8 cm (approx.)
Power Source	External Power Adapter

9. WARRANTY AND SUPPORT

vretti products are manufactured to high-quality standards. For warranty information and technical support, please refer to the warranty card included with your product or visit the official vretti website. Please have your model number (B0FNW9FCS5) and purchase date available when contacting support.