

[Manuals.plus](#) /

› [Yamdruk](#) /

› Yamdruk Y1 Lite Open Ear Headphones User Manual

Yamdruk Y1 Lite

Yamdruk Y1 Lite Open Ear Headphones User Manual

Model: Y1 Lite

PRODUCT OVERVIEW

The Yamdruk Y1 Lite Open Ear Headphones are designed for comfort and performance, featuring a secure open-ear clip design, high-quality audio with powerful bass, and advanced call noise cancellation. They offer extended battery life and are built for active lifestyles with IPX4 water resistance and intuitive touch controls.



Image: Yamdrok Y1 Lite Open Ear Headphones shown with their charging case. The earbuds feature a unique open-ear design, and the case has a digital display for battery status.

Key Features:

- **Secure Open-Ear Clip:** Lightweight design with flexible C-shaped TR90 and liquid silicone for a secure fit during activities without ear canal pressure.
- **High Audio Quality:** Equipped with 13mm dynamic drivers and advanced bass enhancement technology for Hi-Res audio with rich bass and clear vocals. Features an anti-leakage system for private listening.
- **ENC Call Noise Cancellation:** Dual-microphone setup with intelligent wind noise reduction ensures clear calls in noisy or windy environments.
- **Extended Battery Life:** Provides 6 hours of playtime per charge, totaling 30 hours with the portable charging case. The case includes a smart digital display for precise power levels.
- **Bluetooth 6.0:** Offers fast pairing, stable connectivity, superior anti-interference, and low power consumption.
- **IPX4 Waterproof:** Resists sweat, rain, and water splashes, making them suitable for workouts and outdoor activities.
- **Smart Touch Control:** Intuitive controls for music, calls, volume, and voice assistants. Includes a low-latency Game Mode.

Your browser does not support the video tag.

Video: This video provides a comprehensive guide to the Yamdrok Y1 Lite headphones, demonstrating smart touch controls, the process for clearing pairing records, charging instructions for both earbuds and case, and proper wearing techniques for optimal comfort and sound.

WHAT'S IN THE BOX



Image: The image displays the contents of the Yamdrok Y1 Lite package, including the earbuds, charging case, user manual, and a Type-C charging cable.

- 1 x Pair of Yamdrok Y1 Lite Open Ear Headphones
- 1 x Charging Case
- 1 x Type-C Charging Cable
- 1 x User Manual

GETTING STARTED: SETUP AND PAIRING

Initial Pairing:

1. Ensure the earbuds are charged.
2. Open the charging case. The earbuds will automatically enter pairing mode.
3. On your device (smartphone, tablet, etc.), enable Bluetooth.
4. Search for "Yamdrok Y1 Lite" in the list of available Bluetooth devices.
5. Select "Yamdrok Y1 Lite" to connect. A voice prompt will confirm successful pairing.

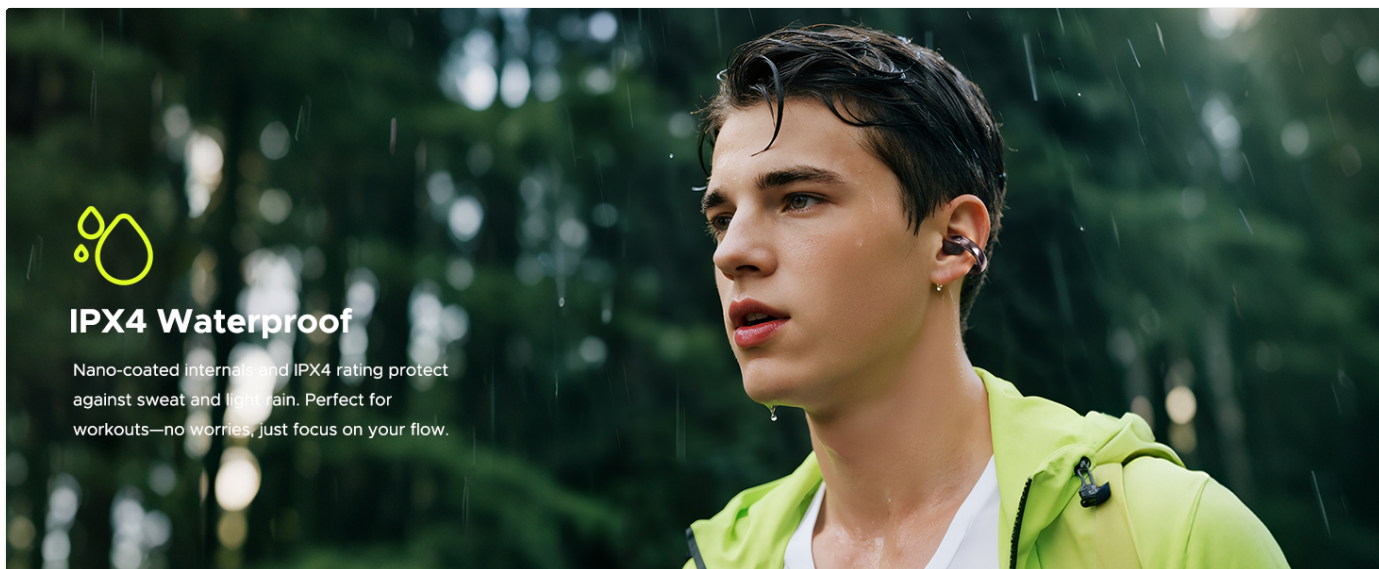
Clearing Pairing Record (Factory Reset):

If you experience connection issues or wish to pair with a new device, you may need to clear the pairing record.

1. Remove both earbuds from the charging case.
2. Long-press the touch keys on both the left and right headphones simultaneously for 10 seconds.
3. The white light on the earbuds will flash three times, indicating a successful reset.
4. After the reset, the earbuds will enter pairing mode. You can then proceed with initial pairing steps to connect them to your desired device.

WEARING THE EARBUDS

Proper wearing ensures optimal sound quality and comfort. The Yamdrok Y1 Lite earbuds are designed to clip onto your ear, not sit inside the ear canal.



IPX4 Waterproof

Nano-coated internals and IPX4 rating protect against sweat and light rain. Perfect for workouts—no worries, just focus on your flow.

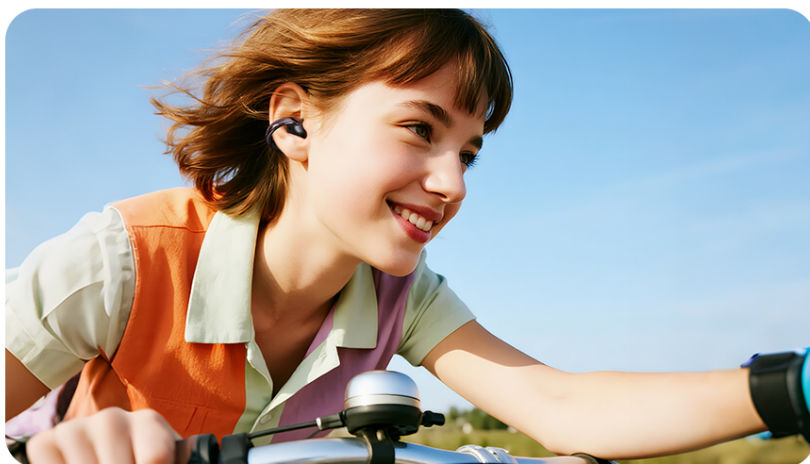
Image: A three-step diagram illustrating the correct method for wearing the Yamdrok Y1 Lite earbuds. Step 1: Lift the ear. Step 2: Slide the C-bridge down along the ear curve. Step 3: Press lightly to lock it on the anti-tragus.

1. Gently pull the top of your ear up.
2. Insert the C-bridge of the earbud along your ear curve.
3. Press lightly until it feels secure and locked on the anti-tragus.
4. Adjust the angle of the earbud so the sound outlet is vertically aligned with your ear canal. This ensures optimal wearing and sound experience.

Note: Incorrect wearing may negatively affect both call quality and audio listening experience.

SMART TOUCH CONTROLS

The Yamdrok Y1 Lite headphones feature intuitive touch controls on each earbud for easy management of music, calls, and other functions.



Dual-Mic + WindShield Design Crystal Talk In A Hurricane

Dual mics with ENC filter background noise, while the wind-resistant structure cuts gust interference. Hear and be heard, clearly.

Image: A close-up of a Yamdrok Y1 Lite earbud highlighting the touch control area with a fingerprint icon, indicating its smart touch functionality.

Action	Function
Single-tap Left Earbud	Decrease Volume
Single-tap Right Earbud	Increase Volume

Action	Function
Double-tap Either Earbud	Play/Pause Music, Answer/End Calls
Long-press Left Earbud (1.5s)	Play Previous Track
Long-press Right Earbud (1.5s)	Play Next Track
Triple-tap Left Earbud	Cycle between Gaming Mode and Normal Mode
Triple-tap Right Earbud	Activate Voice Assistant
Long-press Either Earbud during Incoming Call (1.5s)	Reject Call

CHARGING INSTRUCTIONS

Charging the Charging Case:



Steal The Night, Not The Show

For the Night Owls and Urban Explorers: Designed to Captivate Under City Lights. The Reflective Edges Catch the Neon Glow, Making a Subtle Yet Bold Claim—That Technology Can Be as Beautiful as It Is Functional, and Your Soundtrack Deserves a Frame This Striking.

Image: The charging case is displayed alongside information about its 30-hour total battery life and quick charge capabilities, showing 10 minutes of charge provides 1.5 hours of playtime.

1. Connect the Type-C charging cable to the charging port on the case.
2. Connect the other end of the cable to a Type-C charging adapter (charging current should not exceed 1A).
3. During charging, the digital display on the case will remain steadily lit, showing the current battery percentage. The last digit will flash, and the percentage will increase in 1% increments.
4. Once fully charged, the digital display will show 100% and then turn off.
5. When not charging, opening or closing the lid will briefly display the current battery level for 10 seconds before turning off.

Charging the Earbuds:

1. Place the earbuds into their respective slots in the charging case.
2. The digital display on the case will show a running light effect for the left and right battery indicators, which will turn off after 10 seconds.
3. The charging case does not display the individual power level of the earbuds.

Important: For extended periods of non-use, charge the device at least once every three months to maintain battery health.

MAINTENANCE AND CARE

- Keep the earbuds and charging case clean and dry. Use a soft, dry cloth for cleaning.
- Avoid exposing the device to extreme temperatures, humidity, or corrosive materials.
- Store the earbuds in their charging case when not in use to protect them and ensure they are charged for next use.
- Do not attempt to disassemble or modify the product, as this will void the warranty and may cause damage.

SPECIFICATIONS

Feature	Detail
Model Name	Yamdruk Y1 Lite
Brand	Yamdruk
Connectivity Technology	Wireless (Bluetooth 6.0)
Ear Placement	On Ear
Form Factor	Open Ear
Color	Black
Item Weight	2.82 ounces
Water Resistance	IPX4
Driver Size	13mm Dynamic Drivers
Battery Life (Earbuds)	Up to 6 hours
Total Battery Life (with Case)	Up to 30 hours
Charging Port	Type-C

TROUBLESHOOTING

If you encounter any issues with your Yamdruk Y1 Lite headphones, please refer to the following common solutions:

- **No Sound/Connection Issues:**
 - Ensure earbuds are charged and within Bluetooth range of your device.
 - Verify Bluetooth is enabled on your device and "Yamdruk Y1 Lite" is selected.
 - Try clearing the pairing record (factory reset) as described in the "Getting Started" section, then re-pair.
 - Restart your device and the earbuds.
- **One Earbud Not Working:**
 - Place both earbuds back into the charging case, close the lid, and then take them out again.
 - Perform a factory reset to re-sync the earbuds.
- **Charging Issues:**
 - Ensure the charging cable is securely connected to both the case and the power adapter.
 - Check if the power adapter is functioning correctly.
 - Clean the charging contacts on the earbuds and inside the case with a dry cotton swab.
- **Poor Call Quality:**

- Ensure the earbuds are worn correctly and securely.
- Check for any obstructions near the microphone areas.
- Move to a quieter environment if experiencing excessive background noise.

WARRANTY AND SUPPORT

Yamdruk products are designed and manufactured to the highest quality standards. This product is covered by a limited warranty from the date of purchase. For detailed warranty information, technical support, or customer service inquiries, please refer to the warranty card included in your package or visit the official Yamdruk website.

You can also contact Yamdruk customer support through the seller's contact information on the platform where you purchased the product.

