

Mova Mobius 60

Mova Mobius 60 Robot Vacuum and Mop Instruction Manual

Model: Mobius 60 | Brand: Mova

[Setup](#) [Operating](#) [Maintenance](#) [Troubleshooting](#) [Specifications](#) [Warranty & Support](#)

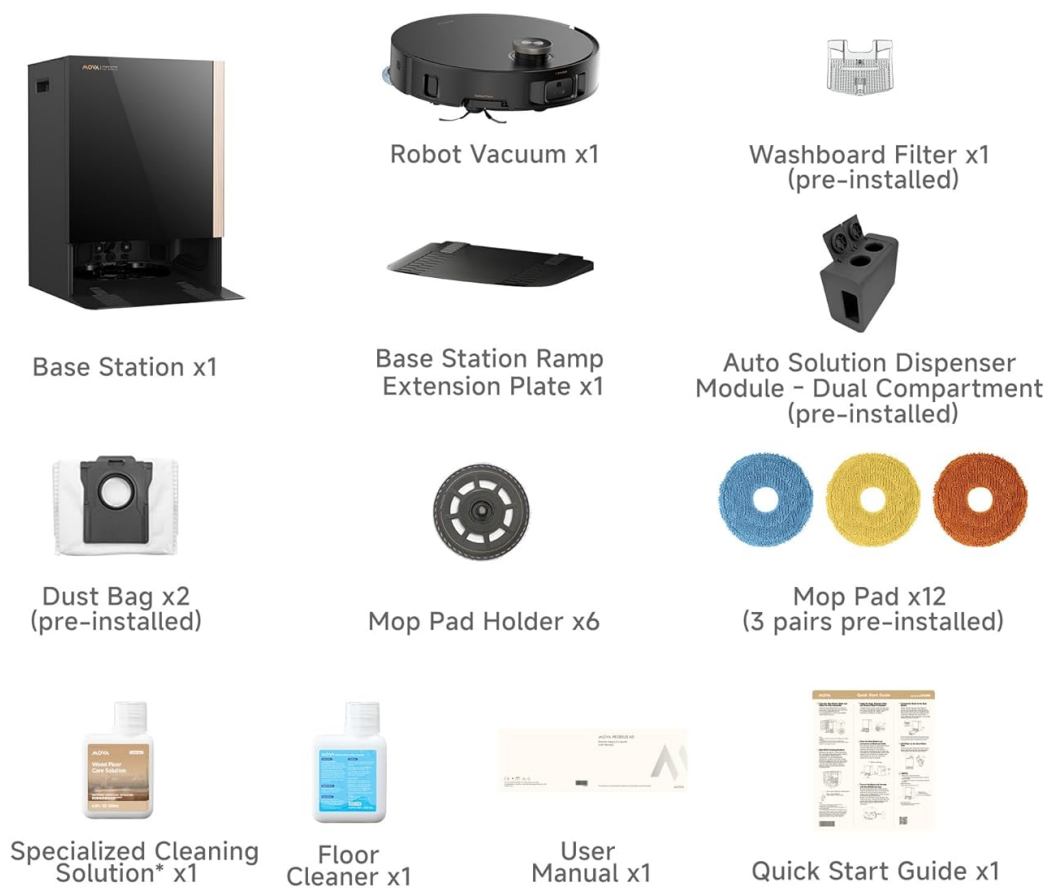
1. SETUP AND INITIAL USE

Before operating your Mova Mobius 60, please ensure all packaging materials are removed and the device is properly set up.

1.1 Unboxing and Base Station Setup

Carefully remove all components from the packaging. The base station is substantial in size and weight; handle with care.

- Connect the 6-foot power cord to the base station and ensure the power switch is in the 'on' position. The base station requires a 120V ~ 60Hz power supply and consumes up to 640W when heating water.
- Open the top lid of the base station to access the water tanks. The clean water tank (clear) should be filled with clean water. The dirty water tank (darker) will collect used water and should be emptied regularly.
- Open the side door of the base station to access the dust bag compartment. The robot will automatically empty its internal dustbin into this bag. Replace the dust bag approximately every two months.
- Insert the dual cleaning solution tank into its designated slot. This allows for automatic dispensing of multi-surface and wood floor care solutions.
- Attach the base station ramp extension plate to ensure smooth docking for the robot.



*The cleaning solutions included in the box may vary (e.g. Pet Odor Solution, Wood Floor Care Solution), and the actual contents shall prevail based on the final packaging. Detailed operating procedures for cleaning solutions are specified on their bottle labels. If depleted, purchase replacements exclusively through official channels.

What's in the Box

Figure 1.1: Contents of the Mova Mobius 60 package, including the robot, base station, mop pads, cleaning solutions, and accessories.

1.2 Robot Vacuum Overview

The Mova Mobius 60 robot vacuum features LIDAR navigation, a front-facing camera with an LED light, and various sensors for efficient cleaning.

- The robot has two physical buttons on its top panel: a Home button and a Power button. These allow for manual control of basic functions.
- The internal dustbin is located under the top cover. It contains a filter that should be cleaned every two weeks.
- The robot's underside features two main drive wheels with extendable robotic arms for obstacle clearance, a dual brush roller system, a side brush, and two spinning mop pads.
- Cliff sensors prevent the robot from falling down stairs, and a carpet sensor allows it to adjust cleaning modes when transitioning to carpeted areas.



Figure 1.2: The Mova Mobius 60 robot vacuum and mop unit.

1.3 MopSwap System Pads

The MopSwap System includes three types of interchangeable mop pads, each designed for specific cleaning needs:

- **ThermoHold Mop (Red/Orange):** Designed to tackle oily residues, especially in kitchens. It utilizes heat-lock technology to break down grease when used with hot water.
- **Plush Mop (Yellow/Beige):** Features ultra-soft fibers that absorb moisture and lift dust, ideal for delicate surfaces like wooden floors.
- **HyperClean Mop (Blue):** Made of composite fibers, this versatile mop delivers effective all-around cleaning for various surfaces.



Figure 1.3: The three types of mop pads for the MopSwap System: ThermoHold, Plush, and HyperClean.

2. OPERATING INSTRUCTIONS

The Mova Mobius 60 is designed for intelligent and automated cleaning. Utilize the companion app for full control and customization.

2.1 Smart Navigation and Obstacle Avoidance

- **FlexScope Navigation:** The retractable DToF sensor automatically lowers to reduce height when entering tight spaces (e.g., under sofas) and rises in open areas for a wider field of view, ensuring accurate navigation and efficient path planning.
- **AI SmartSight:** Advanced AI SmartSight combined with a Structured Light 3D Scanner ensures precise obstacle detection, identifying over 240 types of obstacles. A built-in LED fill-light boosts visibility in low-light conditions.



Figure 2.1: The robot's FlexScope Navigation allows it to adjust its height to clean under low furniture.

2.2 MopSwap System and Cleaning Modes

- The base station's robotic arm automatically exchanges mop pads based on your pre-set room configurations in the app, preventing cross-contamination between areas like kitchens and bathrooms.
- **Dynamic Suction Retention System:** When the robot detects carpet, a pressure-retention baffle lowers automatically to form a semi-sealed space, increasing suction power to lift deep-seated dust and hair.
- **Triple Anti-Tangle Mechanisms:** The TroboWave DuoBrush, side brush, and Omni-Wheel work together to prevent hair tangles, boosting cleaning efficiency and minimizing maintenance.
- **MaxiReach Technology:** The side brush extends to reach into edges, corners, and narrow spaces for up to 100% coverage. The mop also extends up to 4cm to reach hidden debris.
- **Liftable Side Brush & Mop Pads:** The robot intelligently separates vacuuming and mopping tasks by lifting the mop pads or side brush when not in use, preventing wet spots on carpets.

Gets into Carpet Gaps. Pulls Dust from Deep Within Carpet Gaps

When MOBIUS 60 detects the carpet, a pressure-retention baffle lowers automatically to form a semi-sealed space. With its powerful motor, this increases the suction power inside, making it easy to lift deep-seated dust and hair.

30,000Pa
Suction

*30,000Pa: Based on our in-house lab tests. Actual results may vary depending on environmental factors.

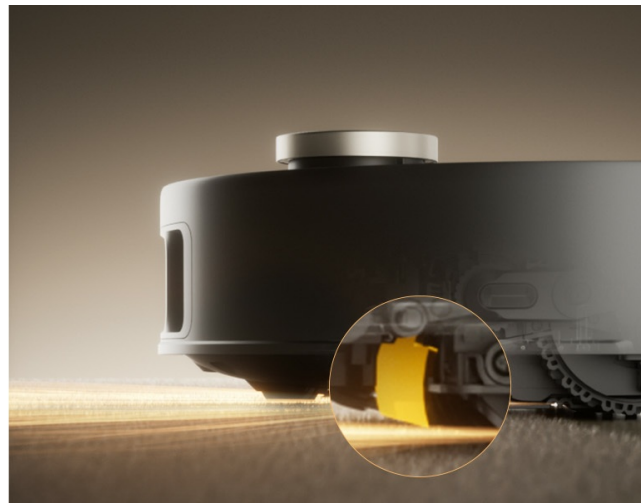
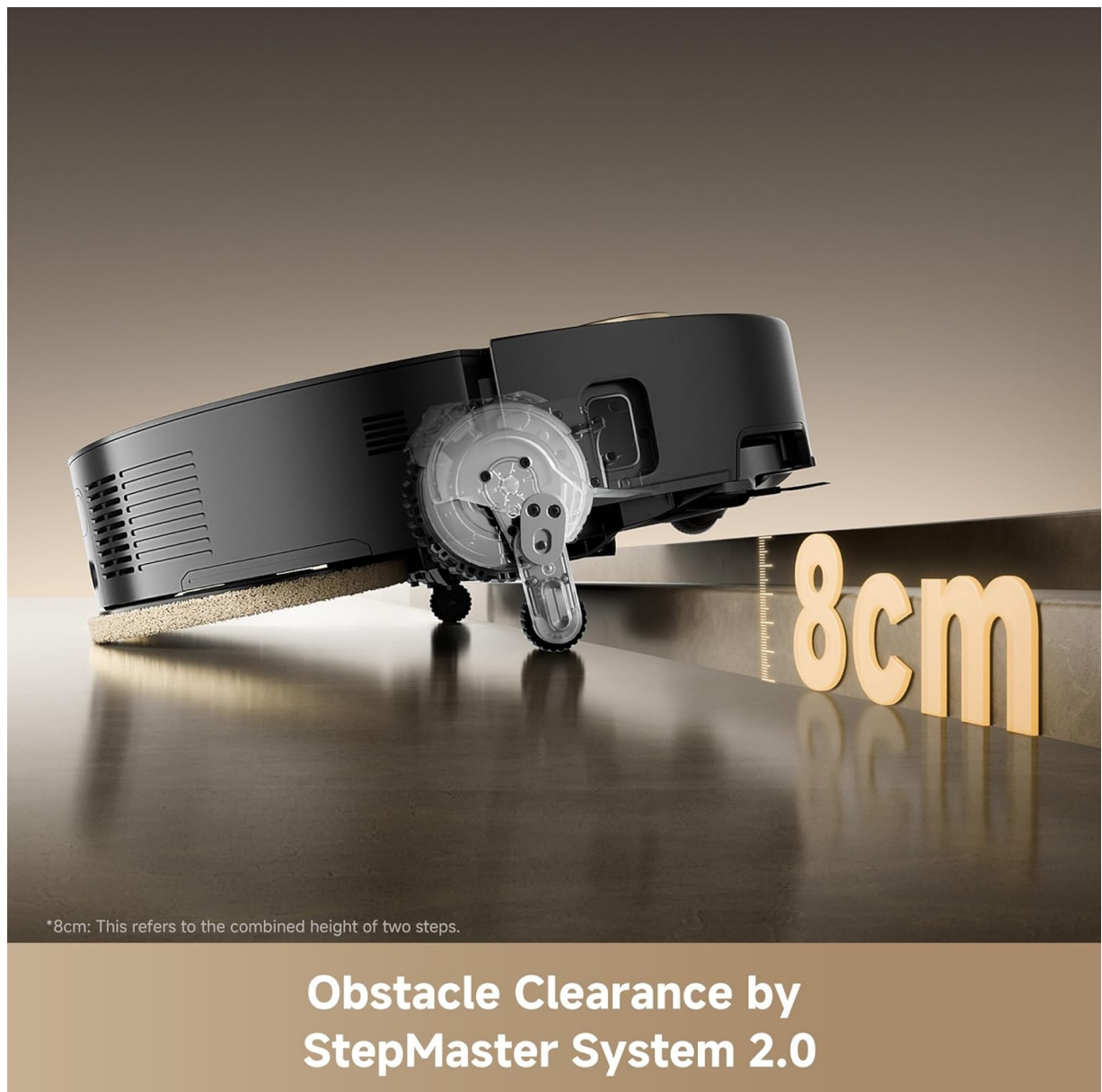


Figure 2.2: The Triple Anti-Tangle Mechanisms ensure efficient cleaning without hair entanglement.

2.3 Advanced Mobility

- **StepMaster System 2.0:** Robotic retractable legs lift the chassis to cross steps, thresholds, door tracks, and U-shaped furniture legs up to 3.14 inches (8cm) high. For a single obstacle or vertical step, it can overcome up to 1.98 inches (5cm).



*8cm: This refers to the combined height of two steps.

Obstacle Clearance by StepMaster System 2.0

Figure 2.3: The StepMaster System 2.0 allows the robot to clear obstacles up to 3.14 inches.

2.4 App Control and Voice Assistant

- The Mova Home app provides immersive animations, displaying the robot's movement and cleaning progress in real-time. It also offers a dark mode option.
- A built-in intelligent voice assistant allows for hands-free control. Simply say "Hey, MOVA" to start cleaning, customize room settings, or tackle messes.

Video 2.1: An overview of the Mova V60 Mobius Robotic Vacuum's features and operation.

3. MAINTENANCE

Regular maintenance ensures optimal performance and longevity of your Mova Mobius 60.

3.1 Auto Maintenance Base Station

- The All-in-One Base Station automates refilling, emptying, mop washing, and recharging.
- **100°C (212°F) PTC System for Washboard:** This system dissolves tough stains and keeps mop pads hygienic and fresh.
- **Self-Cleaning Washboard with Spray Nozzles:** Features 20 precision nozzles for even spray coverage and improved cleaning efficiency. A central filter collects dirt and removes used water, minimizing water spots.



Figure 3.1: The base station automatically cleans and dries the mop pads using a 100°C PTC system.

3.2 Robot Components Care

- **Dust Bag:** Replace the dust bag in the base station approximately every two months, or as indicated by the app.
- **Internal Filter:** The robot's internal filter should be cleaned every two weeks. Wash it under water and allow it to air dry completely before reinserting.
- **Cliff Sensors:** Clean the cliff sensors on the underside of the robot approximately every 30 hours of use to ensure proper stair detection.
- **Mop Pads:** While the base station washes the mop pads, inspect them periodically for wear and tear. Ensure they are securely attached to the mop pad holders.

4. TROUBLESHOOTING

This section addresses common issues you might encounter with your Mova Mobius 60.

- **Mapping Inaccuracies:** If the robot's map is inaccurate or identifies furniture as walls, check for obstructions during the initial mapping process. Ensure the DToF sensor is clean. Future app updates

may provide enhanced map editing tools.

- **Water Dripping During Mopping:** If water drips from the mop function, adjust the amount of water used via the app settings. Ensure mop pads are properly broken in and securely attached.
- **Robot Getting Stuck:** The StepMaster System 2.0 is designed to overcome obstacles up to 3.14 inches. However, very loose or high-pile rugs may still cause the robot to get stuck. Remove such rugs or create no-go zones in the app.
- **Reduced Battery Life:** The battery life is approximately 40 minutes. Ensure the robot is docking correctly for full charges. High suction settings or frequent obstacle navigation can reduce runtime.
- **Wi-Fi Connectivity Issues:** If experiencing Wi-Fi problems, locate the Wi-Fi reset button under the top cover of the robot (often accessible with a paperclip) and follow the app's instructions to reconnect.

5. SPECIFICATIONS

Brand	Mova
Model Name	Mobius 60
Special Feature	Auto-Interchangeable Mop Pads, Lifiable Navigation
Color	Black
Product Dimensions	26.81"L x 20.12"W x 20.67"H
Included Components	Floor Brush, Base Station, Base Station Ramp Extension Plate, Auto Solution Dispenser Module, Dust Bag x2, Mop Pad Holder x6, Mop Pad x12 (3 pairs pre-installed), Specialized Cleaning Solution x1, Floor Cleaner x1, User Manual x1, Quick Start Guide x1
Filter Type	HEPA
Battery Life	40 minutes
Power Source	Battery Powered
Battery Type	Lithium-ion battery (1 12V battery included)
Item Weight	60 pounds

6. WARRANTY & SUPPORT

Mova offers a 3-year warranty on the Mobius 60 Robot Vacuum and Mop. Please refer to the official Mova website for complete warranty details, as some models and parts may have specific terms.







Customer Support

For any inquiries or assistance, Mova provides 24/7 rapid responding service. Contact details can be found

in your Quick Start Guide or on the official Mova website.

- 24/7 Rapid Responding Service Team
- 30-Day Money Back Service
- Up to 36-Month Warranty

Related Documents - Mobius 60

	<p>MOVA Z60 Ultra Roller Complete: User Manual for Robot Vacuum and Mop with Auto-Empty & Self-Cleaning</p> <p>Comprehensive user manual for the MOVA Z60 Ultra Roller Complete robot vacuum and mop. Learn about setup, features like auto-empty and self-cleaning mops, operation, and maintenance. Visit mova.tech for support.</p>
	<p>MOVA E30 Ultra Robot Vacuum and Mop User Manual</p> <p>User manual for the MOVA E30 Ultra Robot Vacuum and Mop with Auto-Empty and Mop Self-Cleaning. Includes safety information, product overview, how to use, routine maintenance, troubleshooting, and specifications.</p>
	<p>MOVA E30 Ultra Robot Vacuum and Mop User Manual</p> <p>User manual for the MOVA E30 Ultra robot vacuum and mop. Learn about setup, operation, maintenance, and troubleshooting for your automated cleaning device.</p>
	<p>MOVA P50 Ultra Robot Vacuum and Mop User Manual</p> <p>Comprehensive user manual for the MOVA P50 Ultra Robot Vacuum and Mop, detailing setup, operation, maintenance, and troubleshooting for optimal performance.</p>
	<p>MOVA P50 Ultra Robot Vacuum and Mop User Manual</p> <p>Comprehensive user manual for the MOVA P50 Ultra robot vacuum and mop, detailing setup, operation, maintenance, and troubleshooting for efficient home cleaning.</p>
	<p>MOVA S20 Ultra Robot Vacuum and Mop User Manual</p> <p>Official user manual for the MOVA S20 Ultra Robot Vacuum and Mop. Learn about setup, operation, maintenance, and troubleshooting for your MOVA S20 Ultra.</p>