

eclife THKFVS002

eclife 24" Bathroom Vanity with White Square Ceramic Sink Instruction Manual

Model: THKFVS002

INTRODUCTION

This manual provides detailed instructions for the assembly, operation, maintenance, and troubleshooting of your eclife 24-inch Freestanding Bathroom Vanity with White Square Ceramic Vessel Sink. Please read all instructions carefully before beginning assembly and retain this manual for future reference.

PRODUCT OVERVIEW AND DIMENSIONS

The eclife 24" Bathroom Vanity is a modern freestanding cabinet designed for bathroom use. It features an open storage shelf, fluted soft-closing doors, and a white square ceramic vessel sink.

Key Features:

- Durable Engineered Wood Cabinet with Woodgrain Texture
- White Square Ceramic Vessel Sink
- Soft-Closing Cabinet Doors
- Open Bottom Storage Shelf
- Water-Saving Faucet (included)

Dimensions:

- Overall Dimensions: 20.1"D x 24"W x 31.9"H
- Sink Dimensions: Approximately 16.25" x 16.25" x 4.75"



This image displays the overall dimensions of the vanity: 24 inches wide, 20.1 inches deep, and 31.9 inches high. The sink dimensions are also shown as approximately 16.25 inches by 16.25 inches with a depth of 4.75 inches.

SETUP AND ASSEMBLY

Your eclife vanity is a Ready-To-Assemble (RTA) unit. It may arrive in separate packages. Ensure all parts are present before starting assembly.

Required Tools:

- Phillips Head Screwdriver
- Adjustable Wrench (for plumbing connections)
- Level

Assembly Steps:

1. Unpack all components and verify against the parts list (refer to included paper manual).
2. Assemble the cabinet frame according to the numbered parts and diagrams.
3. Attach the soft-closing hinges to the cabinet doors and frame.
4. Install the open bottom storage shelf.
5. Place the ceramic vessel sink onto the vanity top.

6. Connect the faucet and drain assembly to the sink and your plumbing lines.

Important: For detailed hinge adjustment, refer to the video below.

Your browser does not support the video tag.

This video demonstrates how to adjust the soft-closing door hinges on eclife cabinets, ensuring proper alignment and smooth operation.



This image highlights the soft-closing hinges on the cabinet doors and the internal storage space. It also shows the open bottom storage shelf.

PRODUCT DETAILS



This image details the stylish grooved lines on the cabinet doors, the vivid wood surface texture, and the classic feet design of the vanity.

OPERATING INSTRUCTIONS

The eclife vanity is designed for ease of use and efficient storage.

Cabinet Doors:

- The cabinet doors feature soft-closing hinges to prevent slamming and protect fingers. Gently push the doors to close them; they will slowly and quietly retract into place.

Storage:

- Utilize the enclosed cabinet space for larger items or items you wish to keep out of sight.
- The open bottom shelf is ideal for storing towels, decorative items, or frequently accessed essentials.

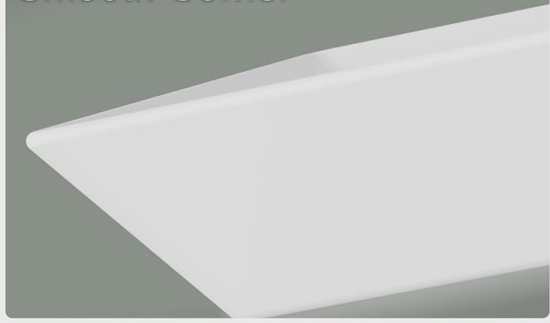
Faucet Operation:

- The included faucet is designed for water efficiency. Operate it as you would a standard bathroom faucet, adjusting temperature and flow as needed.

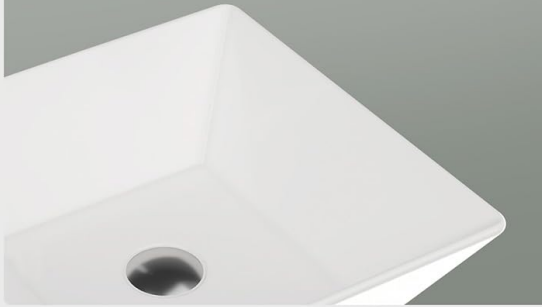
Unique Handmade Pattern



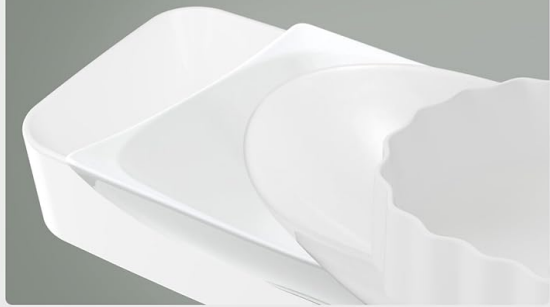
Smooth Corner



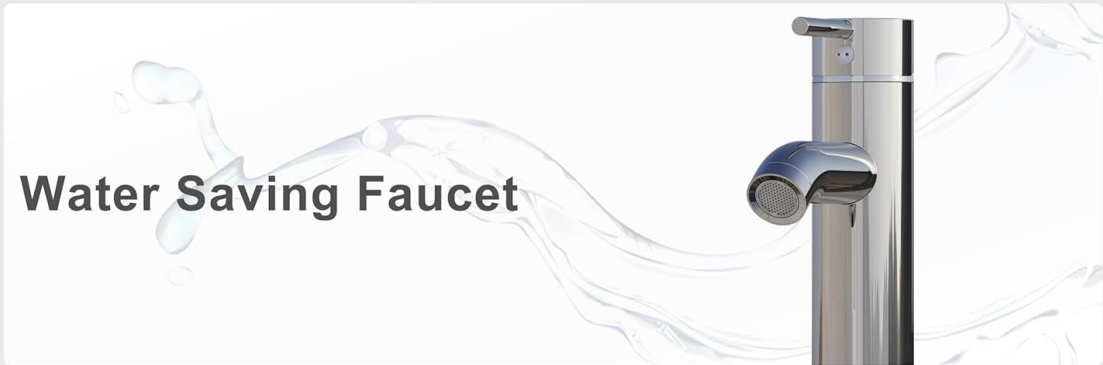
Easy to Clean



Multiple Choices



Water Saving Faucet



This image showcases the features of the ceramic vessel sink, including its unique handmade pattern, smooth corners for safety, easy-to-clean surface, and the water-saving faucet.

MAINTENANCE AND CARE

Proper care will ensure the longevity and appearance of your eclife bathroom vanity.

Cabinet Care:

- Wipe the engineered wood surfaces with a soft, damp cloth. Avoid abrasive cleaners or harsh chemicals that can damage the finish.
- Promptly wipe up any water spills to prevent moisture damage, especially on the woodgrain texture.
- Periodically check and tighten any loose screws on hinges or handles.

Sink Care:

- Clean the ceramic vessel sink with mild soap and water. Rinse thoroughly and dry with a soft cloth to prevent water spots.
- Avoid using abrasive pads or cleaners that could scratch the ceramic surface.

Faucet Care:

- Clean the faucet with a soft cloth and mild soap. Do not use abrasive cleaners, acids, or harsh chemicals, as these can damage the finish.

TROUBLESHOOTING

If you encounter any issues with your vanity, refer to the following common solutions.

Problem: Cabinet doors do not close smoothly or are misaligned.

- **Solution:** Adjust the soft-closing hinges. Refer to the hinge adjustment video in the "Setup and Assembly" section for guidance. Small adjustments can correct alignment issues.

Problem: Water leaks from plumbing connections.

- **Solution:** Ensure all plumbing connections (faucet, drain, supply lines) are securely tightened. Check for proper installation of washers and seals. If leaks persist, consult a professional plumber.

Problem: Water spots or stains on the vanity surface.

- **Solution:** Wipe up spills immediately. For existing spots, use a damp cloth with a small amount of mild cleaner, then dry thoroughly. Avoid prolonged exposure to moisture.

SPECIFICATIONS

Feature	Detail
Brand	eclife
Model Number	THKFVS002 (BT-02)
Product Dimensions	20.1"D x 24"W x 31.9"H
Material	Ceramic, Engineered Wood
Color	White Square
Mounting Type	Floor Mount (Freestanding)
Number of Doors	2 (Fluted, Soft-Closing)
Number of Shelves	2 (including open bottom shelf)
Included Components	Faucet & Drain, Instructions, Sink, Vanity
Item Weight	82 Pounds

WARRANTY AND SUPPORT

For any questions, missing parts, or assistance with your eclife vanity, please contact eclife customer support. While specific warranty details are not provided in this manual, eclife is committed to customer satisfaction.

Please refer to your purchase documentation or the eclife website for the most current warranty information and contact details.

Manufacturer: eclife

Contact: Refer to your purchase platform or the official eclife website for customer service contact information.