

## Manuals+

[Q & A](#) | [Deep Search](#) | [Upload](#)

manuals.plus /

› [APEXEL](#) /

› [APEXEL TM6 6X Telephoto and 150mm Macro 2-in-1 Phone Camera Lens Kit User Manual](#)

## APEXEL TM6

# APEXEL TM6 6X Telephoto and 150mm Macro 2-in-1 Phone Camera Lens Kit User Manual

Model: TM6

## 1. INTRODUCTION

This manual provides detailed instructions for the APEXEL TM6 6X Telephoto and 150mm Macro 2-in-1 Phone Camera Lens Kit. This versatile accessory enhances your smartphone's photographic capabilities, allowing you to capture distant subjects with clarity and explore intricate details up close. Please read this manual thoroughly before use to ensure proper operation and maintenance.

## 2. PRODUCT OVERVIEW

The APEXEL TM6 kit combines a 6X telephoto lens and a 150mm macro lens into a single, adaptable unit. It features an aerospace-grade aluminum body for durability and a high-definition optical system with 9 groups and 12 elements, including FMC coating lenses for superior image quality.



**Figure 1:** Diagram illustrating the Ultra-HD Optical System and FMC Coating Lenses, highlighting the 9 groups and 12 elements for high-definition imaging.

## 3. PACKAGE CONTENTS

Verify that all items are present in your package:

- Packaging Box
- Phone Mount
- 25-37mm Adapter Ring
- Telephoto Macro Lens (main lens unit)
- Cleaning Cloth
- Protective Lens Bag
- User Manual
- 150mm Macro Lens (detachable)
- Eyepiece Cover
- 37mm Eyecup
- EVA Pads

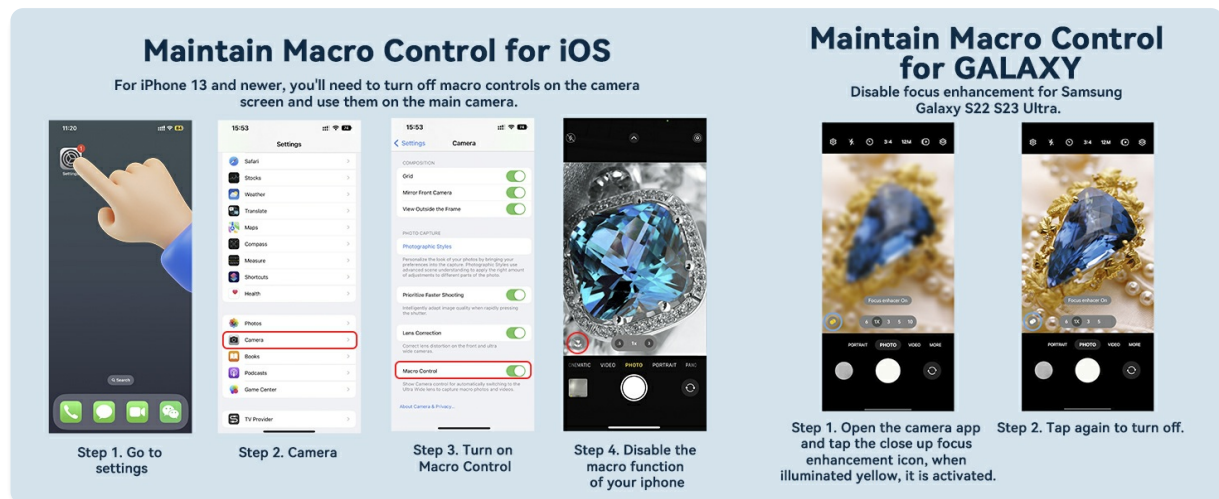


Figure 2: Visual representation of all components included in the APEXEL TM6 Lens Kit package.

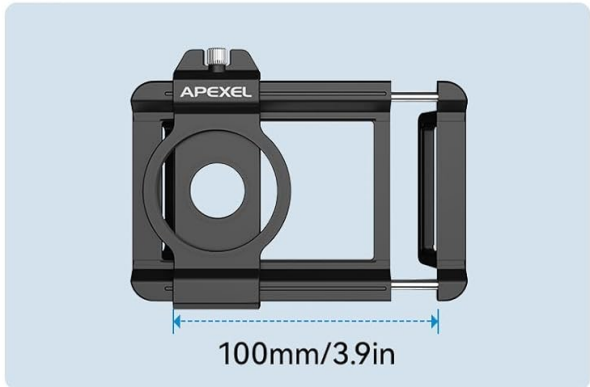
## 4. SETUP AND INSTALLATION

Follow these steps to correctly attach the lens kit to your smartphone:

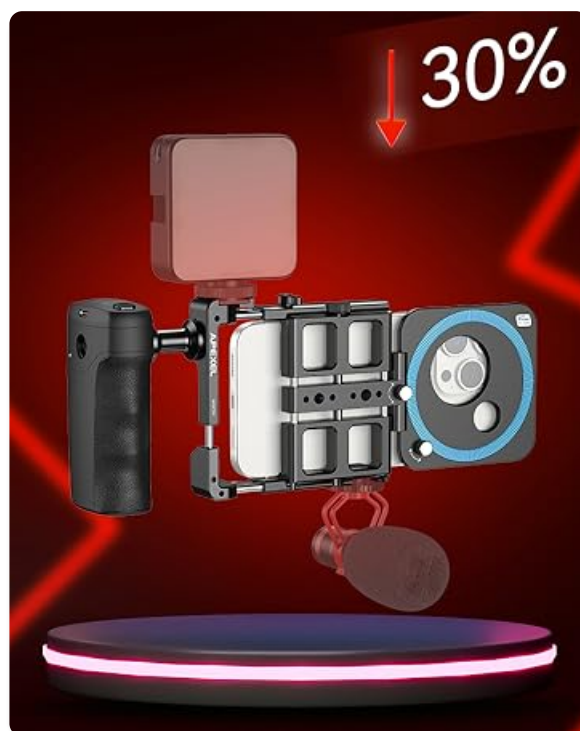
1. **Fill Gap:** Use the provided EVA pads to fill any gap between your phone's camera lens and the phone mount clamp. This ensures a snug fit and prevents light leakage.
2. **Insert Phone:** Pull apart the stretching clamp of the phone mount and carefully insert your smartphone.
3. **Align Lens:** Push the slider on the phone mount to align the central aperture with your phone's main camera lens. Loosen the top screw if necessary for adjustment.
4. **Tighten:** Once aligned, tighten the top fixed screw to secure the focus hole position.
5. **Attach Lens:** Screw the telephoto macro lens unit into the threaded interface of the phone mount to complete the installation.

## Widely Compatible

Suitable for all smartphones with a width of 70-100mm (2.8-3.9")  
(Tips: Does not fit small-sized iPhone Mini and SE series)



**Figure 3:** The phone mount attached to a smartphone with the telephoto lens, ready for photography.



**Figure 4:** Step-by-step visual guide for quick installation of the APEXEL TM6 lens kit.



Your browser does not support the video tag.

**Video 1:** Official APEXEL video demonstrating the installation process and key features of the 6X Telephoto and 150mm Macro Lens kit.

Your browser does not support the video tag.

**Video 2:** Official APEXEL video showcasing the versatility of the 2-in-1 Camera Lens Kit for various photography needs.

## 5. OPERATING INSTRUCTIONS

### 5.1. 6X Telephoto Lens

The 6X telephoto lens is designed to bring distant subjects closer, ideal for capturing wildlife, sporting events, concerts, and nature photography. The optimal focusing distance for the telephoto lens is 30cm to infinity (11.81 in to infinity).

- **Usage:** Attach the main lens unit to the phone mount. Open your phone's camera app. For best results and to eliminate black edges, zoom your phone's camera to approximately 2.0X to 2.4X.
- **Handheld Observation:** The telephoto lens can also be used independently as a monocular for direct observation of distant objects. Attach the eyepiece cover for comfortable viewing.

## Telephoto Lens

6X Telephoto – Bring the Distant Close, Capture the Unseen.



Telephoto optimal focusing distance: 30cm- $\infty$  (11.81 in.- $\infty$ )



Naked-eye observation



iPhone 15 Pro + 6X Telephoto Lens

**Figure 5:** Demonstrating the 6X Telephoto Lens capturing a bird, showing the enhanced detail compared to naked-eye observation.



## Compatible with 37mm Filters

Equipped with a 25 mm to 37 mm threaded adapter ring for any 37 mm filter (not included)

**Figure 6:** A user demonstrating handheld observation with the telephoto lens, utilizing the comfortable eyecup.

### 5.2. 150mm Macro Lens

The 150mm macro lens allows you to discover the beauty in every detail, capturing extreme close-ups of small subjects like flowers, insects, and jewelry. The optimal focusing distance for the macro lens is 15cm to 40cm (5.9 to 15.74 in).

- **Usage:** To use the macro function, attach the dedicated 150mm macro lens to the main telephoto unit. Ensure the subject is within the optimal focusing distance for clear images.
- **Focusing:** The lens features a focus ring for fast and precise focusing. Rotate the ring until your subject is sharp.



# 150mm Macro Lens – Discover the Beauty in Every Detail.

tip: To use the macro function, please attach the macro lens.



Macro optimal focusing distance: 15cm-40cm (5.9-15.74 in.)



Naked-eye observation



iPhone 15 Pro + 150mm Macro Lens

**Figure 7:** Demonstrating the 150mm Macro Lens capturing a flower, highlighting the ability to reveal fine details.

Your browser does not support the video tag.

**Video 3:** Official APEXEL video demonstrating both telephoto and macro photography capabilities of the 2-in-1 Camera Lens Kit.

## 6. COMPATIBILITY

The universal clip is suitable for most smartphones with a width of 70-100mm (2.8-3.9 inches). Please note that it may not fit small-sized iPhone Mini and SE series phones.

## Widely Used

Wide range of use, can be switched between indoor and outdoor at will.



**Figure 8:** Diagram illustrating the compatibility range of the phone mount (70-100mm) with various smartphones.

### 6.1. Macro Control for iOS Devices (iPhone 13 and newer)

For iPhone 13 and newer models, you may need to turn off macro controls on the camera screen and use the main camera for optimal results with the APEXEL macro lens.

1. Go to Settings.
2. Select Camera.
3. Turn on Macro Control.
4. Disable the macro function of your iPhone by tapping the macro icon in the camera app.

### 6.2. Macro Control for Samsung Galaxy Devices

For Samsung Galaxy S22/S23 Ultra, disable focus enhancement for the best macro photography experience.

1. Open the camera app.
2. Tap the close-up focus enhancement icon. When illuminated yellow, it is activated. Tap again to turn it off.



**Figure 9:** Instructions for adjusting macro control settings on iOS and Samsung Galaxy devices for optimal performance with the APEXEL macro lens.

## 7. ADVANCED USAGE

### 7.1. 37mm Filter Compatibility

The APEXEL TM6 lens is equipped with a 25mm to 37mm threaded adapter ring, allowing you to attach any standard 37mm filter (not included) to further enhance your photography.

Your browser does not support the video tag.

**Video 4:** Official APEXEL video demonstrating the compatibility of the lens with 37mm filters.

## 8. MAINTENANCE

- **Cleaning:** Use the provided cleaning cloth to gently wipe the lens surfaces. For stubborn smudges, use a lens cleaning solution specifically designed for optical glass.
- **Storage:** When not in use, store the lenses in the protective lens bag to prevent dust and scratches. Keep them in a dry, cool place away from direct sunlight.
- **Handling:** Avoid touching the lens surfaces with your fingers. Always handle the lenses by their barrels.

## 9. TROUBLESHOOTING

- **Vignetting (Dark Edges):** If you observe dark edges in your photos, ensure the lens is perfectly aligned with your phone's main camera. Adjust the phone mount's slider and tighten the screw. For telephoto mode, try zooming your phone's camera to 2.0X-2.4X to eliminate vignetting.
- **Blurry Images:** Ensure the lens is clean and free from smudges. Adjust the focus ring on the lens until the subject is sharp. For macro photography, ensure the subject is within the optimal focusing distance of 15-40cm. Using a tripod is highly recommended for stability, especially in macro mode.
- **Light Leakage:** If light leakage occurs, ensure the EVA pads are correctly placed to fill any gaps between the phone and the mount. Also, confirm that your phone case is removed, as some cases can prevent a flush fit.



10. SPECIFICATIONS



Feature	Detail
Model Name	TM6
Product Dimensions	3.9 x 7.3 x 7.3 inches
Item Weight	10.5 ounces
Lens Design	Prime
Image Stabilization	No image stabilization
Compatibility	Smartphones with width 70-100mm (2.8-3.9 inches)
Telephoto Magnification	6X
Macro Lens Focal Length	150mm
Filter Compatibility	37mm (via adapter ring)





11. WARRANTY AND SUPPORT

For warranty information and customer support, please refer to the contact details provided with your purchase or visit the official APEXEL website. Keep your proof of purchase for any warranty claims.

© 2025 APEXEL. All rights reserved.

Related Documents - TM6

 APL-TM6 <small>User Manual • 說明書 • manual • Nutzerhandbuch • Benutzeranweisung • Benutzerhandbuch</small>	<a href="#">APEXEL APL-TM6 Smartphone Telephoto Macro Lens User Manual</a> Comprehensive user manual for the APEXEL APL-TM6 smartphone lens kit, including telephoto and macro lenses. Learn about product features, installation, usage, precautions, and warranty.
 Apexel 60X Telescope Lens with Camera Tripod <small>User Manual • 說明書 • manual • Nutzerhandbuch • Benutzeranweisung • Benutzerhandbuch</small>	<a href="#">Apexel 60X Telescope Lens with Camera Tripod User Manual</a> Comprehensive user manual for the Apexel 60X Telescope Lens with Camera Tripod, covering setup, usage, and warranty information.

 <p>Apexel HD Clear 2-in-1 Kit 120° Wide Angle P 15X Macro // Apexel HD 110° Wide Angle Lens</p> <p>Apexel HD Clear 2-in-1 Kit 120° Wide Angle P 15X Macro // Apexel HD 110° Wide Angle Lens</p>	<p><a href="#">Apexel HD Clear 2-in-1 Kit 120° Wide Angle P 15X Macro // Apexel HD 110° Wide Angle Lens User Manual</a></p> <p>User manual for Apexel smartphone lenses, including the HD Clear 2-in-1 Kit (120° Wide Angle, 15X Macro) and HD 110° Wide Angle Lens. Covers installation, lens effects, usage, FAQs, and warranty information.</p>
 <p>APEXEL®</p> <p>APL-MS3IN1 MS200 MS150 MS100</p> <p>MS100</p>	<p><a href="#">APEXEL APL-MS3IN1 MS200 MS150 MS100 Smartphone Microscope User Manual</a></p> <p>Comprehensive user manual for the APEXEL APL-MS3IN1, MS200, MS150, and MS100 smartphone microscopes. Learn about product accessories, installation, usage, and warranty.</p>
 <p>Microscope Magnification Guide: Eyepieces, Objectives, and Barlow Lenses</p>	<p><a href="#">Microscope Magnification Guide: Eyepieces, Objectives, and Barlow Lenses</a></p> <p>A comprehensive guide to understanding microscope magnification, featuring explanations of eyepieces, objectives, Barlow lenses, and detailed magnification tables for various combinations. Includes information on APEXEL phone holders and electronic eyepieces.</p>
 <p>APEXEL MIC004 Wireless Microphone</p>	<p><a href="#">APEXEL MIC004 Wireless Microphone User Manual</a></p> <p>User manual for the APEXEL MIC004 Wireless Microphone, covering introduction, setup, usage instructions, technical specifications, and FCC compliance.</p>