

## CaDA C66014W

# CaDA C66014W Japanese Style Canteen House Building Set Instruction Manual

Model: C66014W

## 1. INTRODUCTION

Thank you for choosing the CaDA C66014W Japanese Style Canteen House Building Set. This 861-piece modular brick kit allows you to construct a detailed replica of a traditional Japanese canteen, complete with integrated lighting. This manual provides essential information for assembly, operation, maintenance, and troubleshooting to ensure a rewarding building experience.



Image 1.1: The CaDA C66014W Japanese Style Canteen House Building Set, showing the packaging and the fully assembled model.

## 2. SAFETY INFORMATION

**WARNING: CHOKING HAZARD - Small parts. Not for children under 3 years.**

- Keep all small parts away from young children and pets.
- Adult supervision is recommended during assembly, especially for younger builders (recommended age 14+).
- Do not ingest any parts.
- Dispose of packaging materials responsibly.

## 3. PACKAGE CONTENTS

Before beginning assembly, please verify that all components are present. Your CaDA C66014W set includes:

- 861 Building Block Pieces (sorted into numbered bags for different assembly stages)
- 1 x Instruction Manual

- 1 x Integrated Lighting Device (USB powered)
- Sticker Sheet (for decorative elements)
- Brick Separator (may be included)

If any parts are missing or damaged, please contact customer support.

## 4. ASSEMBLY INSTRUCTIONS

---

Follow the detailed, step-by-step instructions provided in the included booklet. The building process is divided into stages, with parts organized into corresponding numbered bags.

### 4.1. Preparation

1. Clear a well-lit, spacious work area.
2. Open the bags for the first assembly stage (typically marked '1'). Do not open all bags at once to avoid mixing parts.
3. Familiarize yourself with the instruction booklet. Pay attention to the color representations and part orientations.

### 4.2. Building Stages

The assembly generally proceeds in layers, starting with the base and progressing upwards. The set features a traditional Japanese two-story building design.

- **First Floor Construction:** Begin by building the base and the first floor, which houses the late-night canteen. This includes the open kitchen area and various interior details.
- **Second Floor Construction:** Proceed to assemble the second floor, representing the living quarters.
- **Exterior Details:** Attach exterior elements such as the traditional Japanese curtains, vintage stone lamps, vines, and the movable single seat.



Image 4.1: The CaDA C66014W set, highlighting the 861 pieces and the overall structure.

### 4.3. Integrating the Lighting Device

The lighting device is designed to be woven into the structure during assembly. Follow the instructions carefully to ensure proper placement and wiring.

1. Identify the designated areas for light placement within the model.
2. Carefully route the light wires as indicated in the manual to avoid pinching or damage.
3. Ensure all connections are secure.



Image 4.2: The assembled CaDA C66014W set with its integrated lighting activated, showcasing the illuminated interior and exterior details.

#### 4.4. Movable Parts

The model includes functional elements:

- The wooden sliding door on the first floor can be opened to reveal the interior kitchen.
- A single seat on the right side of the building can be opened and closed.





Image 4.3: Close-up showing the functional sliding door and window mechanisms of the CaDA C66014W model.

## 5. OPERATING INSTRUCTIONS FOR LIGHTS

The CaDA C66014W set includes an integrated lighting device to enhance the model's display.

1. Connect the USB plug of the lighting device to a compatible USB power source (e.g., USB wall adapter, power bank, computer USB port).
2. The lighting device typically features a control button or switch to cycle through different lighting modes (e.g., solid on, blinking, flashing).
3. Select your desired lighting mode. Note that some lighting units may not retain the last selected mode after being powered off.



Image 5.1: The CaDA C66014W model with its interior lights activated, creating a warm and inviting atmosphere.

## 6. MAINTENANCE

To ensure the longevity and appearance of your CaDA C66014W building set, follow these maintenance guidelines:

- **Cleaning:** Gently dust the model regularly with a soft brush or a can of compressed air. For stubborn dirt, wipe with a slightly damp cloth, avoiding excessive moisture. Do not use harsh chemicals or abrasive cleaners.
- **Storage:** Store the assembled model in a cool, dry place away from direct sunlight to prevent discoloration or warping of the plastic bricks.
- **Disassembly:** If disassembling, keep parts organized to facilitate future reassembly.

## 7. TROUBLESHOOTING

Here are solutions to common issues you might encounter:

- **Missing or Damaged Parts:** If you discover missing or damaged pieces during assembly, please contact CaDA customer support with details of the part number and quantity.

- **Loose Connections:** Ensure all bricks are firmly pressed together. CaDA bricks are designed for a secure fit. If a connection feels loose, double-check the instruction step.
- **Lights Not Working:**
  - a. Verify the USB cable is securely connected to both the lighting device and a functional power source.
  - b. Check if the power source is active.
  - c. Ensure no wires are pinched or damaged within the model.
- **Wobbly Structures (e.g., utility pole, back wall):** Some elements, like the utility pole or hinged back wall, may require careful positioning. If a part feels unstable, ensure all connecting bricks are fully engaged. For the back wall, ensure it clears the base when opening/closing.
- **Difficulty with Instructions:** If a step is unclear, review the preceding and following steps, and examine the image carefully for orientation. Online communities or CaDA's official resources may offer additional visual guides.

## 8. SPECIFICATIONS

Feature	Detail
Model Number	C66014W
Number of Pieces	861
Product Dimensions (Assembled)	5.1 x 6 x 9.5 inches (13.6cm x 17.6cm x 18.5cm)
Item Weight	2.9 pounds
Recommended Age	14 years and up
Lighting	Integrated LED (USB powered)





Image 8.1: Diagram showing the dimensions of the assembled CaDA C66014W model.

## 9. CUSTOMER SUPPORT

For further assistance, missing parts, or inquiries, please contact CaDA customer support through their official website or the retailer where the product was purchased.

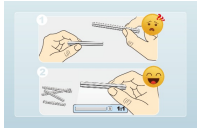
Visit the [CaDA Store on Amazon](#) for more information.

### Related Documents - C66014W

**CaDA**

#### [CaDA Master Mechanical Safe Building Set Instructions](#)

Detailed instructions for assembling the CaDA Master Mechanical Safe building block set. Learn how to construct and understand the mechanics of this intricate model.



### [CaDA Mazda 787B 1991 Model Building Kit Instructions](#)

Step-by-step assembly instructions for the CaDA C55029 Mazda 787B 1991 model building kit. Learn how to build this detailed replica of the iconic endurance race car.



### [CaDA C55052 Velocity Hurricane Building Instructions](#)

Step-by-step assembly guide for the CaDA C55052 Velocity Hurricane building toy car. Detailed instructions and parts list for constructing the model.



### [CaDA AE86 Trueno Initial D Building Blocks - Assembly Guide](#)

Detailed assembly instructions for the CaDA AE86 Trueno Initial D building block set (C61024). Learn how to construct this iconic car model.



### [CADA Street Coffee Shop Building Blocks Assembly Instructions C66005](#)

Step-by-step assembly guide for the CADA Street Coffee Shop building block set (C66005), featuring a personal introduction from the designer, Ohsojang.



### [CaDA C51001 Off-road Warrior Building Blocks Assembly Instructions](#)

Detailed assembly instructions for the CaDA C51001 Off-road Warrior remote-controlled building block set. Learn how to build this Technic-style RC vehicle.