

Manuals+

[Q & A](#) | [Deep Search](#) | [Upload](#)

manuals.plus /

› [KJK](#) /

› [KJK Trail Camera 36MP 2.7K User Manual](#)

KJK GE-HC201-2

KJK Trail Camera 36MP 2.7K User Manual

Model: GE-HC201-2

INTRODUCTION

Thank you for choosing the KJK Trail Camera. This mini game camera is designed for capturing high-quality images and videos of wildlife, for home security, or for monitoring outdoor areas. Featuring 36MP photo resolution, 2.7K video recording, advanced night vision, and a rapid 0.1s trigger time, this camera is built for reliable performance in various outdoor conditions. This manual provides detailed instructions for setup, operation, and maintenance to ensure optimal use of your device.



Image: The KJK Trail Camera, compact in size, shown resting on a hand, with a 32GB SD card positioned next to it, illustrating its small form factor and storage compatibility.

SAFETY INFORMATION

- Do not expose the camera to extreme temperatures outside its operating range (-22°F to 158°F / -10°C to 70°C).
- Ensure the battery compartment is securely closed to maintain IP66 waterproof rating.
- Use only recommended battery types (AA batteries). Do not mix old and new batteries or different battery types.
- Keep the camera away from strong magnetic fields.
- Do not attempt to disassemble or modify the camera. This will void the warranty.
- Dispose of batteries and electronic components responsibly according to local regulations.

PACKAGE CONTENTS

Please check the package to ensure all items are present:

- KJK Trail Camera (Model: GE-HC201-2)
- Mounting Strap
- USB Cable
- User Manual
- Stand (as per product specifications)

PRODUCT OVERVIEW

Familiarize yourself with the main components of your KJK Trail Camera.

Mini Exquisite



Image: The KJK Trail Camera displayed next to a smartphone, highlighting its compact and mini exquisite design with dimensions of 110mm (4.3in) height, 61mm (2.4in) width, and 88mm (3.5in) depth.

Key Features:

- **36MP Images & 2.7K Video:** Captures high-resolution photos and videos for clear detail.
- **0.1s Trigger Speed:** Ensures rapid capture of moving subjects.
- **130° Wide-Angle Lens:** Provides a broad field of view for comprehensive coverage.

- **Low-Glow IR LEDs:** Offers discreet night vision up to 75 feet without disturbing wildlife.
- **IP66 Weatherproof:** Designed to withstand rain, dust, and extreme temperatures.
- **2.0" HD Color Screen:** For easy menu navigation and instant playback.

SETUP

1. Battery Installation

The camera requires 4 AA batteries (not included). For best performance and battery life, use high-quality alkaline or rechargeable AA batteries.

1. Open the camera's latch and gently open the housing.
2. Locate the battery compartment.
3. Insert the AA batteries according to the polarity indicators (+/-) inside the compartment.
4. Close the battery compartment and ensure the latch is securely fastened to maintain waterproofing.



Image: An open KJK Trail Camera revealing the internal battery compartment, ready for AA battery insertion.

2. SD Card Installation

A Micro SD card (up to 32GB, Class 10 or higher recommended) is required to store photos and videos (not included).

1. With the camera powered off, locate the SD card slot.
2. Insert the Micro SD card with the metal contacts facing down until it clicks into place.
3. To remove, gently push the card in until it clicks, then release, and it will spring out.

3. Mounting the Camera

The camera can be mounted using the included strap or a tripod (not included).

- **Strap Mounting:** Thread the provided mounting strap through the slots on the back of the camera. Securely fasten the camera to a tree or pole at the desired height and angle.
- **Tripod Mounting:** The camera has a standard 1/4"-20 threaded insert on the bottom for tripod mounting.
- Ensure the camera is stable and pointed towards the area you wish to monitor.



Image: The KJK Trail Camera securely mounted to a tree trunk using its included strap, demonstrating a typical outdoor setup.

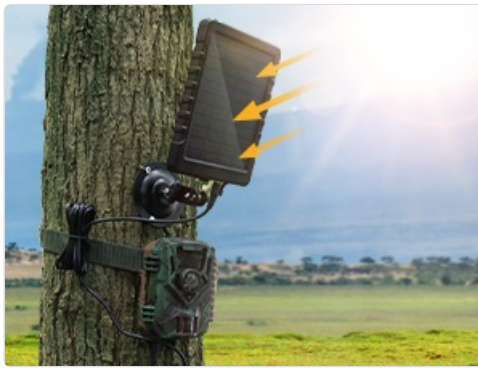


Image: The KJK Trail Camera connected to an external solar panel, illustrating an alternative power source setup for extended outdoor use.

OPERATING INSTRUCTIONS

1. Powering On/Off

Locate the power switch inside the camera housing. Slide it to the "ON" position to power on the camera. Slide it to "OFF" to power off.

2. Menu Navigation

Use the control buttons (usually labeled Menu, Up, Down, Left, Right, OK) to navigate the camera's settings on the 2.0" HD color screen.



Image: A close-up of the KJK Trail Camera's internal screen, showing a clear image of a fox captured at night, along with date, time, and temperature information.

3. Mode Selection

The camera typically offers three modes:

- **Photo Mode:** Captures still images when triggered.
- **Video Mode:** Records video clips when triggered.
- **Photo + Video Mode:** Captures a photo followed by a video clip when triggered.

Select your desired mode from the main menu.

4. Settings Configuration

Access the "Menu" to adjust various settings:

- **Photo Resolution:** Select from available options (e.g., 36MP, 24MP).
- **Video Resolution:** Choose between 2.7K, 1080P, etc.
- **PIR Sensitivity:** Adjust the motion sensor's sensitivity (High, Medium, Low) based on environmental conditions to minimize false triggers.
- **Trigger Interval:** Set the delay between consecutive triggers.
- **Time Lapse:** Configure the camera to take photos at set intervals regardless of motion.
- **Date/Time Stamp:** Enable or disable the display of date, time, and temperature on captured media.
- **Format SD Card:** Important for preparing a new SD card or clearing an old one.

36MP Ultra clear Image 2.7K HD Resolution

Enjoy fantastic visual feasts in nature



36MP

24MP

Image: A visual comparison demonstrating the superior clarity and detail of a 36MP image versus a 24MP image captured by the KJK Trail Camera, featuring flamingos.

0.1S Trigger Time

Capture Exciting Moments

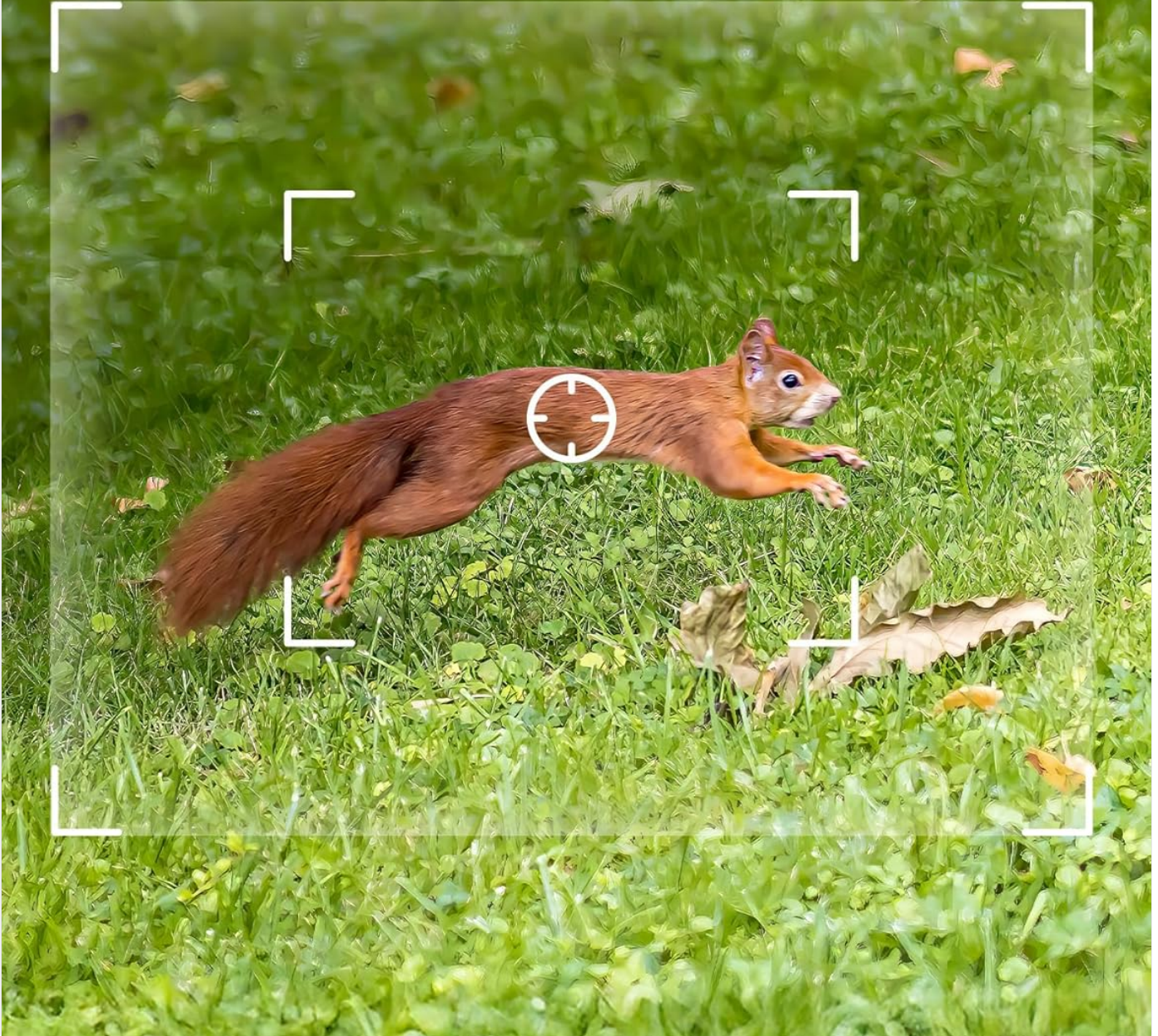


Image: A dynamic shot illustrating the KJK Trail Camera's 0.1-second trigger time, capturing a squirrel in mid-leap, highlighting its ability to freeze fast-moving action.

Super Night Vision

22pcs 850nm IR lights, 75ft night vision distance

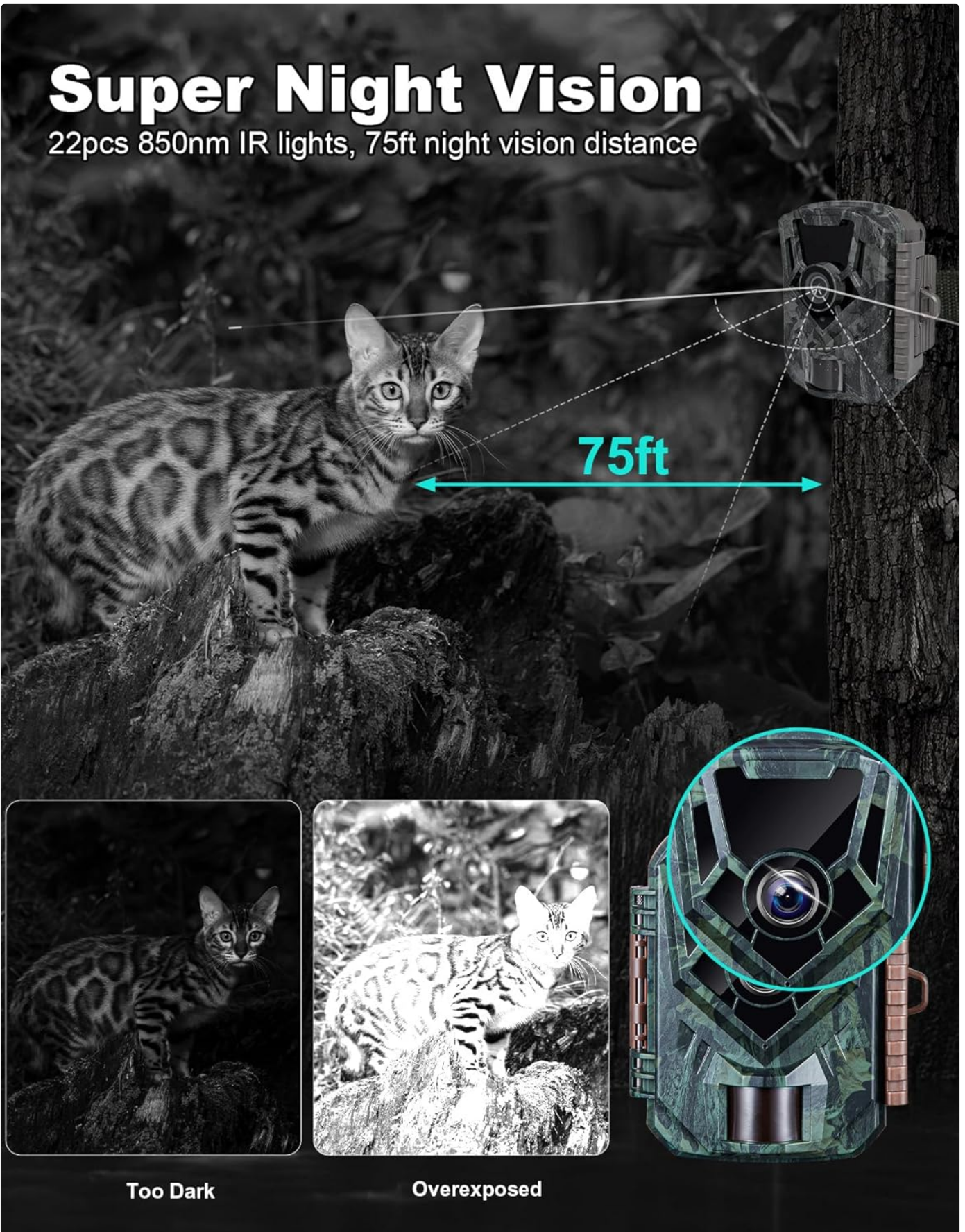


Image: A comparison demonstrating the KJK Trail Camera's "Super Night Vision" capability with 22pcs 850nm IR lights, showing clear images of a cat at 75 feet in total darkness, contrasting with "Too Dark" and "Overexposed" examples.

130° Wide-angle Vision

Capture more details and elevate your wildlife observation experience



Image: The KJK Trail Camera's 130-degree wide-angle vision is depicted, showing its expansive coverage capturing multiple deer in a field, emphasizing its ability to observe a broader area.

5. Viewing Playback

To review captured media:

1. Switch the camera to "ON" mode.
2. Navigate to the playback mode using the menu buttons.
3. Use the Up/Down buttons to scroll through photos and videos.
4. Press "OK" to view a selected item.

5. To transfer files, connect the camera to a computer using the USB cable or insert the SD card directly into a card reader.

MAINTENANCE

- **Cleaning:** Use a soft, dry cloth to clean the camera lens and body. Do not use abrasive cleaners or solvents.
- **Battery Care:** Remove batteries if the camera will not be used for an extended period to prevent leakage.
- **Storage:** Store the camera in a cool, dry place when not in use.
- **Firmware Updates:** Check the manufacturer's website periodically for any available firmware updates to improve performance.

IP66 Waterproof

Rain, dust, and fog resistant



Sturdy



-22 °F Ice & Snow



Rain



158 °F High Temperature



Image: The KJK Trail Camera mounted on a tree in the rain, illustrating its IP66 waterproof rating and resistance to dust, fog, ice, snow (-22°F), and high temperatures (158°F).

TROUBLESHOOTING

Problem	Possible Cause	Solution
---------	----------------	----------

Problem	Possible Cause	Solution
Camera not powering on.	Low or dead batteries; incorrect battery polarity; power switch off.	Replace batteries; check polarity; ensure switch is "ON".
No photos/videos captured.	SD card full or not inserted correctly; incorrect mode; PIR sensitivity too low.	Format/replace SD card; reinsert SD card; select correct mode; increase PIR sensitivity.
Poor night vision images.	IR LEDs obstructed; subject too far.	Clear obstructions; ensure subject is within 75ft range.
False triggers.	PIR sensitivity too high; camera facing moving branches/water.	Decrease PIR sensitivity; reposition camera to avoid environmental triggers.

SPECIFICATIONS

Feature	Detail
Model	GE-HC201-2
Image Resolution	Up to 36MP
Video Resolution	Up to 2.7K (1920p)
Trigger Speed	0.1 seconds
PIR Detection Angle	130°
Night Vision Range	Up to 75 feet (22pcs 850nm IR LEDs)
Display Screen	2.0" HD Color Screen
Storage	Micro SD Card (up to 32GB, Class 10 recommended)
Power Source	4 x AA Batteries (Battery Powered)
Waterproof Rating	IP66
Operating Temperature	-22°F to 158°F (-10°C to 70°C)
Dimensions (L x W x H)	4 x 3 x 6 inches
Weight	10.5 ounces
Connectivity	USB

APPLICATIONS

The KJK Trail Camera is versatile and can be used for a variety of purposes:

- **Wildlife Observation:** Capture photos and videos of animals in their natural habitat.
- **Home Security:** Monitor your property for unauthorized activity.

- **Camping Safety:** Enhance security around your campsite.
- **Farm Monitoring:** Keep an eye on livestock or equipment.
- **Plant Growth Monitoring:** Document the growth of plants over time using time-lapse features.
- **Hunting Expeditions:** Scout game trails and observe animal patterns.

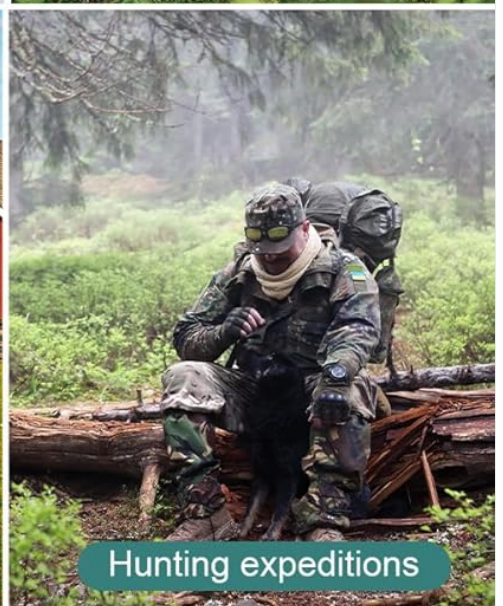
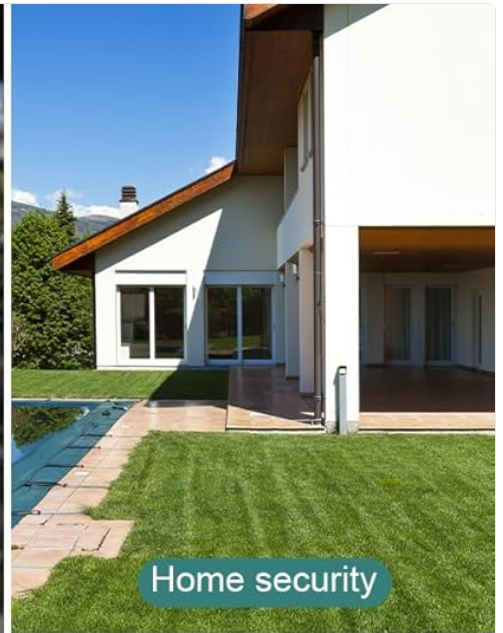


Image: A collage showcasing diverse applications for the KJK Trail Camera, including wildlife observation (fox), home security, camping safety, monitoring plant growth, farm protection, and hunting expeditions.

WARRANTY AND SUPPORT

For warranty information and technical support, please refer to the contact details provided with your purchase or visit the official KJK website. Keep your purchase receipt as proof of purchase for warranty claims.

For additional assistance, you may visit the KJK Store on Amazon: [KJK Store](#)