

Machenike 7940H

Machenike Machcreator Mini2 7940H Mini Desktop User Manual

Model: 7940H

1. INTRODUCTION

This manual provides essential information for the setup, operation, and maintenance of your Machenike Machcreator Mini2 7940H Mini Desktop. Please read this guide thoroughly before using the device to ensure optimal performance and longevity.

The Machenike Machcreator Mini2 7940H is a compact and powerful mini desktop computer designed for various computing tasks. It features an AMD Ryzen 9 7940H processor, AMD Radeon Graphics, 16GB DDR5 RAM, and a 1TB PCIe M.2 SSD, running on Windows 11 Home.



Image 1.1: Front view of the Machenike Machcreator Mini2 7940H Mini Desktop, showcasing its compact design and front

ports.

2. PACKAGE CONTENTS

Verify that all items listed below are included in your product packaging:

- Machenike Mini Desktop (Machcreator Mini2 7940H)
- Power Adapter
- User Manual (this document)
- VESA Mounting Bracket (for wall or monitor mounting)

3. INITIAL SETUP

Follow these steps to set up your Machenike Machcreator Mini2 7940H Mini Desktop:

1. **Connect to Power:** Connect the power adapter to the DC-in port on the mini PC, then plug the adapter into a power outlet.
2. **Connect to Display:** Connect your monitor or display device to the mini PC using an HDMI or DisplayPort cable.
3. **Connect Peripherals:** Connect your keyboard, mouse, and any other USB devices to the available USB ports.
4. **Network Connection:** For wired internet, connect an Ethernet cable to one of the RJ45 ports. For wireless internet, ensure Wi-Fi is enabled in the operating system settings after initial boot.
5. **Power On:** Press the power button located on the front of the device. The system will boot into Windows 11 Home.

The Machenike Machcreator Mini2 includes a VESA mounting kit, allowing for flexible placement options, such as mounting behind a compatible monitor.

Free wall-mounted kit

Includes a VESA mounting bracket, allowing it to be attached to the back of monitors with VESA-standard holes. This design enables a hidden installation experience, creating a more streamlined and clutter-free desktop

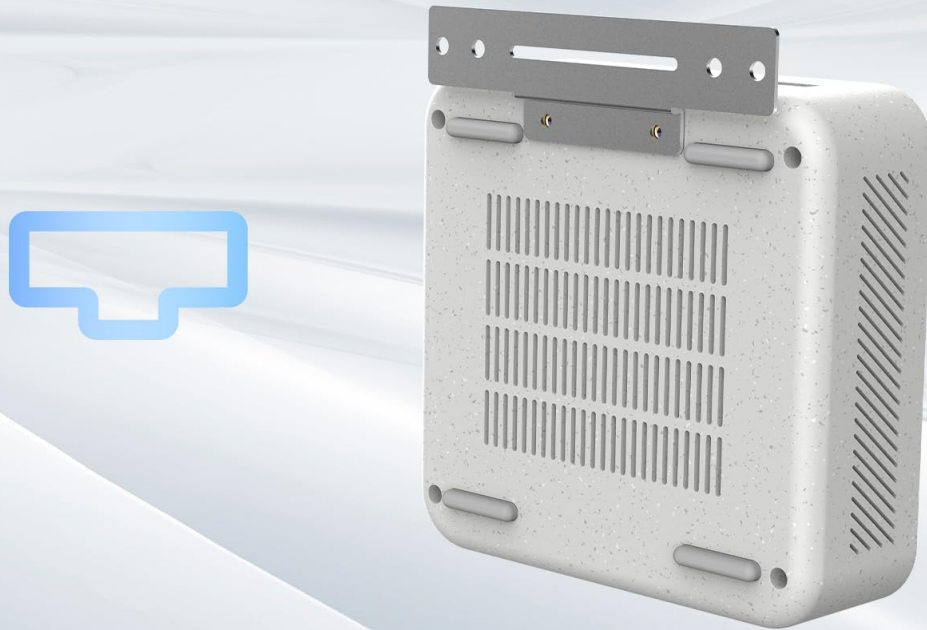


Image 3.1: Rear view of the Machenike Machcreator Mini2 showing the VESA mounting bracket attachment points.

4. OPERATING INSTRUCTIONS

4.1 Power On/Off

- **To Power On:** Press the power button on the front panel.
- **To Power Off:** From Windows, click Start > Power > Shut down. Alternatively, press and hold the power button for 5 seconds to force a shutdown (use only when necessary).

4.2 Port Overview

The Machenike Machcreator Mini2 7940H features a variety of ports for connectivity:

Multi Ports Multi Output



Preposition:

Dual USB 3.2
Thunderbolt 4 Type C
3.5mm Audio Interface

Postposition:

Dual USB 3.2
DP 1.4
HDMI 2.0
Dual 2.5G Network interface
Kensington Safety lock port



Image 4.1: Diagram illustrating the front and rear port configurations of the Machenike Machcreator Mini2.

• Front Ports:

- 1 x USB Type-C (Thunderbolt 4 compatible, supports DP1.4+HDMI2.0, 40Gbps data transfer, external graphics card, portable screen connection, emergency power supply)
- 2 x USB 3.2 Gen2 Type-A ports
- 1 x 3.5mm Audio Jack

• Rear Ports:

- 2 x RJ45 (Dual 2.5G Network Interface)
- 2 x USB 3.2 Gen2 Type-A ports
- 1 x HDMI 2.0
- 1 x DisplayPort 1.4
- 1 x Kensington Safety Lock Port

5. MAINTENANCE AND CARE

- **Cleaning:** Use a soft, dry cloth to clean the exterior of the mini PC. Avoid liquid cleaners or abrasive materials. Ensure ventilation openings are free from dust and debris.

- **Ventilation:** Ensure the mini PC is placed in a well-ventilated area. Do not block the air vents to prevent overheating.
- **Software Updates:** Regularly update your Windows operating system and device drivers to maintain system stability and security.
- **Environmental Conditions:** Operate the device within recommended temperature and humidity ranges. Avoid extreme temperatures or direct sunlight.

6. TROUBLESHOOTING

6.1 Common Issues and Solutions

No Display on Monitor:

- Ensure the monitor is powered on and correctly connected to the mini PC via HDMI or DisplayPort.
- Verify the correct input source is selected on your monitor.
- Try a different display cable or monitor if available.

Device Does Not Power On:

- Check if the power adapter is securely connected to both the mini PC and the power outlet.
- Ensure the power outlet is functional.

Bluetooth Connectivity Issues:

- Ensure Bluetooth is enabled in Windows settings.
- Restart the mini PC and the Bluetooth device.
- Update Bluetooth drivers from the Machenike support website.
- Remove and re-pair the Bluetooth device.

Windows Activation Error:

- Ensure your mini PC is connected to the internet.
- If the issue persists, contact Machenike support with your product details.

System Performance is Slow:

- Close unnecessary applications running in the background.
- Check for sufficient free space on the SSD.
- Ensure the mini PC is well-ventilated to prevent thermal throttling.
- Run a system scan for malware or viruses.

7. TECHNICAL SPECIFICATIONS

Below are the detailed technical specifications for the Machenike Machcreator Mini2 7940H Mini Desktop:



Image 7.1: Overview of key features including RAM, SSD, Wi-Fi, heat dissipation, CPU, and graphics.

Feature	Specification
Processor	AMD Ryzen 9 7940H (8 Cores, 16 Threads, 16MB Cache, 4.0 GHz Base, up to 5.2 GHz Max Turbo)
Graphics	AMD Radeon Graphics (Integrated)
RAM	16GB DDR5 SODIMM (4800 MHz)
Storage	1TB PCIe M.2 SSD
Operating System	Windows 11 Home
Wireless Connectivity	Wi-Fi 6 (802.11ax), Bluetooth
Max Screen Resolution	3840x2160
USB Ports	4 x USB 3.2 Gen2 Type-A, 1 x USB Type-C (Thunderbolt 4)

Feature	Specification
Video Output	1 x HDMI 2.0, 1 x DisplayPort 1.4
Network	2 x RJ45 (Dual 2.5G)
Audio	1 x 3.5mm Audio Jack
Dimensions (LxWxH)	5.12 x 5.00 x 1.85 inches (130 x 127 x 47 mm)
Weight	3.31 lbs (1.5 kg)
Color	White



Image 7.2: Diagram illustrating the physical dimensions of the Machenike Machcreator Mini2.

8. WARRANTY AND SUPPORT

Your Machenike Machcreator Mini2 7940H Mini Desktop is covered by a manufacturer's warranty. Please refer to the warranty card included in your packaging for specific terms and conditions, including the warranty period and coverage details.

For technical support, troubleshooting assistance, or warranty claims, please contact Machenike customer service through their official website or the contact information provided with your product documentation. When contacting support, please have your product model number (7940H) and purchase information readily available.

© 2025 Machenike. All rights reserved.