

[Manuals.plus](#) /

> [CHiQ](#) /

> CHiQ CSD206NEID 206L Vertical Freezer Instruction Manual

CHiQ CSD206NEID

CHiQ CSD206NEID 206L Vertical Freezer Instruction Manual

Model: CSD206NEID | Brand: CHiQ

1. INTRODUCTION

This manual provides essential information for the safe and efficient operation of your CHiQ CSD206NEID 206L Vertical Freezer. Please read these instructions carefully before installation and use, and retain them for future reference. This appliance features Total No Frost technology, an Inverter Compressor, Multi Air Flow cooling, and a convertible freezer/refrigerator function.





Front view of the CHIQ CSD206NEID 206L Vertical Freezer.



The CHIQ CSD206NEID 206L Vertical Freezer integrated into a modern kitchen environment.

2. SETUP AND INSTALLATION

2.1 Unpacking

Carefully remove all packaging materials, including protective films and tapes. Inspect the appliance for any damage during transit. Keep packaging materials for potential future transport or returns.

2.2 Placement

Place the freezer on a firm, level surface away from direct sunlight, heat sources, and moisture. Ensure adequate ventilation around the appliance. Maintain a minimum clearance of 10 cm (4 inches) from walls and other objects to allow for proper air circulation. The compact design (54.7 cm depth x 59.9 cm width x 170.5 cm height) is suitable for various kitchen sizes.

Detalles



Dimensions of the CHIQ CSD206NEID Vertical Freezer: 1700mm height, 590mm width, 545mm depth.

2.3 Leveling

Adjust the adjustable feet at the bottom of the freezer to ensure it is perfectly level. This prevents vibrations and ensures efficient operation.

Lista de Embalaje



Pies Ajustables ●
Bandeja de Hielos ●
Pala para Hielo ●



Included accessories: Adjustable feet, ice tray, and ice scoop.

2.4 Power Connection

After placing the freezer, wait at least 4 hours before plugging it into a power outlet. This allows the refrigerant gas to settle, ensuring optimal performance and longevity. Connect the appliance to a grounded 220V power supply (Type F: 2 pins, Germany and Spain compatible).

2.5 Door Reversal

The door hinge is reversible, allowing the door to open from either the left or right side to suit your kitchen layout. Refer to the detailed instructions in the user manual for the door reversal procedure. The original hinges are on the right side.



Puerta Invertible

La puerta se puede invertir para abrir a la izquierda o derecha, adaptándose a diferentes diseños de cocina y hábitos de uso personal para máxima conveniencia.

Pasos para la sustitución



1. Retira las bisagras superior e inferior (las bisagras originales se encuentran en el lado derecho).



2. Retira la puerta.



3. Elige el otro lado para instalar las bisagras superior e inferior.

Steps for reversing the door: 1. Remove top and bottom hinges. 2. Remove the door. 3. Install hinges on the opposite side.

3. OPERATING INSTRUCTIONS

3.1 Control Panel and Temperature Settings

The freezer features a digital temperature control with an LED display. You can adjust the temperature and select operating modes using the control panel located on the door.

Control de Temperatura 5 Niveles

5 modos de temperatura preestablecidos (Congelación Rápida, Congelación Profunda, Congelación Normal, Congelación Suave, Frigorífico) para satisfacer diferentes requisitos de almacenamiento de alimentos.

- Modo nevera: 2-8 °C**
Ideal para conservar frutas, verduras y productos lácteos.
- Modo de congelación (-16 a -24 °C)**
Almacenamiento a largo plazo de carnes y mariscos con congelación personalizable.
- Modo de congelación suave (-3 °C)**
Almacenamiento de carne a corto plazo: lista para cortar sin necesidad de descongelarla, sin cristales de hielo.
- Modo de enfriamiento rápido (2 °C)**
Enfría rápidamente bebidas o alimentos perecederos.
- Modo de congelación rápida (-32 °C)**
La congelación instantánea a temperatura ultrabaja conserva la frescura a nivel celular.

*Para obtener información sobre el uso específico, consulte el manual de usuario.

The control panel offers 5 preset temperature modes: Quick Freezing, Deep Freezing, Normal Freezing, Soft Freezing, and Refrigerator mode.

3.2 Convertible Modes (Freezer & Refrigerator)

This appliance offers flexible storage with its convertible function, allowing it to operate as either a freezer or a refrigerator. Use the control panel to switch between modes:

- **Refrigerator Mode:** Maintains temperatures between 2°C and 8°C, ideal for fresh foods.
- **Freezer Mode:** Maintains temperatures between -16°C and -24°C for long-term frozen storage.

Conmutación con Un Toque

Frigorífico & Congelador



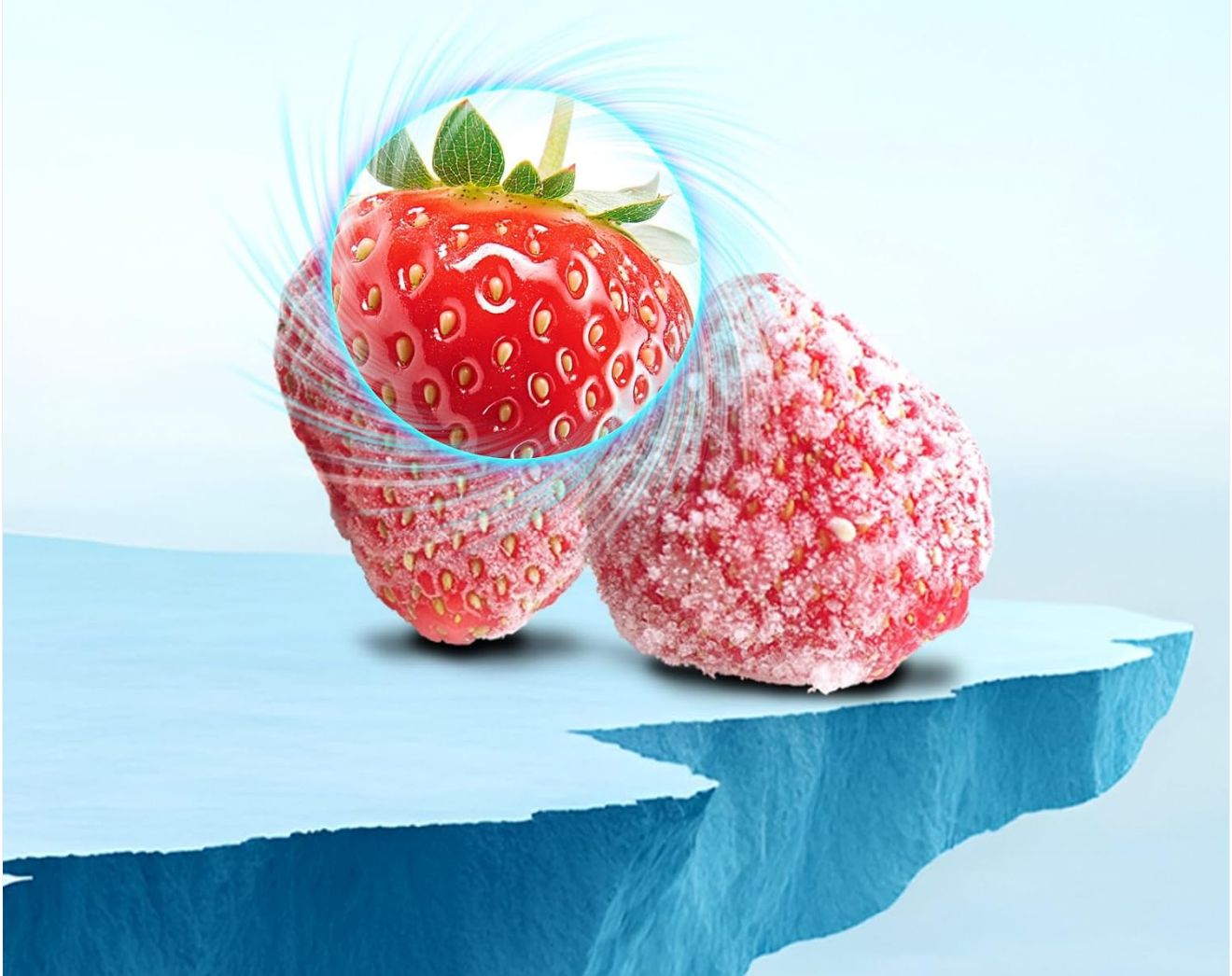
Illustration of the convertible function: Refrigerator Mode (2-8°C) and Freezer Mode (-16 to -24°C).

3.3 Total No Frost Technology

The Total No Frost system prevents ice buildup, eliminating the need for manual defrosting. This technology ensures consistent cooling and maintains food freshness more effectively.

Tecnología Total No Frost

Enfriamiento Sin Esfuerzo



Total No Frost technology ensures effortless cooling by preventing ice formation.

3.4 Multi Air Flow System

The Multi Air Flow system circulates cold air evenly throughout the interior, ensuring uniform temperature distribution. This precise temperature control helps preserve food quality and extends its shelf life.

Tecnología Multi Air Flow

La circulación de aire multicanal distribuye el aire frío uniformemente por todo el interior. En comparación con frigoríficos tradicionales, el control de temperatura es más preciso y uniforme para una frescura duradera



Multi Air Flow technology distributes cold air uniformly for consistent cooling.

3.5 Inverter Compressor and Quiet Operation

Equipped with an Inverter Compressor, the freezer adjusts its speed according to cooling demand, reducing energy consumption and operating noise. The sound level is approximately 39dB, making it quieter than a normal conversation.

Funcionamiento Ultra-Silencioso

La tecnología del compresor Inversor reduce el ruido de funcionamiento a solo 39dB, más silencioso que una conversación normal, creando un ambiente hogareño pacífico.



The Inverter Compressor ensures ultra-quiet operation at only 39dB.

3.6 Ultra-Low Freezing (-32°C)

The freezer can reach an ultra-low temperature of -32°C, rapidly freezing food to preserve nutrients and extend food life by up to 30%.

Congelación Ultra-Baja -32°C

Modo Ahorro de Energía



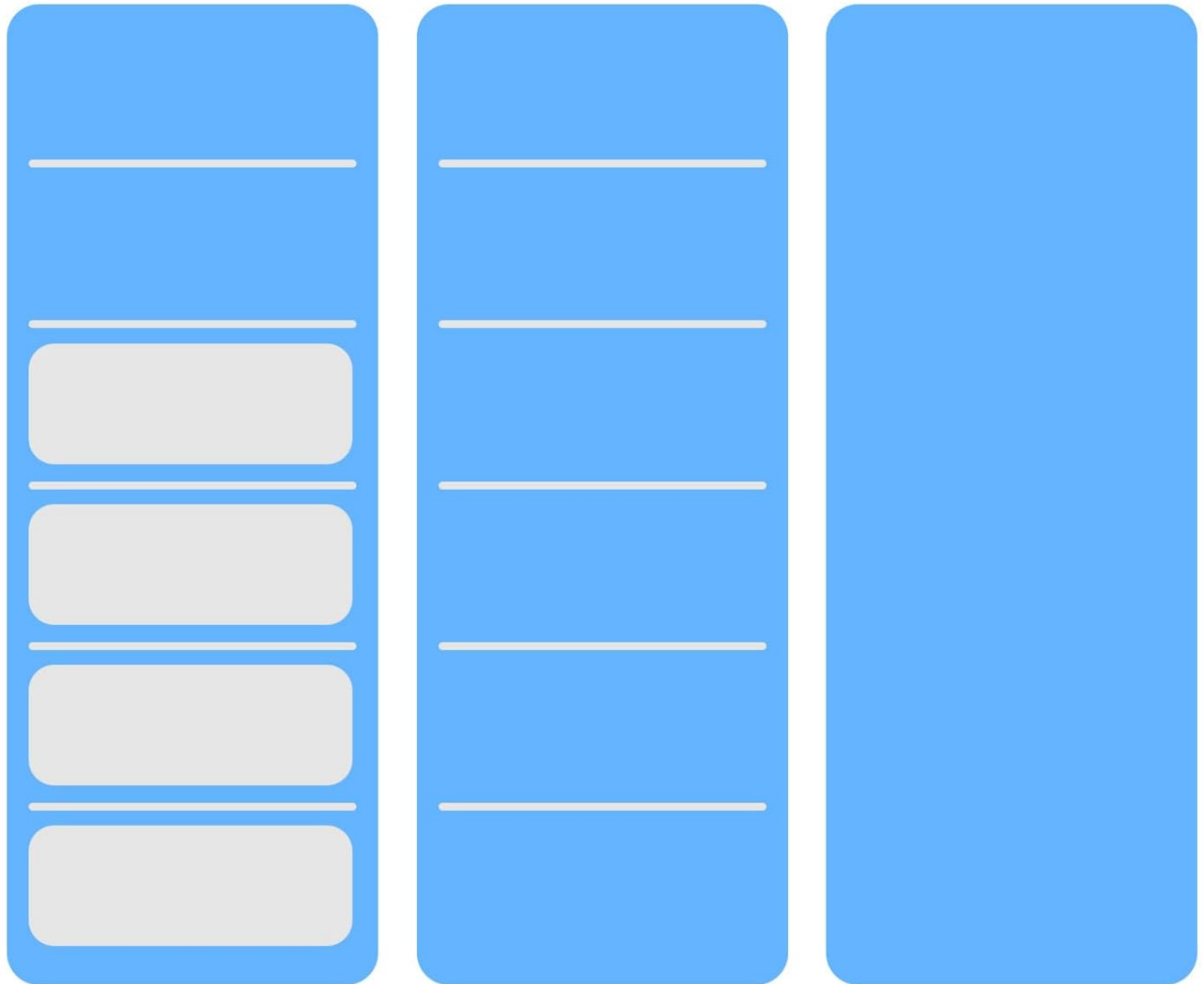
Ultra-Low Freezing at -32°C helps preserve food quality and extend shelf life.

3.7 Flexible Storage Space

The interior features adjustable shelves and removable drawers, allowing you to customize the storage space to accommodate various food items and sizes.

Espacio Estante Flexible

Cajones Ajustables & Separadores Extraíbles se adaptan a cualquier carga



Flexible shelf space with adjustable drawers and removable dividers to adapt to any load.

3.8 Door Open Alarm

An audible alarm will sound if the door is left open for an extended period, helping to prevent energy waste and frost accumulation.



Timbre de puerta



Asa auxiliar

Features include a door chime and an auxiliary handle for convenience.

4. MAINTENANCE

4.1 Cleaning

Regularly clean the interior and exterior of the freezer with a soft cloth and mild detergent. Avoid abrasive cleaners or sharp objects that could damage surfaces. Ensure the appliance is unplugged before cleaning.

4.2 Defrosting

Due to the Total No Frost technology, manual defrosting is not required. The system automatically prevents ice buildup.

4.3 General Care

The freezer features a scratch-resistant coating on its door material (Stainless Steel with ABS Plastic Coating) for enhanced durability. Ensure the door seals are clean and intact to maintain energy efficiency.

Detalles Premium

Iluminación LED Interior

Luces LED suaves iluminan el interior claramente, facilitando la búsqueda de alimentos sin deslumbramiento ni generación de calor.



Revestimiento Resistente a Arañazos

Revestimiento de alta calidad resiste a arañazos y manchas diarias, manteniendo el congelador como nuevo durante años.



Pies Antideslizantes

Pies de caucho previenen el deslizamiento del congelador, garantizando colocación estable incluso en pisos lisos.



Timbre de puerta

Una alarma sonora avisa a los usuarios de las puertas que no se han cerrado, lo que evita el desperdicio de energía y la acumulación de escarcha.



Premium details include LED interior lighting, a scratch-resistant coating, anti-slip feet, and a door chime.

5. TROUBLESHOOTING

If you encounter issues with your freezer, refer to the following common problems and solutions before contacting customer service.

- **Appliance not cooling:** Check if the power cord is securely plugged in. Ensure the temperature settings are correct. Verify that the appliance is not placed near a heat source or in direct sunlight.
- **Unusual noise:** Ensure the freezer is level and stable. Check if any objects inside are vibrating against each other. The Inverter Compressor operates quietly, but slight operational sounds are normal.
- **Door not closing properly:** Check for obstructions preventing the door from closing. Ensure door seals are clean and undamaged.
- **Excessive frost (unlikely with No Frost):** If frost appears, ensure the door is not left open frequently and that the door seal is intact.

6. SPECIFICATIONS

Feature	Specification
Model Number	CSD206NEID
Capacity	206 Liters
Dimensions (D x W x H)	59.9 cm x 54.7 cm x 170.5 cm
Weight	53 kg
Energy Efficiency Class	D
Annual Energy Consumption	178 kWh/year
Noise Level	39 dB
Defrost System	No Frost

Feature	Specification
Special Features	Door open alarm, Inverter Compressor, Digital temperature control, LED display, Convertible Freezer
Number of Shelves	6 (Glass)
Door Orientation	Right Hinge Reversible
Color	Black
Door Material	Stainless Steel with ABS Plastic Coating
Power Source	Corded Electric
Voltage	220 Volts
Plug Type	Type F: 2 pins (Germany and Spain)
Included Components	1 * Ice Cube Tray, 1 * Egg Rack, User Manual





EU Energy Label for the CSD206NEID, indicating Class D energy efficiency and 178 kWh/annum consumption.





Product information sheet with detailed technical specifications. For more information, scan the QR code or visit eprel.ec.europa.eu/qr/2233454.

7. WARRANTY AND SUPPORT

7.1 Product Warranty

Your CHIQ CSD206NEID Vertical Freezer comes with a 2-year product warranty. Additionally, the compressor is covered by a 12-year replacement warranty.

7.2 Customer Support

For any inquiries, technical assistance, or warranty claims, please contact CHIQ customer service. Professional telephone support is available during business days.

POLÍTICAS DE SERVICIO



Devolución sin motivos en Amazon durante 30 días.



2 años de garantía para todos los productos (3 años para ES).



RF: 12 años de reemplazo para el compresor.



WM: 12 años de reemplazo para el motor.



Entrega a domicilio opcional (disponible para ciertos productos).



Atención al cliente telefónica por parte de profesionales durante los días laborables.

CHiQ service policies: 30-day Amazon returns, 2-year product warranty (3 years for ES), 12-year compressor replacement, optional home delivery, and professional phone support.



Atención al cliente local



Embalajes ecológicos



Soluciones positivas



Bienestar social

CHiQ's commitment to local customer service, ecological packaging, positive solutions, and social well-being.