

## Yamokizy 4K Night Vision Binoculars

# Yamokizy 4K Night Vision Binoculars Instruction Manual

Model: 4K Night Vision Binoculars

Brand: Yamokizy

## INTRODUCTION

Thank you for choosing the Yamokizy 4K Night Vision Binoculars. This device is designed for enhanced observation in various lighting conditions, from daylight to complete darkness. Featuring a 3-inch HD display, 10X digital zoom, and 7-level infrared adjustment, it allows for clear viewing, photo capture, and video recording. Please read this manual carefully to ensure proper operation and maintenance of your device.



Image: Yamokizy 4K Night Vision Binoculars highlighting key features.

## WHAT'S IN THE BOX

Upon opening your package, please verify that all the following items are included:

- 1 x Yamokizy 4K Night Vision Binoculars
- 1 x 32GB TF Card (pre-inserted in the card slot)
- 1 x Type-C Data Cable
- 1 x Neck Strap

- 1 x User Manual

## PRODUCT OVERVIEW: COMPONENTS AND CONTROLS

Familiarize yourself with the various parts and controls of your night vision binoculars for optimal use.



Image: Front view of the binoculars.



Three  
modes

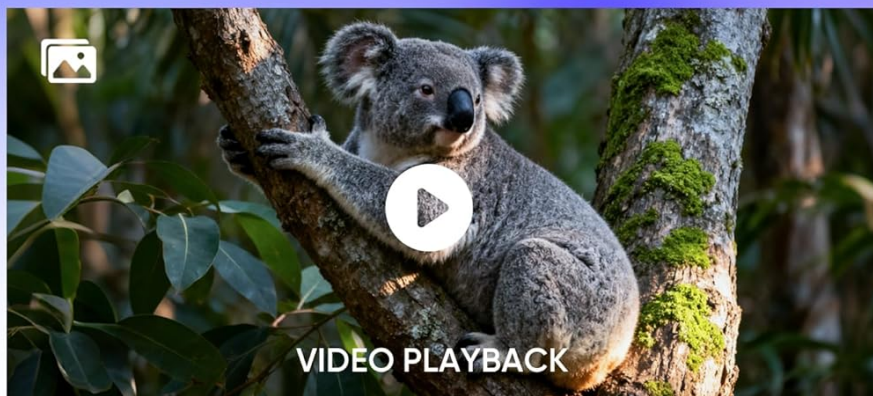


Image: Top view with control buttons.

## Control Buttons:

- **Power Button:** Press and hold to turn the device on/off. Short press to access playback mode.
- **Screen Brightness Adjustment Button:** Adjusts the brightness of the internal display.
- **IR Increase Button (+IR):** Increases the infrared illumination level (IR1 to IR7).
- **IR Decrease Button (-IR):** Decreases the infrared illumination level.
- **SNAP Button:** Short press to take a photo. Long press to start/stop video recording.
- **MENU Button:** Accesses the device settings menu.

## Other Components:

- **Manual Focus Wheel:** Located on the objective lens, rotate to adjust focus for clear images.
- **USB Port (Type-C):** For charging and data transfer.
- **TF Card Slot:** For inserting the 32GB TF card (included).
- **1/4"-20 Threaded Mount:** Located at the bottom for tripod compatibility.



## SETUP

---

1. **Charge the Device:** Connect the binoculars to a power source using the provided Type-C data cable. The battery indicator on the display will show charging status. Ensure the device is fully charged before first use.
2. **Insert TF Card:** The 32GB TF card is typically pre-inserted. If not, open the TF card slot cover and gently insert the card with the gold contacts facing down until it clicks into place.
3. **Attach Neck Strap:** Secure the neck strap to the designated loops on the binoculars for convenient carrying and to prevent accidental drops.

## OPERATING INSTRUCTIONS

---

### Power On/Off

- To power on, press and hold the **Power Button** for a few seconds.
- To power off, press and hold the **Power Button** again until the display turns off.

### Day & Night Use

The binoculars are designed for both day and night observation. For optimal performance:

- **During Daytime:** Ensure the infrared (IR) function is turned off. The device will capture full-color images.
- **During Nighttime or Low-Light:** Turn on the infrared (IR) function. The device will display black and white images for enhanced visibility in darkness.



Image: Examples of day and night vision, showing color during the day and black & white with IR at night.

### Adjusting IR Levels

The device features 7 infrared adjustment levels (IR1 to IR7) to adapt to varying degrees of darkness.

- Press the **+IR Button** to increase the infrared brightness.
- Press the **-IR Button** to decrease the infrared brightness.
- Adjust the level until you achieve the clearest possible image in your environment.



Image: Visual representation of 7 IR levels and their effect on image brightness.

## Digital Zoom & Manual Focus

- **Digital Zoom:** The binoculars offer up to 10X digital zoom. While observing, long press the **+IR Button** to zoom in and the **-IR Button** to zoom out.
- **Manual Focus:** Rotate the **Manual Focus Wheel** on the objective lens to achieve a sharp image of your subject. This is crucial for clarity, especially at different distances.



Image: Demonstrating 10X digital zoom and the manual focus wheel for clarity.

## Photo & Video Capture

Capture your observations with ease:

- **To Take a Photo:** While in observation mode, short press the **SNAP Button**. The device will capture an image and save it to the TF card.
- **To Record Video:** While in observation mode, long press the **SNAP Button** to start recording. A recording indicator will appear on the screen. Long press the **SNAP Button** again to stop recording. Videos are saved to the TF card.



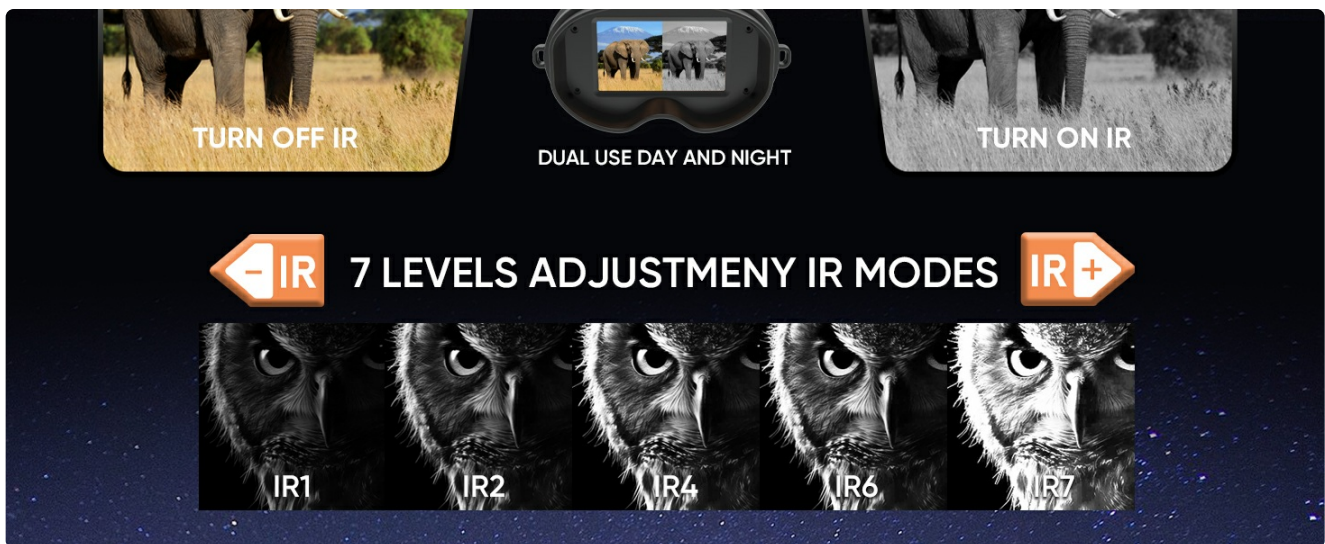


Image: Illustrates the three operational modes: video recording, photo capture, and video playback.

## Viewing Photos & Videos (Playback Mode)

To review your captured media:

1. Short press the **Power Button** to enter playback mode.
2. Use the **+IR** and **-IR Buttons** to navigate through your photos and videos.
3. To exit playback mode, short press the **Power Button** again.

## Transferring Data to Computer

You can easily transfer your captured photos and videos to a computer:

1. Connect the binoculars to your computer using the provided Type-C data cable.
2. The device will appear as a removable storage device on your computer.
3. Locate the media files (photos and videos) on the device's storage and copy them to your computer.

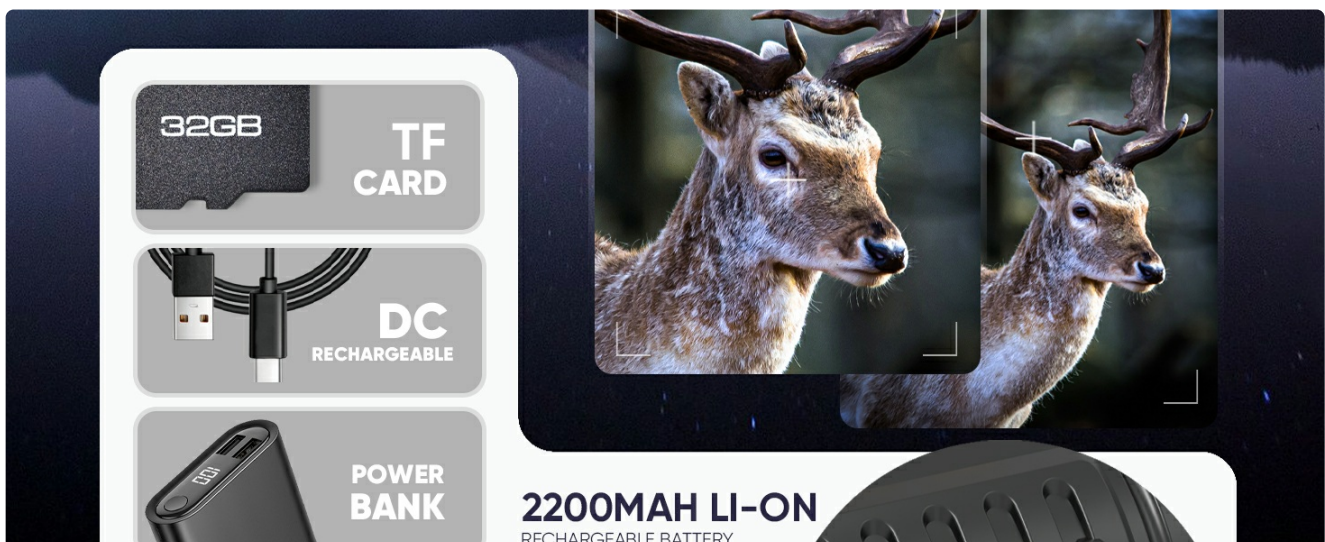


Image: Binoculars connected to a laptop via Type-C cable for data transfer.

## Tripod Mounting

For stable, long-duration observation or recording, you can mount the binoculars on a standard tripod:

- Locate the 1/4"-20 threaded mount at the bottom of the device.
- Screw the binoculars onto a compatible tripod.

Featuring a tripod for Convenient  
for outdoor shooting



Image: Binoculars mounted on a tripod, demonstrating stable observation.

## Applications

These binoculars are suitable for a variety of outdoor activities:

- Hunting and Wildlife Observation
- Camping and Hiking
- Security Monitoring
- Farm Monitoring





Image: Various use cases for the night vision binoculars.

### Official Product Video

Video: Official product video demonstrating features and usage of the Yamokizy Night Vision Goggles.

### MAINTENANCE

- **Cleaning:** Use a soft, dry cloth to clean the exterior of the binoculars. For lenses, use a lens cleaning cloth and solution specifically designed for optics. Avoid abrasive materials.
- **Storage:** Store the device in a cool, dry place away from direct sunlight and extreme temperatures. Ensure the lens caps are on to protect the lenses from dust and scratches.
- **Battery Care:** Recharge the battery regularly, even if the device is not in frequent use, to maintain battery health. Avoid fully discharging the battery for extended periods.

### TROUBLESHOOTING

Problem	Possible Cause	Solution
Device does not power on.	Low battery or no charge.	Charge the device fully using the provided Type-C cable.
Image is blurry.	Incorrect focus or objects too close.	Rotate the Manual Focus Wheel to adjust clarity. Note that objects within 0.5m may appear slightly blurred.
Poor visibility in darkness.	IR function off or low IR level.	Turn on the IR function and increase the IR level using the +IR button.
Cannot save photos/videos.	TF card full or not inserted correctly.	Check if the TF card is properly inserted. Delete old files or replace the card if full.
Cannot transfer files to computer.	Incorrect cable or connection.	Ensure the Type-C cable is securely connected to both the device and the computer. Try a different USB port.

### SPECIFICATIONS

- **Model:** 4K Night Vision Binoculars
- **Objective Lens Diameter:** 21.5 Millimeters



- **Magnification Maximum:** 10.0X Digital Zoom
- **Display:** 3-inch HD Display with 5-level adjustable brightness
- **Infrared Levels:** 7 levels (IR1-IR7)
- **Observation Range (Darkness):** 0.5m to 800m
- **Observation Range (Day/Low-Light):** 0.5m to infinity
- **Storage:** 32GB TF Card (included)
- **Battery:** 2200mAh Rechargeable Lithium Ion (included)
- **Continuous Use:** Up to 5 hours (with IR)
- **Charging Port:** Type-C
- **Tripod Mount:** Standard 1/4"-20 thread
- **Item Weight:** 15.8 ounces
- **Package Dimensions:** 7.48 x 6.1 x 3.94 inches

## WARRANTY AND SUPPORT

---

For warranty information, technical support, or any inquiries regarding your Yamokizy 4K Night Vision Binoculars, please refer to the warranty card included in your package or contact the seller directly through your purchase platform. Keep your proof of purchase for any warranty claims.