

COOAU G03

COOAU 2K Smart Bird Feeder with Camera (Model G03) Instruction Manual

Your guide to setting up and enjoying your smart bird feeder.

1. INTRODUCTION

The COOAU 2K Smart Bird Feeder with Camera, Model G03, offers an innovative way to observe and interact with local wildlife. Featuring a 2K resolution camera, AI bird recognition for over 11,000 species, and solar-powered charging, this device provides live video streaming, instant notifications, and recording capabilities. Its user-friendly design includes squirrel-proof features and various feeding options to attract a diverse range of birds.

Your browser does not support the video tag.

Video: An overview of the COOAU Smart Bird Feeder, highlighting its features and the joy it brings to users.

2. INCLUDED COMPONENTS

Please ensure all items are present before proceeding with setup:

- Bird Feeder
- Feeder Cover
- Perch Kit
- Wall & Pole Mount Bracket
- Solar Panel Mounting Kit
- Strap
- Drill Positioning Sticker
- User Manual
- Charging Cable
- Solar Panel
- Jelly Box
- Suet Feeder

- HoneyFeeder
- Fruit Holder
- Thumb Screws
- Wall Bracket Screw Set
- Bracket Screws
- Bracket Screw Drive
- Cigarette Cap Bracket



Image: All components included in the COOAU Smart Bird Feeder package.

3. SETUP GUIDE

3.1 Initial Charging

Before first use, fully charge the camera for approximately 10 hours using the provided charging cable. The indicator light will turn green when fully charged.

3.2 App Installation & Connection

1. Download the "VicoHome" app from your device's app store (available on App Store and Google Play).
2. Register for a new account or sign in.
3. Follow the in-app instructions to add your new COOAU Smart Bird Feeder. Ensure your Wi-Fi network is 2.4 GHz, as 5 GHz is not supported.

Your browser does not support the video tag.

Video: Step-by-step guide on connecting the bird feeder to the VicoHome app.

3.3 Assembly

1. Attach the feeder cover by buckling the left end into the container's tab, then angling the right side upward until it clicks.
2. Embed the bird perch into the groove on the bird feed trough. Secure it using the provided thumb screw from the bottom.
3. Install desired accessories such as the jelly box, suet feeder, honey feeder, or fruit holder onto the perch.

Your browser does not support the video tag.

Video: Detailed instructions on how to assemble the bird feeder components.

3.4 Mounting Options

The COOAU Smart Bird Feeder offers versatile mounting options:

- **Wall Mount:** Use the drill template sticker and provided screws to securely attach the wall mount bracket to a suitable surface.
- **Tree Mount:** Utilize the strap to firmly attach the feeder to a tree trunk.
- **Pole Mount:** The feeder is compatible with standard bird house poles (1"/2.5cm diameter). Secure the pole mount bracket to the feeder and then to your pole.



Image: Visual guide for wall, pole, and tree mounting configurations.

Your browser does not support the video tag.

Video: Instructions on how to install the bird feeder using various mounting methods.

3.5 Solar Panel Installation

The solar panel can be directly attached to the feeder's roof using the chimney cap bracket, or mounted separately in a location with optimal sunlight using the solar panel mounting kit. Ensure the panel faces the sun for maximum charging efficiency.

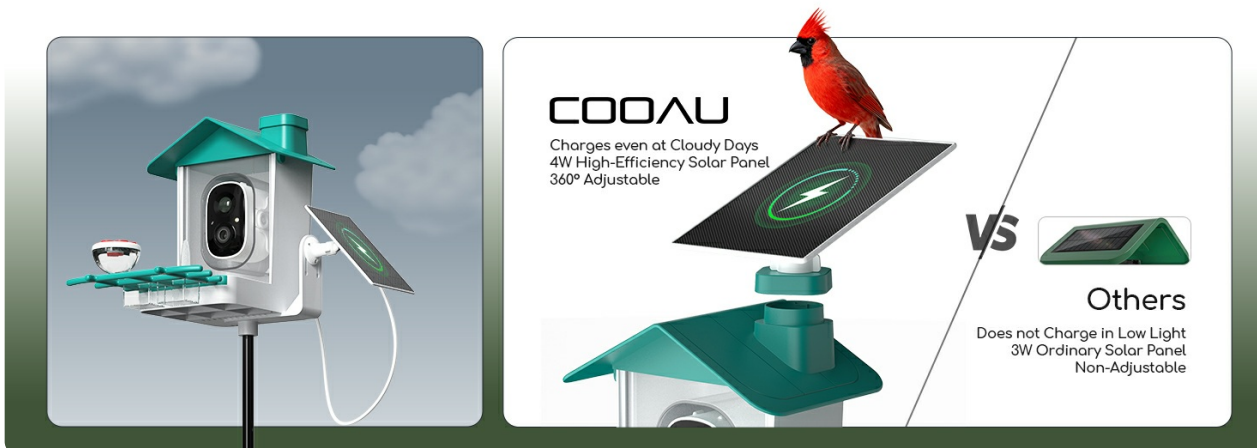


Image: The adjustable solar panel design for optimal charging.

4. OPERATING INSTRUCTIONS

4.1 Live Viewing & Recording

Access crystal-clear 2K live video streams and recordings directly through the VicoHome app. The camera captures detailed expressions and movements of birds, even in low light conditions. You can insert a Micro SD card (up to 128GB, not included) for local storage or utilize the optional cloud storage service.

3MP UHD & 160° Wide Angel

Bidding Farewell to Blurred and Narrow Perspectives

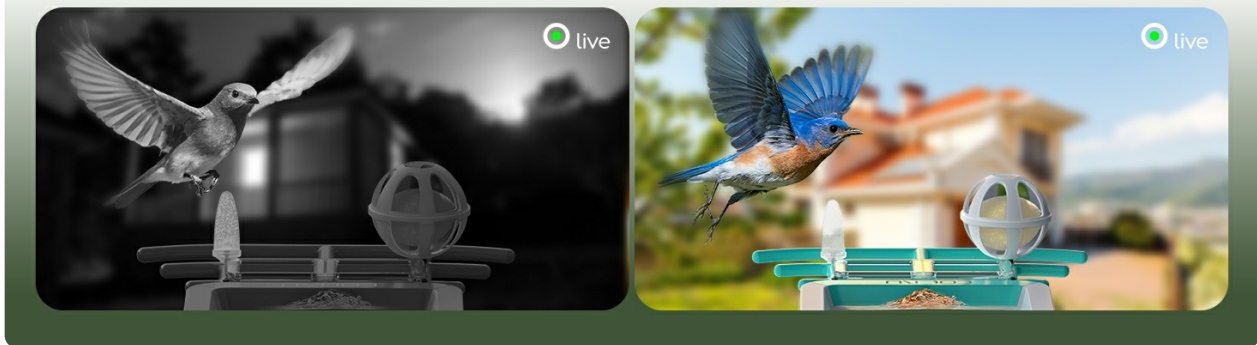


Image: Illustrates the 3MP UHD and 160-degree wide-angle view, including night vision capabilities.

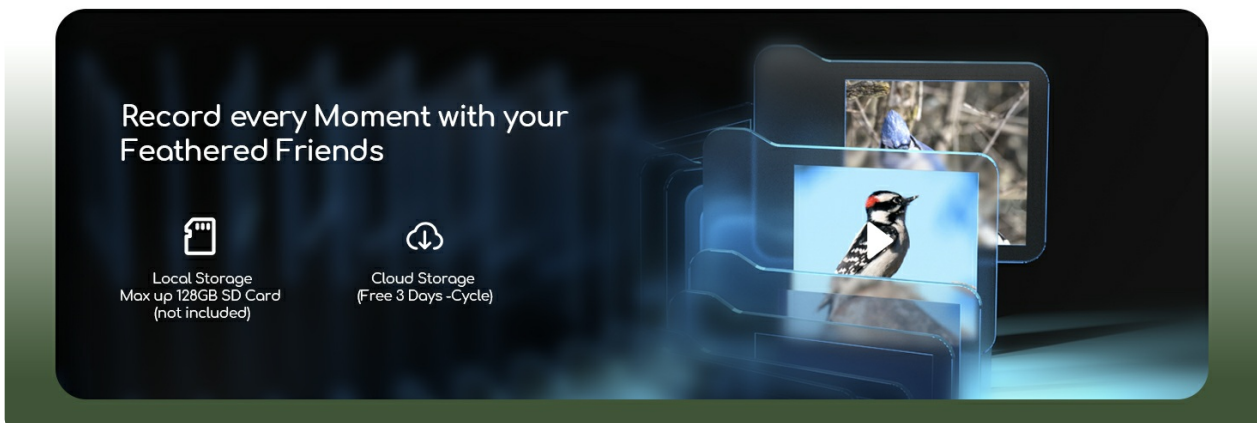


Image: Local storage via SD card and cloud storage options for recorded moments.

4.2 AI Bird Recognition & Notifications

The feeder's AI can identify over 11,000 bird species. When a bird is detected, you will receive instant phone notifications. The app includes a built-in bird encyclopedia to help you learn more about your feathered visitors.

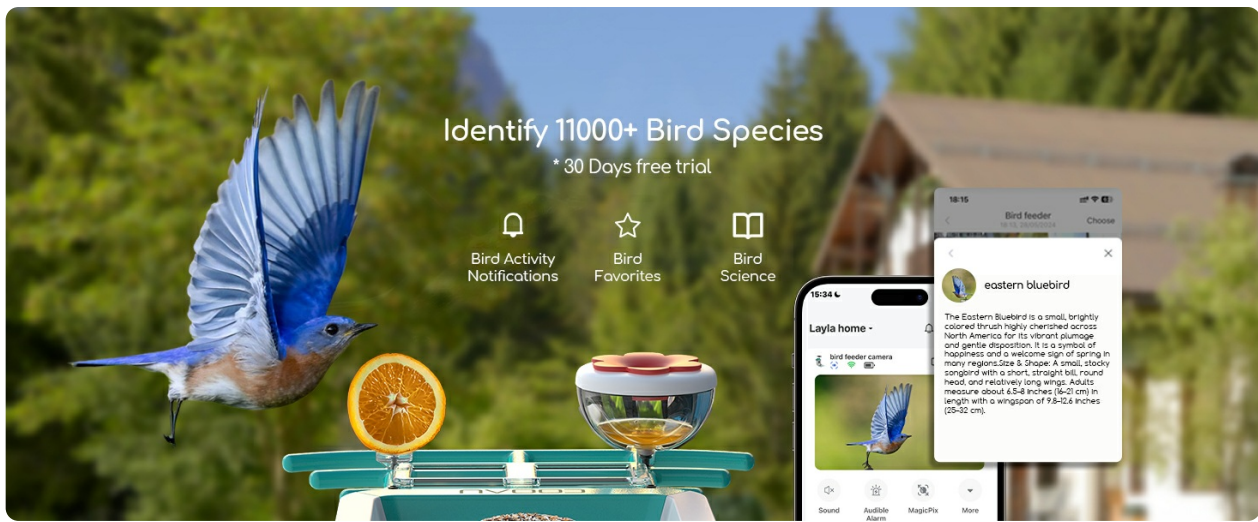


Image: The app's AI bird identification feature and notification system.

4.3 Squirrel Deterrence

The feeder includes features to deter squirrels, such as light and sound alarms, and two-way talk functionality, which can be activated via the app.

Scare Off that Greedy Squirrel



Light Alarm



Sound Alarm



Two-way
Talk



Image: The bird feeder's light and sound alarm features to deter squirrels.

4.4 Sharing Access

Share access to your bird feeder's live feed and recordings with family and friends through the VicoHome app, allowing multiple users to enjoy the bird-watching experience.

Your browser does not support the video tag.

Video: Instructions on how to share access to the bird feeder with others.

5. MAINTENANCE

5.1 Refilling Bird Feed

To refill the bird feed, pull outward to widen the gap between the feeder cover and the container. Lift the feeder cover upward to open the container, then pour in the bird feed. Alternatively, twist and open the "chimney cap" on the roof to add bird feed directly.

5.2 Cleaning

The feeder is designed for easy setup and cleaning. Regularly clean the feed trough and accessories to maintain hygiene for the birds. The anti-spill design helps keep the seed dry and healthier for birds.

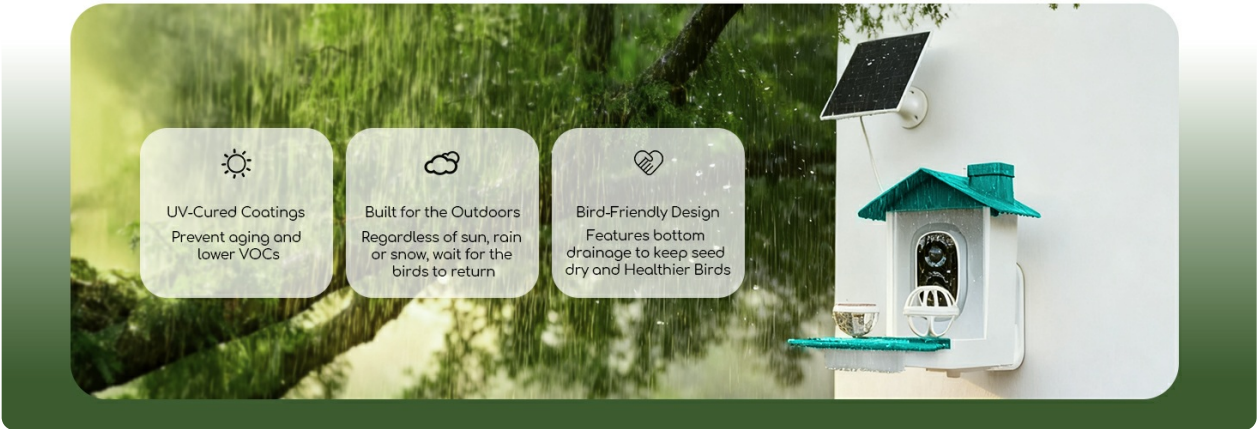


Image: The feeder's weatherproof and bird-friendly design, including bottom drainage.

6. TROUBLESHOOTING

- **No Power:** Ensure the camera is fully charged. Verify the solar panel is positioned to receive adequate sunlight.
- **Connection Issues:** Confirm your Wi-Fi network is 2.4 GHz. Check Wi-Fi signal strength at the feeder's location. Restart the camera and attempt reconnection via the app.
- **Poor Video Quality:** Ensure the camera lens is clean. Check your internet connection speed.
- **AI Recognition Inaccuracy:** Ensure the camera has a clear view of the birds. Pixel quality can affect AI accuracy.

7. SPECIFICATIONS

Brand	COOAU
Model Number	G03
Product Dimensions	10.7"L x 7.6"W x 7.6"H
Item Weight	4.11 pounds
Power Source	Solar Powered
Material	Acrylonitrile Butadiene Styrene (ABS), Polycarbonate (PC)

Capacity	1.5 Liters
Special Features	11k+ AI Recognition, 4W Adjustable Solar Panel, HD video, UV Resistant, Weatherproof
Batteries	1 C battery required (included)

8. WARRANTY & SUPPORT





COOAU provides a 2-year warranty with a "Replacement Only, No Repairs" policy. To activate your warranty, please refer to the warranty card included in the package.

For technical support or product replacement, please contact us:

Email: support-us@cooau.com

Our support team offers 24-hour fast email response.

Related Documents - G03

 <p>DC 201 PTZ 1080P</p>	<p>COOAU DC 201 PTZ Security Camera User Manual</p> <p>This manual provides comprehensive instructions for the COOAU DC 201 PTZ Security Camera, covering setup, features, troubleshooting, and after-sales service. Learn how to install, connect, and operate your camera for optimal security.</p>
 <p>Battery Powered Camera Service email:support-us@cooau.com</p>	<p>COOAU Battery Powered Camera ZS-GX5S User Manual</p> <p>User manual for the COOAU Battery Powered Camera ZS-GX5S, covering installation, app setup, features, troubleshooting, and FAQs.</p>
 <p>ZS-GQ1 Battery Powered Camera</p>	<p>COOAU ZS-GQ1 Battery Security Camera User Manual</p> <p>User manual for the COOAU ZS-GQ1 Battery Security Camera, covering product introduction, APP installation, camera setup, Wi-Fi connection, and troubleshooting.</p>
 <p>support@cooau.com</p>	<p>COOAU D30 Dual Dash Cam: Official User Manual & Setup Guide</p> <p>Download the official user manual for the COOAU D30 Dual Dash Cam. Get detailed instructions on setup, operation, features, specifications, and troubleshooting for your car camera.</p>



[COOAU Action Camera CU-SPC01 User Manual](#)

Comprehensive user manual for the COOAU Action Camera CU-SPC01, detailing setup, features, and operation. Includes instructions on getting started, camera modes, customization, connecting to the DV KING 4K app, offloading content, playback, deletion, formatting, maintenance, battery life, storage, handling, and mounting.



[COOAU D30 Dual Dash Cam User Manual](#)

User manual for the COOAU D30 Dual Dash Cam, detailing installation, operation, features, specifications, and support for optimal use.