

MACHINIST B450

MACHINIST B450 Motherboard User Manual

Comprehensive Guide for Installation, Operation, and Troubleshooting

1. INTRODUCTION AND OVERVIEW

This manual provides detailed instructions for the installation, operation, and maintenance of your MACHINIST B450 Motherboard. The MACHINIST B450 Motherboard is designed to support AMD AM4 socket Ryzen 1st through 5th generation processors, offering a robust platform for personal computing. Key features include dual-channel DDR4 memory support, NVME/NGFF M.2 storage, SATA 3.0, PCIe 3.0 expansion slots, USB 3.0 connectivity, Gigabit LAN, and integrated VGA and HDMI-Compatible video outputs (requires a CPU with integrated graphics).

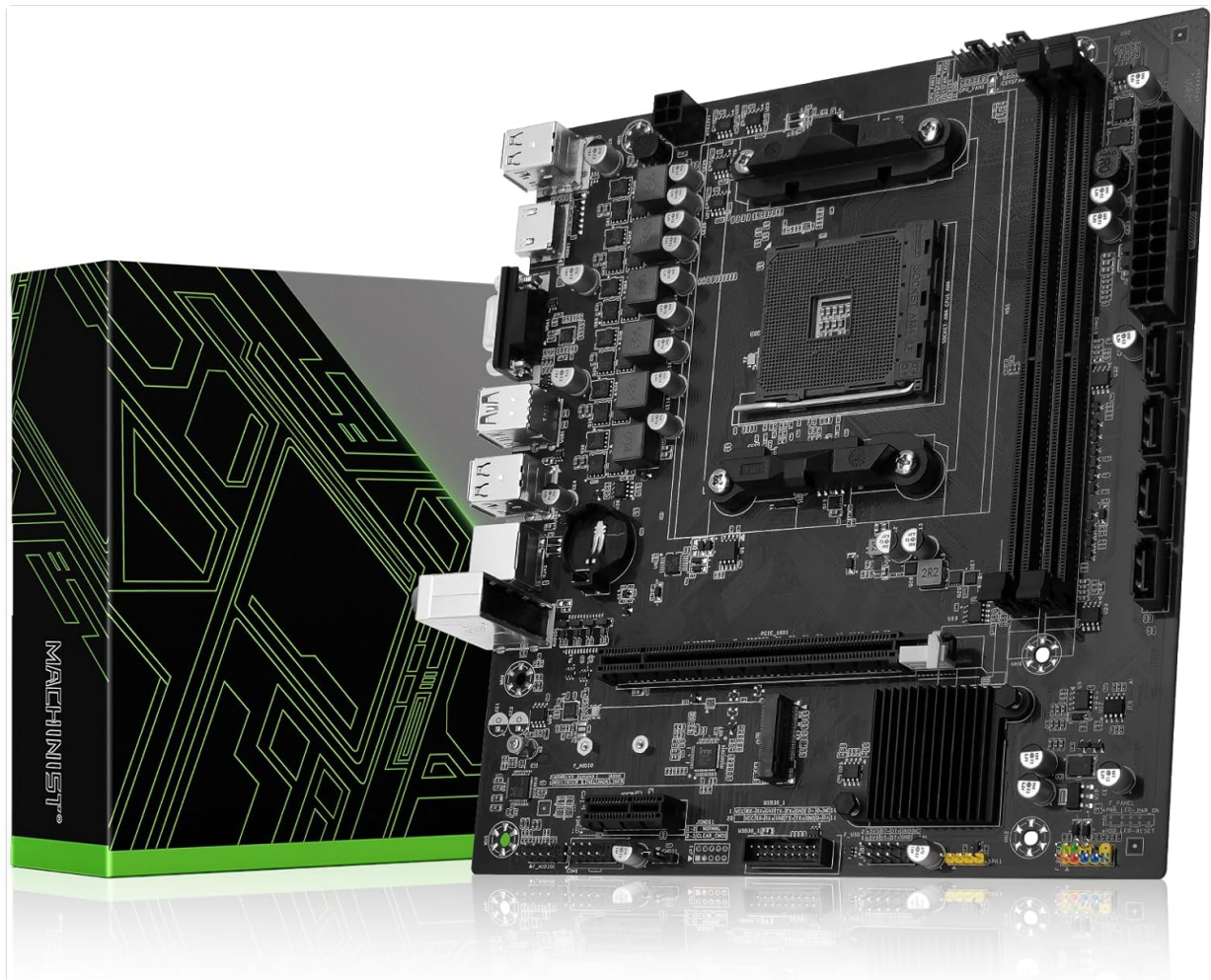


Image 1.1: The MACHINIST B450 Motherboard alongside its product packaging.

2. SETUP AND INSTALLATION

2.1. CPU Installation (AMD AM4 Socket)

The motherboard features an AMD AM4 socket, compatible with AMD Ryzen 1st, 2nd, 3rd, 4th, and 5th generation processors. Examples include Ryzen 9 5900XT, Ryzen 7 5800X, Ryzen 3 5305G, Ryzen 5 3600X, Ryzen 7 2700X, and Ryzen 7 1800X.

1. Carefully lift the CPU socket lever.
2. Align the triangular mark on your AMD Ryzen CPU with the corresponding mark on the AM4 socket.
3. Gently place the CPU into the socket without forcing it.
4. Lower the CPU socket lever to secure the processor in place.

AMD AM4 Socket

Support AMD Ryzen 1-5 gen processors, Ryzen 1000-5000 series, (Eg. Ryzen 9 5900XT, Ryzen 7 5800X, Ryzen 3 5305G, Ryzen 5 3600X, Ryzen 7 2700X, Ryzen 7 1800X etc.)

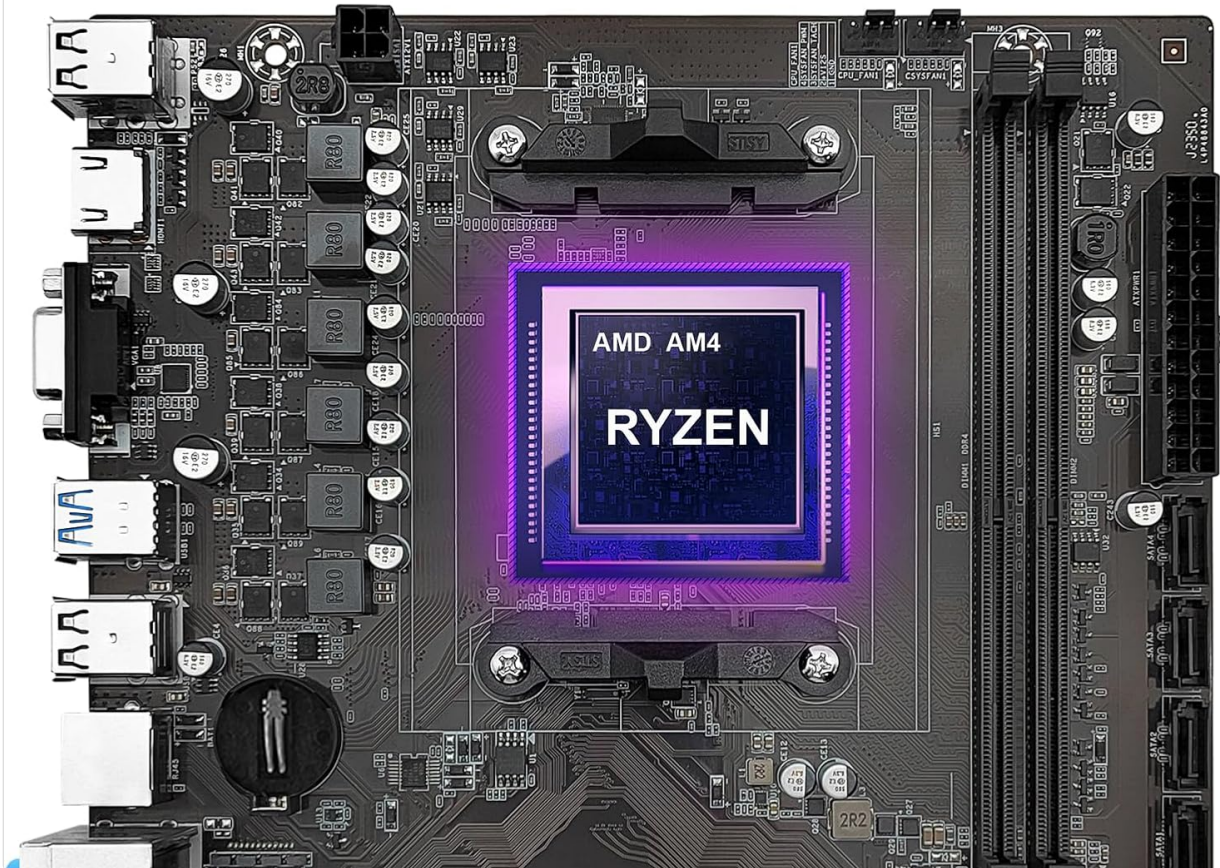


Image 2.1: Close-up view of the AMD AM4 CPU socket on the motherboard, highlighting its design for Ryzen processors.

2.2. Memory Installation (DDR4)

The motherboard supports dual-channel DDR4 non-ECC desktop memory. It features two DDR4 memory slots, supporting a maximum capacity of 64GB (32GB per slot). Supported effective frequencies include 2133MHz, 2400MHz, 2666MHz, 2800MHz, 3000MHz, 3200MHz, and 3600MHz.

1. Open the clips at both ends of the DDR4 memory slots.
2. Align the notch on the DDR4 memory module with the key in the memory slot.
3. Insert the memory module firmly into the slot until the clips snap into place.
4. Ensure both clips are fully closed and the module is seated correctly.

Dual-channel DDR4 Motherboard

Features 2 DDR4 memory slots. Support dual-channel DDR4 memory up to 64GB(32GB*2), 2133MHz/2400MHz/2666MHz/2800MHz/3000MHz/3200MHz/3600MHz

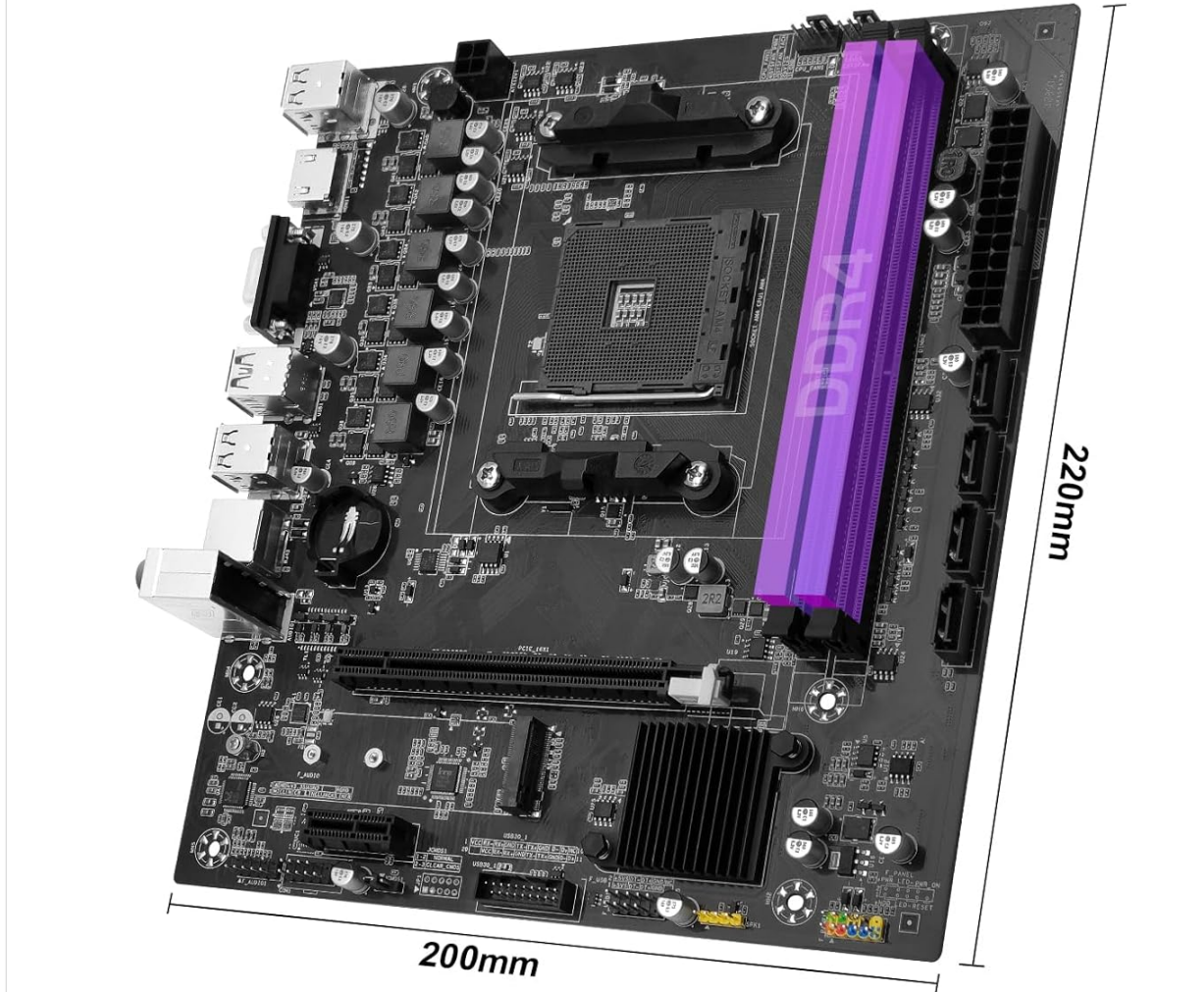


Image 2.2: The dual-channel DDR4 memory slots on the MACHINIST B450 Motherboard, indicating their position and design.

2.3. Storage Device Installation

2.3.1. NVME/NGFF M.2 Slot

The motherboard includes one M.2 slot that supports both NVME and NGFF hard disks. This slot utilizes PCIe 3.0 x4 bandwidth, allowing for transfer speeds up to 3600MB/s.

1. Locate the M.2 slot on the motherboard.
2. Remove the M.2 standoff screw.
3. Insert the M.2 SSD into the slot at an angle.
4. Gently push down the M.2 SSD and secure it with the standoff screw.

NVME M.2 Slot

Support NVME and NGFF hard disk and automatically switch. NVME M.2 transfer speeds up to 3600MB/s via x4 PCI Express 3.0 bandwidth

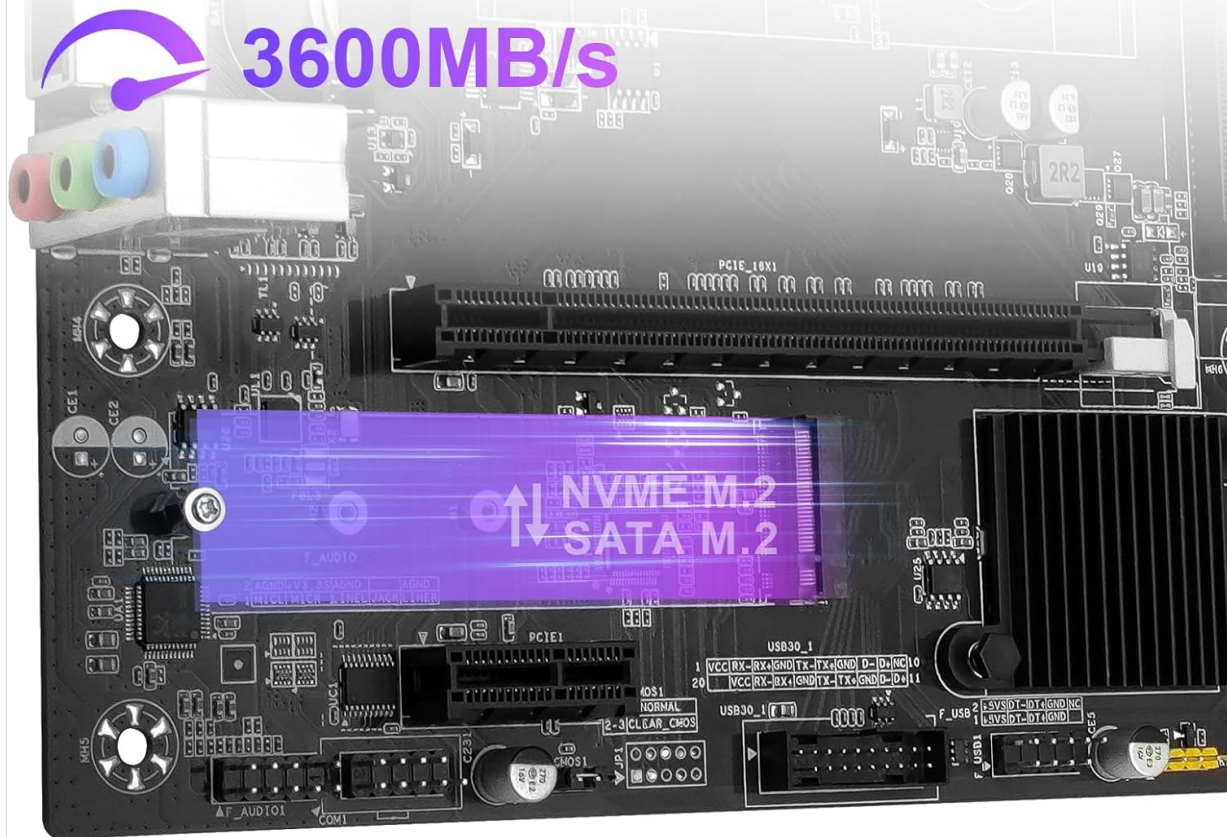


Image 2.3: The NVME M.2 slot on the motherboard, illustrating its location and compatibility with high-speed storage.

2.3.2. SATA 3.0 Ports

The motherboard is equipped with SATA 3.0 interfaces for connecting traditional hard drives and SSDs. These ports offer a maximum read and write speed of 6Gb/s.

1. Connect one end of a SATA data cable to a SATA 3.0 port on the motherboard.
2. Connect the other end of the SATA data cable to your SATA storage device (HDD/SSD).
3. Connect a SATA power cable from your power supply unit (PSU) to the SATA storage device.



Image 2.4: A visual representation of the SATA 3.0 interfaces on the motherboard, indicating their placement.

2.4. Expansion Card Installation (PCIe)

The motherboard provides one PCIe 3.0 x16 slot and one PCIe 2.0 x1 slot for expansion cards. The PCIe 3.0 x16 slot supports data transfer speeds up to 32GB/s.

1. Align your expansion card (e.g., graphics card) with the desired PCIe slot.
2. Press down firmly until the card is fully seated in the slot.
3. Secure the card to your PC case with a screw.

PCI Express Slot

Equipped with 1*PCIe 3.0X16 slot, 1*PCIe 2.0 X1 slot.
The rate of the PCIe 3.0 X16 slot can reach 32Gb/s



Image 2.5: The PCIe 3.0 x16 and PCIe 2.0 x1 slots on the motherboard, used for graphics cards and other expansion devices.

2.5. Power Connections

Connect the 24-pin ATX power connector and the 4-pin CPU power connector from your power supply unit (PSU) to the corresponding ports on the motherboard. Ensure all power connections are secure.

2.6. Front Panel and I/O Connections

Connect the front panel headers (power switch, reset switch, HDD LED, power LED) to their respective pins on the motherboard. Connect USB 2.0, USB 3.0, and audio headers from your case to the motherboard. The rear I/O panel includes HDMI-Compatible, VGA, USB 3.0, USB 2.0, RJ45 (Gigabit LAN), and audio ports.

Motherboard Parameters

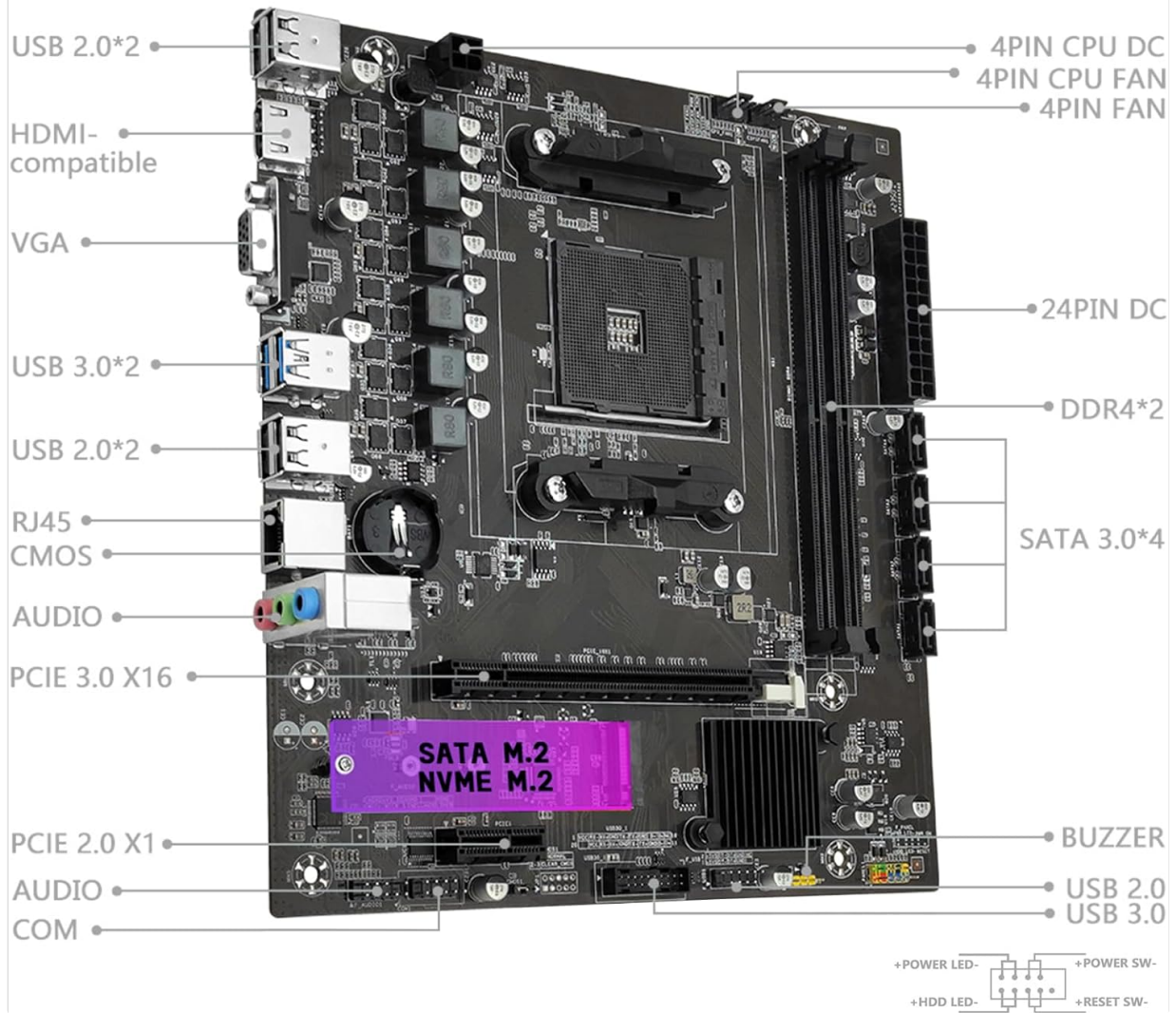


Image 2.6: A detailed diagram of the MACHINIST B450 Motherboard, labeling various ports and connectors for easy identification during setup.

VGA and HDMI-Compatible Interface

It can support 1080P high-definition video output without a graphics card. (Note:Your CPU must support integrated graphics to use these two interfaces.)

1080P



Image 2.7: The VGA and HDMI-Compatible output ports on the motherboard, which support 1080P high-definition video output. Note that a CPU with integrated graphics is required to utilize these outputs.

3. OPERATING INSTRUCTIONS

3.1. Initial Boot and BIOS/UEFI Configuration

After assembling your system, power it on. During startup, press the designated key (usually **DEL** or **F2**) to enter the BIOS/UEFI setup. Here you can configure boot order, system time, and other hardware settings.

3.2. Driver Installation

For optimal performance, it is essential to install the necessary drivers for your motherboard components. While a user manual is not included in the package, drivers can typically be downloaded from the manufacturer's official website. Alternatively, tools like Driver Talent or using a Windows 10 operating system (which often includes many generic drivers) can assist with driver installation.

4. MAINTENANCE

4.1. Clearing CMOS

Clearing the CMOS (Complementary Metal-Oxide-Semiconductor) can resolve various system issues, such as incorrect BIOS settings or boot problems. You do not need to remove the CMOS battery for this method,

but the motherboard must be disconnected from power.

1. Disconnect the power supply from the motherboard.
2. Locate the CMOS clear jumper (often labeled CLR_CMOS or similar) on the motherboard, typically near the bottom right corner.
3. Remove the jumper cap from its default position (usually pins 1 and 2).
4. Place the jumper cap onto pins 2 and 3 for approximately 5 seconds.
5. Return the jumper cap to its original position (pins 1 and 2).
6. Reconnect the power supply and power on the system.

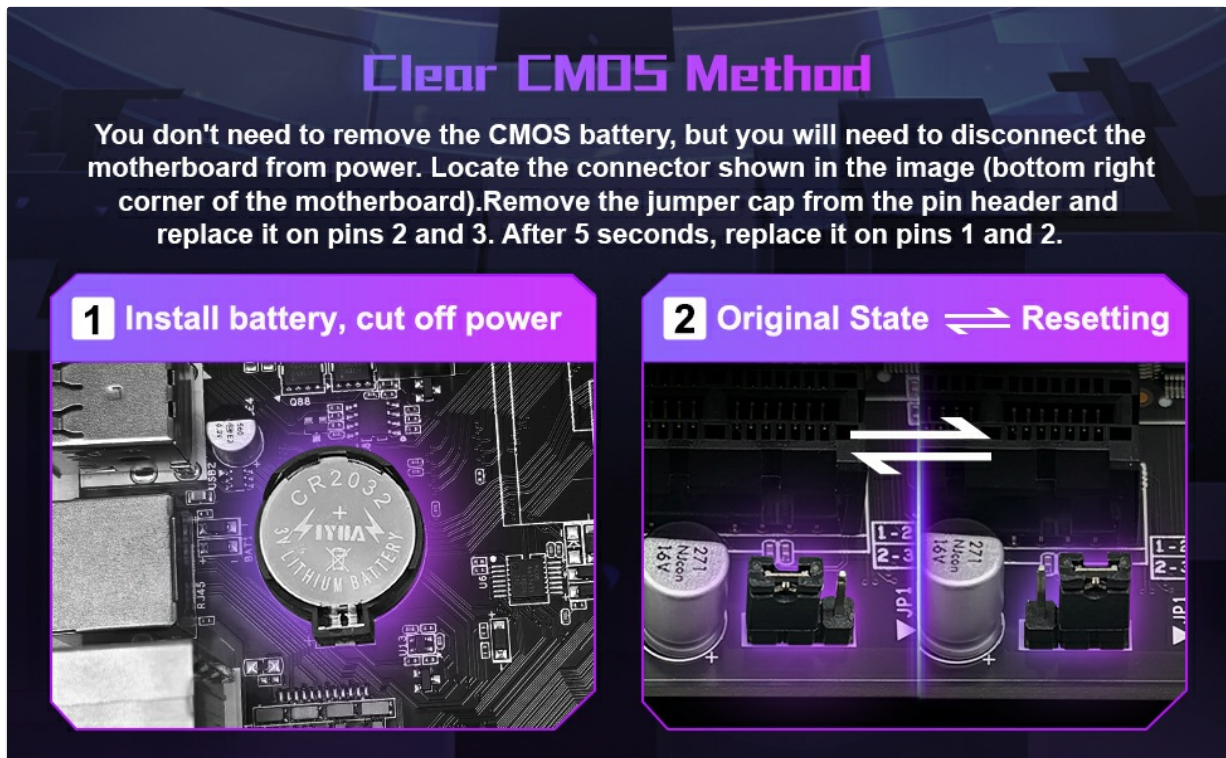


Image 4.1: Visual guide for the CMOS clear method, showing the jumper cap's positions for resetting.

5. TROUBLESHOOTING

5.1. System Does Not Power On / Fans Do Not Spin

If your system fails to power on and the fans remain inactive, consider the following steps:

- Verify that both the motherboard's 24-pin power connector and the CPU's 4-pin power connector are securely connected from the power supply.
- Confirm the compatibility and condition of your CPU and memory modules.
- Ensure that all memory modules are properly seated in their slots.
- If the issue persists after these checks, attempt to clear the CMOS as described in Section 4.1.

5.2. No Display Output (Fans Spin, Keyboard Lights Unresponsive)

If the system powers on and fans spin, but there is no display and keyboard lights (e.g., Caps Lock) do not respond, perform these checks:

- Re-verify the motherboard and CPU power connections.
- Ensure all memory modules are correctly seated.
- Confirm CPU and memory model compatibility and condition.

- If problems continue, clear the CMOS (Section 4.1).

5.3. No Display Output (Fans Spin, Keyboard Lights Responsive)

If the system powers on, fans spin, and keyboard lights respond (e.g., Caps Lock indicator lights up), but there is still no display, follow these troubleshooting steps:

- Verify that your monitor is powered on and the display data cable (HDMI or VGA) is securely connected to the correct output port.
- If no external graphics card (GPU) is installed, confirm that your CPU supports integrated graphics.
- If an external graphics card (GPU) is installed, ensure the display data cable is connected to the graphics card's output port, not the motherboard's integrated ports.
- Check the condition of the display cable, GPU, and monitor for any damage or malfunction.
- If the issue persists after these checks, clear the CMOS (Section 4.1).

6. SPECIFICATIONS




Feature	Specification
Brand	MACHINIST
Model Name	B450
CPU Socket	Socket AM4
Compatible Processors	AMD AM4 socket Ryzen 1-5th gen Processors
Chipset Type	AMD B450
RAM Memory Technology	DDR4
Memory Slots	2 (Dual-channel)
Maximum Memory Capacity	64 GB (32GB*2)
Supported Memory Frequencies	2133MHz/2400MHz/2666MHz/2800MHz/3000MHz/3200MHz/3600MHz
M.2 Slot	1 (NVME/NGFF, PCIe 3.0 x4, up to 3600MB/s)
SATA Ports	4 x SATA 3.0 (6Gb/s)
PCIe Expansion Slots	1 x PCIe 3.0 x16, 1 x PCIe 2.0 x1
Video Output	VGA, HDMI-Compatible (requires CPU with integrated graphics)
LAN	Gigabit Ethernet (Realtek8111H)
USB Ports	USB 3.0, USB 2.0
Platform	Windows
Item Weight	1.5 pounds
Package Dimensions	10.8 x 8.8 x 2.2 inches

7. WARRANTY AND SUPPORT

For warranty information, technical support, and driver downloads, please refer to the official MACHINIST website or contact their customer service. The package includes the B450 motherboard, one SATA cable, and one I/O baffle. A CMOS battery is not included.

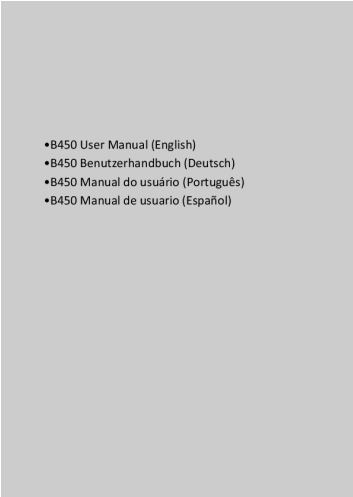
© 2025 MACHINIST. All rights reserved.

Related Documents - B450

<div>•B450 User Manual (English) •B450 Benutzerhandbuch (Deutsch) •B450 Manual do usuário (Português) •B450 Manual de usuario (Español)</div>	<div>MACHINIST B450 Motherboard User Manual: Installation & Setup Guide This user manual provides comprehensive guidance for the MACHINIST B450 motherboard. It covers detailed specifications, component identification, step-by-step installation instructions for CPU, memory, and expansion cards, explanations of internal and back panel I/O ports, BIOS setup procedures, and a troubleshooting FAQ section. Designed for AMD Ryzen processors with AM4 socket, it supports DDR4 memory and NVMe M.2 storage.</div>
<div> B450M AM4-K User Manual</div>	<div>MACHINIST B450M AM4-K Motherboard User Manual Comprehensive user manual for the MACHINIST B450M AM4-K motherboard, detailing specifications, installation, connectors, BIOS settings, and troubleshooting for AMD AM4 socket processors.</div>
<div>Motherboard</div>	<div>MACHINIST H110 Motherboard User Manual LGA 1151 CPU Support Comprehensive user manual for the MACHINIST H110 motherboard, detailing specifications, installation guides for CPU, memory, and expansion cards, back panel and internal connectors, BIOS settings, and troubleshooting FAQs for LGA 1151 processors.</div>
<div> B660-Windwalker-WIFI User's Manual</div>	<div>MACHINIST B660-Windwalker-WIFI Motherboard User Manual User manual for the MACHINIST B660-Windwalker-WIFI motherboard, detailing specifications, component overview, installation instructions for CPU, memory, and expansion cards, back panel and internal connectors, and BIOS setup.</div>

<div>Machinist</div> <div>X99 B9 User Manual (Full Link)</div>	<div>Machinist X99 B9 Motherboard User Manual</div> <div>Comprehensive user manual for the Machinist X99 B9 motherboard, detailing specifications, component overview, installation guides for CPU, RAM, expansion cards, connectors, BIOS setup, and troubleshooting FAQs.</div>
<div>MACHINIST</div> <div>X99-MR9D-PLUS User's Manual</div>	<div>MACHINIST X99-MR9D-PLUS User's Manual: Installation and Specifications</div> <div>Comprehensive user's manual for the MACHINIST X99-MR9D-PLUS motherboard. Covers specifications, component installation, internal and external connectors, and BIOS setup for Intel Xeon E5 V3/V4 and Core i7 processors.</div>

Documents - MACHINIST – B450



[MACHINIST B450 Motherboard User Manual: Installation & Setup Guide](#)

This user manual provides comprehensive guidance for the MACHINIST B450 motherboard. It covers detailed specifications, component identification, step-by-step installation instructions for CPU, memory, and expansion cards, explanations of internal and back panel I/O ports, BIOS setup procedures, and a troubleshooting FAQ section. Designed for AMD Ryzen processors with AM4 socket, it supports DDR4 memory and NVMe M.2 storage.

lang:it score:26 filesize: 2.74 M page_count: 69 document date: 2025-08-01



[MACHINIST B450M AM4-K Motherboard User Manual](#)

Comprehensive user manual for the MACHINIST B450M AM4-K motherboard, detailing specifications, installation, connectors, BIOS settings, and troubleshooting for AMD AM4 socket processors.

lang:it score:21 filesize: 971.91 K page_count: 22 document date: 2025-03-10