



[Manuals.plus](#) /

› [MAXDONE](#) /

› MAXDONE PH960G Cellular Trail Camera User Manual

MAXDONE PH960G

MAXDONE PH960G Cellular Trail Camera User Manual

Model: PH960G

1. INTRODUCTION

This manual provides detailed instructions for the setup, operation, and maintenance of your MAXDONE PH960G Cellular Trail Camera. Designed for outdoor surveillance, wildlife monitoring, and property security, this camera offers advanced features including 4G LTE connectivity, 2K HD live streaming, and solar power capabilities.



Image: The MAXDONE PH960G Cellular Trail Camera, showcasing its camouflage design, integrated solar panel, and included accessories like the SIM card and SD card.

2. WHAT'S IN THE BOX

- 1x 4G Trail Camera & Solar Panel & Antenna
- 1x Type-C Cable & Installation Belt & User Guide
- 1x Stand Mount & Stand Support & 3x Bolts & Stoppers
- 1x SIM Card & 32GB Micro SD card
- 1x Tweezers & SIM Eject Tool



Image: A visual representation of all items included in the MAXDONE PH960G package, arranged on a table in an outdoor environment.

3. PRODUCT FEATURES

- **2K Live Feed & Phone Remote Access:** Delivers sharp 2K video and crisp images. Check live feeds, review recordings, and use two-way audio via the TrailCam Go App. GPS tagging is included, and up to 2 users can access the feed simultaneously.
- **Pre-installed 4G SIM Card & No Wi-Fi Support:** Comes with a built-in 4G LTE SIM card (compatible with Verizon, T-Mobile, AT&T) for reliable U.S. coverage and a 32GB SD card. Data plans are available; home Wi-Fi is not supported.
- **Solar-Powered & Rechargeable:** Features a 4W solar panel and a built-in 6000mAh rechargeable battery, eliminating the need for disposable batteries.
- **0.1s Ultra-Fast Trigger & Motion Activated Alerts:** Captures moments with a rapid 0.1-second trigger speed. The smart PIR sensor ensures accurate detection, sending instant alerts to your phone.
- **No-Glow Night Vision & Optimal Coverage:** Equipped with 850nm infrared technology for zero visible emissions. Provides high-clarity night vision with a 100° field of view and a 65ft detection range.
- **Waterproof IP66:** Designed to withstand rain, dust, and harsh weather conditions.

4G LTE Cellular & APP Control

Support remote, watch live video anytime and anywhere.
Camera with Pre-installed SIM Card. First camera activation offers a \$0.01 Trial Plan.



Image: The trail camera installed on a tree, demonstrating its 4G LTE cellular and app control features with a live view on a smartphone.

4. SETUP

4.1 Physical Installation

The camera can be installed using the provided installation belt for temporary placement around a tree or post, or with the stand mount, stand support, bolts, and stoppers for a more permanent fixture.

100° Wide Angle PIR Detection

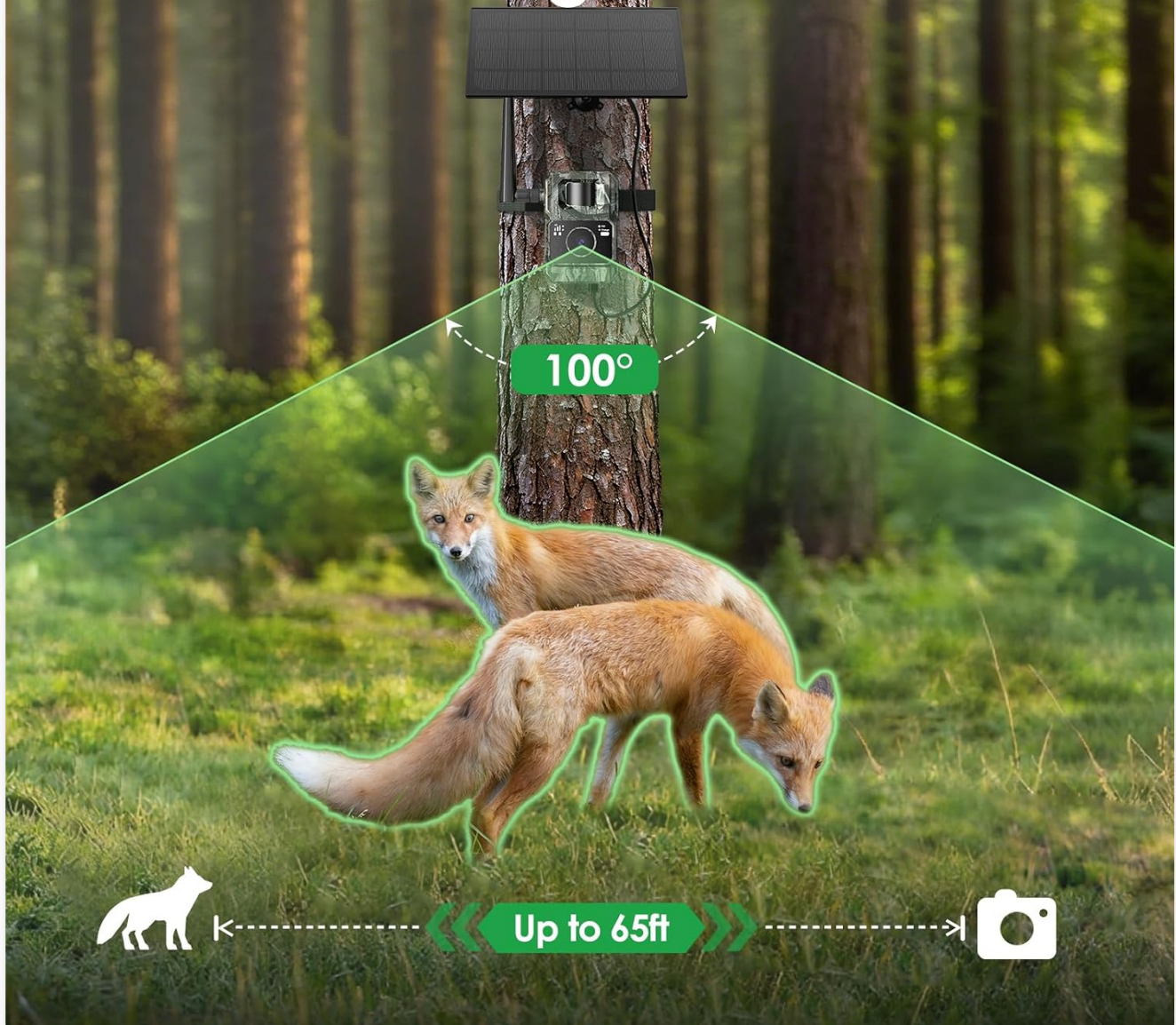


Image: The camera mounted on a tree, highlighting its wide-angle detection capabilities for capturing wildlife.

4.2 SIM Card & SD Card Installation

The camera comes with a pre-installed 4G SIM card and a 32GB Micro SD card. To access the card slots, open the waterproof cover located at the bottom of the camera. Ensure the SIM card is correctly inserted for cellular functionality and the SD card for local storage.

4.3 Powering the Device

The camera is powered by a built-in 6000mAh rechargeable battery, which is continuously charged by the integrated 4W solar panel. For initial setup or in low-light conditions, the camera can also be charged via the provided Type-C USB cable.



Image: Illustration of the camera's dual power options: solar charging and direct charging via a power adapter.

5. OPERATING INSTRUCTIONS

5.1 App Installation and Connection

Download the "TrailCam Go" app from your smartphone's app store. Follow the in-app instructions to connect your camera. This typically involves scanning a QR code on the device or packaging.

5.2 Live Feed & Remote Access

Once connected, you can view a live feed from your camera anytime, anywhere. The app allows you to stream in real-time, review recorded footage, and receive instant notifications. Two-way audio functionality enables communication through the camera.

Two Way Audio & Real-time Notification

When the camera detects movement, your phone will receive an alert message immediately.



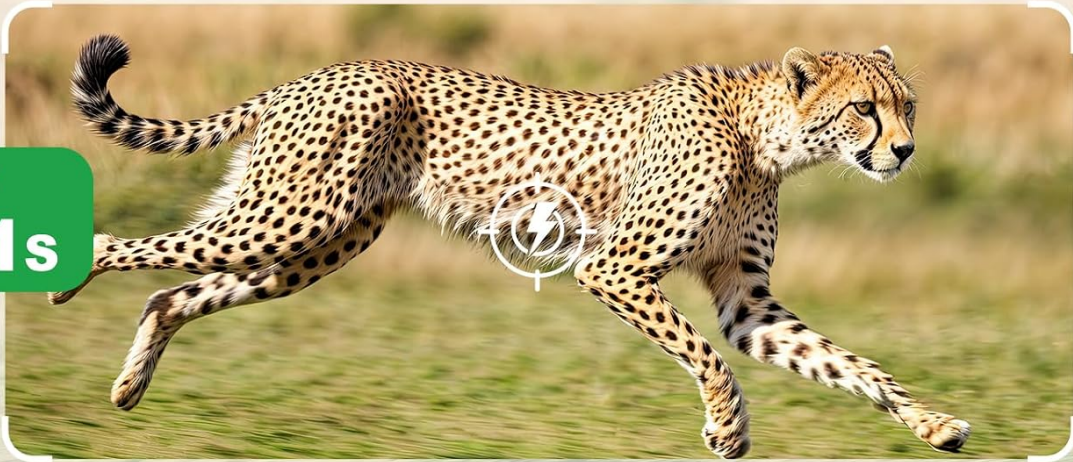
Image: A user interacting with the TrailCam Go app, receiving motion alerts and utilizing the two-way audio feature with the camera.

5.3 Motion Detection & Alerts

The camera's PIR sensor detects motion and triggers recording within 0.1 seconds. Instant alerts are sent to your phone via the TrailCam Go app, allowing you to quickly view captured photos and videos.

⚡ 0.1s Fast Trigger Speed

Our
0.1s



Other
0.5s



Image: Visual comparison highlighting the camera's fast 0.1-second trigger speed, ensuring no moment is missed.

5.4 Night Vision

The 850nm infrared technology provides clear night vision without visible light, ensuring wildlife remains undisturbed. The intelligent illumination system captures detailed imagery in low-light conditions.

5.5 Data Plans

The pre-installed SIM card requires a data plan for cellular functionality. First-time users may receive a trial plan. Various monthly and annual plans are available through the TrailCam Go App. Each camera requires its own subscription.

SIM Card Data Plan

Payment Type	Plan Type	Package Details			Plan Fee
		alarm Image (piece) or alarm video (item)	HD video (item)	Live viewing Time (minute)	
Monthly	Standard Version	300	/	30	\$4.99
	Advanced Edition	1000	10	60	\$6.99
	Unlimited Version	Unlimited	50	120	\$9.99
Annual	Standard Version	300	/	30	\$39.99
	Advanced Edition	1000	10	60	\$59.99
	Unlimited Version	Unlimited	50	120	\$89.99

- * 1. You can choose a suitable plan according to your own needs.
- 2. Camera with Pre-installed SIM Card. First camera activation offers a \$0.01 Trial Plan. Once the trial plan is used up, users need to recharge a data plan in the app to use it normally.
- 3. You can also use your own SIM card (plan fees will vary).

Image: Overview of available data plans for the cellular trail camera, including trial and subscription options.

5.6 Video Tutorial: Quick Start & Connection

Video: A quick start guide and connection tutorial for the MAXDONE 4G LTE Trail Camera, provided by ZQSM Store.

6. MAINTENANCE

- **Battery Care:** The solar panel keeps the internal 6000mAh battery charged. Ensure the solar panel is positioned to receive adequate sunlight for optimal performance.
- **Waterproofing:** The camera has an IP66 waterproof rating, protecting it from rain, dust, and harsh weather. Ensure all covers and ports are securely closed to maintain water resistance.
- **SD Card Management:** The camera supports up to 128GB Micro SD cards. Regularly check the storage capacity via the app or by physically removing the card. Transfer important footage to prevent data loss.

IP66 Waterproof



Image: The camera demonstrating its IP66 waterproof capabilities in various weather conditions.

7. TROUBLESHOOTING

- **No Signal/Connectivity Issues:** Ensure the SIM card is properly inserted and activated with a valid data plan. Check the cellular signal strength in the camera's location via the app. Reposition the camera if signal is weak.
- **Battery Not Charging:** Verify the solar panel is clean and positioned to receive direct sunlight. If using the Type-C cable, ensure it is securely connected to a working power source.
- **Motion Detection Not Triggering:** Adjust the PIR sensor sensitivity settings in the app. Ensure there are no obstructions in the camera's field of view.
- **Poor Image/Video Quality:** Check the camera lens for dirt or condensation. Ensure the resolution settings in the app are set to your desired quality (e.g., 2K for video, 48MP for images).

8. SPECIFICATIONS

Feature	Detail
Model Name	PH960G Cellular Trail Camera
Indoor/Outdoor Usage	Outdoor
Video Capture Resolution	2K
Image Resolution	48MP (inferred from feature bullets)
Power Source	Solar Powered & Built-in 6000mAh Rechargeable battery
Connectivity Protocol	Cellular
Wireless Communication Technology	Cellular
Controller Type	Android, iPhone (via TrailCam Go App)
Mounting Type	Tree Mount
Viewing Angle	100 Degrees
Night Vision Range	65 Feet
Waterproof Rating	IP66
Item Dimensions L x W x H	4.13 x 2.76 x 1.97 inches
Item Weight	1.43 pounds

9. WARRANTY AND SUPPORT

For warranty information and technical support, please refer to the contact details provided in your product packaging or visit the official MAXDONE website. Keep your purchase receipt for warranty claims.